

Table of Contents

Section A: Installation Guide

A0. Special Considerations for Windows Vista

- a) Consideration during installation
- b) Runtime considerations

A1. SELECT XM License

- a) Standalone workstations
- b) Networked workstations
 - a. Using a Bentley SELECT server
 - b. Using a local SELECT server
 - c. Local SELECT Server installation

A2. Bentley SELECT License Configuration Tool for STAAD.Pro

Section B: Legacy Copy Protection Systems

B1. Updating Legacy Copy Protection Systems

Section C: Troubleshooting

C1. SELECT License

Section A: Installation Guide

A0. Special Considerations for Windows Vista

(The section A0 is only applicable if you are using Windows Vista. If you are using other operating systems, ignore this section and refer to sections A1 and A2)

STAAD.Pro software and its components were originally developed using default facilities available in Windows 2000 and Windows XP operating systems. The program assumes certain user privileges (which are available in Windows 2000 and XP) while installing and running the program. The User Account Control (UAC) sub-system is completely redesigned in Windows Vista, making STAAD.Pro incompatible with revised security regime available in Windows Vista. Future version and builds of STAAD.Pro will be made completely compatible with Windows Vista UAC. Until then you need to take special considerations to install and run STAAD.Pro on Windows Vista Operating System.

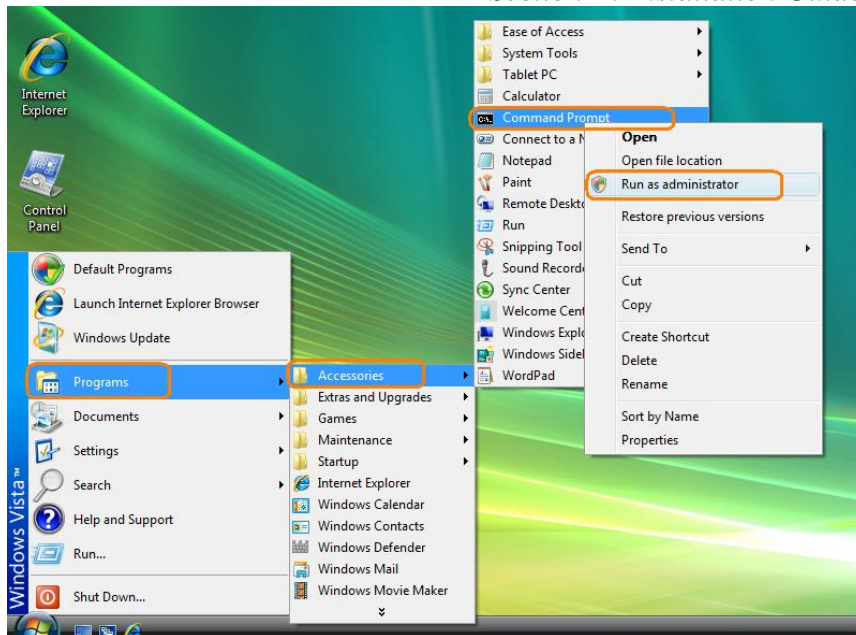
a) Considerations During Installation

Invoking a Command Prompt with Administrative Privilege

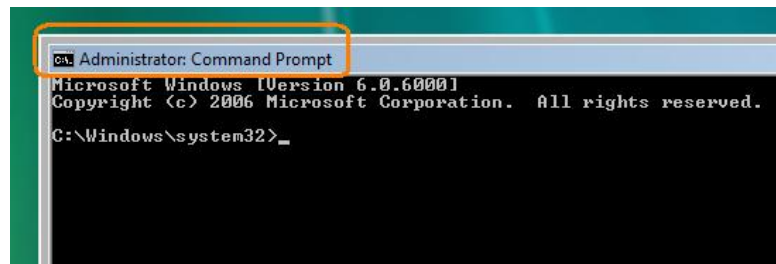
During installation process involving Bentley IEG License Service and STAAD.Pro V8i, user needs to have administrative privileges. If you are planning to use Setup.exe to install the components/programs, you may skip this section.

On Window Vista, logging in as a user with administrative privilege does not really allow installation programs to run with administrative privileges. By default Windows Explorer process or MS-DOS shell process run with standard user privilege, even if your user ID has administrative privilege. To overcome this, you need to invoke the installation process from a command shell running with full administrative privilege. You may launch command shell with administrative privilege by locating the "Command Prompt" icon under Start/Programs/Accessories menu and select the context menu "Run as administrator" as shown in the following figure.

Section A: Installation Guide



The Windows heading for the Command Prompt window will indicate that you are running the command shell with administrative privilege.



Once the command shell is invoked with administrative privilege, you may locate the folder where you have downloaded or copied the Bentley IEG License Service installer MSI and STAAD.Pro V8i installer MSI packages. You may invoke the installer by running the system program `msiexec.exe` with the msi file name as the command line parameters as shown next two sections of this document.

Installing Bentley IEG License System

In order to install Bentley IEG License System, please login as administrative user. The license system can be installed either by invoking Setup.exe or "STAAD.Pro V8i.msi". If you use Setup.exe, no other special consideration is necessary. However, if you chose to use the MSI file to initiate the installation process, please do so from a command shell with full administrative privilege as described in the previous section. Use the command **msiexec /i "Bentley IEG License Service.msi"** to initiate installation process from the command shell.

Installing STAAD.Pro V8i

In order to install STAAD.Pro V8i, please login as administrative user. STAAD.Pro can be installed either by invoking Setup.exe or "STAAD.Pro V8i.msi". If you use Setup.exe, no other special consideration is necessary. However, if you chose to use the MSI file to initiate the installation process, please do so from a command shell with full administrative privilege as described in the previous section. Use the command **msiexec /i "STAAD.Pro V8i.msi"** to initiate installation process from the command shell. For details on the installation, please refer to the sections in this installation guide titled **Install STAAD.Pro**

b) Runtime Considerations

The installation process creates a STAAD.Pro configuration file (*STAADPro20070.ini*) at the root folder where you have installed STAAD.Pro V8i (e.g. C:\SPro2007) and copies that configuration file in Windows folder so that all users can access that file during runtime. Subsequently user may change any configuration (e.g. Base unit system, Default design code etc.) and STAAD.Pro will attempt to save the revised configurations in this file. However, due to revised security regime under Windows Vista, STAAD.Pro program will not be able to update the INI file located in Windows folder, thus all changed configurations will be lost. To overcome this, you may copy this configuration file (*STAADPro20070.ini*) to a folder where the user has write permission and then define an environment variable SPROINIMAP and set the value of the variable to full pathname of the copied configuration file (e.g. SPROINIMAP=C:\Users\Document\STAADPro20070.ini). This process need to be repeated for all user profiles. This will ensure all individual users running STAAD.Pro on that machine can maintain their own copies of the configuration settings.

Also please note that STAAD.Pro installation folder contains standard example problems within the .\STAAD\Examp folder under the STAAD.Pro installation folder (e.g. C:\SPro2007\STAAD\Examp). If user wants to run these sample problems, Windows Vista may not allow STAAD.Pro to generate the output files under this folder as user may not have the write privilege in this folder. If that is the

Section A: Installation Guide

case, you may copy these sample input model to a user specific folder where user has full access and let program open the sample models from that specific folder.

A1. SELECT XM License

a) Standalone workstations

Overview

This is for installations which do not use the internet or network to authenticate the Bentley SELECT License which is required to run STAAD.Pro.

In order to complete the installation, your SELECT license file (*.XML) will be required. Without this file, STAAD.Pro will operate using a trial License for only 15 days.

Instructions

a) Install STAAD.Pro

Unless you already have a STAAD.Pro V8i installation image available on a CD, local or network drive, please download STAAD.Pro V8i installation image from Bentley SELECT download site (<http://selectservices.bentley.com/en-US>). Go to the section **Downloads and Updates** and click on **Downloads/MySELECT CD** Log in using your SELECT login and password and download STAAD.Pro V8i. If you do not have necessary information to login to this site, please contact your Bentley account manager.

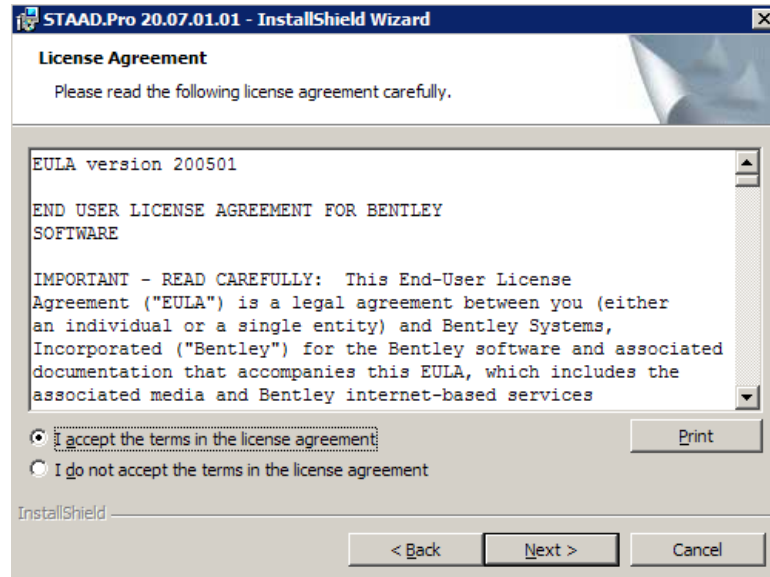
To install STAAD.Pro V8i, ensure you have logged in your machine with an account that has administrative privileges. If you are unable to log in with a suitable account, then contact your network administrator to login and perform the installation.

It is to be noted that, before installing STAAD.Pro V8i, you must install "Bentley IEG License Service". The installation package for "Bentley IEG License Service" is available at the Bentley SELECT download site as the pre-requisite for STAAD.Pro and can be downloaded from the same location as STAAD.Pro.

Locate STAAD.Pro V8i installation image on local or network drive and double click on the installation startup MSI package (**STAAD.Pro V8i.msi**) or double click on the installation startup program (**Setup.exe**) available within the **Install** subfolder of the installation image. STAAD.Pro V8i requires Microsoft .NET 2.0 framework to be installed in order to operate properly. If you do not have .NET 2.0 framework already installed, it is recommended that you initiate the installation process by starting the program Setup.exe, instead of launching the MSI package. Setup.exe will automatically detect .NET 2.0 availability status and invoke .NET 2.0 installer if necessary.

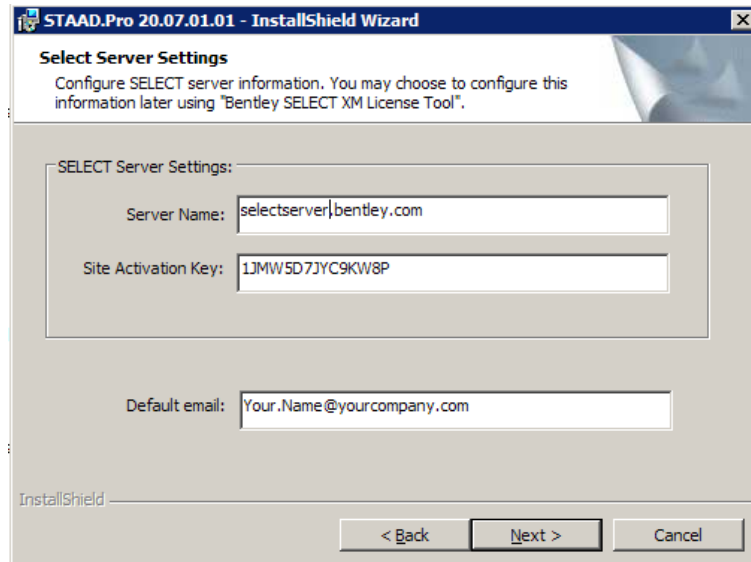
Section A: Installation Guide

While installing STAAD.Pro, please follow all of the installation interaction dialogs and enter necessary information. Following dialogs will appear in sequence.



Follow the instructions on the subsequent dialog boxes. The following steps are for assistance on the more significant dialogs. Those that are not illustrated here are self explanatory.

When asked for SELECT Server name and site activation key, please enter the information if you have those. For Standalone workstation set server name to **LocalHost** and activation key to **1**. For Bentley hosted or deployed (local) SELECT installations discussed later in this guide, you will need to use the proper server name and activation key. In case of Bentley hosted server both server name and activation key is provided by Bentley. For deployed (local) SELECT server installations activation key is provided by Bentley and server name is the name of your local SELECT server. You may also choose to configure these information later.



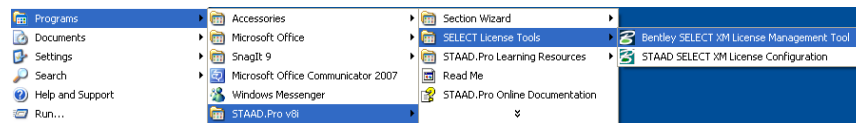
Continue setting your individual requirements in the remainder of the dialog boxes to complete the installation of the STAAD.Pro files.

A trial license is installed with software, which allows you to run STAAD.Pro for a period of up to 15 days. In case you did not enter the server name and activation key during installation, you must configure the server information using the Bentley SELECT XM License Tool within 15 days. The process is described under the heading **"b) Adding the Bentley SELECT Server activation code"** on the page 12 of this document

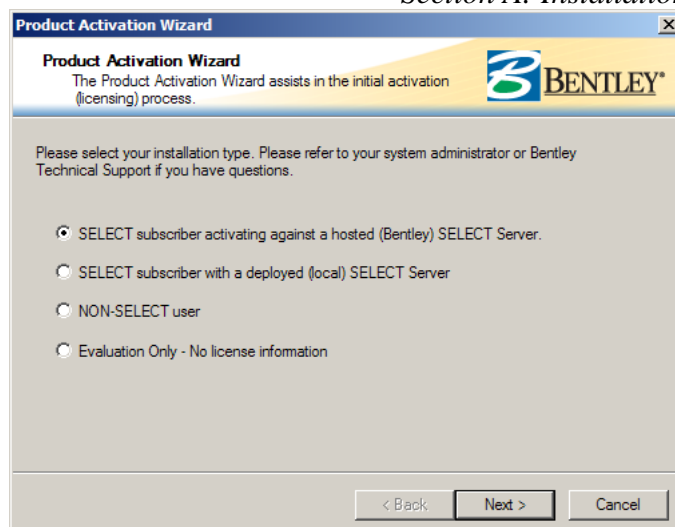
b) Adding a Standalone License file

You will need your Bentley SELECT license file (*.XML), which has been supplied. If you do not have it please contact Bentley technical support.

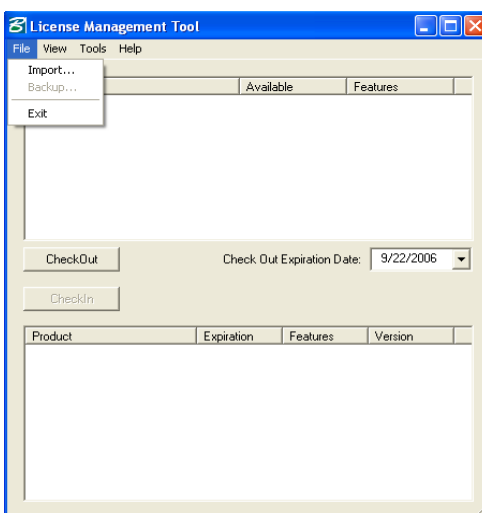
Once you get the *.XML license file, copy the file in your hard disk. Go to Start | Programs | STAAD.Pro V8i | SELECT License Tools | Bentley SELECT License Management Tool as shown next



If this is being set for the first time, then the following SELECT activation wizard dialog will be displayed

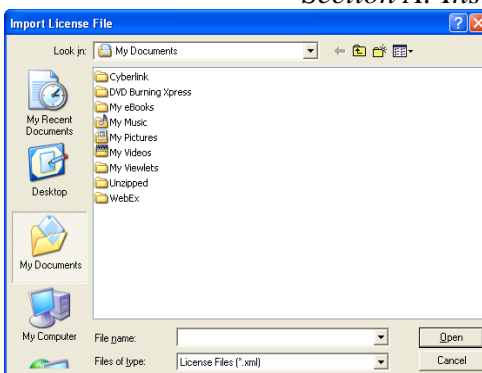


To configure Node Locked or Standalone SELECT license, you may exit from the activation wizard by clicking on the “Cancel” button. The following dialog box will be displayed

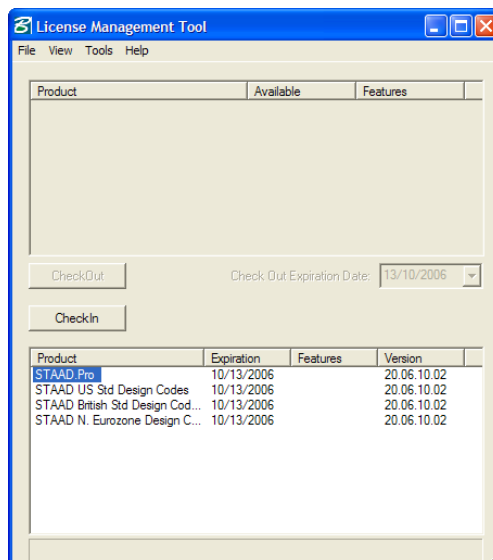


Click on the menu item ‘File | Import...’ to open the Import License File dialog box

Section A: Installation Guide



Browse to the location of the license (.xml) file, select it and click on the 'Open' button to import the license file. If the file is successfully imported, the available licenses will be displayed as shown next



The security is now in place. The installation is complete and STAAD.Pro is ready for use.

b) Networked workstations

a. Using a Bentley SELECT License Server

Overview

This is for installations which use a Bentley Server to authenticate the Bentley SELECT License used to run STAAD.Pro.

In order to complete the installation, the SELECT Server Name and Site Activation key will be required. If you do not have this, please contact Bentley technical support. Without this information, the installation will operate using a trial license for 15 days only.

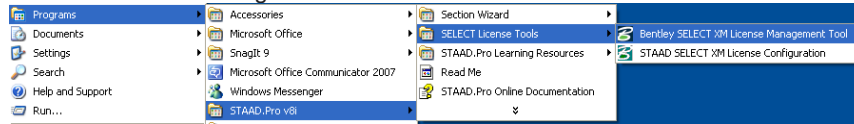
Instructions

a) Install STAAD.Pro

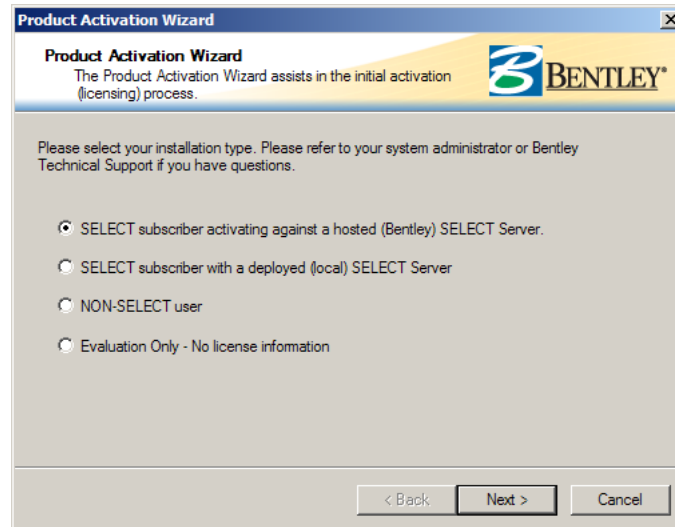
Follow the installation instructions under the preceding section **A1** titled “Install STAAD.Pro”

b) Adding the Bentley SELECT Server activation code

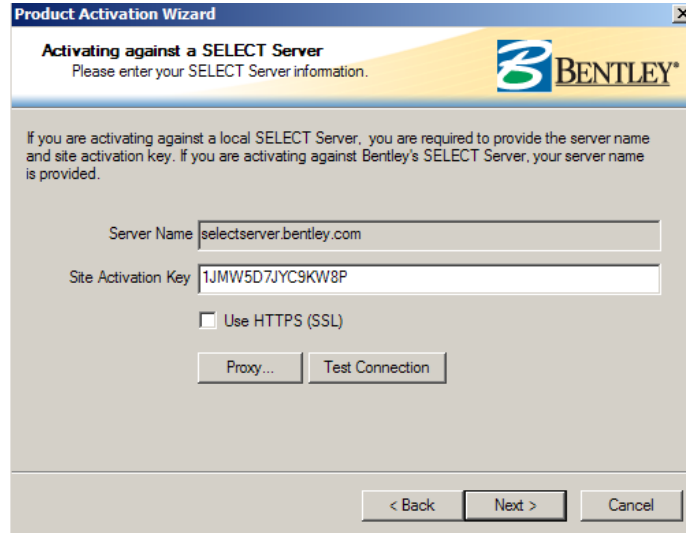
Go to Start | Programs | STAAD.Pro V8i | SELECT License Tools | Bentley SELECT License Management Tool as shown next



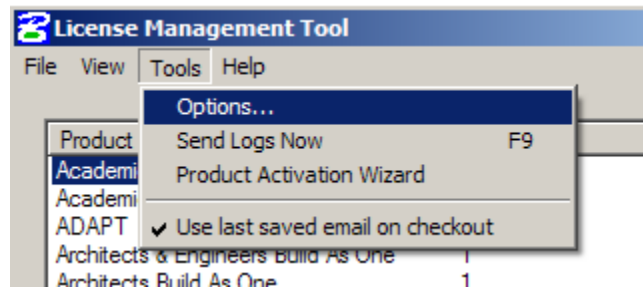
If this is being set for the first time, then the following dialog box will come up



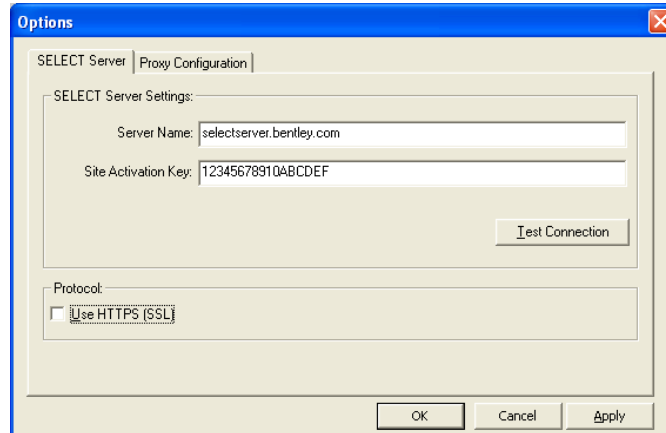
Select the option **hosted (Bentley) SELECT Server** and click on the “Next” button. The following dialog box will be displayed



In case the Product Activation Wizard is not launched, a License Management Tool dialog box will open. You may then invoke the SELECT Server configuration dialog by clicking on the Tools | Options menu as shown next

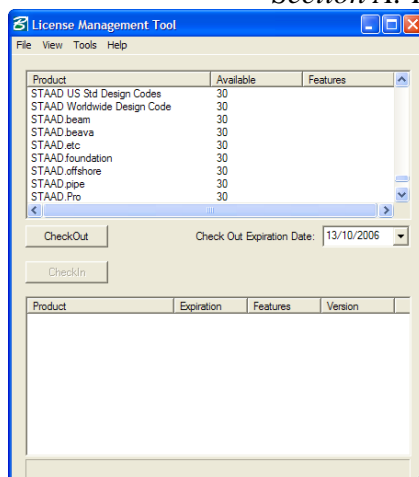


This will bring up the SELECT Server configuration dialog.



You may now enter the SELECT Server name and the Site Activation Key received from Bentley and click on "OK" button. Before accepting the entered information you may also chose to click on the "Test Connection" button to confirm that the entries are correct.

After the information is accepted by the system, program will then display all the available licenses for your usage as shown in the following dialog box.



The security system is now in place. Before you start using STAAD.Pro you will need to configure the license as per instructions provided in section **A2** titled **Bentley SELECT Configuration Tool for STAAD.Pro**

b. Using a local SELECT License Server

Overview

This is for installations which use a local server to authenticate the Bentley SELECT License, which is used to run STAAD.Pro.

In order to complete the installation, the SELECT Server Name and Site Activation key will be required. If you do not have these, please contact your network administrator. Without these information, the installation will operate using a trial license for 15 days only.

Details of setting up the SELECT Server are covered in the next section.

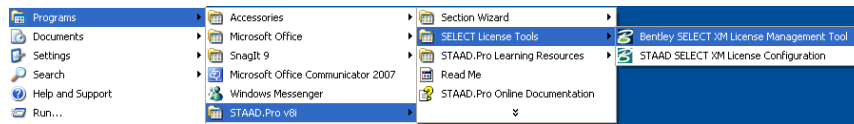
Instructions

a) Install STAAD.Pro

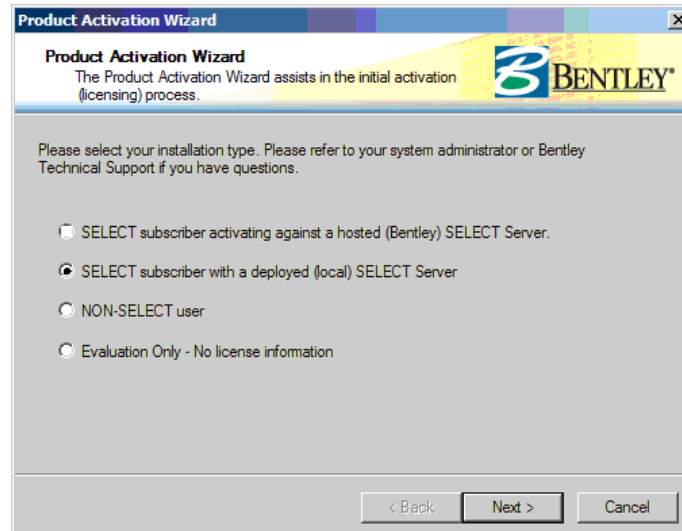
Follow the installation instructions under the preceding section **A1** titled “**Install STAAD.Pro**”

b) Adding the Bentley SELECT Server activation code

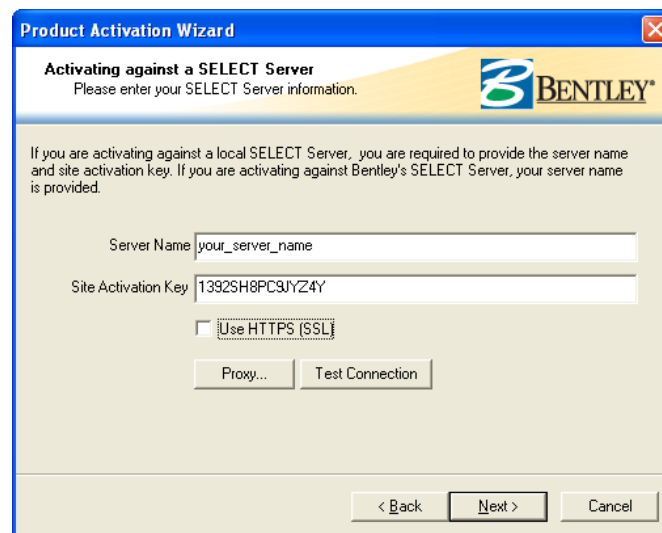
Go to Start | Programs | STAAD.Pro V8i | SELECT License Tools | Bentley SELECT License Management Tool as shown next



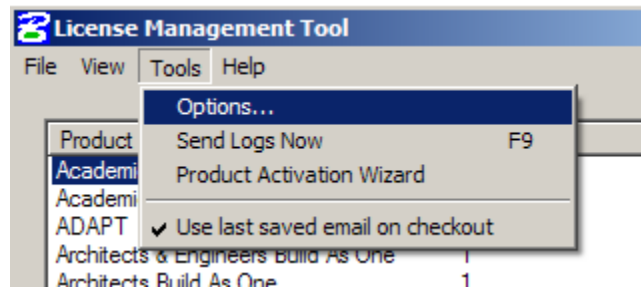
If this is being set for the first time, the following dialog box will be displayed



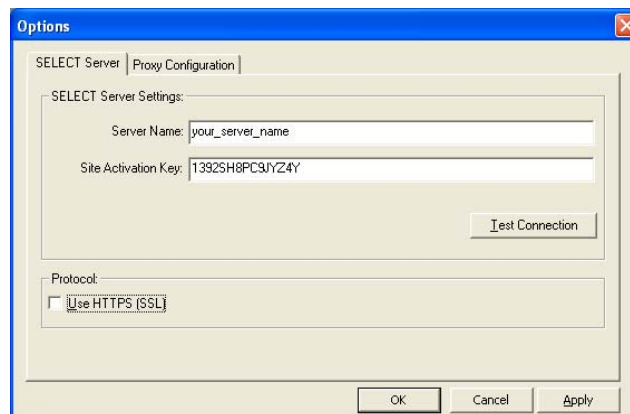
Select the deployed (local) SELECT Server option and click on the “Next” button. The following dialog box will be displayed



In case the Product Activation Wizard is not launched, a License Management Tool dialog box will open. You may then invoke the SELECT Server configuration dialog by clicking on the Tools | Options menu as shown next



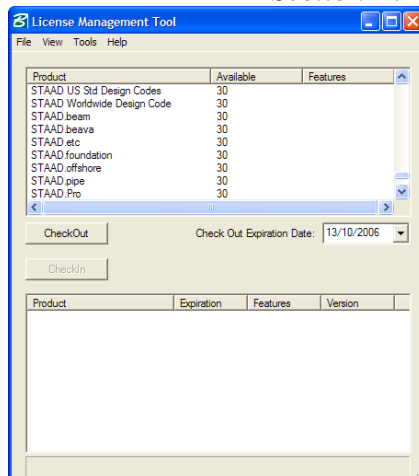
This will bring up the SELECT Server configuration dialog.



You may now enter the deployed SELECT Server name and the Site Activation Key received from Bentley and click on "OK" button. If you do not know these information please contact you system administrator. Before accepting the entered information you may also chose to click on the 'Test Connection' button to confirm that the entries are correct.

After the information is accepted by the system, program will then display all the available licenses for your usage as shown in the following dialog box.

Section A: Installation Guide



The security system is now in place. Before you start using STAAD.Pro you will need to configure the license as per instructions provided in section **A2** titled **Bentley SELECT Configuration Tool for STAAD.Pro**

c. Local SELECT Server Installation

Overview

This is for installations which use a local server on the client network to authenticate the Bentley SELECT license required to run STAAD.Pro.

Instructions

1) Obtain your SELECT ID. This will be supplied by Bentley.

2) Using your web browser, go to the URL

<http://appsnet.bentley.com/myselected/>

and use your SELECT login credentials to log on to this site

3) Download the SELECT Server XM Edition

4) Run this installation on the server that will be the SELECT Server.

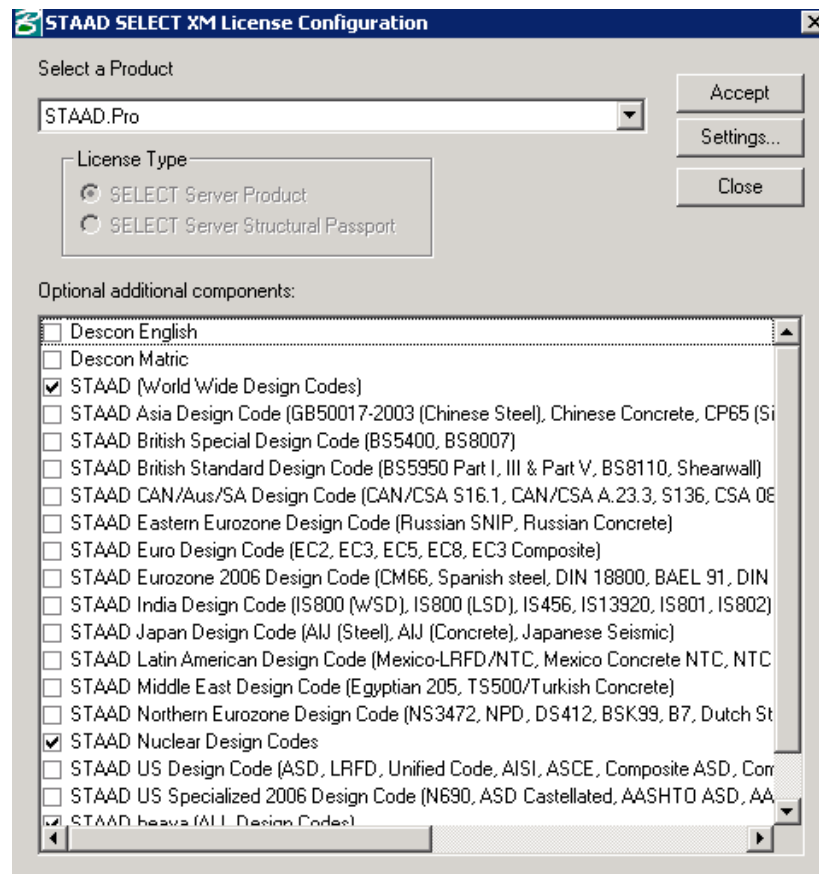
Details of the SELECT Server installation are included in the download.

A2.Bentley SELECT Configuration Tool For STAAD.Pro

This section is obsolete in the context of STAAD.Pro V8i. However this section is included in this document for compatibility with the previous versions of STAAD.Pro.

STAAD.Pro V8i no longer needs to be specifically configured to use “Structural Passport” license. However those who were running previous versions of STAAD.Pro with “Universal Structural” or “Structural Passport” license configuration may need to run this application once and click the **Accept** button (without doing anything else). This step will rewrite the license configuration in appropriate format in Windows registry database.

The “STAAD SELECT XM License Configuration” tool (shown next) can be accessed from Start | Programs | STAAD.Pro V8i | SELECT License Tools | STAAD SELECT XM License Configuration as shown next.



Section A: Installation Guide

This dialog box allows the user to select a combination of licenses that are likely to be accessed from a particular installation of STAAD.Pro on a workstation or laptop. However, in the context of STAAD.Pro V8i, it is not at all recommended to use this application to reconfigure the design code license requests. User should rather use the “License Configuration” interface as shown below on the start page of STAAD.Pro application



License Configuration		
<input checked="" type="checkbox"/> Advanced Analysis Engine	<input type="checkbox"/> Indian Design Codes	<input type="checkbox"/> Middle Eastern Design Codes
<input checked="" type="checkbox"/> US Design Codes (Standard)	<input type="checkbox"/> Asian Design Codes	<input checked="" type="checkbox"/> Global Design Codes
<input type="checkbox"/> US Specialized Design Codes	<input type="checkbox"/> Japanese Design Codes	<input type="checkbox"/> Nuclear Design Codes
<input type="checkbox"/> British Design Codes (Standard)	<input type="checkbox"/> Eurocodes	<input checked="" type="checkbox"/> STAAD.beava (Bridge Codes)
<input type="checkbox"/> British Specialized Design Codes	<input type="checkbox"/> Euro-zone - Central Design Codes	<input type="checkbox"/> DESCON English
<input type="checkbox"/> Latin American Design Codes	<input type="checkbox"/> Euro-zone - Northern Design Codes	<input type="checkbox"/> DESCON Metric
<input type="checkbox"/> Candian/Australian/SA Design Codes	<input type="checkbox"/> Euro-zone - Eastern Design Codes	

Section B: Updating legacy Copy Protection Systems

B1. Updating Legacy Copy Protection System

If you are updating an older version of STAAD.Pro to STAAD.Pro V8i, that was not secured with Bentley SELECT licenses, that system/device should not be used to operate STAAD.Pro V8i. Contact your local Bentley software provider and request the licenses that you require.

Notes:

STAAD.Pro V8i is designed only to operate with valid Bentley SELECT licenses.

STAAD.Pro V8i should not be installed onto a workstation that has any version of STAAD.Pro 2007 currently installed without first uninstalling STAAD.Pro 2007. The two applications will cause conflict and may result in undesired behavior.

Section C: Troubleshooting

C1: SELECT based license

Select License Information is not yet configured or incomplete

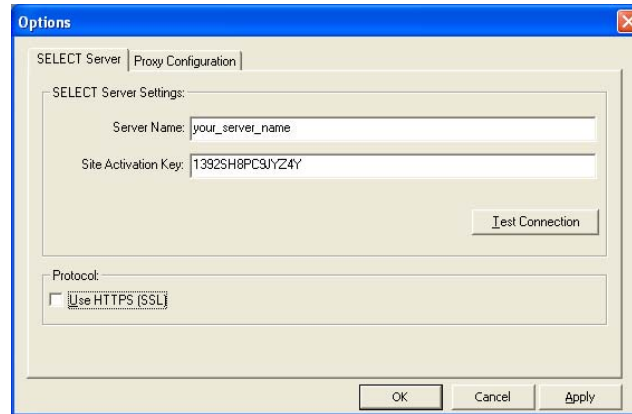
The above message means that the SELECT server has not been configured or license information is incomplete. To rectify this error go to Start | Programs | STAAD.Pro V8i| SELECT License Tools | Bentley SELECT License Management Tool

The License Management Tool dialog box will come up as shown next.



Click on OK and the following dialog box will be displayed

Troubleshooting



You will need to key in the Server Name and the Site Activation Key. After typing in these information, click on Test Connection and you will get a message verifying the server name and the activation key. Click on OK and you will be able to see the available licenses

To visit our FAQ/Knowledge Base and Discussion Group, you may visit the wiki pages hosted at <http://communities.bentley.com> web site.

The FAQ on STAAD.Pro product is hosted at the following URL:

http://communities.bentley.com/Wiki/view.aspx/Structural_Product_TechNotes_And_FAQs/
