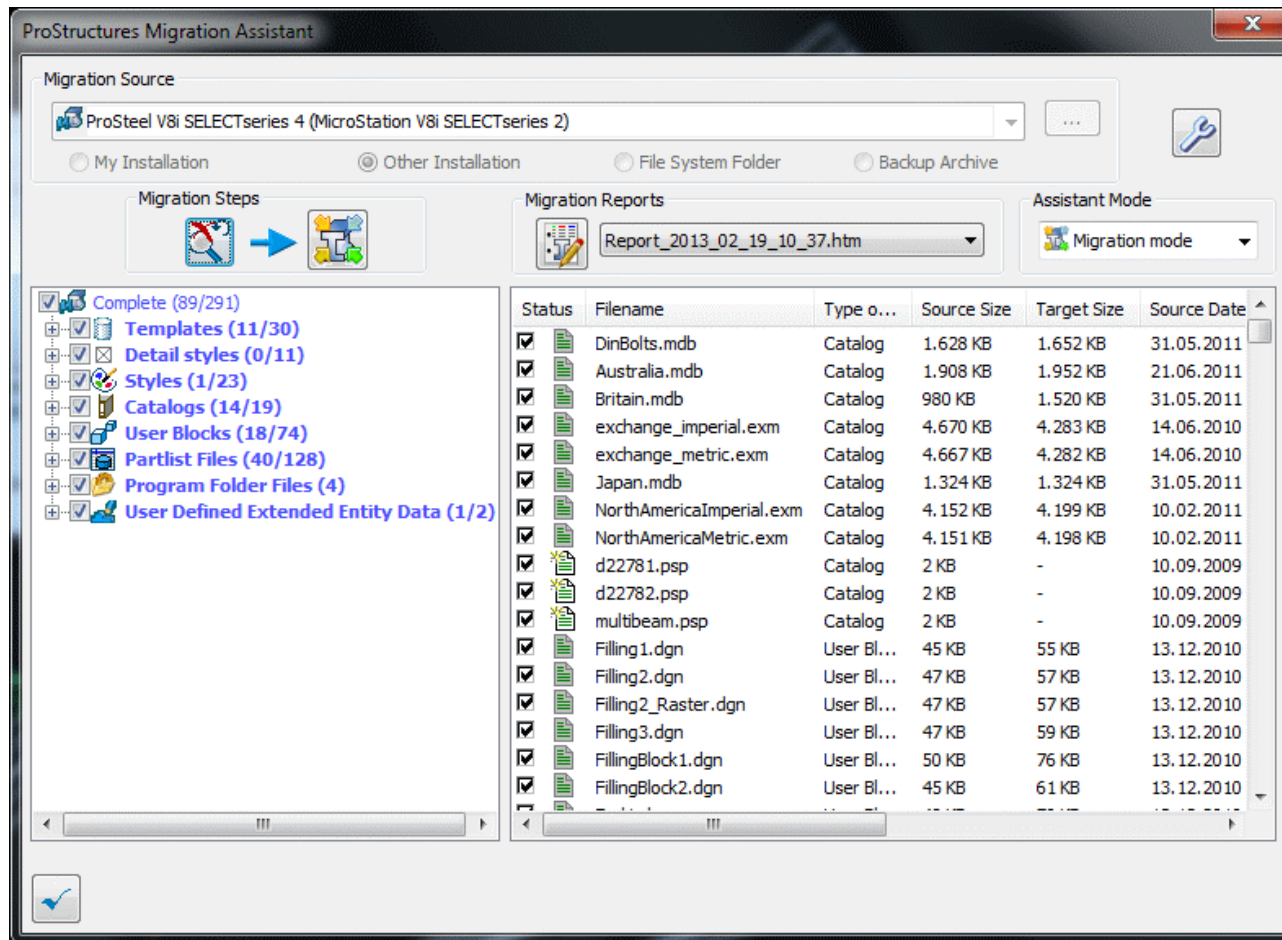


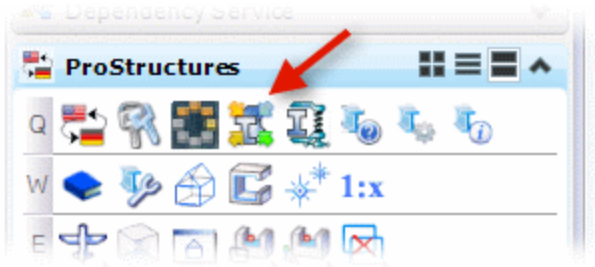
ProStructures Migration Assistant

- A tool to import ProStructures data into current installation



Starting Migration Assistant:

- From the ProStructures toolbar:
(not implemented yet)



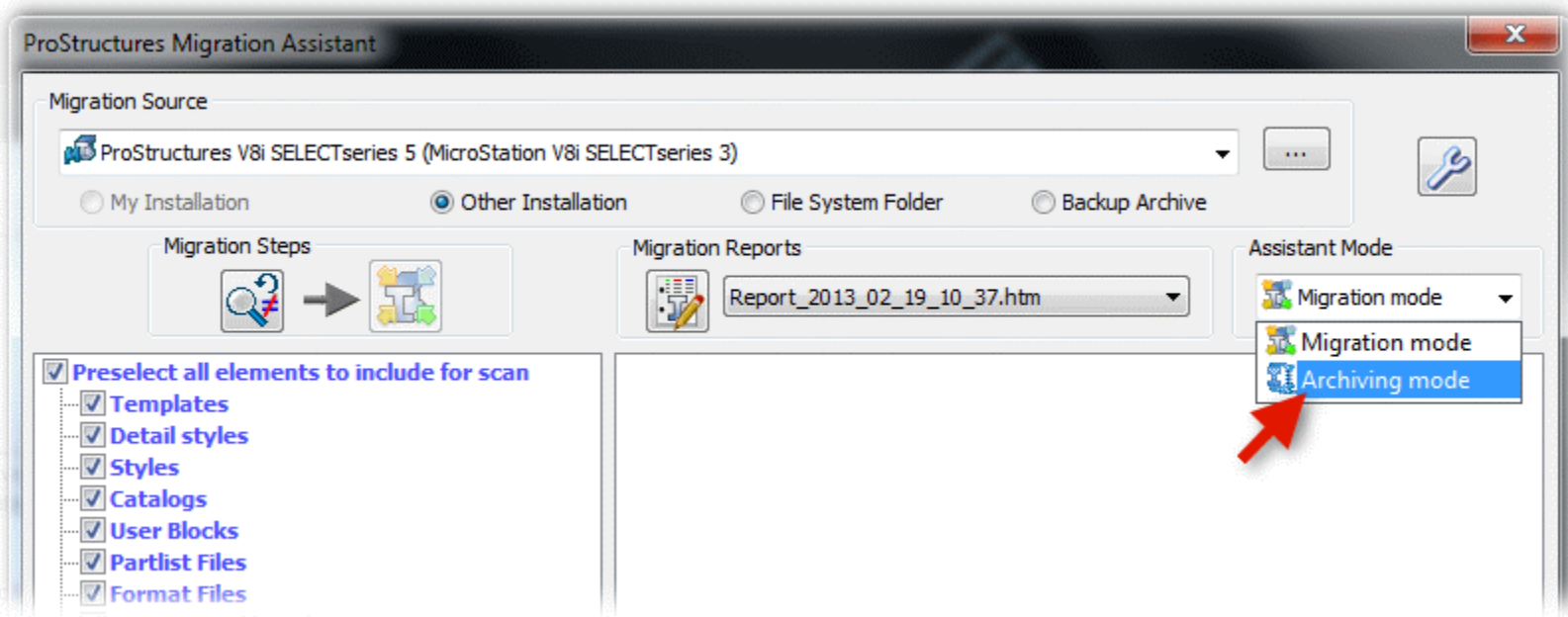
- Via Key-In:

MicroStation: `prostructure migrate`

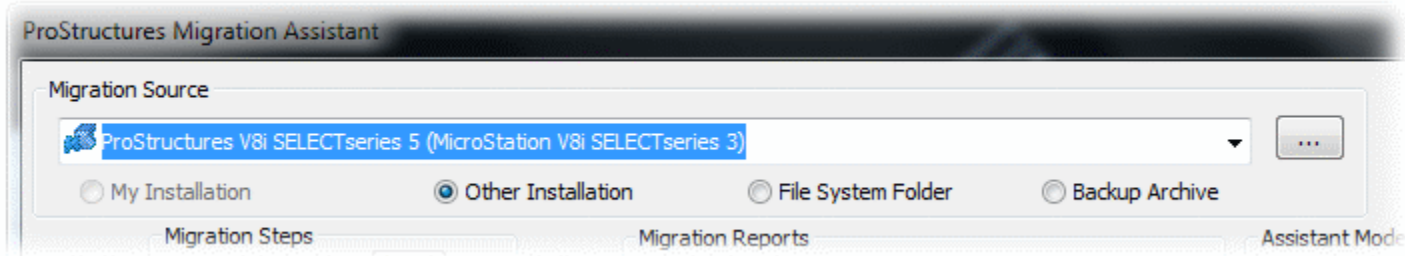
AutoCAD: `PS_MIGRATE`

Switching between Migration Assistant and Archiving Assistant:

- With the combo in group Assistant Mode at the right side, it is possible to switch between Migration and Archiving mode:



1st Step: Select Migration Source:



- **Other Installation:**

Any other installation on your machine

- **File System Folder:**

Any file system folder containing ProStructures installation data is possible. The folders from the other installations are in the preset list.

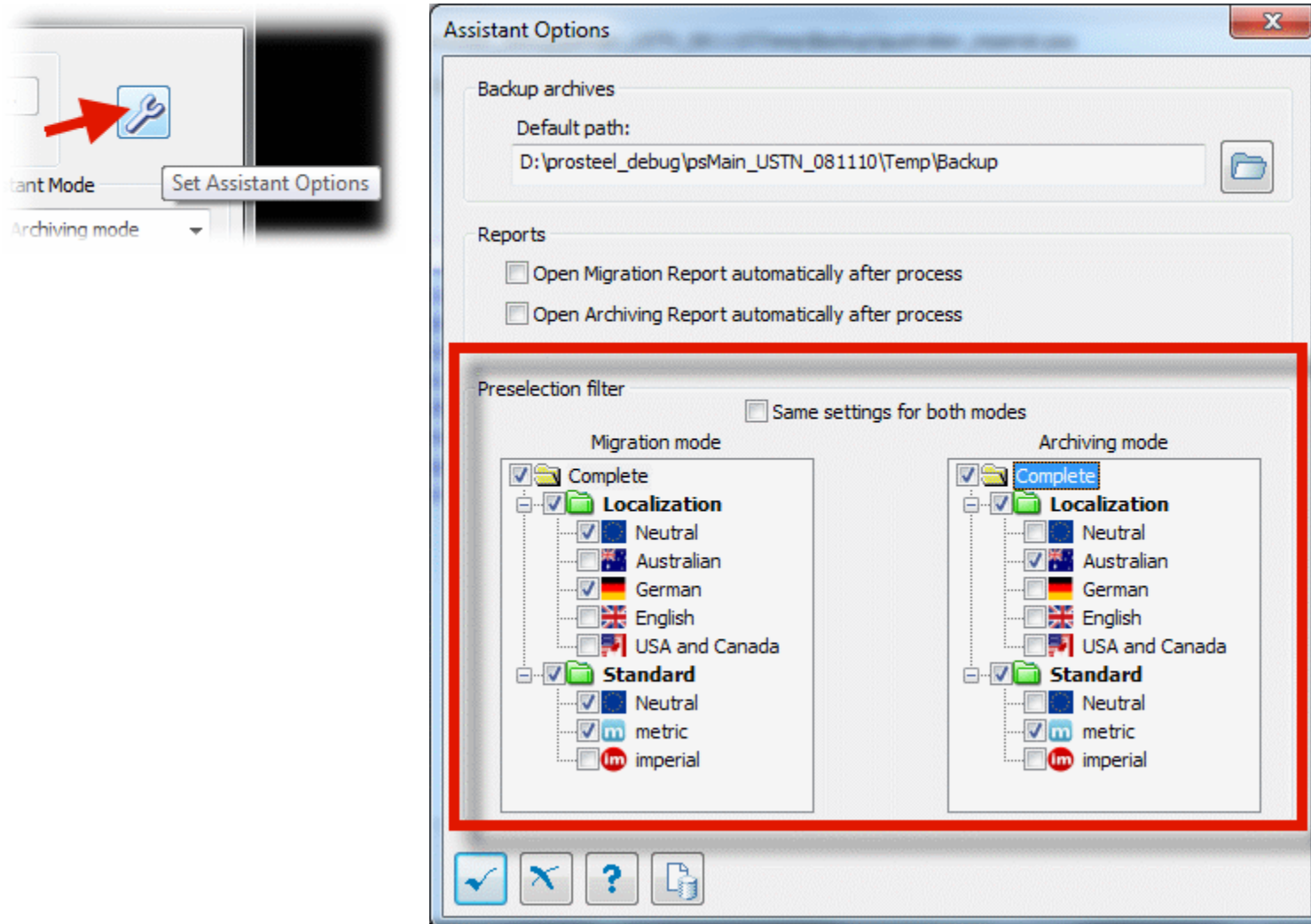
- **Backup Archive:**

Any psa-file from any folder is possible. The backup archives from the default path (see options dialog) are in the preset list.

For more information about psa-files see Archiving Assistant documentation

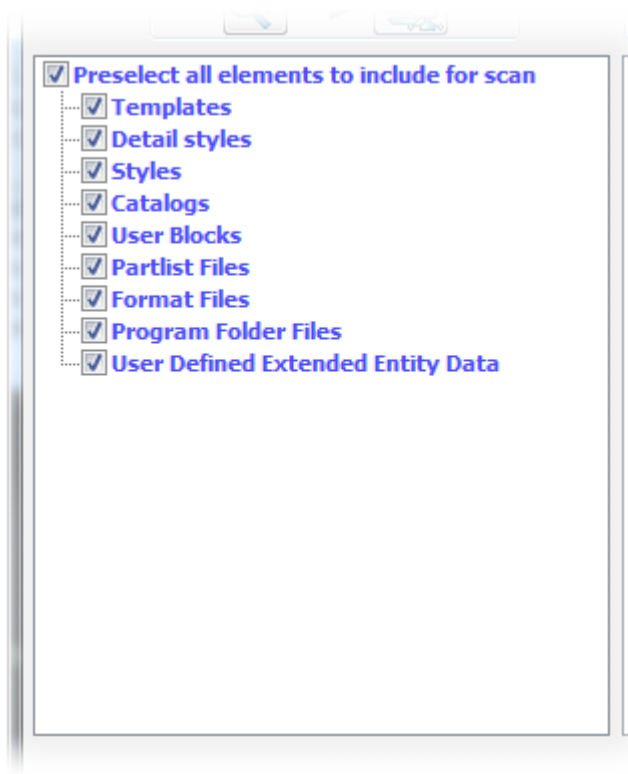
2nd Step: Set preselections:

- Localization and Standard:



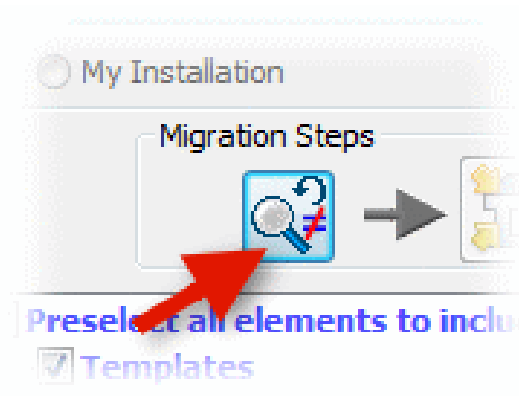
- **ProStructures Types to be included for scan process:**

In opposite to the Localization/Standard preselections in the options dialog above, the unselected types in this part are not shown later in the set of found elements



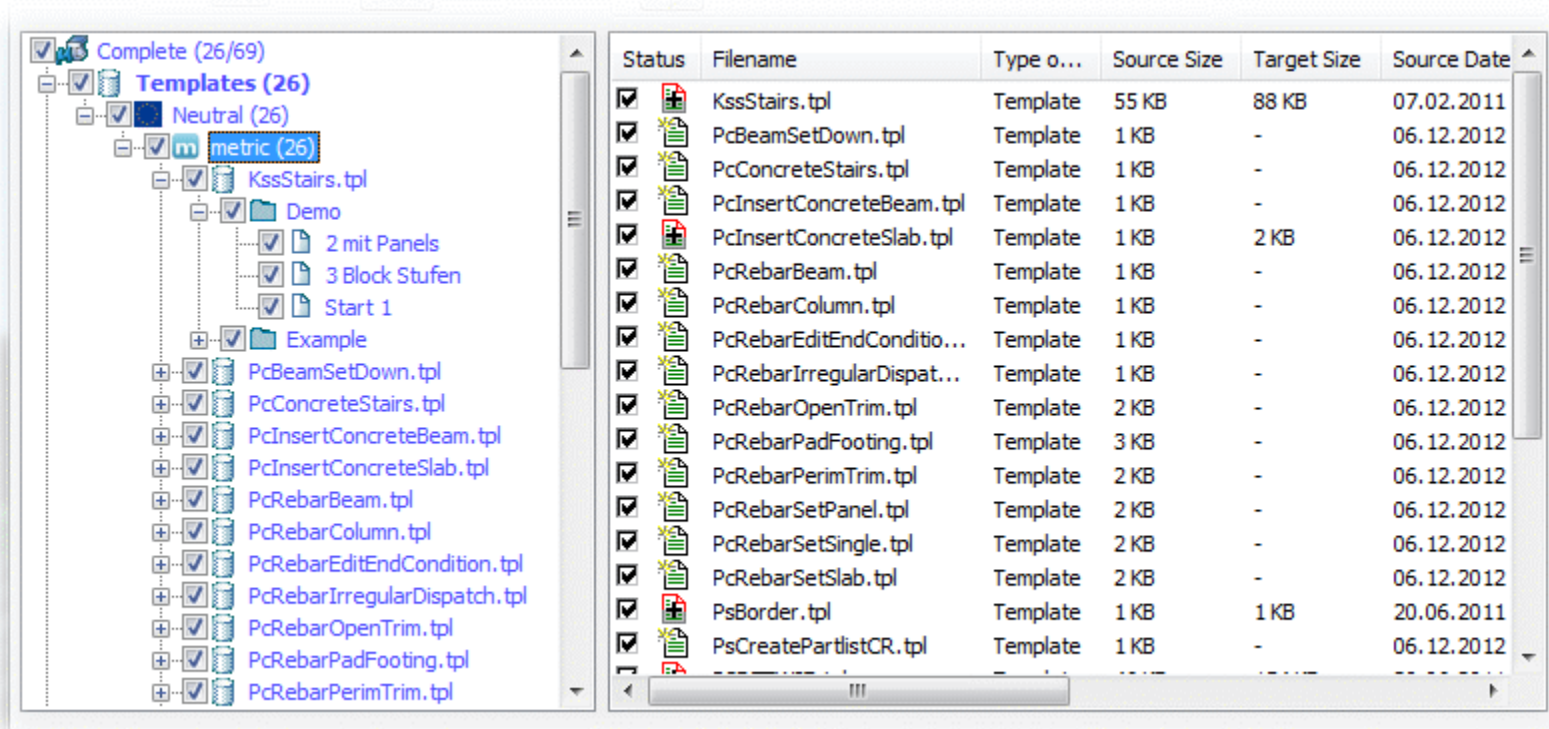
3rd Step: Retrieve differing elements:

- Starts the scan process in the selected migration source, using the preselection settings. The process compares all correspondent files in source and target and lists all the files that differ when finished.



4th Step: Choose elements to migrate:

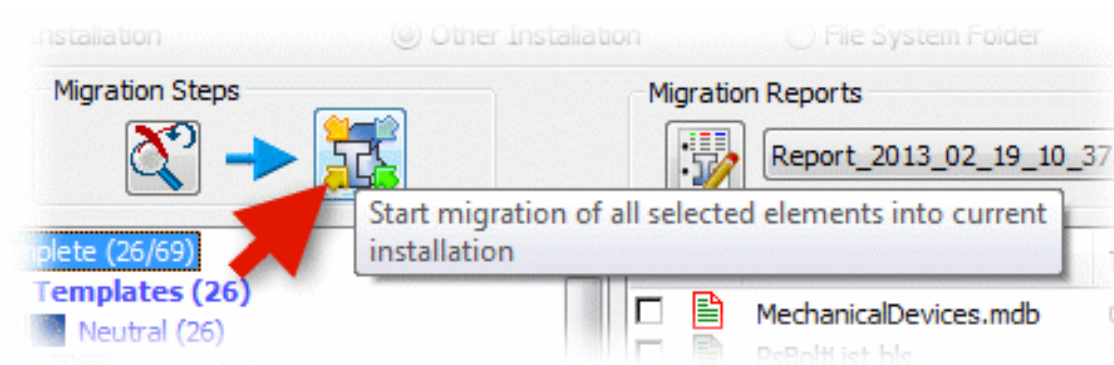
- All selected elements will be used for later migration process
- Selection changes in tree on the left are synchronized automatically in the list on the right and vice versa.
- The element to which the focus is set in the tree on the left, determines the subset in the list on the right.



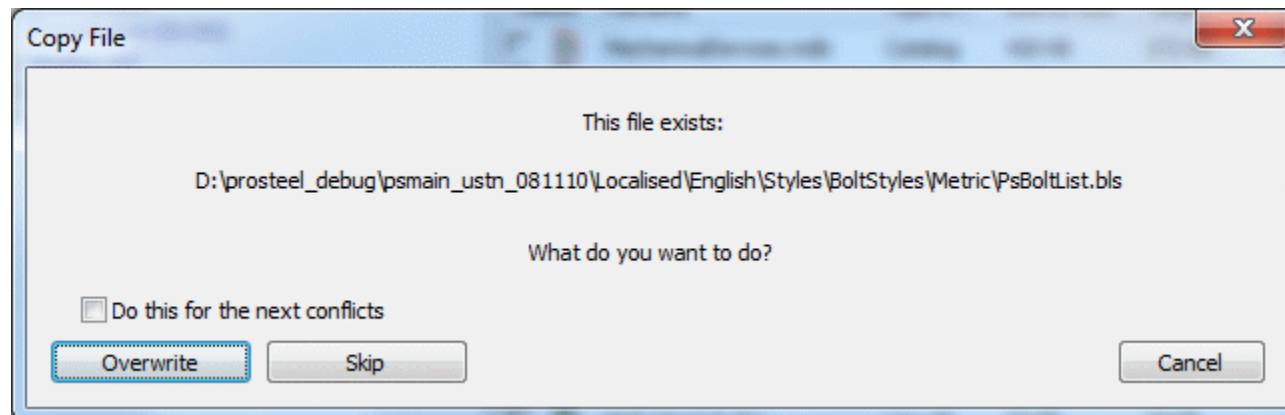
Status	Filename	Type o...	Source Size	Target Size	Source Date
<input checked="" type="checkbox"/>	KssStairs.tpl	Template	55 KB	88 KB	07.02.2011
<input checked="" type="checkbox"/>	PcBeamSetDown.tpl	Template	1 KB	-	06.12.2012
<input checked="" type="checkbox"/>	PcConcreteStairs.tpl	Template	1 KB	-	06.12.2012
<input checked="" type="checkbox"/>	PcInsertConcreteBeam.tpl	Template	1 KB	-	06.12.2012
<input checked="" type="checkbox"/>	PcInsertConcreteSlab.tpl	Template	1 KB	2 KB	06.12.2012
<input checked="" type="checkbox"/>	PcRebarBeam.tpl	Template	1 KB	-	06.12.2012
<input checked="" type="checkbox"/>	PcRebarColumn.tpl	Template	1 KB	-	06.12.2012
<input checked="" type="checkbox"/>	PcRebarEditEndConditio...	Template	1 KB	-	06.12.2012
<input checked="" type="checkbox"/>	PcRebarIrregularDispat...	Template	1 KB	-	06.12.2012
<input checked="" type="checkbox"/>	PcRebarOpenTrim.tpl	Template	2 KB	-	06.12.2012
<input checked="" type="checkbox"/>	PcRebarPadFooting.tpl	Template	3 KB	-	06.12.2012
<input checked="" type="checkbox"/>	PcRebarPerimTrim.tpl	Template	2 KB	-	06.12.2012
<input checked="" type="checkbox"/>	PcRebarSetPanel.tpl	Template	2 KB	-	06.12.2012
<input checked="" type="checkbox"/>	PcRebarSetSingle.tpl	Template	2 KB	-	06.12.2012
<input checked="" type="checkbox"/>	PcRebarSetSlab.tpl	Template	2 KB	-	06.12.2012
<input checked="" type="checkbox"/>	PsBorder.tpl	Template	1 KB	1 KB	20.06.2011
<input checked="" type="checkbox"/>	PsCreatePartlistCR.tpl	Template	1 KB	-	06.12.2012

5th Step: Start the migration process:

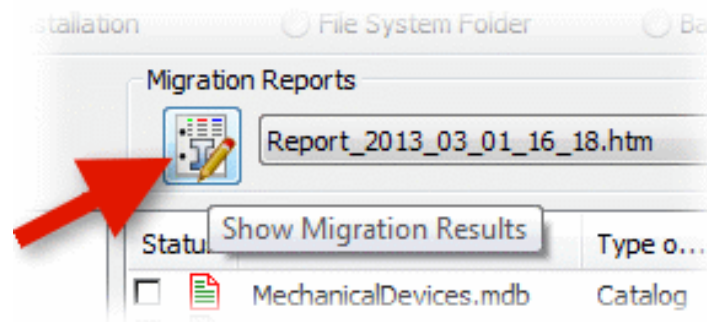
- All selected elements are migrated into my current installation.



- Before the assistant overwrites elements, a question box will appear.



6th Step: Check migration report file:



- All migration results are logged in a report file (html format).
- Recent is added automatically to the list (sorted by date)
- Stored in <TEMPPATH>\MigrationReports
- Migration reports are opened automatically after migration process, if option is set in options dialog:

