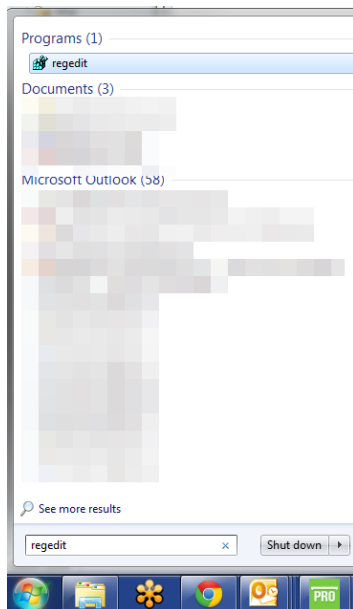
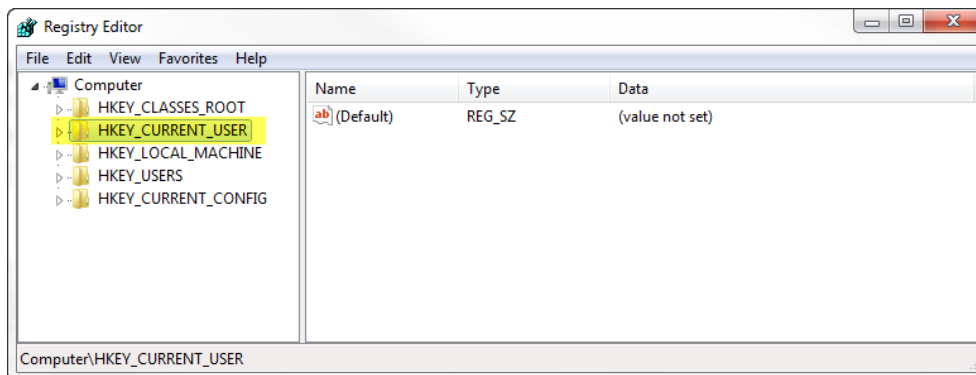


Clearing Synchro Registry Folders

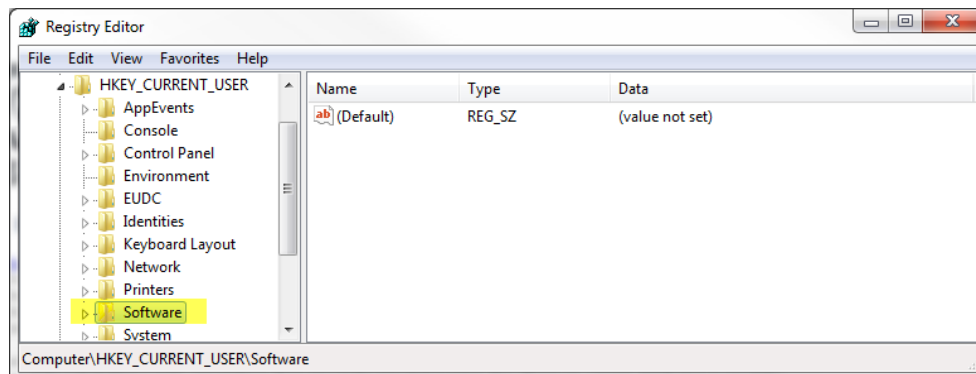
- 1) Make sure you have closed Synchro PRO and saved any necessary files.
- 2) In your Start menu type **regedit** & click on **regedit** to open the Registry Editor



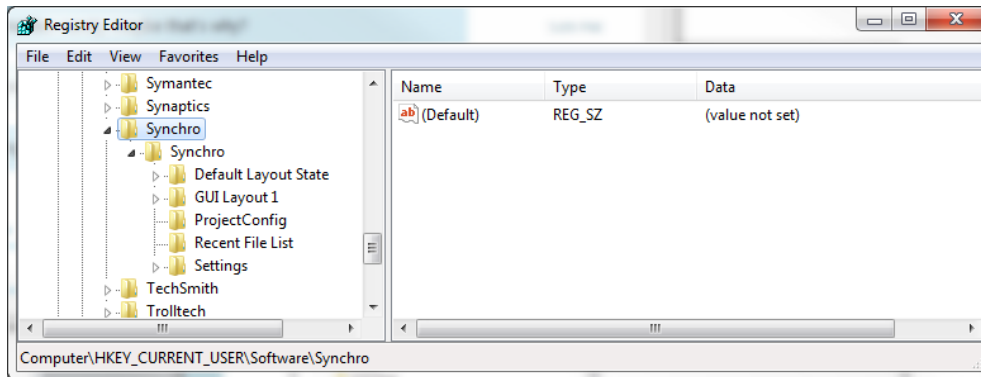
- 3) Inside of the Registry Editor expand **HKEY_CURRENT_USER**



- 4) Inside **HKEY_CURRENT_USER**, expand **Software**

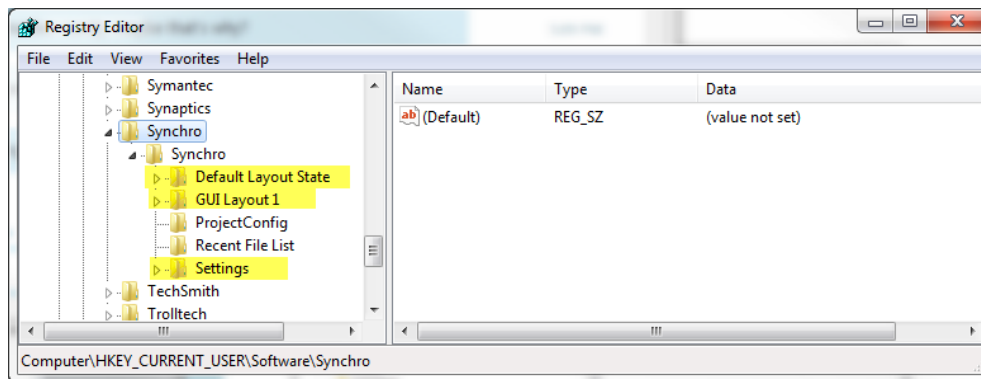


- 5) Inside **Software** expand the **Synchro** folder.



- 6) Delete

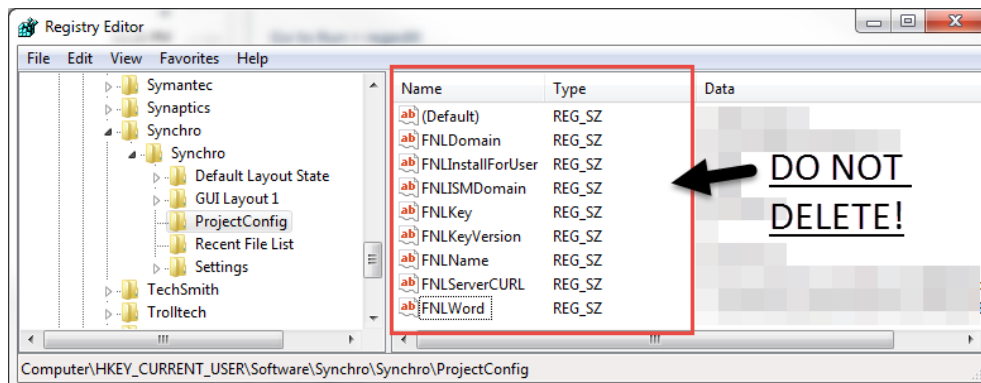
- a. HKEY_CURRENT_USER\Software\Synchro\Synchro\Default Layout State
- b. HKEY_CURRENT_USER\Software\Synchro\Synchro\GUI Layout x (x can be 1-4)
- c. HKEY_CURRENT_USER\Software\Synchro\Synchro\Settings



- 7) Open HKEY_CURRENT_USER\Software\Synchro\Synchro\ProjectConfig

- 8) Delete everything in ProjectConfig **EXCEPT**

- a. (Default)
- b. Anything starting with **FNL** (deleting these keys may remove your license information)



- 9) Close the Registry Editor & re-open Synchro.