

Linking with E-Tabs 2018



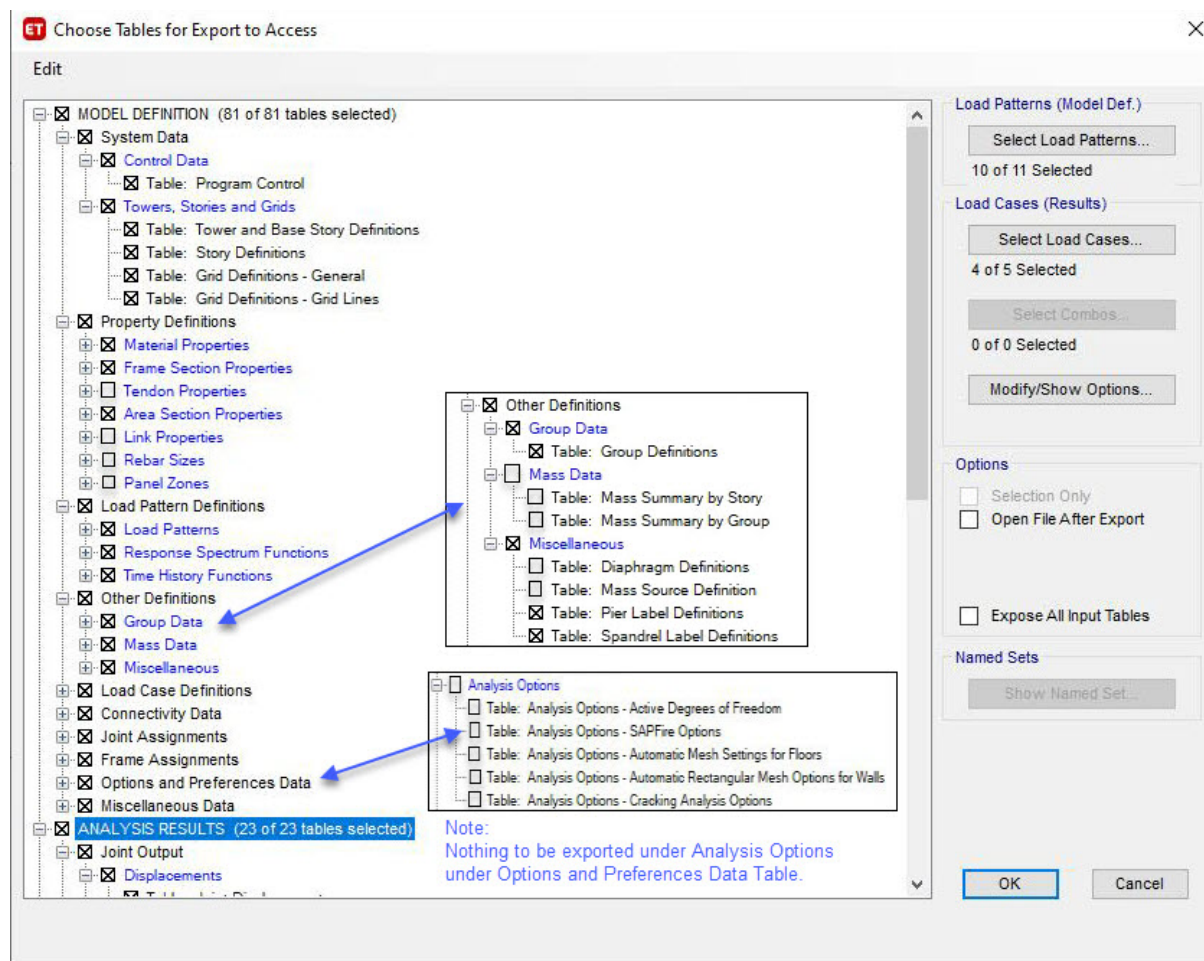
RCDC will import only the Access Database (.accdb) type of file which will be created from ETABS version 2018.

For creating the .accdb file,

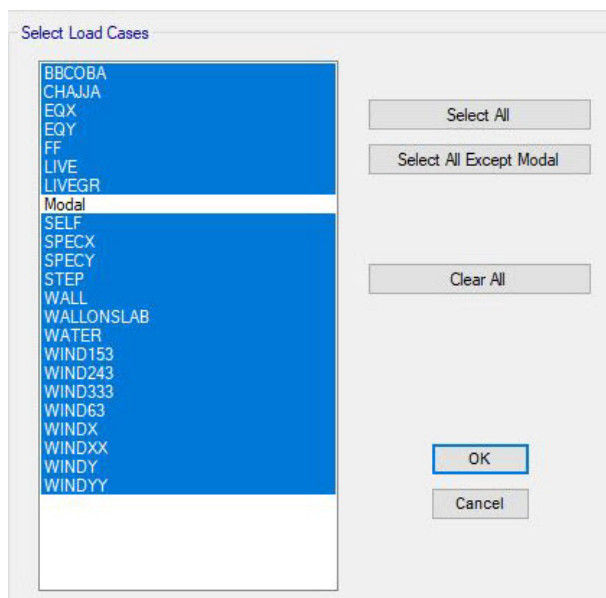
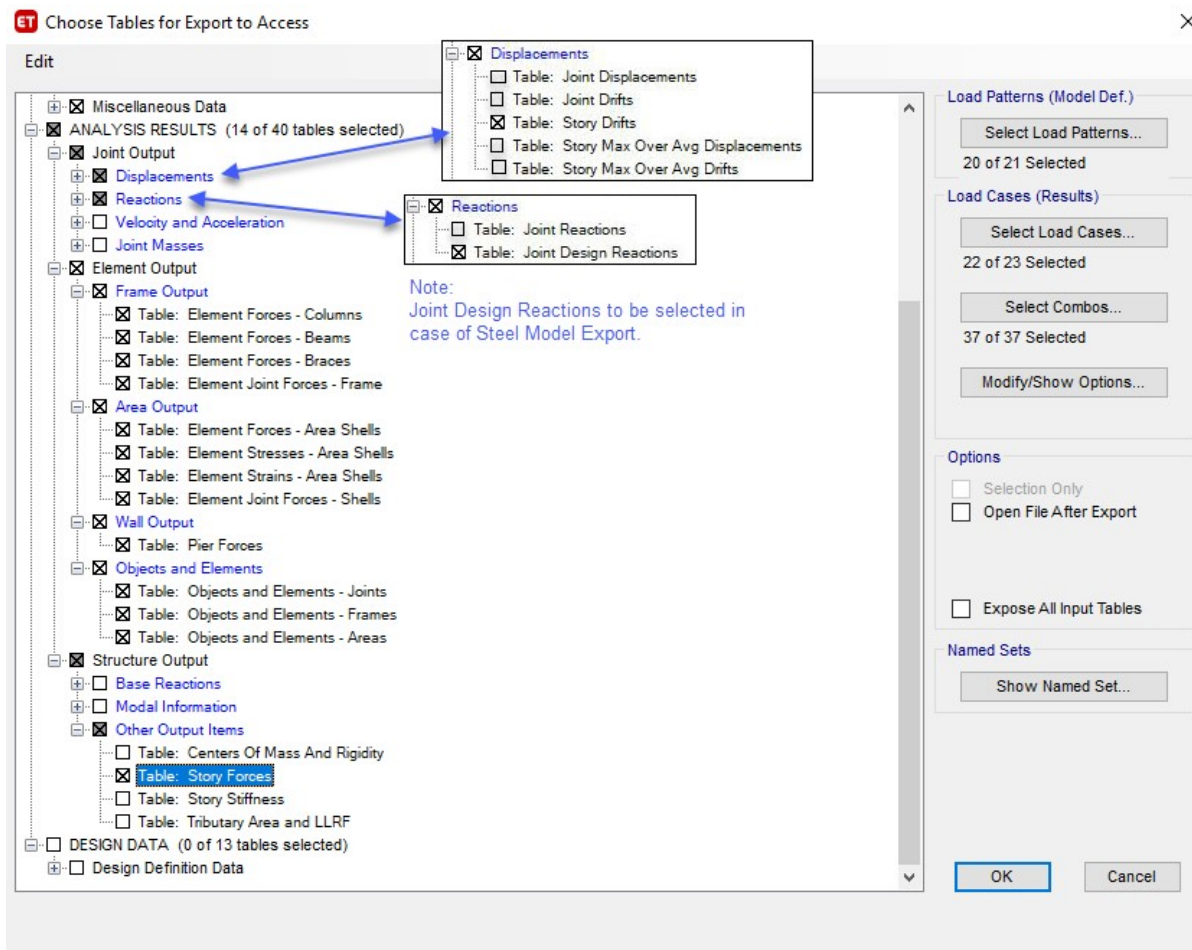
Go to File → Export → ETABS table to Access.

Under the Table for exporting to access, select table as per images below:

All input data i.e Model Definition needs to be exported as per below image.



Depending upon what you are designing, select Column forces or Beam Forces or Pier forces. You can create multiple filter files with the pertinent data.



Select all basic load cases in the setting "Select Cases / Combos". It is not essential to select the load combinations as RCDCC reads only the definition of the combinations and not the forces for the same. The forces for the combinations are computed during design time.

Note:

1. RDCDC will currently not support and read the models that are created with a multiple Tower type of arrangement .
2. The frame sections that are defined as General Section in ETABS will not be imported and identified by RDCDC. Users are advised to create 'SD' sections for such shapes .
3. RDCDC does not support 'Modal Forces' currently .
4. Output that is generated with any of the Multistep method is read in RDCDC. However, when the output forces are exported using the 'Step by Step method', the Max force i.e. the force of the last step will be considered in RDCDC which is same as the results fetched using 'Last Step' method. (Below image for ready reference)

Database Table Output Options

Base Reaction Location

☒ Program Determined

☐ User Specified

X

Y

Z

Mode Shapes

☐ All Modes

☒ Some Modes

Start Mode

End Mode

Buckling Modes

☐ All Modes

☒ Some Modes

Start Mode

End Mode

Multistep Static Results

☐ Envelopes

☒ Step-by-step

☐ Last Step

Nonlinear Static Results

☒ Envelopes

☐ Step-by-step

☐ Last Step

Modal History Results

☒ Envelopes

☐ Step-by-step

☐ Last Step

Direct History Results

☒ Envelopes

☐ Step-by-step

☐ Last Step

Load Combination Results

☒ Envelopes

☐ Multiple Values, If Possible

OK Cancel