



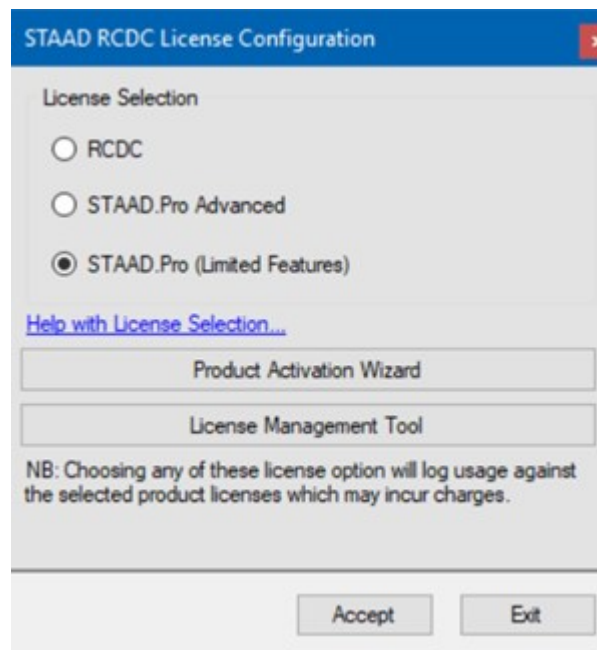
## Linking with STAAD Pro



RCDC can link to and directly import all data from an analysis model analyzed in STAAD Pro.

1. RCDC links directly to \*.std file, user has to just select this file.
2. Linking to STAAD Pro is managed by means of the 'Open Staad' functionality provided by STAAD.
3. Complementary versions of 'Open Staad' are part of the STAAD Pro installation.
4. No other settings need to be made in STAAD Pro for the analysis file to be compatible with RCDC .

RCDC Features for STAAD.Pro (Basic) License Users:



Some features of the Advanced Concrete Design workflow using the RCDC application is now available to STAAD.Pro (basic) license users.

The full set of features in RCDC is available to STAAD.Pro Advance license users. STAAD Pro (basic) users can use limited features of RCDC using the STAAD Pro. License

- Design of Column, Shear Wall and Beam will be available. Design of Pile cap, Footing and Slab will be restricted.
- Design of Water tank structure will be restricted.
- Advanced options like Redesign, Re-detail, grouping, merging, Update Design, Update Analysis file etc. will be restricted.
- Advanced design option like Crack Width will be restricted
- BOQ summary will be generated and options to change any settings will be restricted.

Other BOQ reports will also be restricted.

- BBS will be generated and options to change any settings will be restricted.
- Drawing output will be available to view on screen. Options to save the output in .dxf format, open the drawing in MicroStation will be restricted. Options to modify drawing settings and styles will be restricted.

RCDC File created with full license (RCDC or STAAD Pro, Advanced) will be restricted from opening in limited license mode. However, RCDC Files created with limited license can open in full license.

---