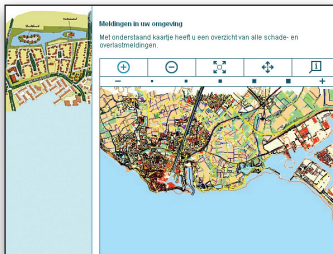


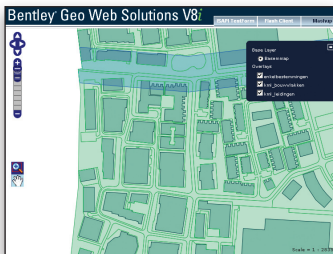


# BENTLEY® GEO WEB SOLUTIONS

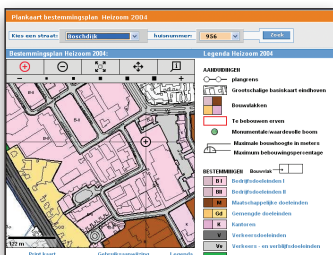
## INTEGRATE, PUBLISH AND SHARE GEOSPATIAL INFORMATION



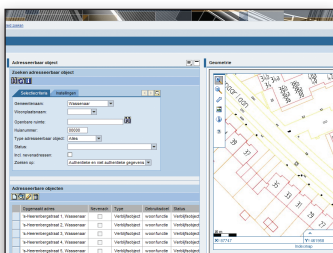
Public notification website.



Mashup with GeoJSON vector streaming.



Public website with zoning plan information.



Integrating geospatial data in a SAP environment.

Bentley Geo Web Solutions is a web services framework that can be used to integrate interactive maps in a website, or to integrate geospatial information in organizational workflows. It allows for the sharing and publishing of geospatial data on multiple platforms. It integrates geospatial information in an organization's workflow using industry standards. Geospatial specialists are empowered to prepare geo-services for webmasters, allowing them to easily add geospatial content to a website.

### Geospatial Information Integration

Previously, the main focus of geospatial departments was to create digital maps and to organize spatial information in a digitally structured way. The increased availability of digital spatial information generated the requirement to share these data across the organization. With Bentley® Geo Web Publisher™ the geospatial specialist already has the means to create rich out-of-the-box websites to publish and share geospatial data. Bentley Geo Web Solutions now addresses the need to integrate geospatial data in your business workflow and to publish this data using industry standard formats and commonly accepted mapping platforms.

### Web Services

Bentley Geo Web Solutions offers a framework with geospatial (SOAP) web services, geared towards publishing and information integration. It acts as a service-driven interface between spatial information and a website (frontoffice) or workflow system (midoffice), providing the building blocks for successfully integrating geospatial content in regular day-to-day business workflows.

Each service definition contains information about available maplayers, attribute reports, and services allowing administrators to tailor a Bentley Geo Web Solutions service to perform the tasks for which it is intended. This can be anything from a full blown mapping and query service, simple geocoding and interactive mapping service, to spatial data querying services with no mapping component whatsoever. A webmaster or CMS Administrator simply selects the appropriate service to integrate in a webpage or workflow.

### Mashups

Bentley Geo Web Solutions offers web services to serve geospatial data to popular mapping platforms like Google

Maps or Google Earth, Microsoft Virtual Earth and Open Layers, allowing the creation of custom mapping mashups, overlaying the base maps with your own geographical information layers. Supported file formats are OGC standards GeoJSON, KML and GML.

### Enable the Casual GIS User

Unlike the GIS specialist, a casual (internet) user does not have day-to-day exposure to sophisticated, high-end mapping tools. One of the Bentley Geo Web Solutions primary goals is to make it quick and easy for geospatial administrators and developers to deliver geospatial information to the casual GIS user. With that in mind, Bentley Geo Web Solutions includes an easy-to-use, easy-to-configure Adobe Flash client with a user interface that is designed to be interactive and intuitive. This allows for the rapid development of high-quality geospatial applications with the casual GIS user in mind.

### Workflow Integration

The Bentley Geo Web Solutions architecture allows for easy integration with any third party workflow system. Integration can take many useful forms; e.g. expanding a building permit request application form with a map with markup information, or requesting and exchanging the geometry of parcel information in GML. Any workflow or business process that deals with location based information benefits from the web services framework that Bentley Geo Web Solutions offers.

## SYSTEM REQUIREMENTS

### Processor:

Intel Pentium-based or AMD  
Athlon-based

### Operating System:

Windows 2000 Server,  
Windows 2003 Server

### Memory:

1 Gig (2 Gig or more typically results  
in better performance).

### Hard Disk:

200 MB minimum free disk space,  
Microsoft .NET Framework 2.0

### Software:

Microsoft Internet Information Server  
(IIS), Map server with WMS server  
capabilities \*

\*Bentley Geo Web Publisher is the  
preferred map server and required for  
publishing and creating DGN XFM data

## ABOUT BENTLEY

Bentley Systems, Incorporated  
is the global leader dedicated  
to providing comprehensive  
software solutions for sustaining  
infrastructure. Architects, engineers,  
constructors, and owner-operators  
are indispensable in improving our  
world and our quality of life; the  
company's mission is to improve  
the performance of their projects  
and of the assets they design, build,  
and operate. Bentley sustains the  
infrastructure professions by helping  
to leverage information technology,  
learning, best practices, and global  
collaboration – and by promoting  
careers devoted to this crucial work.

For more information, visit  
[www.bentley.com](http://www.bentley.com)

## BENTLEY OFFICES

### Corporate Headquarters

685 Stockton Drive  
Exton, PA 19341 USA  
1-800-BENTLEY (1-800-236-8539)  
Outside the US +1 610-458-5000

### Bentley Systems Europe B.V.

Wegalaan 2  
2132 JC Hoofddorp  
Netherlands  
+31 23 556 0560

### Bentley Asia

Unit 1402-06, Tower 1,  
China Central Place,  
No. 81 Jianguo Road,  
Beijing, 100025, China  
+86 108 518 5220



## BENTLEY GEO WEB SOLUTIONS AT-A-GLANCE

### Standard Solution

- Bentley Geo Web Solutions is a framework of web services that can be used to integrate interactive maps in a website, or to integrate geospatial data in your business workflows
- Fully documented toolkit for customizing, enhancing and extending websites

### Web Services

- XML based ISAPI web services
- .Net SOAP web services
- Storing geometry and associated attributes in DGN XFM or Oracle Spatial file formats
- Stream geometry and attribute information in OGC standard formats KML, GeoJSON and GML
- Search and locate based on attribute data
- Attribute data based on spatial masks

### Easy Integration of Geospatial Data in Websites

- Interactive maps and dynamically created raster maps
- Streaming to mashup platforms like Microsoft Virtual Earth, Google Maps, Open Layers
- Flash-mapping interface delivered with Bentley Geo Web Solutions

### Supported Geodata Sources

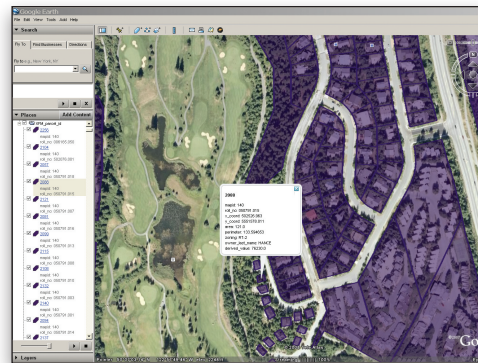
- Oracle Spatial
- OLE DB (XY coordinate for point geometries)
- BGS layers (file type optimized for high-performance publishing)
- DGN XFM

### Adobe Flash Interface

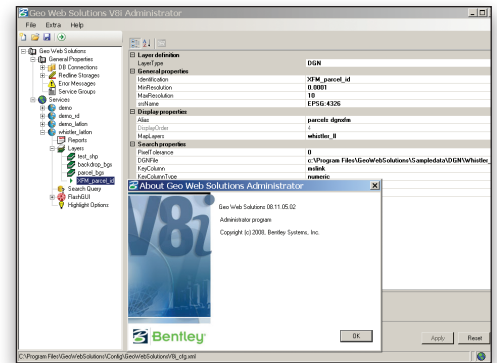
- Navigation tools
- Selection tools
- Redlining tools
- Extensive API for optimal control

### Configuration

- Comprehensive Administrator for complete configuration of the web services
- Windows based .NET application



Streaming KML with attributes in Google Earth.



Bentley Geo Web Solutions Administrator.