

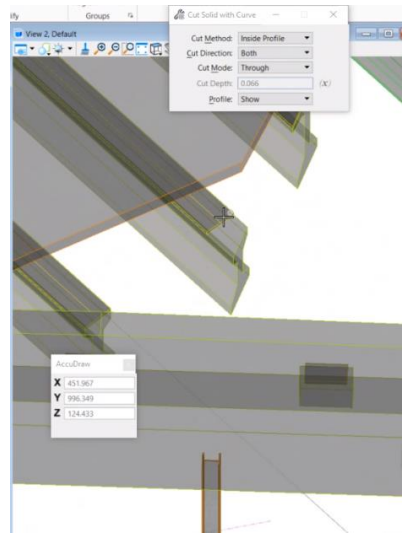
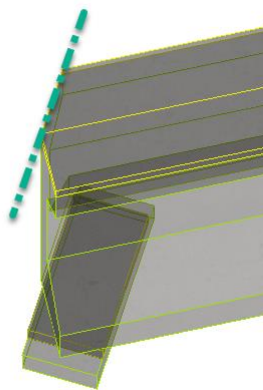
What's New in OpenBridge Designer CONNECT Edition v10.08.02?

August, 2020

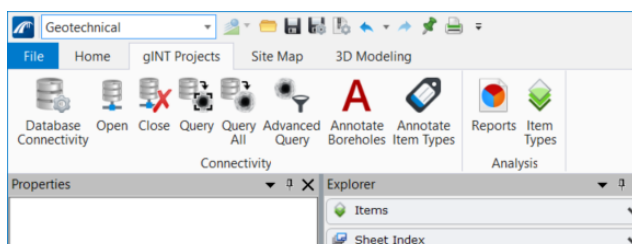
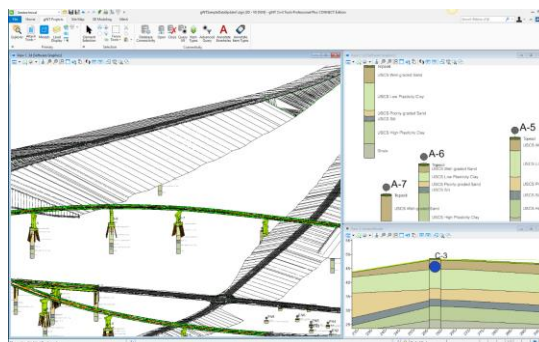
Version	V10.08.02
Operating Systems	Windows 8 x64, Windows 10 x64
Language	English

What is New & Changed?

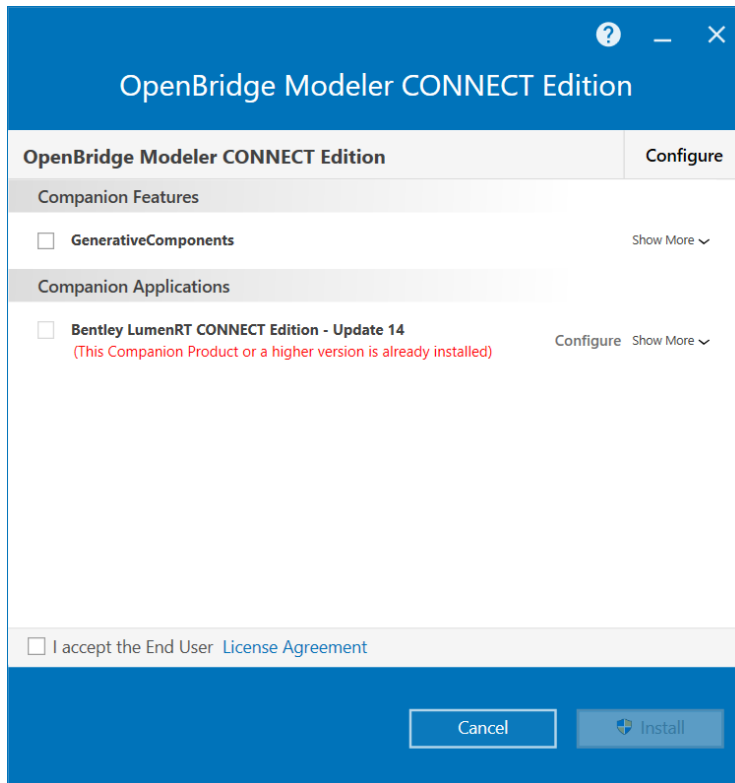
1) Allow users to modify OBM Objects



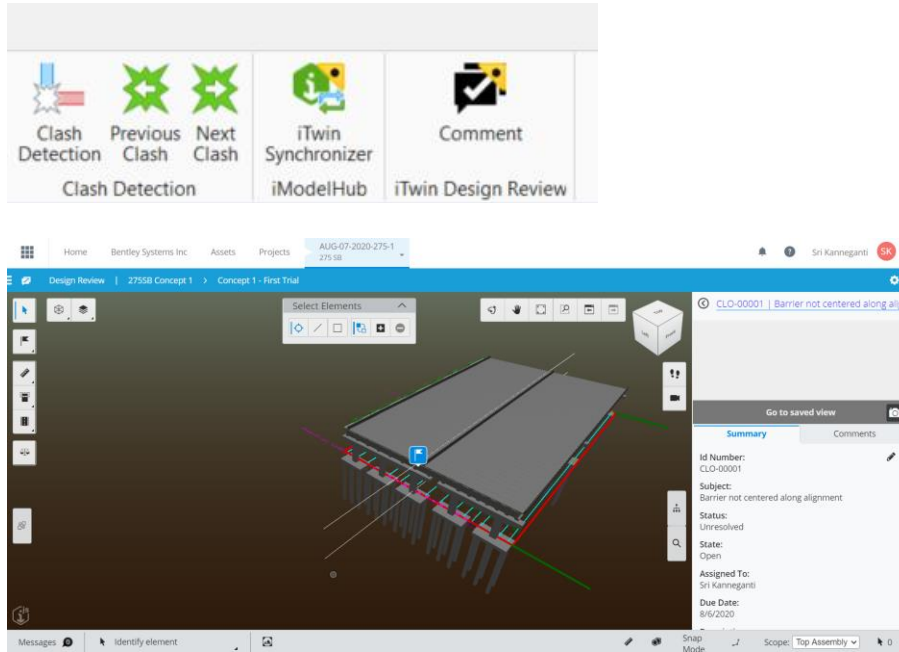
2) GINT Civil Tools (included free as part of OBD license)



3) Optional Installation of Generative Components



4) iTwin Services (Technology Preview)



- 5) Enhanced Consolidated GUI for Concrete Design Component (LBC)
- 6) Louisiana State Design Code for Concrete Design Component (LBC)
- 7) Enhanced Object Transfer from OBM to Analytics
- 8) Import and Update Build Order for Segmental Bridges Transferred from OBM to Complex Design Component (RM Enterprise)
- 9) Analytical Customization to Comply with Australian Design Code

Note: OpenBridge Designer versions are not backward compatible, i.e. a file created using a newer version of software cannot be opened using older version and those files cannot be converted to an older file format.

Subscription Entitlement Service (SES):

This product version utilizes Subscription Entitlement Service, which is not supported by SELECT activation key(s). SES is a free service, featuring new behavior to enhance your organization's user administration and security with mandatory user sign-in via CONNECTION Client to access the application. If you are already signed in to the CONNECTION Client, you have met this prerequisite. If you have not, please refer to the Administrator's Resource Center and/or contact your administrator for assistance in the registration and sign-in process.

Note: You may need to contact your system administrator if your organization uses a proxy server to connect to the Internet. Click the Proxy... button in the Product Activation Wizard to display a dialog for entering these connection settings.
