
AssetWise

(v. 16.7.60)

What's New



Last Updated: May 09, 2021

Table of Contents

Chapter 1: New in AssetWise v16.7.60 3

Chapter 2: What's New - Previous Versions 4

New in AssetWise v16.7.59 4

New in AssetWise v16.7.58 4

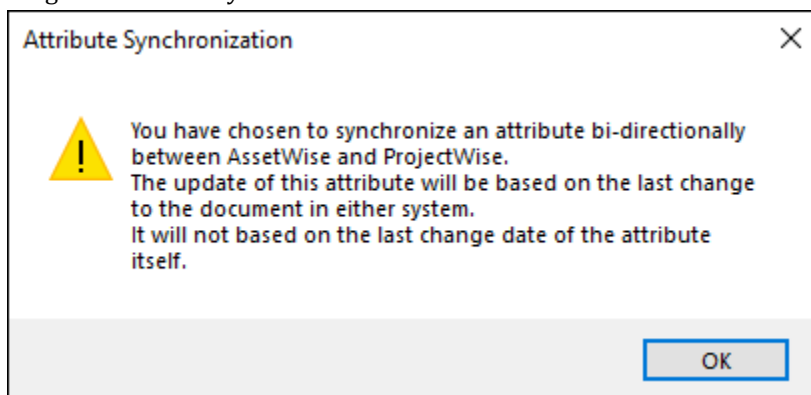
New in AssetWise v16.7.57 4

New in AssetWise v16.7.60

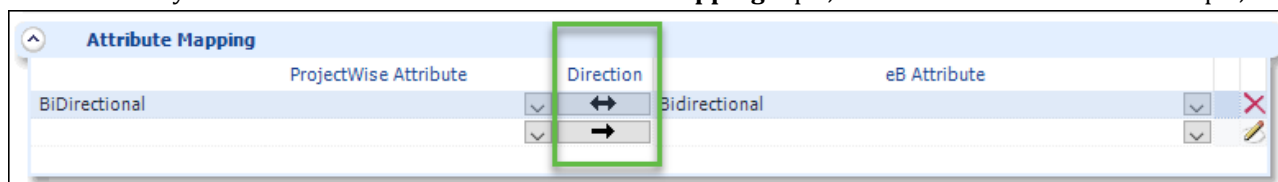
Bidirectional Attribute Updating

With this release, AssetWise now allows for bidirectional updates to documents registered in ProjectWise or AssetWise. For registered documents, all bidirectional attribute values will originate from the system that contains the document being registered. For example, if the document is registered from ProjectWise to AssetWise, bidirectional attribute values will originate from ProjectWise. Likewise, if the document is registered from AssetWise to ProjectWise, bidirectional attribute values will originate from AssetWise.

If the action is an attribute synchronization, the bidirectional attribute value will originate from the document that was most recently updated. Therefore, if a document is updated in both AssetWise and ProjectWise, the most recently updated document's attributes are accepted and updated. You will also receive a warning notification when setting bidirectional synchronization:



Bidirectional synchronization is defined in the **Attribute Mapping** topic, in AssetWise Director. For example,



2

What's New - Previous Versions

This chapter describes What's New for previous versions of AssetWise.

New in AssetWise v16.7.59

This version is a maintenance release.

New in AssetWise v16.7.58

This version is a maintenance release.

New in AssetWise v16.7.57

AssetWise ALIM ProjectWise Connector

There are several new enhancements in this version of AssetWise:

AssetWise projects can now be registered with ProjectWise.

AssetWise documents related to AssetWise projects with a configured relationship can now be registered with ProjectWise.

Two new configurations to support level 2 (Greenfield) ProjectWise integration:

ProjectWiseDocumentToProjectRelationshipTemplateName and **ProjectWiseLevel2RevisionAction**.

These settings are defined in System Settings > ProjectWise.

Improvements have been made to Director Synchronization options that improve usage indications.

ProjectWise environment attributes can be used to find documents in AssetWise.

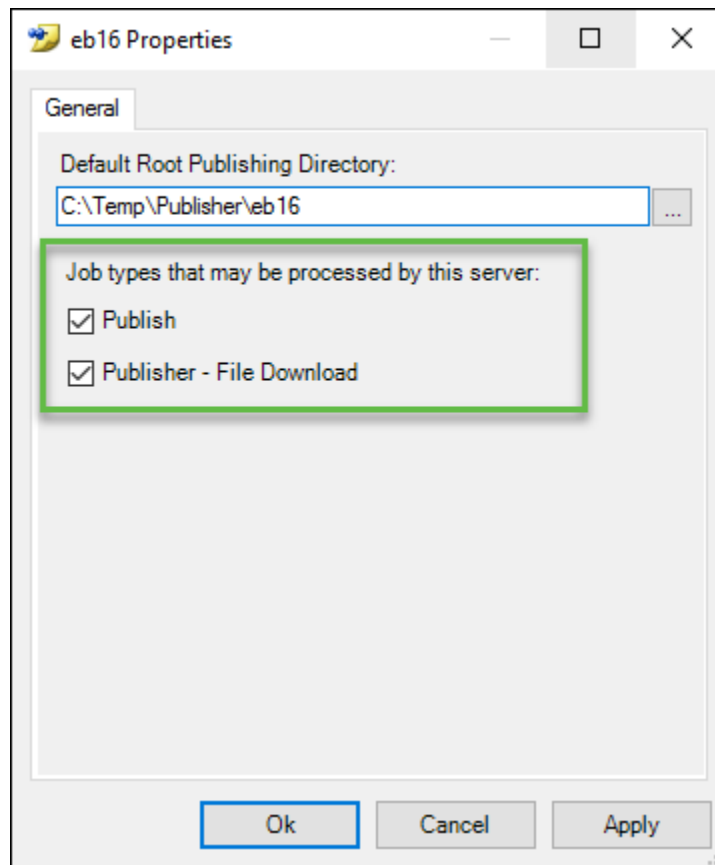
Publisher Service

You can now select which types of jobs that the Publisher queue can be process on each server. This allows for servers to be configured to process specific types of Publish jobs, such as **Publish** only, **Publisher - File Download** only, or both.

This feature is defined via the AssetWise System Management Console **Publisher** service. For example,

What's New - Previous Versions

New in AssetWise v16.7.57



For existing installations, both job types are automatically selected if the Publisher queue is enabled.