

7 RAPID DRAWDOWN ANALYSIS

This example concerns the stability of a reservoir dam under conditions of drawdown. Fast reduction of the reservoir level may lead to instability of the dam due to high pore water pressures that remain inside the dam. The dam to be considered is 30 m high. The top width and the base width of the dam are 5 m and 172.5 m respectively. The dam consists of a clay core with a well graded fill at both sides. The geometry of the dam is depicted in Figure 7.1. The normal water level behind the dam is 25 m high. A situation is considered where the water level drops 20 m. The normal phreatic level at the right hand side of the dam is 10 m below ground surface. The sub-soil consists of overconsolidated silty sand.

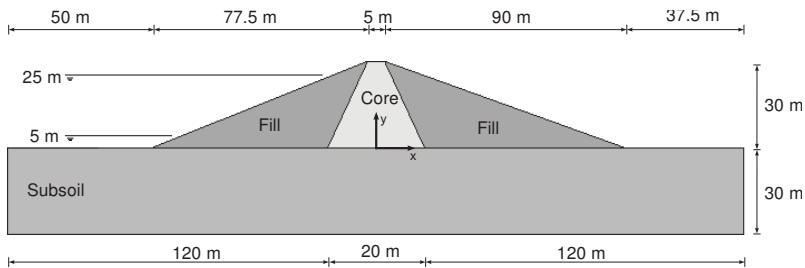


Figure 7.1 Geometry of the dam

Objectives:

- Performing fully coupled flow deformation analysis
- Defining time-dependent hydraulic conditions
- Using unsaturated flow parameters

7.1 GEOMETRY

- Start the Input program and select the *Start a new project* from the *Quick select* dialog box.
- In the *Project properties* window enter a proper title.
- Keep the default units and set the model dimensions to $x_{min} = -130$, $x_{max} = 130$, $y_{min} = 0$ and $y_{max} = 50$.

Assuming the dam is located in a wide valley, a representative length of 50 m is considered in the model in order to decrease the model size. The geometry of the model is shown in Figure 7.2.

7.1.1 DEFINITION OF SOIL STRATIGRAPHY

In order to define the underlying foundation soil, a borehole needs to be added and material properties must be assigned. A layer of 30 m overconsolidated silty sand is considered as sub-soil in the model.

 Create a borehole at (0.0 0.0). The *Modify soil layers* window pops up.

- Add a soil layer extending from ground surface ($z = 0$) to a depth of 30 m ($z = -30$).
- Set the *Head* in the borehole to -10 m. A horizontal water level will be automatically generated. This water level in combination with surface groundwater flow boundary conditions will be used in the *Fully coupled flow deformation* analyses.



Open the *Material sets* window.

- Create data sets under *Soil and interfaces* set type according to the information given in Table 7.1. Note that the *Interfaces* and *Initial* tabsheets are not relevant (no interfaces or *K0 procedure* used).
- Assign the *Subsoil* material data set to the soil layer in the borehole.


Table 7.1 Material properties of the dam and sub-soil

Parameter	Name	Core	Fill	Subsoil	Unit
General					
Material model	<i>Model</i>	Mohr Coulomb	Mohr Coulomb	Mohr Coulomb	-
Drainage type	<i>Type</i>	Undrained B	Drained	Drained	-
Soil unit weight above p.l.	γ_{unsat}	16.0	16.0	17.0	kN/m ³
Soil unit weight below p.l.	γ_{sat}	18.0	20.0	21.0	kN/m ³
Parameters					
Young's modulus	E'	$1.5 \cdot 10^3$	$2.0 \cdot 10^4$	$5.0 \cdot 10^4$	kN/m ²
Poisson's ratio	ν'	0.35	0.33	0.3	-
Cohesion	C'_{ref}	-	5.0	1.0	kN/m ²
Undrained shear strength	$S_{u,ref}$	5.0	-	-	kN/m ²
Friction angle	φ'	-	31	35.0	°
Dilatancy angle	ψ	-	1.0	5.0	°
Young's modulus inc.	E'_{inc}	300	-	-	kN/m ²
Reference level	Z_{ref}	30	-	-	m
Undrained shear strength inc.	$S_{u,inc}$	3.0	-	-	kN/m ²
Reference level	Z_{ref}	30	-	-	m
Groundwater					
Data set	<i>Model</i>	Hypres	Hypres	Hypres	-
Model	-	Van Genuchten	Van Genuchten	Van Genuchten	-
Soil	-	Subsoil	Subsoil	Subsoil	-
Soil coarseness	-	Very fine	Coarse	Coarse	-
Horizontal permeability	k_x	$1.0 \cdot 10^{-4}$	0.25	0.01	m/day
	k_y	$1.0 \cdot 10^{-4}$	0.25	0.01	m/day
Vertical permeability	k_z	$1.0 \cdot 10^{-4}$	0.25	0.01	m/day

7.1.2 DEFINITION OF THE EMBANKMENT

The embankment will be defined in the *Structures* mode.

- Define a surface by specifying points located at (-80 0 0), (92.5 0 0), (2.5 0 30) and (-2.5 0 30).
- Define a surface by specifying points located at (-10 0 0), (10 0 0), (2.5 0 30) and (-2.5 0 30).
- Multi-select the created surfaces and right-click on the drawing area. Select the *Intersect and recluster* option from the appearing menu.
- Multi-select the surfaces and extrude along (0 50.0 0) The volumes representing the dam are generated.

- Delete the surfaces used to create the soil volumes.
- Assign the corresponding material data sets to the soil volumes.
-  Time dependent conditions can be assigned to surface groundwater flow boundary conditions. Define surface groundwater flow boundary conditions (under the *Create hydraulic conditions* tool) according to the information in Table 7.2.

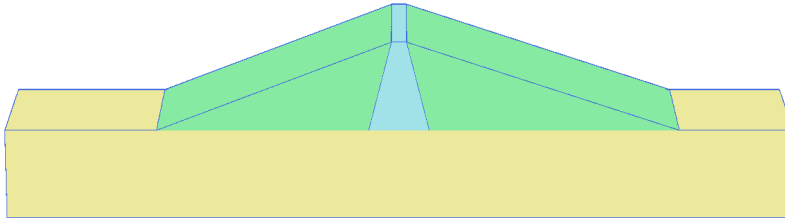



Figure 7.2 The geometry of the model

Table 7.2 Surface groundwater flow boundary conditions

Surface	Points
1	(-130 0 0), (-80 0 0), (-80 50 0), (-130 50 0)
2	(-80 0 0), (-2.5 0 30), (-2.5 50 30), (-80 50 0)
3	(-130 0 0), (-130 0 -30), (-130 50 -30), (-130 50 0)

7.2 MESH GENERATION

For the generation of the mesh it is advisable to set the *Element distribution* parameter to *Fine*. To modify the global coarseness:

-  Click the *Generate mesh* button in the side toolbar. The *Mesh options* window is displayed.
- Select the *Fine* option from the *Element distribution* drop-down (Figure 7.3).

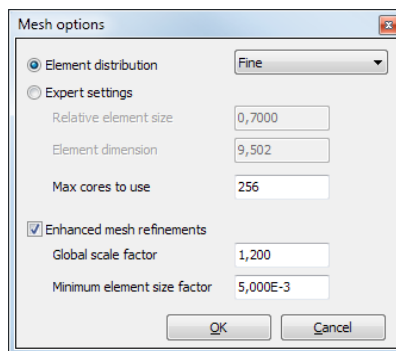



Figure 7.3 Modification of the *Global coarseness*

- Click *OK* to close the *Mesh options* window and to generate the mesh.
-  Click the *View mesh* button in the side toolbar to preview the mesh. The resulting mesh is displayed in Figure 7.4.

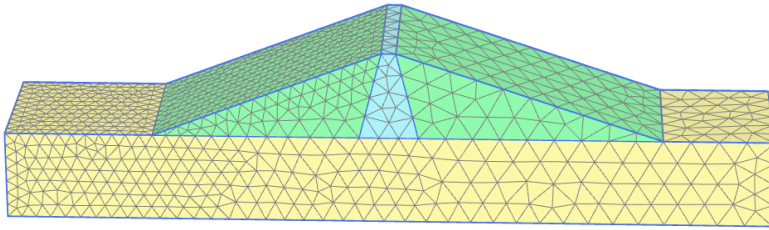


Figure 7.4 The resulting mesh

7.3 PERFORMING CALCULATIONS

In the calculation process the initial state (high reservoir), the rapid drawdown case, the slow drawdown case and finally the low water level case will be considered. A safety analysis will be performed for each of the cases.




- Proceed to the *Flow conditions* mode.
-  Create water levels corresponding to the full reservoir and the low water level cases according to the information given in Table 7.3.
- In the *Attributes library* of the *Model explorer* rename the created user water levels as 'High_Reservoir' and 'Low_Reservoir'.

Table 7.3 Water levels

Level	Points
High reservoir	(-130 0 25), (-10 0 25), (93 0 -10), (130 0 -10), (130 50 -10), (93 50 -10), (-10 50 25), (-130 50 25)
Low reservoir	(-130 0 5), (-10 0 5), (93 0 -10), (130 0 -10), (130 50 -10), (93 50 -10), (-10 50 5), (-130 50 5)

Hint: No modifications, such as *Time dependency* is possible for *Borehole water levels* and non-horizontal *User water levels*.

Initial phase - High reservoir

- Proceed to the *Staged construction* mode.
- Double-click the initial phase in the *Phases explorer*.
- In the *General* subtree of the *Phases* window rename the phase as 'High reservoir'.
-  Select the *Gravity loading* option as *Calculation type*. Note that *Staged construction* is the only option available for *Loading type*.
-  Select the *Steady state groundwater flow* option as pore pressure calculation type.
- Note that the options *Ignore undr. behaviour (A,B)* and *Ignore suction* are by default selected in the *Deformation control parameters* subtree. The default values will be used for the parameters in the *Numerical control parameters* and *Flow control parameters* subtrees.
- Click *OK* to close the *Phases* window.
- In the *Staged construction* mode activate the soil clusters representing the embankment.

- In the *Model explorer* expand the *Model conditions* subtree.
- In the *GroundwaterFlow* subtree set *BoundaryYMin*, *BoundaryYMax* and *BoundaryZMin* to *Closed*. The remaining boundaries should be *Open* (Figure 7.5).
- In the *Water* subtree select the high reservoir water level (*High_Reservoir*) as *GlobalWaterLevel*.

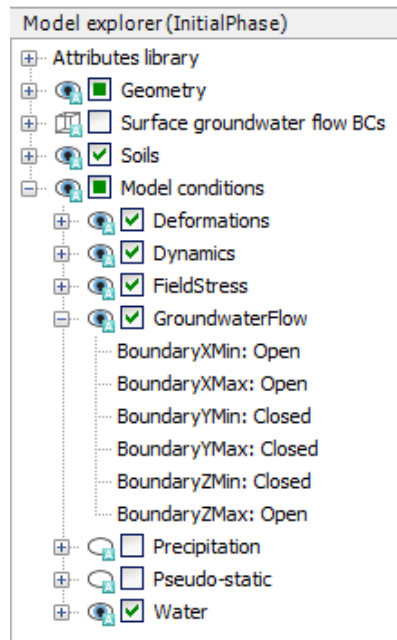


Figure 7.5 Boundary conditions for groundwater flow

Phase 1 - Rapid drawdown

In the rapid drawdown phase the water level in the reservoir will be lowered from $z = 25$ m to $z = 5$ m in a period of 5 days. To define the function describing the fluctuation of the water level:

- Add a new calculation phase
 - In the *Phases explorer* double-click the newly added phase. The *Phases* window is displayed.
 - In the *General* subtree specify the name of the phase (e.g. Rapid drawdown).
- Set the *Calculation type* to *Fully coupled flow-deformation*.
 - Set the *Time interval* to 5 days.
 - The *Reset displacements to zero* option is automatically selected in the *Deformation control parameters* subtree.
 - Click *OK* to close the *Phases* window.
 - Expand the *Attributes library* in the *Model explorer*.
 - Right-click on *Flow functions* and select the *Edit* option in the appearing menu. The

Flow functions window is displayed.



In the *Head functions* tabsheet add a new function by clicking the corresponding button. The new function is highlighted in the list and options to define the function are displayed.

- Specify a proper name to the function for the rapid drawdown (e.g. Rapid).
- Select the *Linear* option from the *Signal* drop-down menu.
- Assign a value of -20 m to Δ Head, representing the amount of the head decrease.
- Specify a time interval of 5 days. A graph is displayed showing the defined function (Figure 7.6).
- Click *OK* to close the *Flow functions* window.

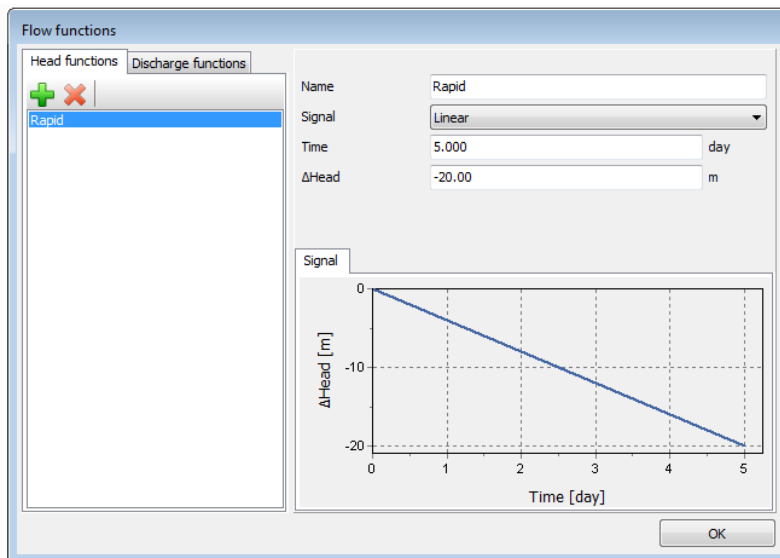


Figure 7.6 The flow function for the rapid drawdown case


- Activate all the surface groundwater flow boundary conditions.
- Multi-select the surface groundwater flow BCs in the drawing area.
- In the *Selection explorer* select the *Head* option as behaviour. The distribution of the head is *Uniform*. Assign a value of 25 m to h_{ref} .
- Set the time dependency to *Time dependent* and select the *Rapid* option as *Head function*. Information related to the head function is displayed in the *Object explorers* as well.
- In the *Water* subtree in the *Model explorer* select the *BoreholeWaterLevel_1* option as *GlobalWaterLevel*.

Phase 2 - Slow drawdown

In the slow drawdown phase the water level in the reservoir will be lowered from $z = 25$ m to $z = 5$ m in a period of 50 days. To define the function describing the fluctuation of the

water level:

- Select the initial phase (High reservoir) in the *Phases explorer*.

 Add a new calculation phase

- In the *Phases explorer* double-click the newly added phase. The *Phases* window is displayed.
- In the *General* subtree specify the name of the phase (e.g. Slow drawdown).

 Set the *Calculation type* to *Fully coupled flow-deformation*.

- Set the *Time interval* option to 50 days.
- The *Reset displacements to zero* option is automatically selected in the *Deformation control parameters* subtree.
- Click *OK* to close the *Phases* window.
- Create a new flow function following the steps previously described.
- Specify a proper name to the function for the slow drawdown (e.g. Slow).
- Select the *Linear* option from the *Signal* drop-down menu.
- Assign a value of -20 m to Δ Head, representing the amount of the head decrease.
- Specify a time interval of 50 days. The window displaying the defined function is shown in Figure 7.7.

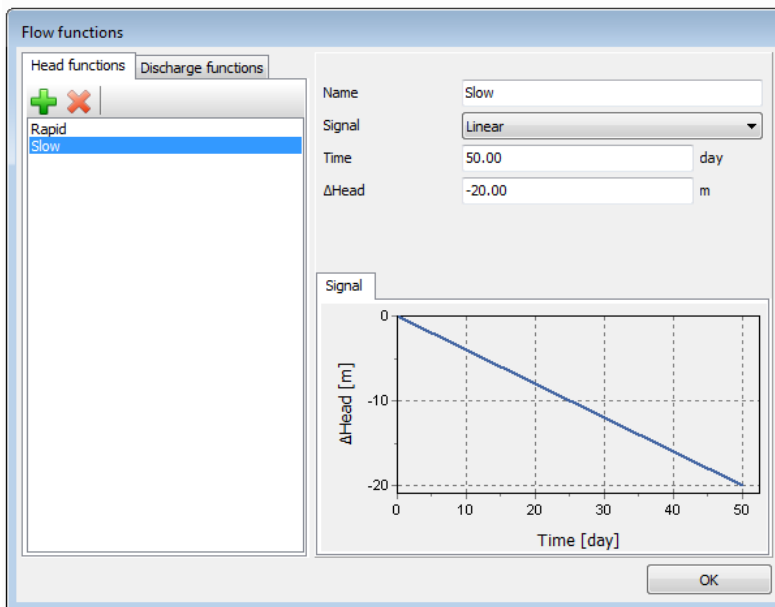


Figure 7.7 The flow function for the slow drawdown case




- Activate all the surface groundwater flow boundary conditions and multi-select them in the drawing area.
- In the *Selection explorer* select the *Head* option as behaviour. The distribution of

the head is *Uniform*. Assign a value of 25 m to h_{ref} .

- Set the time dependency to *Time dependent* and select the *Slow* option as *Head function*.
- In the *Water* subtree in the *Model explorer* select the *BoreholeWaterLevel_1* option as *GlobalWaterLevel*.






Phase 3 - Low level

This phase considers the steady-state situation of a low reservoir level.

- Select the initial phase (High reservoir) in the *Phases explorer*.
-  Add a new calculation phase.
- In the *Phases explorer* double-click the newly added phase. The *Phases* window is displayed.
- In the *General* subtree specify the name of the phase (ex: Low level).
-  The default calculation type (*Plastic*) is valid for this phase.
-  The default *Pore pressure calculation type* (*Steady state groundwater flow*) is valid for this phase.
- In the *Deformation control* subtree, select *Ignore und. behaviour (A,B)* and make sure that the *Reset displacements to zero* is selected as well.
- Click *OK* to close the *Phases* window.
- The surface groundwater flow BCs should be deactivated in the *Model explorer*.
- In the *Water* subtree select the low reservoir water level (*Low_Reservoir*) as *GlobalWaterLevel*.

Phase 4 to 7 - Safety analysis

In Phases 4 to 7, stability calculations are defined for the previous phases respectively.

- Select *Phase_1* in the *Phases explorer*.
-  Add a new calculation phase and proceed to the *Phases* window.
- In the *General* subtree specify the name of the phase (ex: Rapid drawdown - Safety).
-  Set *Calculation type* to *Safety*. The *Incremental multipliers* option is valid as *Loading type*.
- Select the *Reset displacements to zero* option in the *Deformation control* subtree.
- In the *Numerical control parameters* subtree set the *Max steps* parameter to 50 for Phase 4.
- Follow the same procedure for Phases 5 to 7. The final view of the *Phases explorer* is given in Figure 7.8.
-  In the *Staged construction* mode select a node located at the crest (-2.5 25.0 30.0).
-  Start the calculation process. Ignore the calculation warnings.
-  Save the project when the calculation is finished.

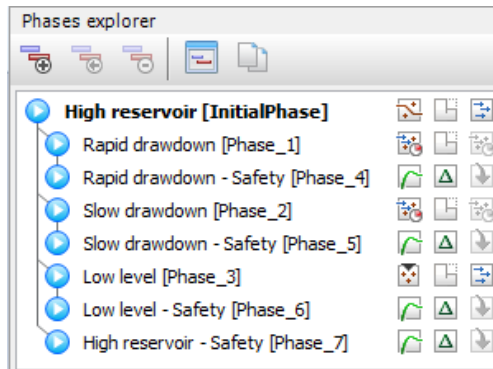


Figure 7.8 The final view of the *Phases explorer*

7.4 VIEWING THE RESULTS



After the calculation is finished click the *View the calculation results* button. The *Output* window now shows the deformed mesh for the selected phase.

- In the *Stresses* menu point the *Pore pressures* option and select the p_{water} option from the appearing menu.



Define a vertical cross section passing through (-130 15) and (130 15)

The results of the four groundwater flow calculations in terms of pore pressure distribution are shown in Figures 7.9 to 7.12. Four different situations were considered:

Hint: Note that by default the legend is locked in cross section plots, meaning that the same layer distribution will be used if the cross section is relocated in the model or if the results are displayed for other phases.

The legend can be unlocked by clicking on the *Lock* icon under the legend. A 'free' legend is indicated by the *Open lock* icon.

- The situation with a high (standard) reservoir level (Figure 7.9).
- The situation after rapid drawdown of the reservoir level (Figure 7.10).
- The situation after slow drawdown of the reservoir level (Figure 7.11).
- The situation with a low reservoir level (Figure 7.12).

When the change of pore pressure is taken into account in a deformation analysis, some additional deformation of the dam will occur. These deformations and the effective stress distribution can be viewed on the basis of the results of phases 1 to 4.

For the phases 1 and 2 change the legend settings to *Manual* and set the values as follows:

- Minimum value: -480
- Maximum value: 200
- Number of intervals: 18

In this tutorial attention is focused on the variation of the safety factor of the dam for the different situations. Therefore, the development of ΣMsf is plotted for the phases 4 to 7 as a function of the displacement of the dam crest point (see Figure 7.13).

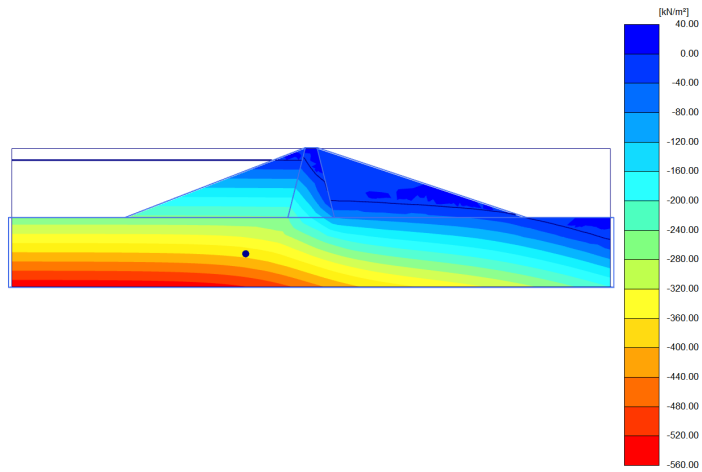


Figure 7.9 Pore water pressure distribution for high reservoir level (Initial phase)

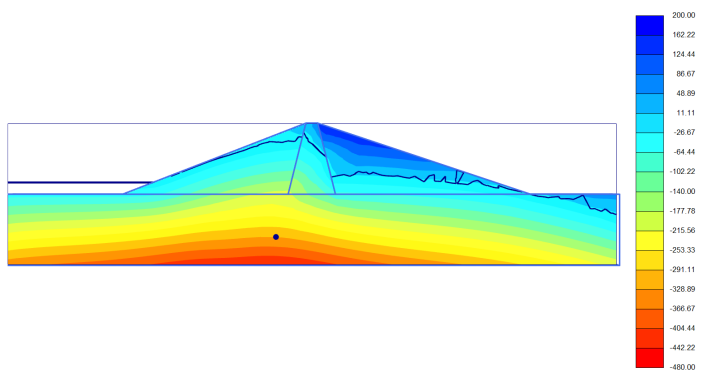


Figure 7.10 Pore water pressure distribution after rapid drawdown (Phase_1)

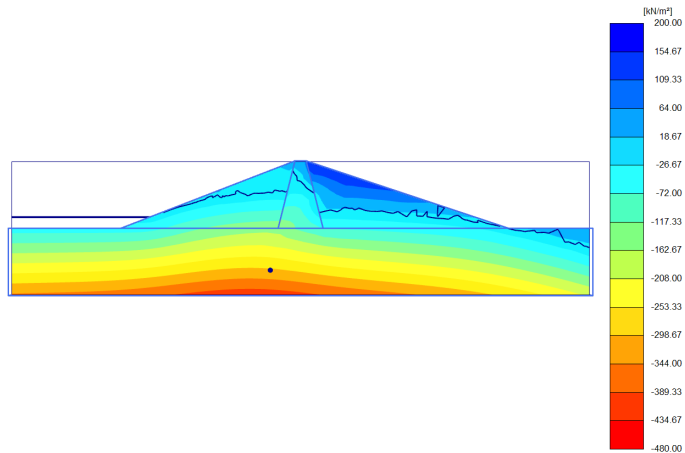


Figure 7.11 Pore water pressure distribution after slower drawdown (Phase_2)

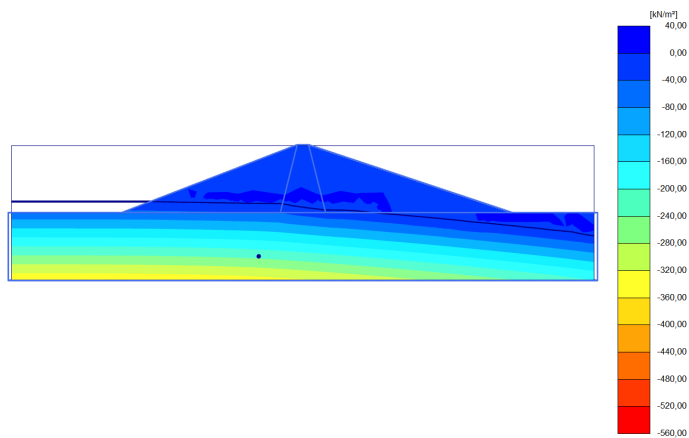


Figure 7.12 Pore water pressure distribution for low reservoir level (Phase_3)

Rapid drawdown of a reservoir level can reduce the stability of a dam significantly. Fully coupled flow-deformation and stability analysis can be performed with PLAXIS 3D to effectively analyse such situations.

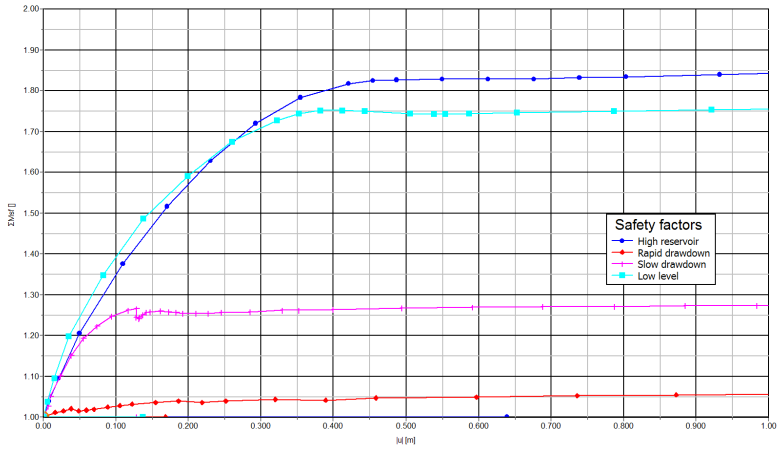


Figure 7.13 Safety factors for different situations