

gINT for ArcGIS Toolbar

gINT V8i User Manual

DAA039670-1/0001

The information in this publication is subject to change without notice and does not represent a commitment on the part of Bentley. The software described in this document is furnished under a license agreement or nondisclosure agreement. The software must be used or copied only in accordance with the terms of the agreement.

COPYRIGHT NOTICE

Copyright (c) 2012 Bentley Systems, Incorporated. All rights reserved.

Including software, file formats, and audiovisual displays; may only be used pursuant to applicable software license agreement; contains confidential and proprietary information of Bentley Systems, Incorporated and/or third parties which is protected by copyright and trade secret law and may not be provided or otherwise made available without proper authorization.

RESTRICTED RIGHTS LEGENDS

If this software is acquired for or on behalf of the United States of America, its agencies and/or instrumentalities ("U.S. Government"), it is provided with restricted rights. This software and accompanying documentation are "commercial computer software" and "commercial computer software documentation," respectively, pursuant to 48 C.F.R. 12.212 and 227.7202, and "restricted computer software" pursuant to 48 C.F.R. 52.227-19(a), as applicable. Use, modification, reproduction, release, performance, display or disclosure of this software and accompanying documentation by the U.S. Government are subject to restrictions as set forth in this Agreement and pursuant to 48 C.F.R. 12.212, 52.227-19, 227.7202, and 1852.227-86, as applicable. Contractor/Manufacturer is Bentley Systems, Incorporated, 685 Stockton Drive, Exton, PA 19341-0678.

Unpublished - rights reserved under the Copyright Laws of the United States and International treaties."

Bentley Systems Inc.
Corporate Headquarters
685 Stockton Drive
Exton, PA 19341, United States

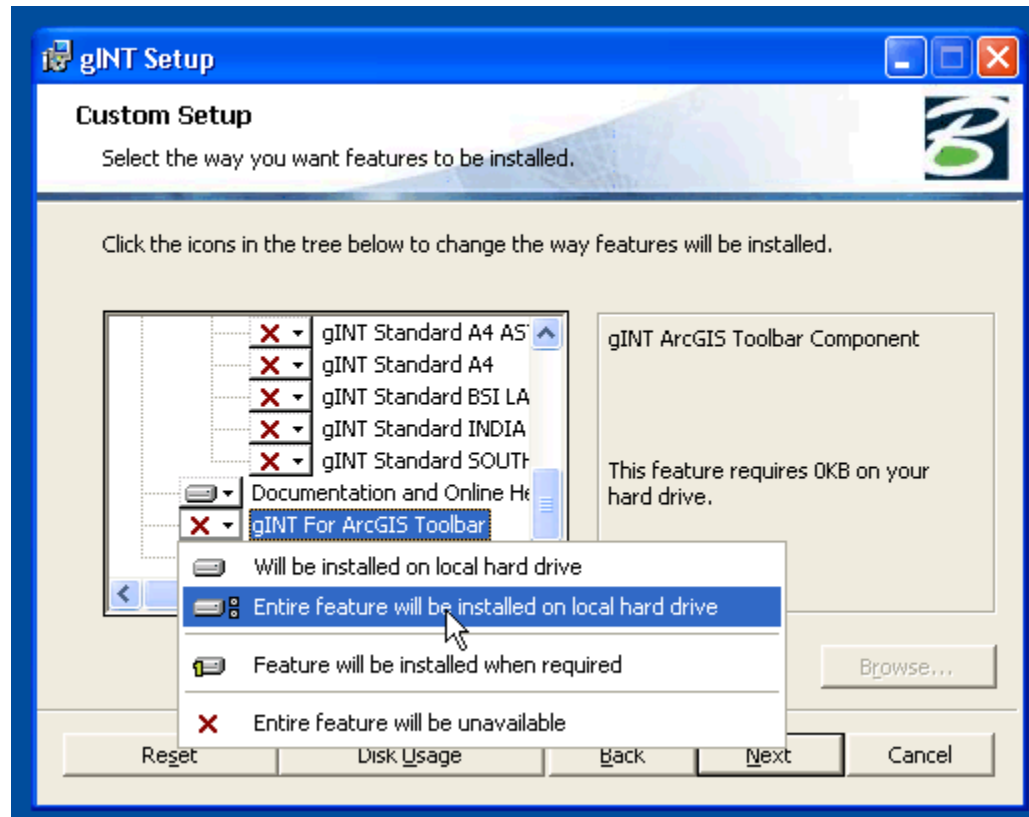
Web Site: <http://www.bentley.com/en-US/Products/gINT/>
Sales and General Support: <http://www.bentley.com/en-US/Corporate/Contact+Us/>

Contents

Installing	3
Configuring	3
Usage.....	4

Installing

The gINT ArcGIS Toolbar is an optional feature that can be included in the installation either when first installing, or by running the installation again and selecting the Change option.



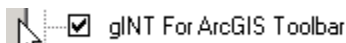
The feature is named gINT For ArcGIS Toolbar and is toward the bottom of the install able features list.

Configuring

Once the feature is installed on the machine you must enable the extension and the toolbar in ArcMap, to do this follow these steps:

Open ArcMap and start a blank map. On Windows 7 you must right click on your ArcMap Shortcut and select the 'Run as Administrator' option for the following steps to succeed.

1. Navigate to the Tools menu and choose Extensions...
2. Check the box to the left of the gINT For ArcGIS Toolbar extension



3. Click Close to dismiss the Extensions dialog box
4. Navigate to the Tools menu and choose Customize...
5. Check the box to the left of the gINT Toolbar For ArcGIS 9 toolbar


 gINT toolbar for ArcGIS 9

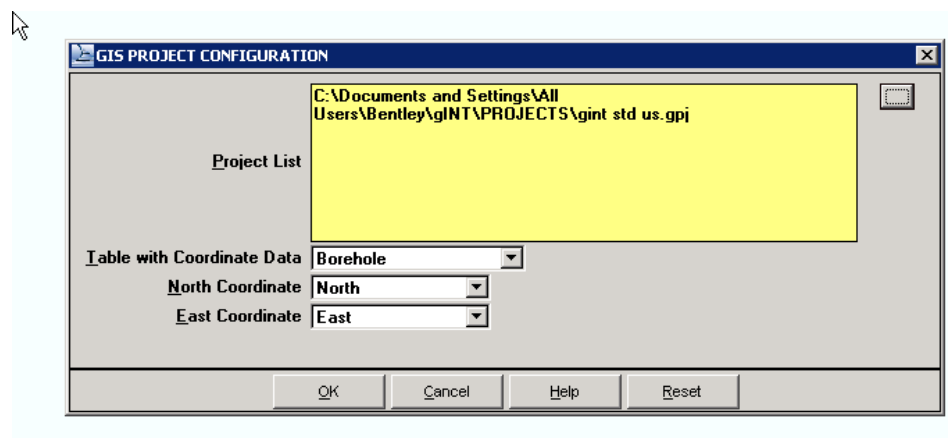
6. The toolbar should appear in the background

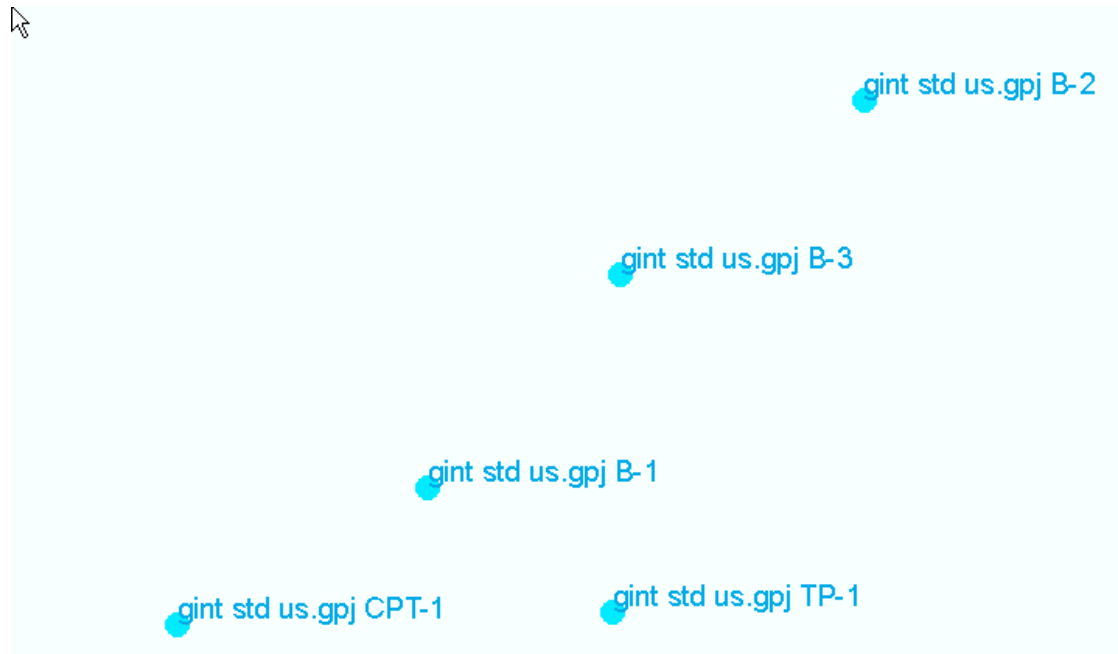
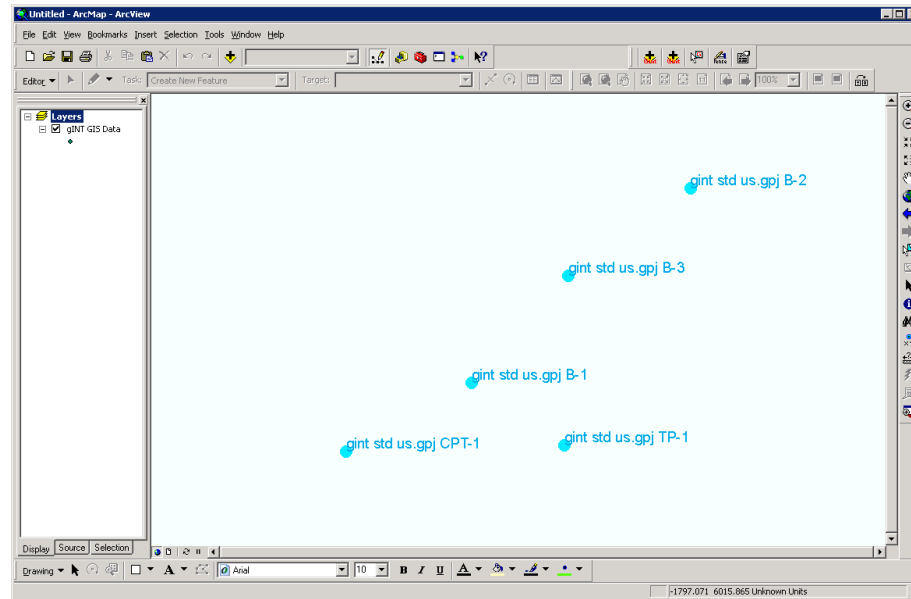



- 7.
8. Click Close to dismiss the Customize dialog box
9. Drag the toolbar to a docking location where you would like it positioned.


Usage

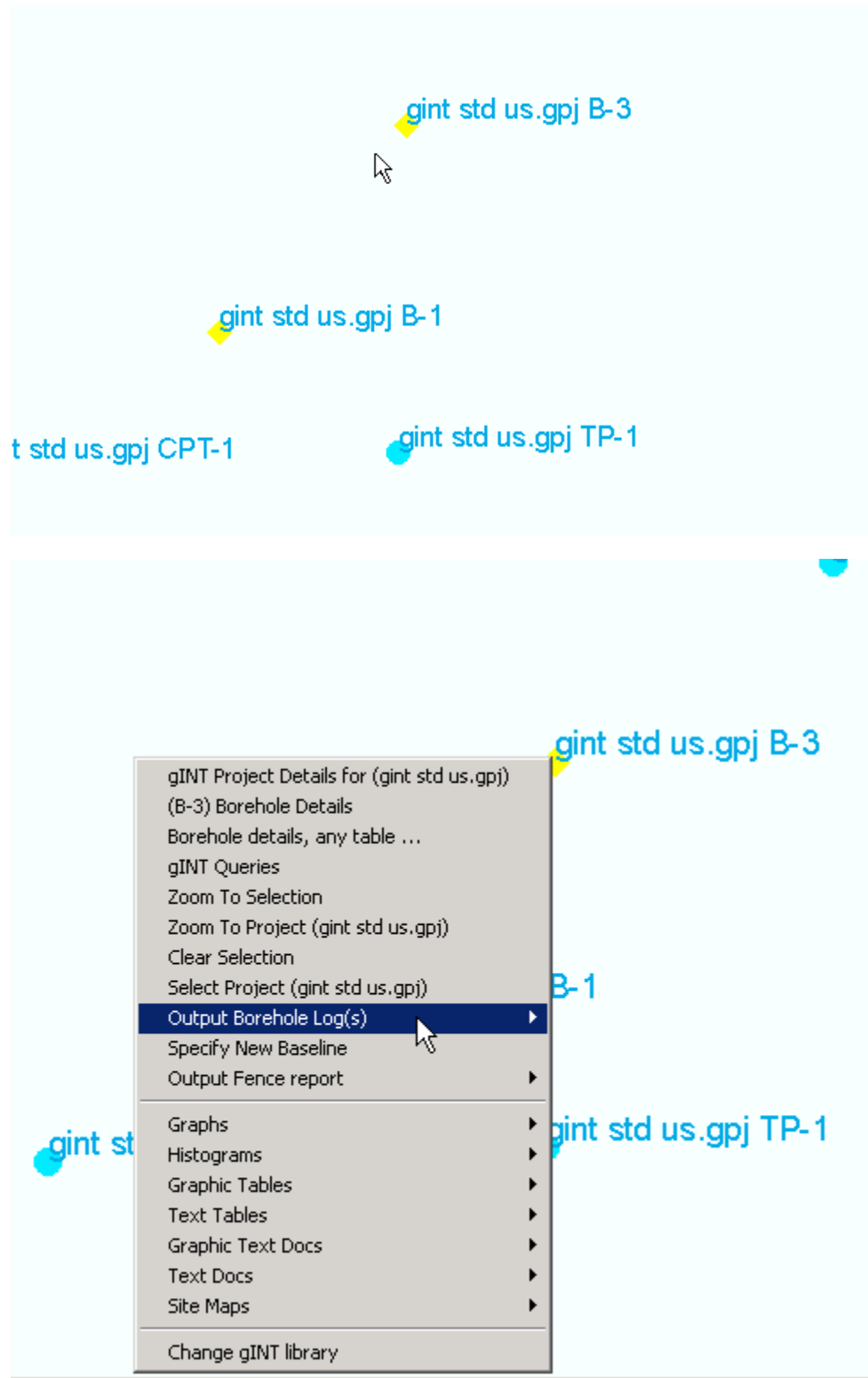
The ArcGIS Toolbar has five tools on it. The first two tools are used to import gINT borehole data into ArcMap . The leftmost tool is for importing gINT project data from gpj project files.





The next tool over is for importing gINT enterprise data from the gINT enterprise database . The enterprise import is only functional for users who have gINT Pro Plus installed.

The next tool on the toolbar is the gINT Feature Selection tool . This tool allows you to interact with borehole data after importing the borehole data to ArcMap, there are several features of this tool.



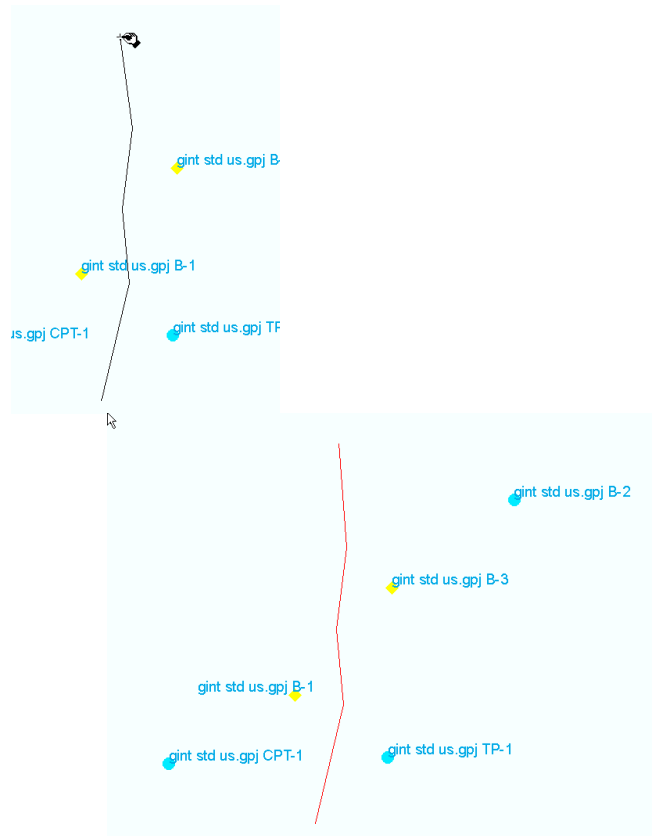
It can be used to toggle rubber band or lasso style selections of boreholes, it can be used to toggle selection of single boreholes, it can be used to right click on a borehole (or selection of boreholes) and view data or run various reports from the context menu and it can be

used to right-click on fence lines to perform various operations on those fence lines.

To select borehole IDs - Hold Shift key + Click on borehole IDs.

To unselect borehole IDs - Hold Alt key + Click on borehole IDs.

The next tool on the bar is the gINT Fence Line drawing tool .



This tool is used to create fence lines in ArcMap, to use the tool, click on it then begin drawing your fence line in the ArcMap display window.

The final tool on the toolbar is a property and information tool that you can use to change your currently selected gINT library file, or view license and product information.



