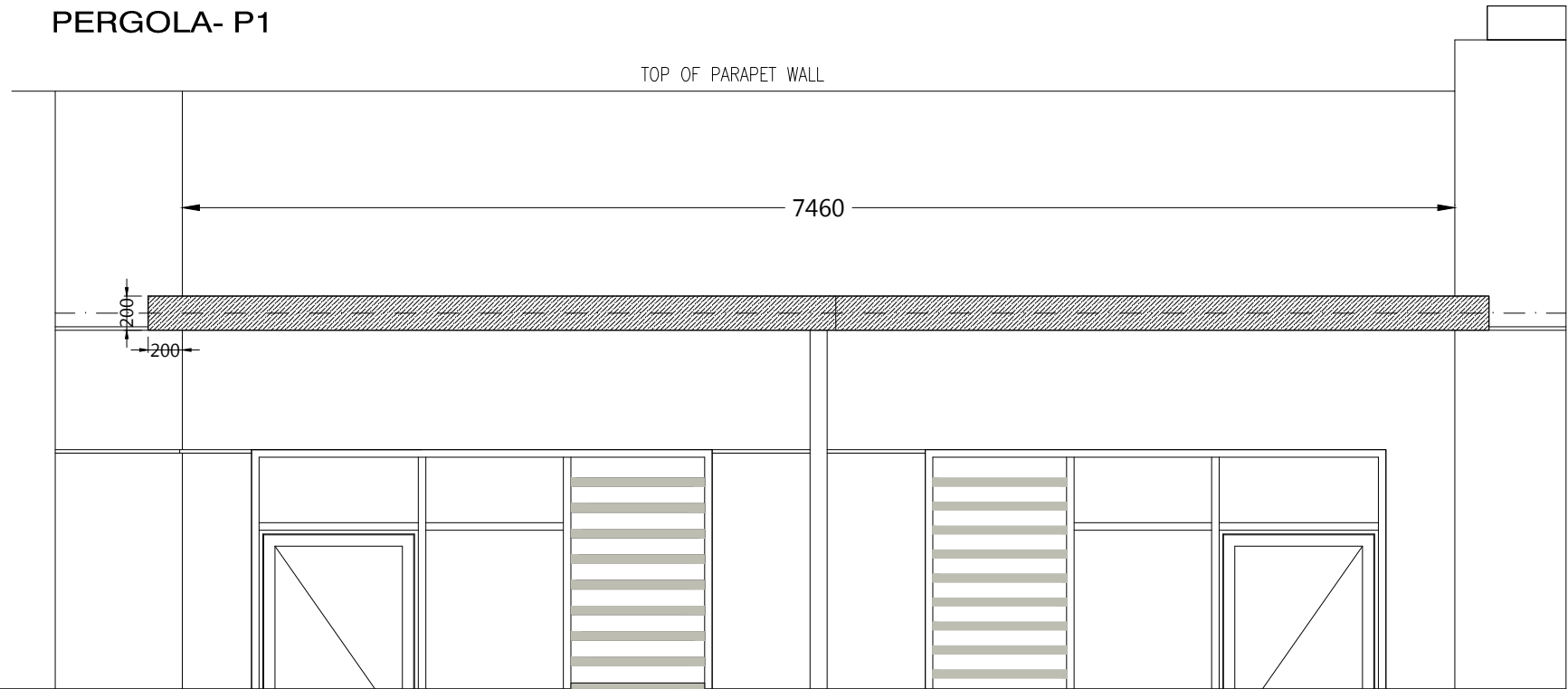
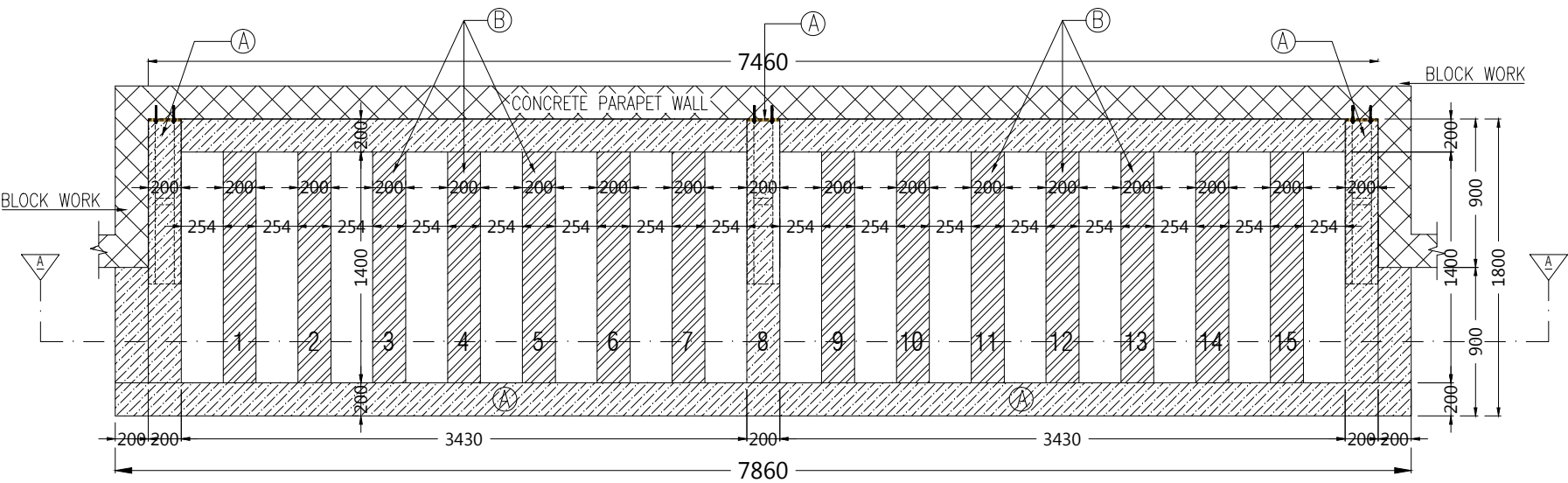


ALUMINIUM PERGOLA @ROOF ELEVATION -3 (BUILD-H,I,J,K,L,M,N,O)
PERGOLA- P1



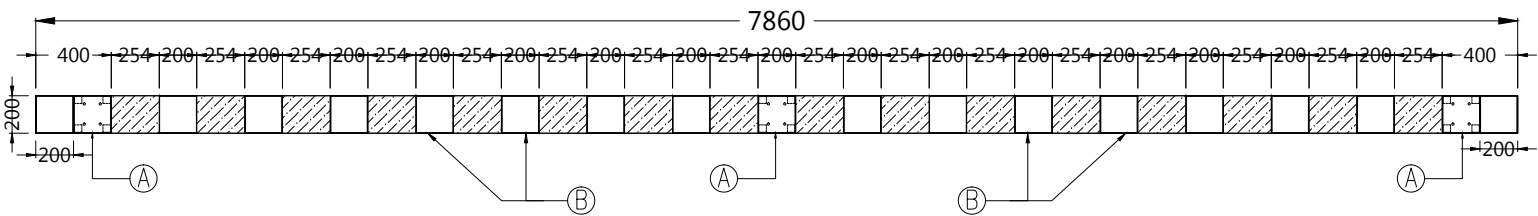
Outside Elevation of Pergola



Plan of Alum Roof Pergola P1

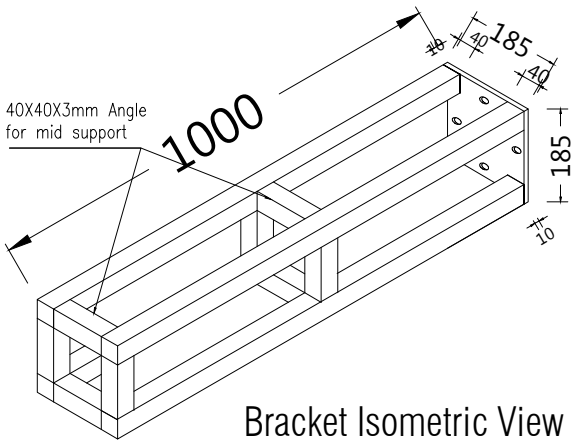
Location: Roof floor ELEV-3 (BUILD-H,I,J,K,L,M,N,O)
Quantity 01 X 08 = 8 Nos.
Colour: 9007- Metallic

- Ⓐ 200 X 200 ALUM. POWDER COATED TUBE RUNNING AROUND AND FIXED TO THE MS STEEL BRACKET (40X40X3MM MS TUBE 4Nos.;WELDED ON THE MS BASEPLATE. AND ITS FIXED TO THE ROOF SLAB BY M10X120 ANCHOR BOLTS 4.nos)
- Ⓑ 200X200MM ALUM. POWDER COATED TUBE WELDED PERPENDICULARLY TO THE Ⓐ

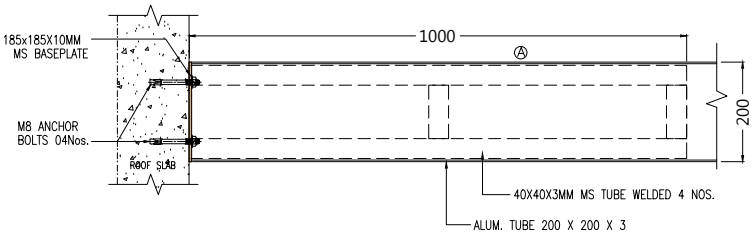


Section A-A

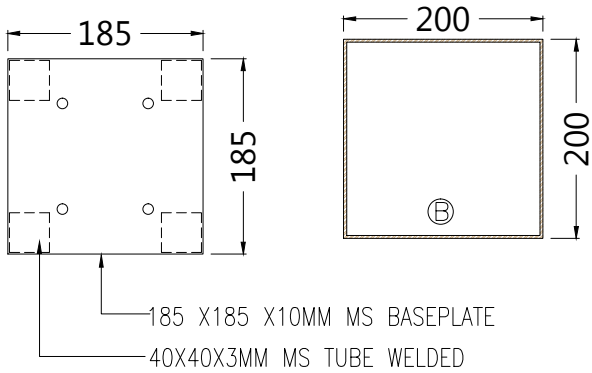
T.R.C PHASE - 3



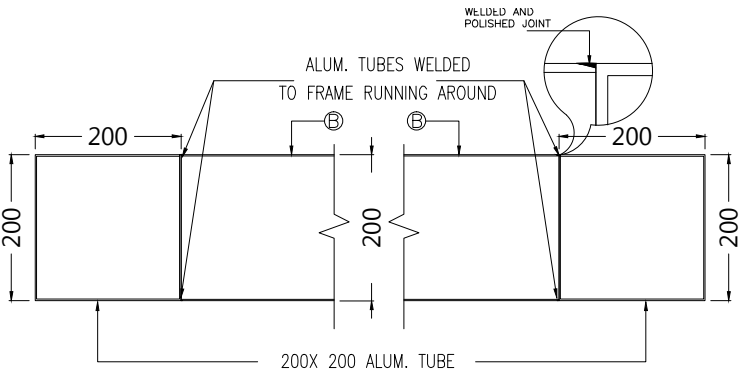
Bracket Isometric View



Cross Section Bracket fixing Details



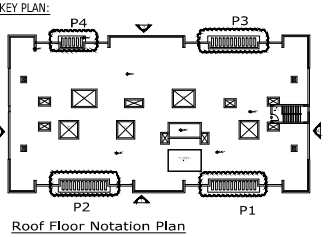
MS Baseplate Details



Alum. TUBE Ⓑ fixing Details

- NOTES
- 1 THIS DRAWING IS A COPY RIGHT.
 - 2 DO NOT SCALE THIS DRAWING.
 - 3 READ THIS DRAWING IN CONJUNCTION WITH RELEVANT ARCHITECTURAL, STRUCTURAL AND SERVICE DRAWINGS, SPECIFICATIONS DETAILS AND CONTRACT DOCUMENTS.
 - 4 PREPARE DETAILED WORKING DRAWINGS FOR APPROVAL IF REQUIRED BY THE CONSULTANT.
 - 5 VERIFY ALL DIMENSIONS PRIOR TO EXECUTION.

ALUMINUM
GULF EXTRUSIONS THERMAL BREAK SYSTEM, CURTAIN WALL
FINISH : 9007 - METTALIC



Roof Floor Notation Plan

CONSULTANT:

OTI
الشركة العربية التركية العالمية
arab & turk international

Tel: 06 5548584 | Fax: 06 5548583 | Email: info@ati-cae.com | www.ati-cae.com

OWNER : EII Educational Investments International

PROJECT : G+2 Teachers Residential Complex PHASE-02

MAIN CONTRACTOR:

AL REHAB
العربي
AL ARABI
building contracting
Teli: 067444572 Fax: 067444573
www.alrehabcontracting.com

Sub CONTRACTOR

AL REHAB
ALUMINUM & GLASS WORKS, LLC

CITY: SHARJAH AREA: INSTITUTION LAND PLOT: 3712/2 PRO 3207 GOV

TITLE : Alum. Pergola Details @ Roof Sheet 01 of 04

PROJECT NO: DRAWING NO: ALR/SD-ARCH/801 REVISION NO:

SIZE: A3 SCALE: N.T.S DATE: 07/05/2020

DRAWN: CHECKED: APPROVED: