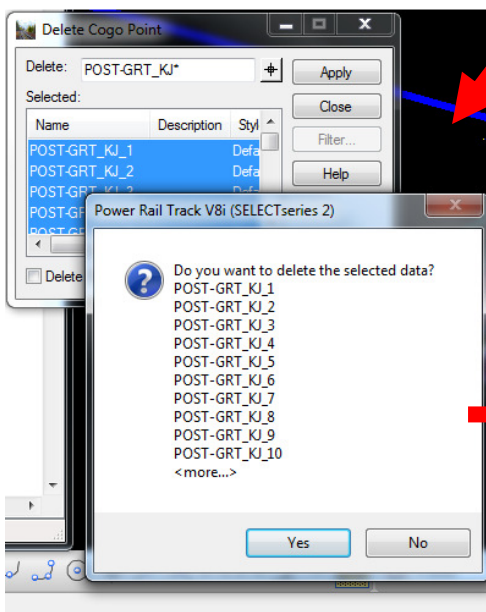
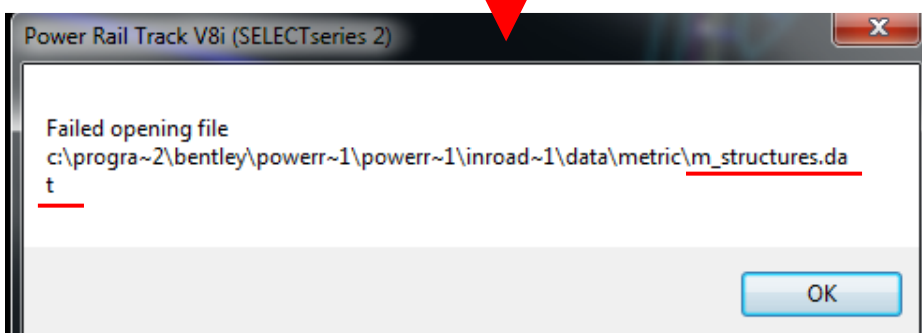
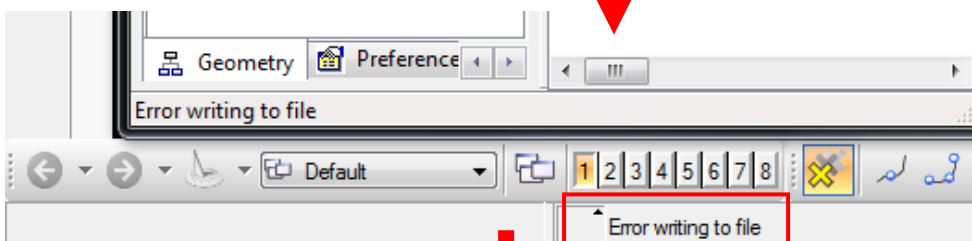
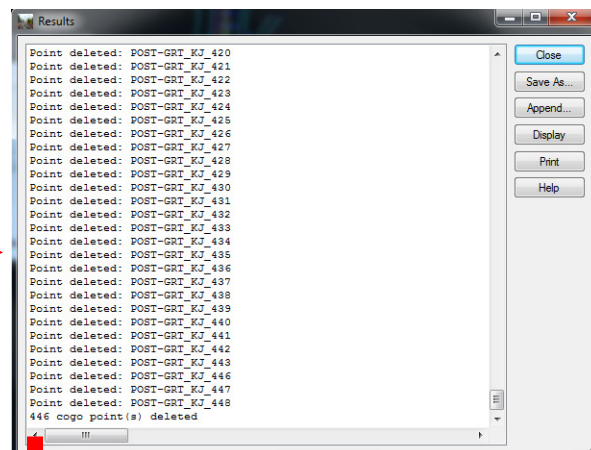


1. I selected and delete multiple COGO points with this tool. I wrote „common part of point name“ with a * to select all COGO points that I want to delete.



2. Then I deleted all COGO points.



3. And finally when I want to save this action to geometry file pops up an error message. And then again when I exit PRT pops up a message about this file. I didn't touch this file or any similar so I don't know why this happens suddenly.

Any ideas?