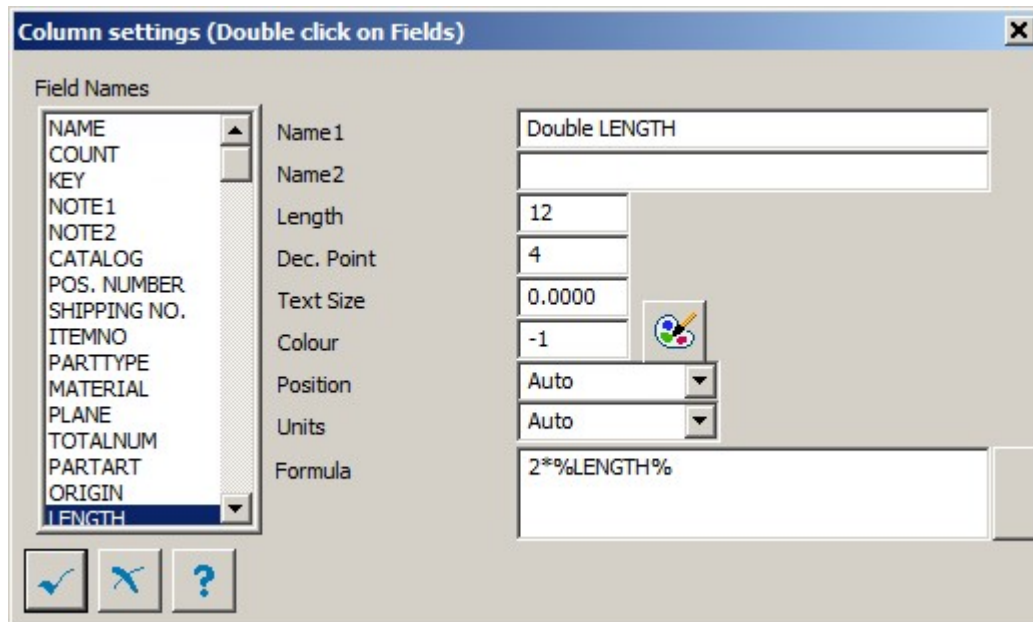



Column Settings dialog

Each column of the list styles can be adapted and formatted in many different ways.

After an entry to be modified or created has been selected in the display list of list format dialog, the following dialog opens:



Setting	Description
Field Names	Select the desired field from the data fields.
Name1	The name of the column header resp. the first name if an entry has been indicated in input field 'Name2' as well. Two rows are available altogether.
Name2	The second name of column header.
Length	Here, you enter the desired column width in text signs. The exact column width depends on the selected text style.
Dec. Point	The number of desired positions after the decimal point.
Text Size	Enter the text size of the column. If you have entered the value 0, the general text size of the list style is used.
Colour 	Enter the color of the column text. If you have entered the value -1, the text color of the list style is used.
Position	

Setting	Description
	Enter the alignment of the column: Left, Centre, Right or Automatic. If 'Automatic' has been selected, all texts are aligned to the left and all digits are aligned to the right.
Units	Enter the unit format Metric, Imperial or Automatic. If 'Automatic' has been selected, the default units of the drawing are used.
Formula	<p>(Drawing partlist only) Type a formula here and the calculation result is used in the partlist. Use standard mathematical operators (+, -, *, /) to build your equation.</p> <p>The following list of fields are available as variables in your equations:</p> <p> %AREAClass% %BOLTDiameter% %BOLTGRIPLength% %CLEARANCE% %COUNT% %CUTAREA% %DISPLAYCLASS% %FAMILYCLASS% %FICTIVLength% %FLANGETHICK% %FLANGEWIDTH% %FORMEND% %FORMSTART% %GROUPCOUNT% %HEIGHT% %INSERTX% %INSERTY% %LENADDITION% %LENGTH% %MATERIALINDEX% %NUMBODY% %NUMCUTS% %NUMFACETS% %NUMHOLES% %NUMOUTLETS% %NUMPCUTS% %ORIGIN% %PAINTAREA% %PARTART% %PHIEND% %PHIFLANSCHEND% %PHIFLANSCHSTART% %PHISTART% %PHISTEGEND% %PHISTEGSTART% %PROCESSSTATUS% %SHAPEDEPTH% </p>

Setting	Description
	<p> %TOTALCOUNT% %TOTALCUT% %TOTALLENGTH% %TOTALPAINT% %TOTALWEIGHT% %WEBTHICK% %WEIGHT% %WIDE% </p> <p>Arithmetic functions that take one argument:</p> <p> abs acos asin atan radians cos sin cosh exp fak angle log log10 sinh tanh sqrt ln ceil floor random year month day hour minute second </p> <p>Functions that take two arguments:</p> <p> roundto arctan2 roundup fmod hypot eq </p>

Function Examples

Two times the length variable: `2*%LENGTH%`

Parent topic: [Layout tab](#)