

Figure-1

SURFACE INCIDENCE

1 2 3 4 SURFACE 1

3 5 6 4 SURFACE 2

Comments :

The local origin location and local axis orientation of SURFACE 1 is correctly reflected in the above Figure-1, being shown at starting Node 1 & local X-axis along Node 1 to Node 2 as per its incidence command shown above. However for the SURFACE 2 local origin location is correct at Node 3 but the local axis orientation is not showing correctly in the figure. As per the incidence command local X-axis should have been shown pointing from Node 3 to Node 5, but it is pointing from Node 4 to Node 3 which seems to be an error.

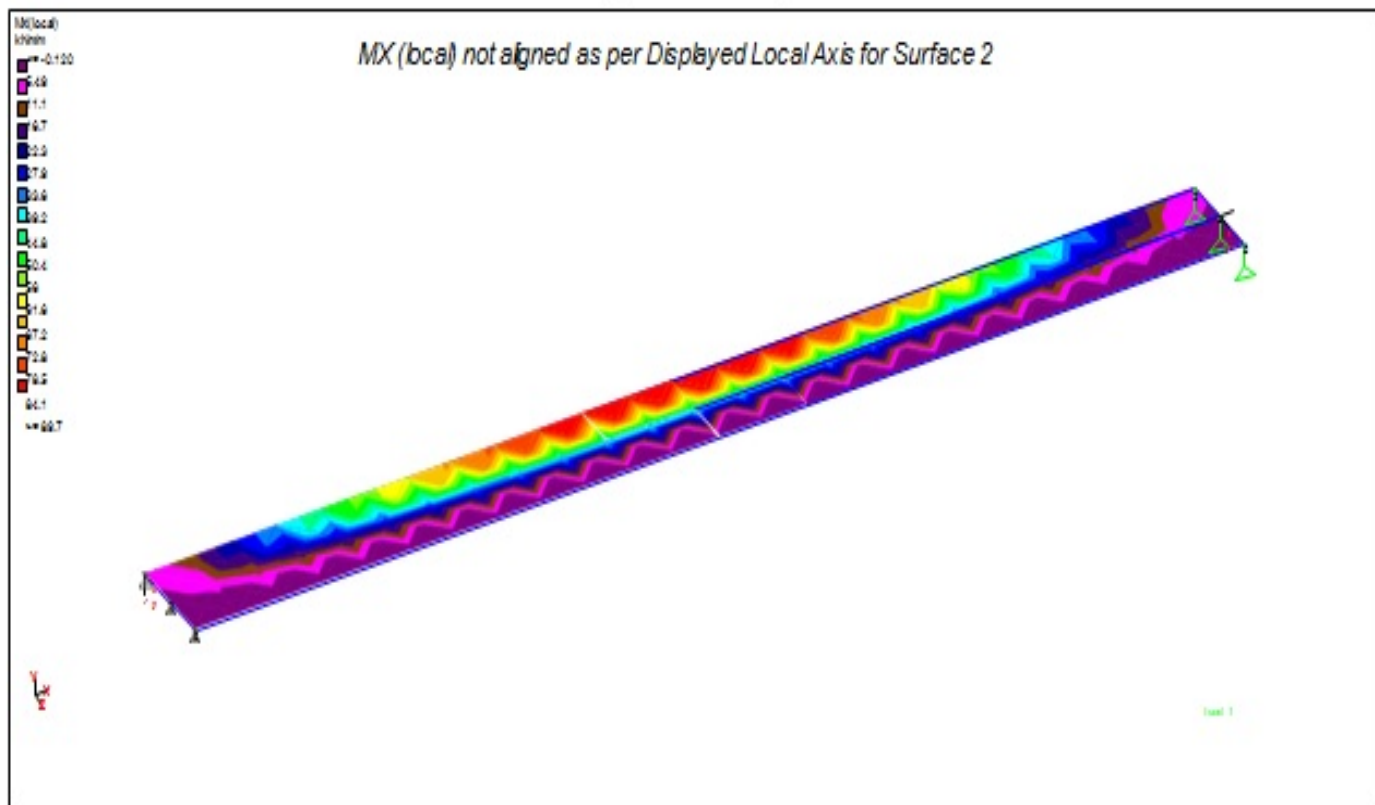


Figure-2

Comments :

The MX (local) contours for SURFACE 1 is correctly aligned as per local axis orientation of Figure-1, however for SURFACE 2 the MX (local) is not oriented as per the local axis shown in Figure-1, but is matching with the orientation as should have been in accordance with the incidence command above.