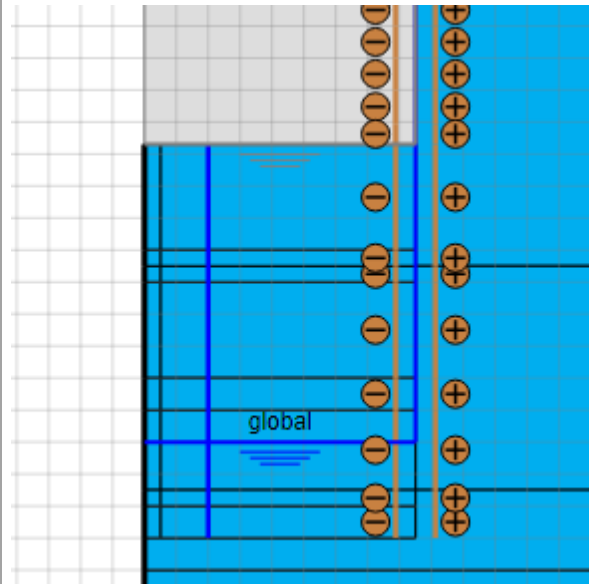
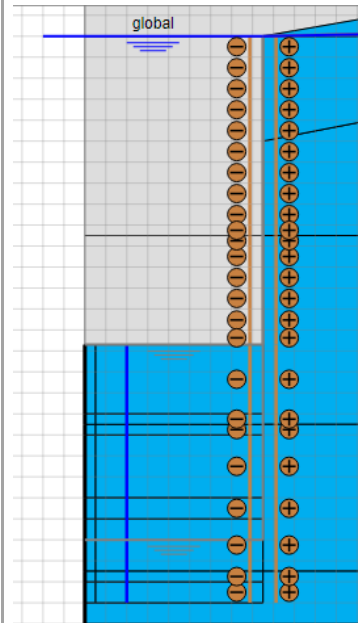


Case 1



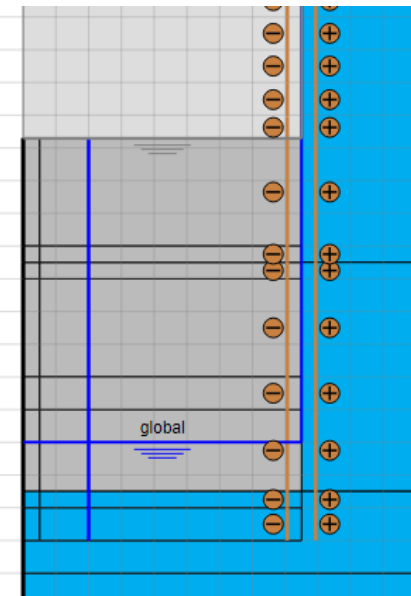
Q = 10

Case 2

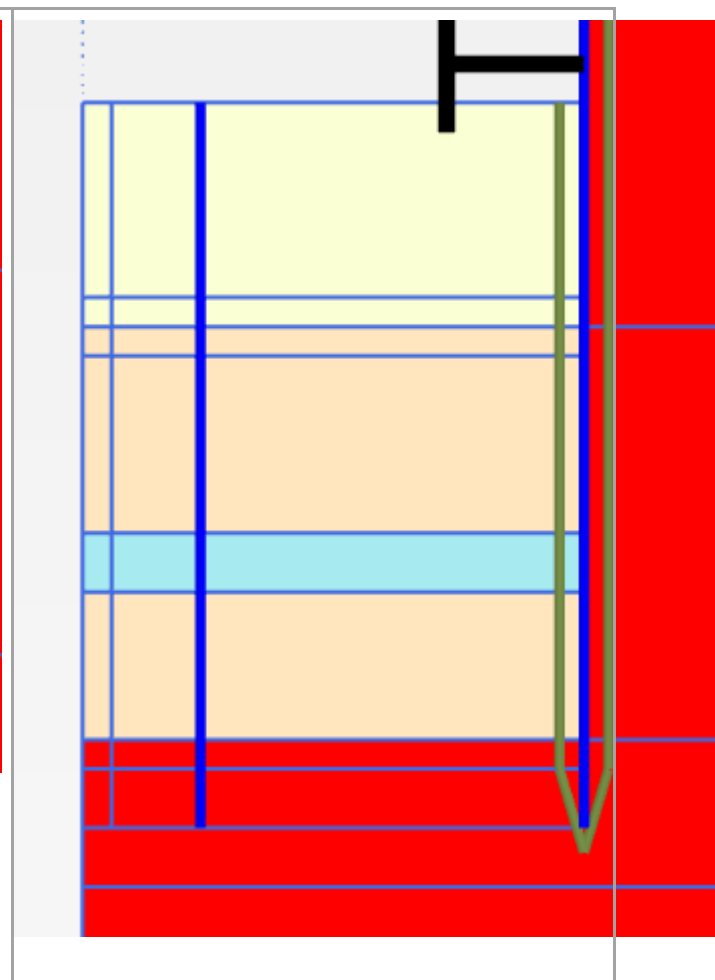
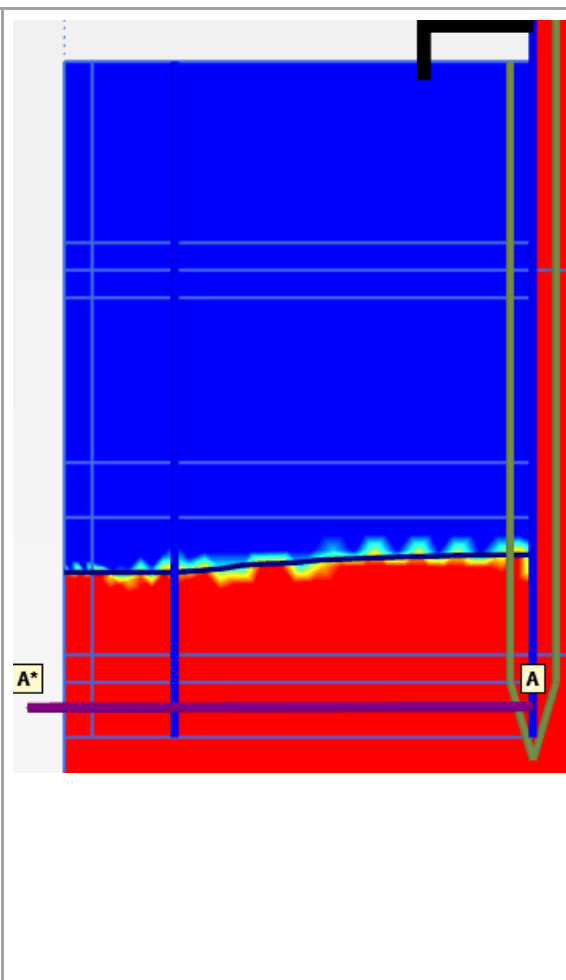
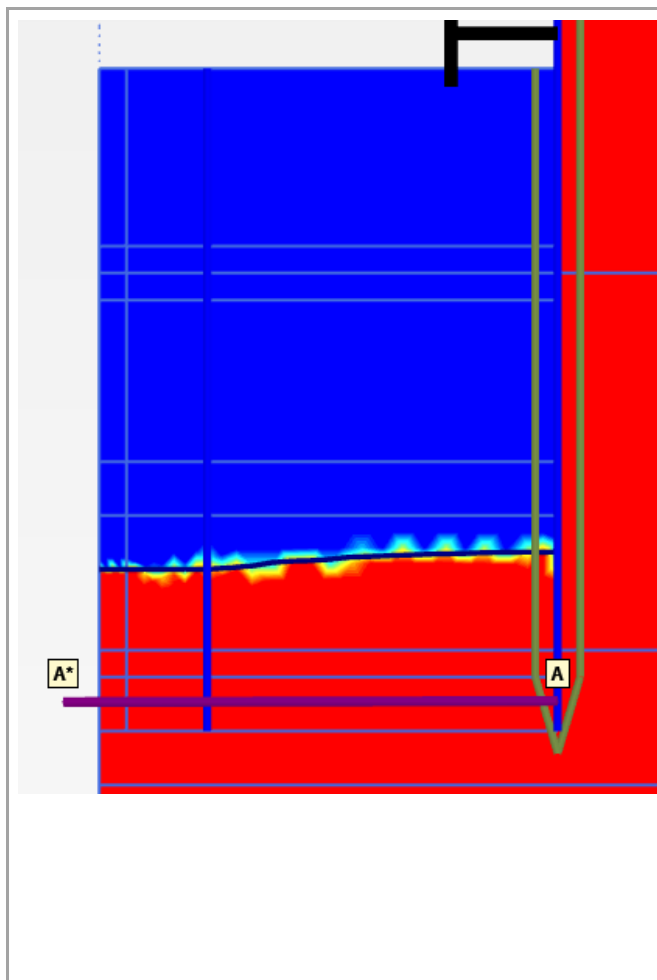


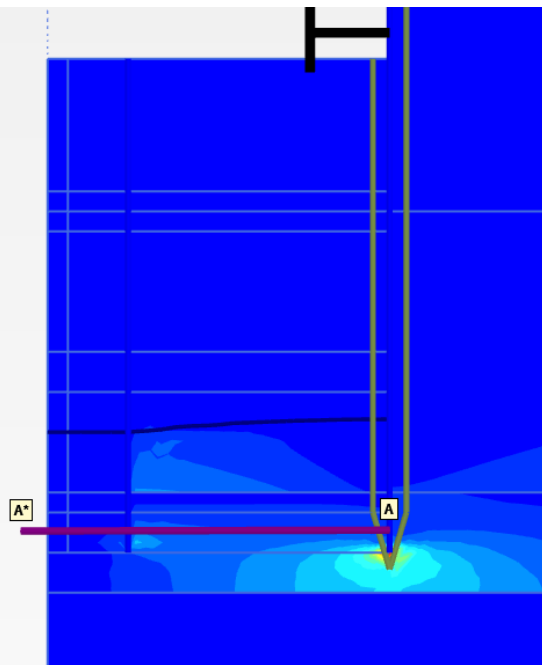
Q = 10

Case 3



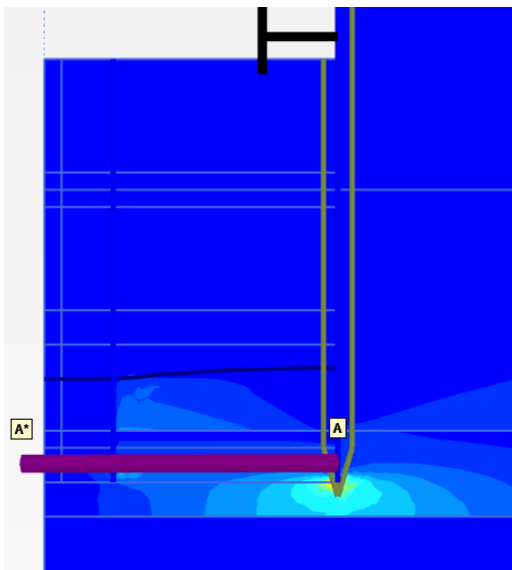
Q=10



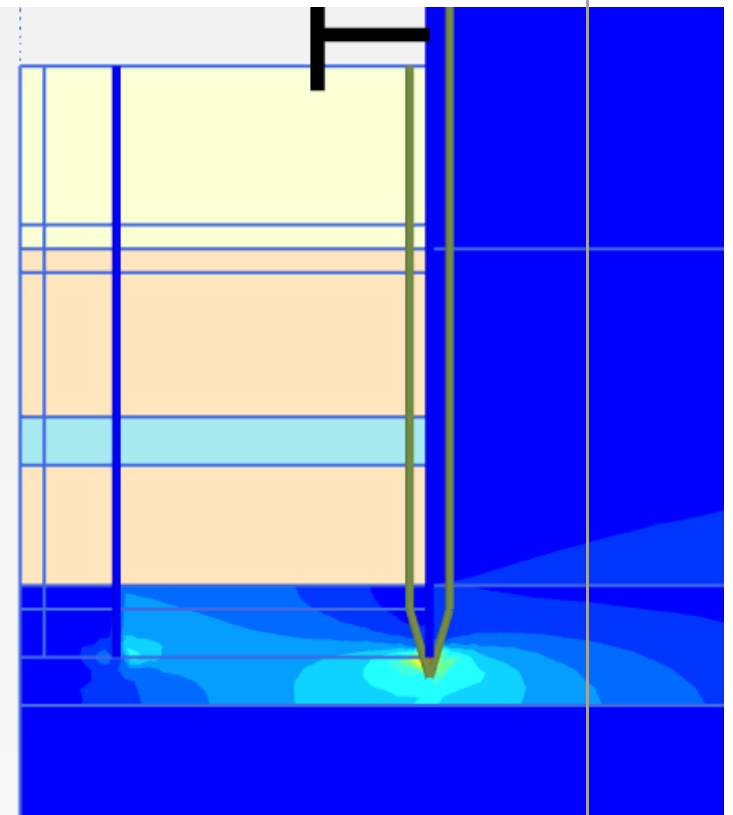


Groundwater flow $|q|$ (scaled up 0.200 times)
 Maximum value = 16.89 m/day (Element 2164 at Node 13561)
 Minimum value = $2.089 \cdot 10^{-12}$ m/day (Element 1788 at Node 5381)

Q = 16.89



Groundwater flow $|q|$ (scaled up 0.200 times)
 Maximum value = 16.89 m/day (Element 2164 at Node 13561)
 Minimum value = $2.089 \cdot 10^{-12}$ m/day (Element 1788 at Node 5381)



Groundwater flow $|q|$ (scaled up 0.200 times)
 Maximum value = 15.53 m/day (Element 2164 at Node 13561)
 Minimum value = $0.4227 \cdot 10^{-9}$ m/day (Element 203 at Node 17478)

