

Manage Annotations

Annotation Group: Hinge banks

Side Slope Annotation

Location

Features	TL_End Cond Fill Tie, TL_End Cond Cut Tie
Interval	20.0000
Left Offset	-1000.0000
Right Offset	1000.0000
Minors Per Major	1
Minors Size Scale	0.5000
Intervals to Skip	0
Intervals to Draw	1

Annotate

WithLine

Template

Placement

Rotation OptionPerpendicular

Rotation00°00'00.0"

Line

Length1.0000

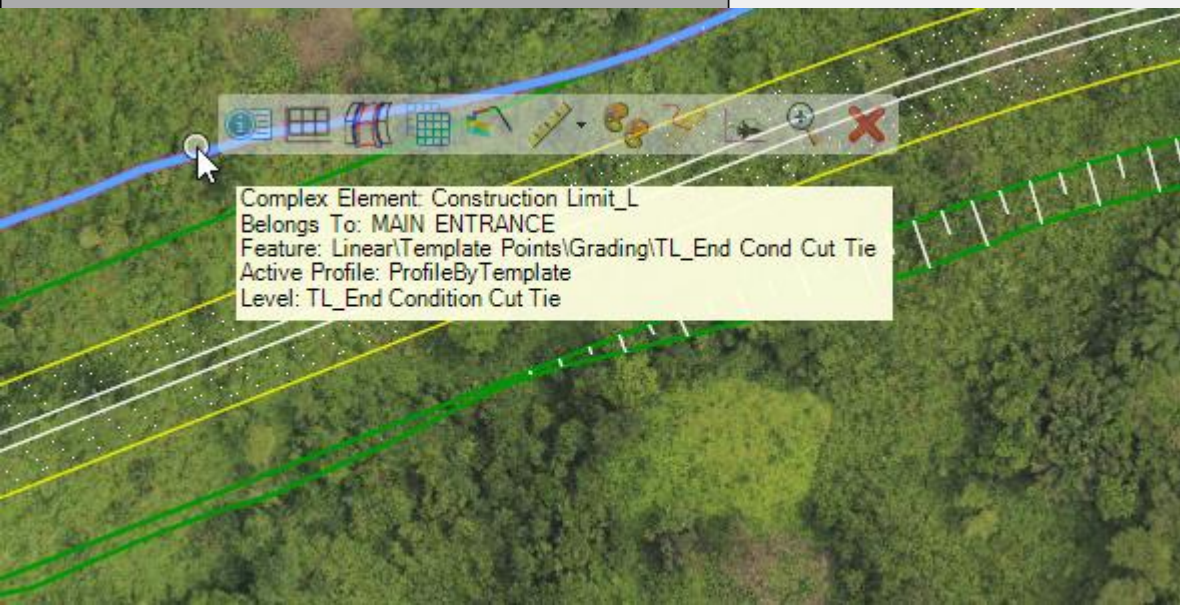
Cell

Name	
X Scale	1.0000
Y Scale	1.0000
Z Scale	1.0000
Apply Active Cell Scale	False

Display

Hide Selected

Highlight Selected



Properties (OpenRoads Standards)

Selection (1)
TL_End Cond Hinge

Explorer

Items
OpenRoads Model
Sheet Index
OpenRoads Standards

Search

Aquaplaning

Sight Visibility

Survey

Node

Conduit

Drainage Area

Feature Symbolologies

Linear

Alignment

Bridge

Pavement

Pavement Marking

Shoulder

Template Points

Grading

TL_End Cond Cut Tie

TL_End Cond Fill Tie

TL_End Cond Hinge

Pavement

Defaults

Default Element Ten Modeling\Template Point

Plan

Annotation Group

None

Element Template

None

Arc Element Templa

None

Spiral Element Tem

None

Profile Intersection

Element Template Modeling\Points\Interse

3D

Annotation Group

Hinge banks

Element Template

None

Dynamic Cross Section

Crossing Point Elerr None

Properties (OpenRoads Standards)

Selection (1)
TL_End Cond Fill Tie

Explorer

Items
OpenRoads Model
Sheet Index
OpenRoads Standards

Search

Aquaplaning

Sight Visibility

Survey

Node

Conduit

Drainage Area

Feature Symbolologies

Linear

Alignment

Bridge

Pavement

Pavement Marking

Shoulder

Template Points

Grading

TL_End Cond Cut Tie

TL_End Cond Fill Tie

TL_End Cond Hinge

Pavement

Defaults

Default Element Ten Modeling\Template Point

Plan

Annotation Group

None

Element Template

None

Arc Element Templa

None

Spiral Element Tem

None

Profile Intersection

Element Template Modeling\Points\Interse

3D

Annotation Group

None

Element Template

None

Dynamic Cross Section

Crossing Point Elerr None

Properties (OpenRoads Standards)

Selection (1)
TL_End Cond Cut Tie

Explorer

Items
OpenRoads Model
Sheet Index
OpenRoads Standards

Search

Aquaplaning

Sight Visibility

Survey

Node

Conduit

Drainage Area

Feature Symbolologies

Linear

Alignment

Bridge

Pavement

Pavement Marking

Shoulder

Template Points

Grading

TL_End Cond Cut Tie

TL_End Cond Fill Tie

TL_End Cond Hinge

Pavement

Defaults

Default Element Ten Modeling\Template Point

Plan

Annotation Group

None

Element Template

None

Arc Element Templa

None

Spiral Element Tem

None

Profile Intersection

Element Template Modeling\Points\Interse

3D

Annotation Group

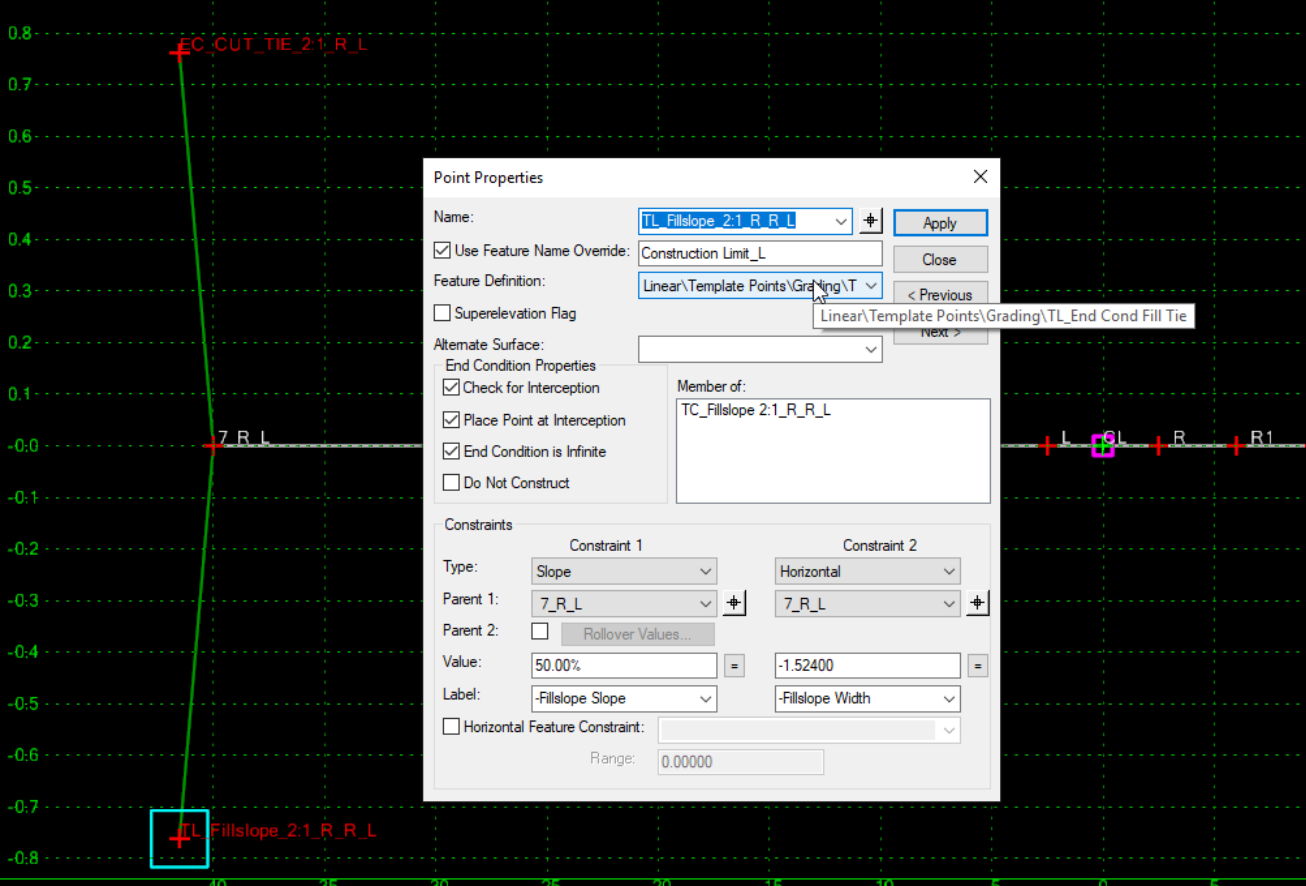
None

Element Template

None

Dynamic Cross Section

Crossing Point Elerr None



Point Properties

Name:

☒ Use Feature Name Override:

Feature Definition:

☐ Superelevation Flag

Alternate Surface:

End Condition Properties

☒ Check for Interception

☒ Place Point at Interception

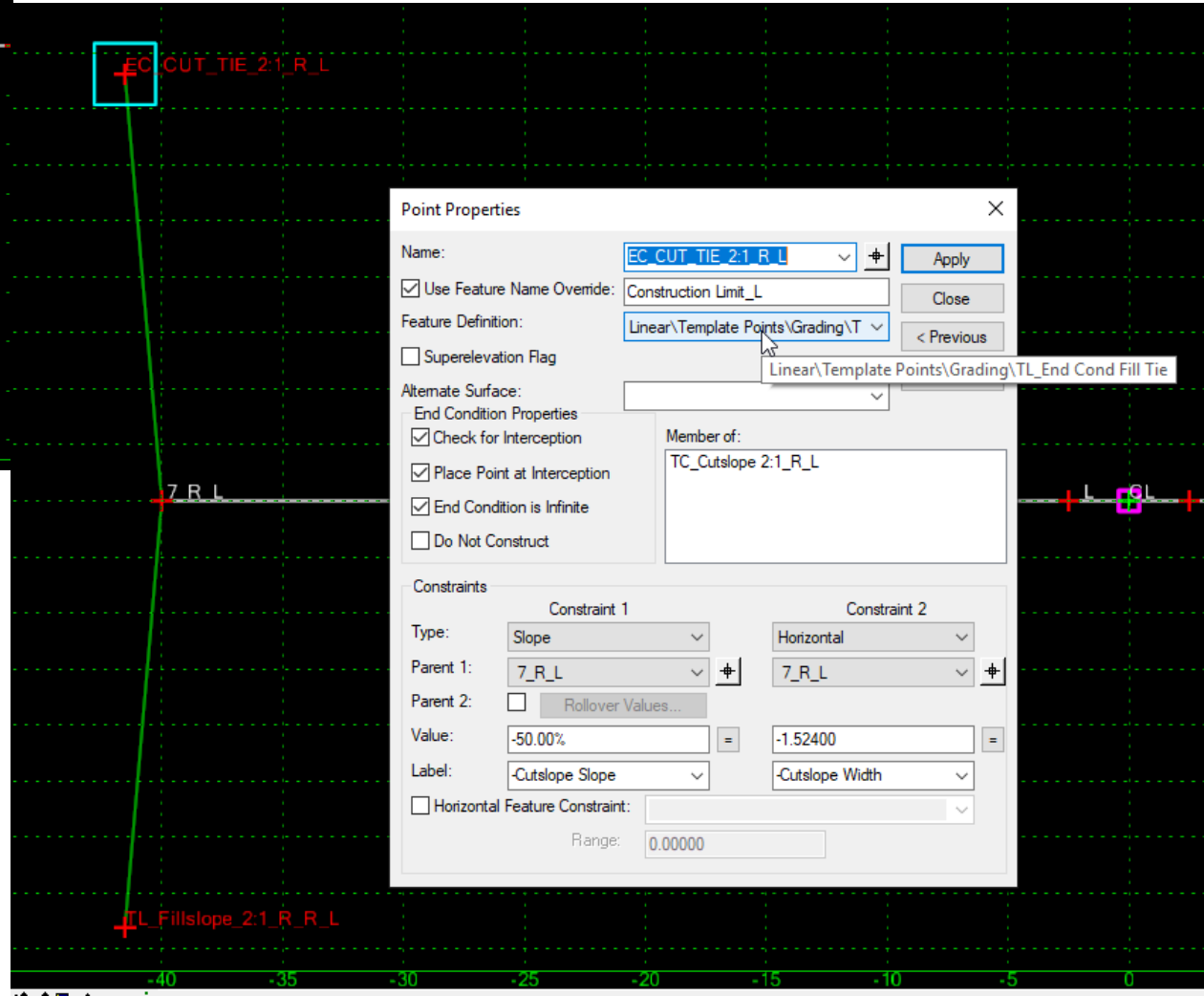
☒ End Condition is Infinite

☐ Do Not Construct

Member of:

Constraints

Constraint 1		Constraint 2	
Type:	<input type="text" value="Slope"/>		<input type="text" value="Horizontal"/>
Parent 1:	<input type="text" value="7_R_L"/>		<input type="text" value="7_R_L"/>
Parent 2:	<input type="checkbox"/> <input type="button" value="Rollover Values..."/>		
Value:	<input type="text" value="50.00%"/>	=	<input type="text" value="-1.52400"/>
Label:	<input type="text" value="-Fillslope Slope"/>		<input type="text" value="-Fillslope Width"/>
<input type="checkbox"/> Horizontal Feature Constraint: <input type="text" value=""/>			
Range: <input type="text" value="0.00000"/>			



Point Properties

Name:

☒ Use Feature Name Override:

Feature Definition:

☐ Superelevation Flag

Alternate Surface:

End Condition Properties

☒ Check for Interception

☒ Place Point at Interception

☒ End Condition is Infinite

☐ Do Not Construct

Member of:

Constraints

Constraint 1		Constraint 2	
Type:	<input type="text" value="Slope"/>		<input type="text" value="Horizontal"/>
Parent 1:	<input type="text" value="7_R_L"/>		<input type="text" value="7_R_L"/>
Parent 2:	<input type="checkbox"/> <input type="button" value="Rollover Values..."/>		
Value:	<input type="text" value="-50.00%"/>	=	<input type="text" value="-1.52400"/>
Label:	<input type="text" value="-Cutslope Slope"/>		<input type="text" value="-Cutslope Width"/>
<input type="checkbox"/> Horizontal Feature Constraint: <input type="text" value=""/>			
Range: <input type="text" value="0.00000"/>			