

CONNECTED User: Brett Eisenhauer

Job Title Learning Experience Sloping Awning

Part

Ref

By Date 03-Mar-23 Chd

Client Capitol Awning

File Sloped Awning 6ft Analys Date/Time 17-Mar-2023 09:45

## Job Information

	Engineer	Checked	Approved
Name:			
Date:	03-Mar-23		

Project ID	
Project Name	

Structure Type	SPACE FRAME
----------------	-------------

Number of Nodes	29	Highest Node	99
Number of Elements	33	Highest Beam	165

Number of Basic Load Cases	5
Number of Combination Load Cases	38

Included in this printout are data for:

All	The Whole Structure
-----	---------------------

Included in this printout are results for load cases:

Type	L/C	Name
Primary	1	DEAD
Primary	2	LIVE
Primary	3	SNOW
Primary	4	WIND+
Primary	5	WIND-
Combination	1003	1.4 DEAD
Combination	1004	1.2 DEAD + 0.5 ROOF LIVE
Combination	1005	1.2 DEAD + 0.5 SNOW
Combination	1006	1.2 DEAD
Combination	1007	1.2 DEAD + 1.6 ROOF LIVE
Combination	1008	1.2 DEAD + 1.6 ROOF LIVE + 0.5 WIND 1
Combination	1009	1.2 DEAD + 1.6 ROOF LIVE + 0.5 WIND 2
Combination	1010	1.2 DEAD + 1.6 SNOW
Combination	1011	1.2 DEAD + 0.5 WIND + 1.6 SNOW 1
Combination	1012	1.2 DEAD + 0.5 WIND + 1.6 SNOW 2
Combination	1013	1.2 DEAD + 0.5 WIND 1
Combination	1014	1.2 DEAD + 0.5 WIND 2
Combination	1015	1.2 DEAD + 0.5 ROOF LIVE + 1 WIND 1
Combination	1016	1.2 DEAD + 0.5 ROOF LIVE + 1 WIND 2
Combination	1017	1.2 DEAD + 1 WIND + 0.5 SNOW 1
Combination	1018	1.2 DEAD + 1 WIND + 0.5 SNOW 2
Combination	1019	1.2 DEAD + 1 WIND 1
Combination	1020	1.2 DEAD + 1 WIND 2
Combination	1021	0.9 DEAD + 1 WIND 1
Combination	1022	0.9 DEAD + 1 WIND 2

CONNECTED User: Brett Eisenhauer

Job Title Learning Experience Sloping Awning

Part

Ref

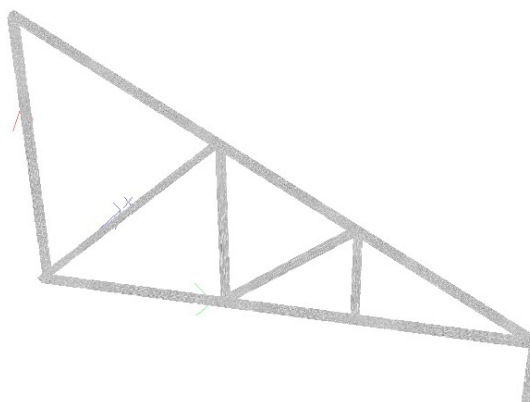
By Date 03-Mar-23 Chd

Client Capitol Awning

File Sloped Awning 6ft Analys Date/Time 17-Mar-2023 09:45

## Job Information Cont...

Type	L/C	Name
Combination	1023	1.2 DEAD + 0.2 SNOW
Combination	1024	0.9 DEAD
Combination	1025	1 DEAD
Combination	1026	1 DEAD + 1 SNOW
Combination	1027	1 DEAD + 1 ROOF LIVE
Combination	1028	1 DEAD + 0.75 ROOF LIVE
Combination	1029	1 DEAD + 0.75 SNOW
Combination	1030	1 DEAD + 0.6 WIND 1
Combination	1031	1 DEAD + 0.6 WIND 2
Combination	1032	1 DEAD + 0.75 ROOF LIVE + 0.75 WIND 1
Combination	1033	1 DEAD + 0.75 ROOF LIVE + 0.75 WIND 2
Combination	1034	1 DEAD + 0.75 WIND + 0.75 SNOW 1
Combination	1035	1 DEAD + 0.75 WIND + 0.75 SNOW 2
Combination	1036	1 DEAD + 0.75 WIND 1
Combination	1037	1 DEAD + 0.75 WIND 2
Combination	1038	0.6 DEAD + 0.6 WIND 1
Combination	1039	0.6 DEAD + 0.6 WIND 2
Combination	1040	0.6 DEAD



3D Rendered View

CONNECTED User: Brett Eisenhauer

Job Title Learning Experience Sloping Awning

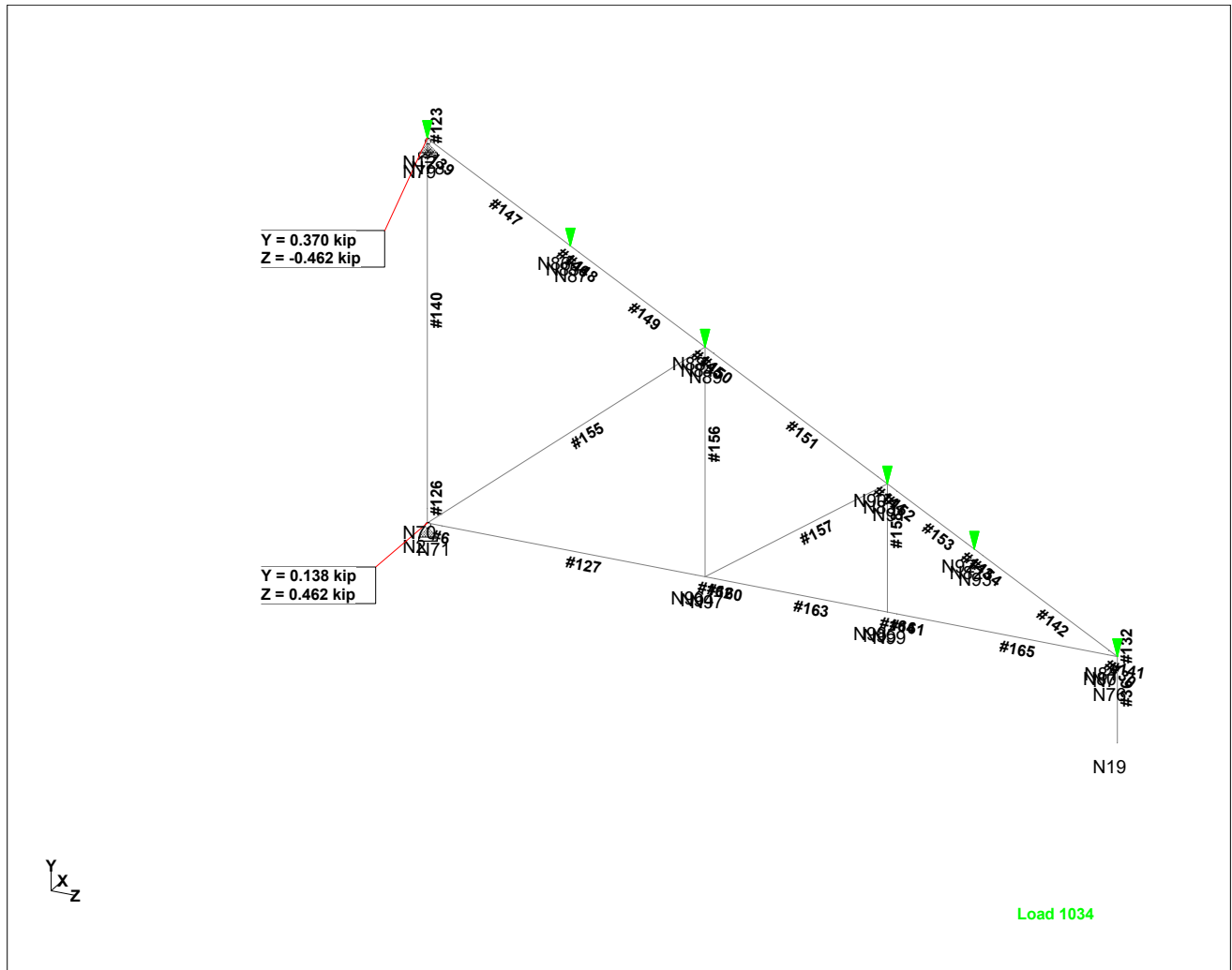
Part

Ref

By Date 03-Mar-23 Chd

Client Capitol Awning

File Sloped Awning 6ft Analys Date/Time 17-Mar-2023 09:45



Maximum Reactions LC: 1034 1 DEAD + 0.75 WIND + 0.75 SNOW 1

CONNECTED User: Brett Eisenhauer

Part

Job Title Learning Experience Sloping Awning

Ref

By Date 03-Mar-23 Chd

Client Capitol Awning

File Sloped Awning 6ft Analys Date/Time 17-Mar-2023 09:45

## Nodes

Node	X (in)	Y (in)	Z (in)
2	0	0	0
7	0	0	72.000
12	0	40.000	0
19	0	-9.000	72.000
70	0	1.500	0
71	0	0	1.500
76	0	-1.500	72.000
78	0	39.514	0.874
79	0	39.000	0
80	0	0	71.000
81	0	0.486	71.126
82	0	8.291	57.076
83	0	13.334	48.000
84	0	23.903	28.975
85	0	31.709	14.924
86	0	32.194	14.050
87	0	31.223	15.799
88	0	24.389	28.101
89	0	23.417	29.849
90	0	13.889	47.000
91	0	12.778	49.000
92	0	8.777	56.201
93	0	7.806	57.950
94	0	0	28.975
95	0	0	48.000
96	0	0	27.975
97	0	0	29.975
98	0	0	47.000
99	0	0	49.000

CONNECTED User: Brett Eisenhauer

Part

Job Title Learning Experience Sloping Awning

Ref

By Date 03-Mar-23 Chd

Client Capitol Awning

File Sloped Awning 6ft Analys Date/Time 17-Mar-2023 09:45

## Reaction Summary

			Horizontal	Vertical	Horizontal	Moment		
	Node	L/C	FX (kip)	FY (kip)	FZ (kip)	MX (kip·ft)	MY (kip·ft)	MZ (kip·ft)
Max FX	2	1:DEAD	0	0.020	0.059	0	0	0
Min FX	2	1:DEAD	0	0.020	0.059	0	0	0
Max FY	12	1011:1.2 DEAC	0	0.532	-0.664	0	0	0
Min FY	12	5:WIND-	0	-0.137	0.169	0	0	0
Max FZ	2	1011:1.2 DEAC	0	0.197	0.664	0	0	0
Min FZ	12	1011:1.2 DEAC	0	0.532	-0.664	0	0	0
Max MX	2	1:DEAD	0	0.020	0.059	0	0	0
Min MX	2	1:DEAD	0	0.020	0.059	0	0	0
Max MY	2	1:DEAD	0	0.020	0.059	0	0	0
Min MY	2	1:DEAD	0	0.020	0.059	0	0	0
Max MZ	2	1:DEAD	0	0.020	0.059	0	0	0
Min MZ	2	1:DEAD	0	0.020	0.059	0	0	0

## Supports

Node	X (kip/in)	Y (kip/in)	Z (kip/in)	rX (kip·ft/deg)	rY (kip·ft/deg)	rZ (kip·ft/deg)
2	Fixed	Fixed	Fixed	-	-	-
12	Fixed	Fixed	Fixed	-	-	-

## Primary Load Cases

Number	Name	Type
1	DEAD	Dead
2	LIVE	Roof Live
3	SNOW	Snow
4	WIND+	Wind
5	WIND-	Wind

CONNECTED User: Brett Eisenhauer

Job Title Learning Experience Sloping Awning

Part

Ref

By Date 03-Mar-23 Chd

Client Capitol Awning

File Sloped Awning 6ft Analys Date/Time 17-Mar-2023 09:45

## Beam Combined Axial and Bending Stresses Summary

Beam	L/C	Length (in)	Max Comp			Max Tens		
			Stress (psi)	d (in)	Corner	Stress (psi)	d (in)	Corner
6	1:DEAD	1.500	107.060	0	1			
	2:LIVE	1.500	168.455	0	1			
	3:SNOW	1.500	542.964	0	1			
	4:WIND+	1.500	444.732	0	1			
	5:WIND-	1.500				-319.216	1.500	3
	1003:1.4 DEAC	1.500	149.884	0	1			
	1004:1.2 DEAC	1.500	212.700	0	1			
	1005:1.2 DEAC	1.500	399.954	0	1			
	1006:1.2 DEAC	1.500	128.472	0	1			
	1007:1.2 DEAC	1.500	398.000	0	1			
	1008:1.2 DEAC	1.500	620.366	0	1			
	1009:1.2 DEAC	1.500	239.717	0	1			
	1010:1.2 DEAC	1.500	997.215	0	1			
	1011:1.2 DEAC	1.500	1.22E+3	0	1			
	1012:1.2 DEAC	1.500	838.932	0	1			
	1013:1.2 DEAC	1.500	350.838	0	1			
	1014:1.2 DEAC	1.500				-39.654	1.500	3
	1015:1.2 DEAC	1.500	657.432	0	1			
	1016:1.2 DEAC	1.500				-118.905	1.500	3
	1017:1.2 DEAC	1.500	844.687	0	1			
	1018:1.2 DEAC	1.500	83.389	0	1			
	1019:1.2 DEAC	1.500	573.204	0	1			
	1020:1.2 DEAC	1.500				-199.261	1.500	3
	1021:0.9 DEAC	1.500	541.086	0	1			
	1022:0.9 DEAC	1.500				-229.250	1.500	3
	1023:1.2 DEAC	1.500	237.065	0	1			
	1024:0.9 DEAC	1.500	96.354	0	1			
	1025:1 DEAD	1.500	107.060	0	1			
	1026:1 DEAD +	1.500	650.024	0	1			
	1027:1 DEAD +	1.500	275.515	0	1			
	1028:1 DEAD +	1.500	233.401	0	1			
	1029:1 DEAD +	1.500	514.283	0	1			
	1030:1 DEAD +	1.500	373.900	0	1			
	1031:1 DEAD +	1.500				-91.568	1.500	3
	1032:1 DEAD +	1.500	566.951	0	1			
	1033:1 DEAD +	1.500	4.680	1.500	1	-18.916	1.500	3
	1034:1 DEAD +	1.500	847.833	0	1			
	1035:1 DEAD +	1.500	276.859	0	1			
	1036:1 DEAD +	1.500	440.609	0	1			
	1037:1 DEAD +	1.500				-139.450	1.500	3
	1038:0.6 DEAC	1.500	331.076	0	1			
	1039:0.6 DEAC	1.500				-131.552	1.500	3
	1040:0.6 DEAC	1.500	64.236	0	1			
36	1:DEAD	7.500	0.000	0	1	-0.735	7.500	1

CONNECTED User: Brett Eisenhauer

Job Title Learning Experience Sloping Awning

Part

Ref

By Date 03-Mar-23 Chd

Client Capitol Awning

File Sloped Awning 6ft Analys Date/Time 17-Mar-2023 09:45

## Beam Combined Axial and Bending Stresses Summary Cont...

Beam	L/C	Length (in)	Max Comp			Max Tens		
			Stress (psi)	d (in)	Corner	Stress (psi)	d (in)	Corner
	2:LIVE	7.500	0.000	0	2	-0.735	7.500	1
	3:SNOW	7.500				-0.735	7.500	1
	4:WIND+	7.500	0.000	0	1	-0.735	7.500	1
	5:WIND-	7.500				-0.735	7.500	1
	1003:1.4 DEAC	7.500	0.000	0	1	-1.029	7.500	1
	1004:1.2 DEAC	7.500	0.000	0	1	-1.249	7.500	1
	1005:1.2 DEAC	7.500				-1.249	7.500	1
	1006:1.2 DEAC	7.500	0.000	0	1	-0.882	7.500	1
	1007:1.2 DEAC	7.500	0.000	0	2	-2.058	7.500	1
	1008:1.2 DEAC	7.500	0.000	0	1	-2.425	7.500	1
	1009:1.2 DEAC	7.500	0.000	0	2	-2.425	7.500	1
	1010:1.2 DEAC	7.500				-2.058	7.500	1
	1011:1.2 DEAC	7.500				-2.425	7.500	1
	1012:1.2 DEAC	7.500				-2.425	7.500	1
	1013:1.2 DEAC	7.500	0.000	0	1	-1.249	7.500	1
	1014:1.2 DEAC	7.500	0.000	0	1	-1.249	7.500	1
	1015:1.2 DEAC	7.500	0.000	0	1	-1.985	7.500	1
	1016:1.2 DEAC	7.500	0.000	0	1	-1.985	7.500	1
	1017:1.2 DEAC	7.500				-1.985	7.500	1
	1018:1.2 DEAC	7.500				-1.985	7.500	1
	1019:1.2 DEAC	7.500	0.000	0	1	-1.617	7.500	1
	1020:1.2 DEAC	7.500	0.000	0	1	-1.617	7.500	1
	1021:0.9 DEAC	7.500	0.000	0	1	-1.396	7.500	1
	1022:0.9 DEAC	7.500	0.000	0	1	-1.396	7.500	1
	1023:1.2 DEAC	7.500				-1.029	7.500	1
	1024:0.9 DEAC	7.500	0.000	0	1	-0.661	7.500	1
	1025:1 DEAD	7.500	0.000	0	1	-0.735	7.500	1
	1026:1 DEAD +	7.500				-1.470	7.500	1
	1027:1 DEAD +	7.500				-1.470	7.500	1
	1028:1 DEAD +	7.500	0.000	0	1	-1.286	7.500	1
	1029:1 DEAD +	7.500				-1.286	7.500	1
	1030:1 DEAD +	7.500	0.000	0	1	-1.176	7.500	1
	1031:1 DEAD +	7.500	0.000	0	1	-1.176	7.500	1
	1032:1 DEAD +	7.500	0.000	0	1	-1.837	7.500	1
	1033:1 DEAD +	7.500	0.000	0	1	-1.837	7.500	1
	1034:1 DEAD +	7.500				-1.837	7.500	1
	1035:1 DEAD +	7.500				-1.837	7.500	1
	1036:1 DEAD +	7.500	0.000	0	1	-1.286	7.500	1
	1037:1 DEAD +	7.500	0.000	0	1	-1.286	7.500	1
	1038:0.6 DEAC	7.500	0.000	0	1	-0.882	7.500	1
	1039:0.6 DEAC	7.500	0.000	0	1	-0.882	7.500	1
	1040:0.6 DEAC	7.500	0.000	0	1	-0.441	7.500	1
123	1:DEAD	1.000	167.081	0	2	-171.001	0	1
	2:LIVE	1.000	264.582	0	2	-268.502	0	1

CONNECTED User: Brett Eisenhauer

Job Title Learning Experience Sloping Awning

Part

Ref

By Date 03-Mar-23 Chd

Client Capitol Awning

File Sloped Awning 6ft Analys Date/Time 17-Mar-2023 09:45

## Beam Combined Axial and Bending Stresses Summary Cont...

Beam	L/C	Length (in)	Max Comp			Max Tens		
			Stress (psi)	d (in)	Corner	Stress (psi)	d (in)	Corner
	3:SNOW	1.000	859.337	0	2	-863.257	0	1
	4:WIND+	1.000	703.336	0	2	-707.256	0	1
	5:WIND-	1.000	501.755	0	1	-505.675	0	2
	1003:1.4 DEAC	1.000	233.914	0	2	-239.402	0	1
	1004:1.2 DEAC	1.000	332.788	0	2	-339.452	0	1
	1005:1.2 DEAC	1.000	630.166	0	2	-636.830	0	1
	1006:1.2 DEAC	1.000	200.497	0	2	-205.201	0	1
	1007:1.2 DEAC	1.000	623.829	0	2	-634.805	0	1
	1008:1.2 DEAC	1.000	975.497	0	2	-988.433	0	1
	1009:1.2 DEAC	1.000	370.991	0	2	-383.927	0	1
	1010:1.2 DEAC	1.000	1.58E+3	0	2	-1.59E+3	0	1
	1011:1.2 DEAC	1.000	1.93E+3	0	2	-1.94E+3	0	1
	1012:1.2 DEAC	1.000	1.32E+3	0	2	-1.34E+3	0	1
	1013:1.2 DEAC	1.000	552.165	0	2	-558.829	0	1
	1014:1.2 DEAC	1.000	45.676	0	1	-52.340	0	2
	1015:1.2 DEAC	1.000	1.04E+3	0	2	-1.05E+3	0	1
	1016:1.2 DEAC	1.000	162.302	0	1	-172.886	0	2
	1017:1.2 DEAC	1.000	1.33E+3	0	2	-1.34E+3	0	1
	1018:1.2 DEAC	1.000	124.491	0	2	-135.075	0	1
	1019:1.2 DEAC	1.000	903.833	0	2	-912.457	0	1
	1020:1.2 DEAC	1.000	296.553	0	1	-305.177	0	2
	1021:0.9 DEAC	1.000	853.709	0	2	-861.157	0	1
	1022:0.9 DEAC	1.000	347.854	0	1	-355.302	0	2
	1023:1.2 DEAC	1.000	372.365	0	2	-377.853	0	1
	1024:0.9 DEAC	1.000	150.373	0	2	-153.901	0	1
	1025:1 DEAD	1.000	167.081	0	2	-171.001	0	1
	1026:1 DEAD +	1.000	1.03E+3	0	2	-1.03E+3	0	1
	1027:1 DEAD +	1.000	431.663	0	2	-439.503	0	1
	1028:1 DEAD +	1.000	365.518	0	2	-372.378	0	1
	1029:1 DEAD +	1.000	811.584	0	2	-818.444	0	1
	1030:1 DEAD +	1.000	589.083	0	2	-595.355	0	1
	1031:1 DEAD +	1.000	130.052	0	1	-136.324	0	2
	1032:1 DEAD +	1.000	893.020	0	2	-902.820	0	1
	1033:1 DEAD +	1.000	4.803	1.000	1	-14.113	1.000	2
	1034:1 DEAD +	1.000	1.34E+3	0	2	-1.35E+3	0	1
	1035:1 DEAD +	1.000	432.328	0	2	-442.128	0	1
	1036:1 DEAD +	1.000	694.583	0	2	-701.443	0	1
	1037:1 DEAD +	1.000	205.315	0	1	-212.175	0	2
	1038:0.6 DEAC	1.000	522.250	0	2	-526.954	0	1
	1039:0.6 DEAC	1.000	198.452	0	1	-203.156	0	2
	1040:0.6 DEAC	1.000	100.249	0	2	-102.601	0	1
126	1:DEAD	1.500	96.237	1.500	1	-92.317	1.500	2
	2:LIVE	1.500	141.905	1.500	1	-137.985	1.500	2
	3:SNOW	1.500	420.476	1.500	1	-416.556	1.500	2

CONNECTED User: Brett Eisenhauer

Part

Job Title Learning Experience Sloping Awning

Ref

By Date 03-Mar-23 Chd

Client Capitol Awning

File Sloped Awning 6ft Analys Date/Time 17-Mar-2023 09:45

## Beam Combined Axial and Bending Stresses Summary Cont...

Beam	L/C	Length (in)	Max Comp			Max Tens		
			Stress (psi)	d (in)	Corner	Stress (psi)	d (in)	Corner
	4:WIND+	1.500	347.408	1.500	1	-343.488	1.500	2
	5:WIND-	1.500	222.787	1.500	2	-218.867	1.500	1
	1003:1.4 DEAC	1.500	134.732	1.500	1	-129.244	1.500	2
	1004:1.2 DEAC	1.500	186.437	1.500	1	-179.773	1.500	2
	1005:1.2 DEAC	1.500	325.723	1.500	1	-319.059	1.500	2
	1006:1.2 DEAC	1.500	115.485	1.500	1	-110.781	1.500	2
	1007:1.2 DEAC	1.500	342.533	1.500	1	-331.557	1.500	2
	1008:1.2 DEAC	1.500	516.237	1.500	1	-503.301	1.500	2
	1009:1.2 DEAC	1.500	233.099	1.500	1	-220.163	1.500	2
	1010:1.2 DEAC	1.500	788.246	1.500	1	-777.270	1.500	2
	1011:1.2 DEAC	1.500	961.950	1.500	1	-949.014	1.500	2
	1012:1.2 DEAC	1.500	678.812	1.500	1	-665.876	1.500	2
	1013:1.2 DEAC	1.500	289.189	1.500	1	-282.525	1.500	2
	1014:1.2 DEAC	1.500	7.537	0	1	-1.373	0	2
	1015:1.2 DEAC	1.500	533.845	1.500	1	-523.261	1.500	2
	1016:1.2 DEAC	1.500	43.014	1.500	2	-32.430	1.500	1
	1017:1.2 DEAC	1.500	673.131	1.500	1	-662.547	1.500	2
	1018:1.2 DEAC	1.500	106.856	1.500	1	-96.272	1.500	2
	1019:1.2 DEAC	1.500	462.893	1.500	1	-454.269	1.500	2
	1020:1.2 DEAC	1.500	112.006	1.500	2	-103.382	1.500	1
	1021:0.9 DEAC	1.500	434.022	1.500	1	-426.574	1.500	2
	1022:0.9 DEAC	1.500	139.702	1.500	2	-132.254	1.500	1
	1023:1.2 DEAC	1.500	199.580	1.500	1	-194.092	1.500	2
	1024:0.9 DEAC	1.500	86.614	1.500	1	-83.086	1.500	2
	1025:1 DEAD	1.500	96.237	1.500	1	-92.317	1.500	2
	1026:1 DEAD +	1.500	516.713	1.500	1	-508.873	1.500	2
	1027:1 DEAD +	1.500	238.142	1.500	1	-230.302	1.500	2
	1028:1 DEAD +	1.500	202.666	1.500	1	-195.806	1.500	2
	1029:1 DEAD +	1.500	411.594	1.500	1	-404.734	1.500	2
	1030:1 DEAD +	1.500	304.682	1.500	1	-298.410	1.500	2
	1031:1 DEAD +	1.500	41.355	1.500	2	-35.083	1.500	1
	1032:1 DEAD +	1.500	463.222	1.500	1	-453.422	1.500	2
	1033:1 DEAD +	1.500	38.516	1.500	1	-28.716	1.500	2
	1034:1 DEAD +	1.500	672.150	1.500	1	-662.350	1.500	2
	1035:1 DEAD +	1.500	247.444	1.500	1	-237.644	1.500	2
	1036:1 DEAD +	1.500	356.793	1.500	1	-349.933	1.500	2
	1037:1 DEAD +	1.500	74.773	1.500	2	-67.913	1.500	1
	1038:0.6 DEAC	1.500	266.187	1.500	1	-261.483	1.500	2
	1039:0.6 DEAC	1.500	78.282	1.500	2	-73.578	1.500	1
	1040:0.6 DEAC	1.500	57.742	1.500	1	-55.390	1.500	2
127	1:DEAD	26.475	114.114	26.475	3			
	2:LIVE	26.475	163.488	26.475	3			
	3:SNOW	26.475	531.290	0	1			
	4:WIND+	26.475	434.089	0	1			

CONNECTED User: Brett Eisenhauer

Job Title Learning Experience Sloping Awning

Part

Ref

By

Date 03-Mar-23

Chd

Client Capitol Awning

File Sloped Awning 6ft Analys

Date/Time 17-Mar-2023 09:45

## Beam Combined Axial and Bending Stresses Summary Cont...

Beam	L/C	Length (in)	Max Comp			Max Tens		
			Stress (psi)	d (in)	Corner	Stress (psi)	d (in)	Corner
	5:WIND-	26.475				-322.101	4.412	3
	1003:1.4 DEAC	26.475	159.760	26.475	3			
	1004:1.2 DEAC	26.475	218.681	26.475	3			
	1005:1.2 DEAC	26.475	385.599	0	1			
	1006:1.2 DEAC	26.475	136.937	26.475	3			
	1007:1.2 DEAC	26.475	398.518	26.475	3			
	1008:1.2 DEAC	26.475	594.139	0	1			
	1009:1.2 DEAC	26.475	285.236	26.475	3			
	1010:1.2 DEAC	26.475	970.018	0	1			
	1011:1.2 DEAC	26.475	1.19E+3	0	1			
	1012:1.2 DEAC	26.475	810.410	0	1			
	1013:1.2 DEAC	26.475	336.999	0	1			
	1014:1.2 DEAC	26.475	23.656	26.475	3	-77.558	26.475	1
	1015:1.2 DEAC	26.475	634.400	0	1			
	1016:1.2 DEAC	26.475				-170.042	26.475	1
	1017:1.2 DEAC	26.475	819.688	0	1			
	1018:1.2 DEAC	26.475	142.707	26.475	3	-14.786	26.475	1
	1019:1.2 DEAC	26.475	554.043	0	1			
	1020:1.2 DEAC	26.475				-227.228	8.825	3
	1021:0.9 DEAC	26.475	524.055	0	1			
	1022:0.9 DEAC	26.475				-249.912	6.619	3
	1023:1.2 DEAC	26.475	229.870	26.475	3			
	1024:0.9 DEAC	26.475	102.703	26.475	3			
	1025:1 DEAD	26.475	114.114	26.475	3			
	1026:1 DEAD +	26.475	631.252	0	1			
	1027:1 DEAD +	26.475	277.602	26.475	3			
	1028:1 DEAD +	26.475	236.730	26.475	3			
	1029:1 DEAD +	26.475	498.429	0	1			
	1030:1 DEAD +	26.475	360.415	0	1			
	1031:1 DEAD +	26.475				-118.450	26.475	1
	1032:1 DEAD +	26.475	546.063	0	1			
	1033:1 DEAD +	26.475	66.808	26.475	3	-81.044	26.475	1
	1034:1 DEAD +	26.475	823.996	0	1			
	1035:1 DEAD +	26.475	292.692	26.475	3			
	1036:1 DEAD +	26.475	425.529	0	1			
	1037:1 DEAD +	26.475				-162.886	8.825	3
	1038:0.6 DEAC	26.475	320.431	0	1			
	1039:0.6 DEAC	26.475				-145.380	8.825	3
	1040:0.6 DEAC	26.475	68.469	26.475	3			
130	1:DEAD	1.000	60.218	0	3	-166.762	0	1
	2:LIVE	1.000	102.383	0	3	-272.929	0	1
	3:SNOW	1.000	359.593	0	3	-920.545	0	1
	4:WIND+	1.000	292.128	0	3	-750.679	0	1
	5:WIND-	1.000	565.788	0	1	-230.725	0	3

CONNECTED User: Brett Eisenhauer

Job Title Learning Experience Sloping Awning

Part

Ref

By Date 03-Mar-23 Chd

Client Capitol Awning

File Sloped Awning 6ft Analys Date/Time 17-Mar-2023 09:45

## Beam Combined Axial and Bending Stresses Summary Cont...

Beam	L/C	Length (in)	Max Comp			Max Tens		
			Stress (psi)	d (in)	Corner	Stress (psi)	d (in)	Corner
	1003:1.4 DEAC	1.000	84.305	0	3	-233.467	0	1
	1004:1.2 DEAC	1.000	123.453	0	3	-336.579	0	1
	1005:1.2 DEAC	1.000	252.058	0	3	-660.387	0	1
	1006:1.2 DEAC	1.000	72.261	0	3	-200.114	0	1
	1007:1.2 DEAC	1.000	236.075	0	3	-636.800	0	1
	1008:1.2 DEAC	1.000	382.139	0	3	-1.01E+3	0	1
	1009:1.2 DEAC	1.000	120.713	0	3	-353.906	0	1
	1010:1.2 DEAC	1.000	647.611	0	3	-1.67E+3	0	1
	1011:1.2 DEAC	1.000	793.675	0	3	-2.05E+3	0	1
	1012:1.2 DEAC	1.000	532.248	0	3	-1.39E+3	0	1
	1013:1.2 DEAC	1.000	218.326	0	3	-575.454	0	1
	1014:1.2 DEAC	1.000	82.780	0	1	-43.101	0	3
	1015:1.2 DEAC	1.000	415.582	0	3	-1.09E+3	0	1
	1016:1.2 DEAC	1.000	229.209	0	1	-107.271	0	3
	1017:1.2 DEAC	1.000	544.186	0	3	-1.41E+3	0	1
	1018:1.2 DEAC	1.000	21.334	0	3	-94.599	0	1
	1019:1.2 DEAC	1.000	364.390	0	3	-950.793	0	1
	1020:1.2 DEAC	1.000	365.674	0	1	-158.463	0	3
	1021:0.9 DEAC	1.000	346.325	0	3	-900.764	0	1
	1022:0.9 DEAC	1.000	415.702	0	1	-176.529	0	3
	1023:1.2 DEAC	1.000	144.180	0	3	-384.223	0	1
	1024:0.9 DEAC	1.000	54.196	0	3	-150.086	0	1
	1025:1 DEAD	1.000	60.218	0	3	-166.762	0	1
	1026:1 DEAD +	1.000	419.811	0	3	-1.09E+3	0	1
	1027:1 DEAD +	1.000	162.601	0	3	-439.691	0	1
	1028:1 DEAD +	1.000	137.005	0	3	-371.458	0	1
	1029:1 DEAD +	1.000	329.913	0	3	-857.171	0	1
	1030:1 DEAD +	1.000	235.495	0	3	-617.169	0	1
	1031:1 DEAD +	1.000	172.711	0	1	-78.217	0	3
	1032:1 DEAD +	1.000	356.102	0	3	-934.467	0	1
	1033:1 DEAD +	1.000	52.883	0	1	-36.038	0	3
	1034:1 DEAD +	1.000	549.009	0	3	-1.42E+3	0	1
	1035:1 DEAD +	1.000	156.869	0	3	-432.830	0	1
	1036:1 DEAD +	1.000	279.314	0	3	-729.771	0	1
	1037:1 DEAD +	1.000	257.579	0	1	-112.826	0	3
	1038:0.6 DEAC	1.000	211.408	0	3	-550.464	0	1
	1039:0.6 DEAC	1.000	239.416	0	1	-102.304	0	3
	1040:0.6 DEAC	1.000	36.131	0	3	-100.057	0	1
132	1:DEAD	1.500				-0.882	1.500	1
	2:LIVE	1.500				-0.882	1.500	1
	3:SNOW	1.500				-0.882	1.500	1
	4:WIND+	1.500				-0.882	1.500	1
	5:WIND-	1.500				-0.882	1.500	1
	1003:1.4 DEAC	1.500				-1.235	1.500	1

CONNECTED User: Brett Eisenhauer

Job Title Learning Experience Sloping Awning

Part

Ref

By Date 03-Mar-23 Chd

Client Capitol Awning

File Sloped Awning 6ft Analys Date/Time 17-Mar-2023 09:45

## Beam Combined Axial and Bending Stresses Summary Cont...

Beam	L/C	Length (in)	Max Comp			Max Tens		
			Stress (psi)	d (in)	Corner	Stress (psi)	d (in)	Corner
	1004:1.2 DEAC	1.500				-1.499	1.500	1
	1005:1.2 DEAC	1.500				-1.499	1.500	1
	1006:1.2 DEAC	1.500				-1.058	1.500	1
	1007:1.2 DEAC	1.500				-2.470	1.500	1
	1008:1.2 DEAC	1.500				-2.911	1.500	1
	1009:1.2 DEAC	1.500				-2.911	1.500	1
	1010:1.2 DEAC	1.500				-2.470	1.500	1
	1011:1.2 DEAC	1.500				-2.911	1.500	1
	1012:1.2 DEAC	1.500				-2.911	1.500	1
	1013:1.2 DEAC	1.500				-1.499	1.500	1
	1014:1.2 DEAC	1.500				-1.499	1.500	1
	1015:1.2 DEAC	1.500				-2.381	1.500	1
	1016:1.2 DEAC	1.500				-2.381	1.500	1
	1017:1.2 DEAC	1.500				-2.381	1.500	1
	1018:1.2 DEAC	1.500				-2.381	1.500	1
	1019:1.2 DEAC	1.500				-1.940	1.500	1
	1020:1.2 DEAC	1.500				-1.940	1.500	1
	1021:0.9 DEAC	1.500				-1.676	1.500	1
	1022:0.9 DEAC	1.500				-1.676	1.500	1
	1023:1.2 DEAC	1.500				-1.235	1.500	1
	1024:0.9 DEAC	1.500				-0.794	1.500	1
	1025:1 DEAD	1.500				-0.882	1.500	1
	1026:1 DEAD +	1.500				-1.764	1.500	1
	1027:1 DEAD +	1.500				-1.764	1.500	1
	1028:1 DEAD +	1.500				-1.543	1.500	1
	1029:1 DEAD +	1.500				-1.543	1.500	1
	1030:1 DEAD +	1.500				-1.411	1.500	1
	1031:1 DEAD +	1.500				-1.411	1.500	1
	1032:1 DEAD +	1.500				-2.205	1.500	1
	1033:1 DEAD +	1.500				-2.205	1.500	1
	1034:1 DEAD +	1.500				-2.205	1.500	1
	1035:1 DEAD +	1.500				-2.205	1.500	1
	1036:1 DEAD +	1.500				-1.543	1.500	1
	1037:1 DEAD +	1.500				-1.543	1.500	1
	1038:0.6 DEAC	1.500				-1.058	1.500	1
	1039:0.6 DEAC	1.500				-1.058	1.500	1
	1040:0.6 DEAC	1.500				-0.529	1.500	1
139	1:DEAD	1.000	11.013	1.000	3	-327.069	1.000	1
	2:LIVE	1.000	20.217	1.000	3	-512.867	1.000	1
	3:SNOW	1.000	76.361	1.000	3	-1.65E+3	1.000	1
	4:WIND+	1.000	61.635	1.000	3	-1.35E+3	1.000	1
	5:WIND-	1.000	954.936	1.000	1	-52.494	1.000	3
	1003:1.4 DEAC	1.000	15.418	1.000	3	-457.897	1.000	1
	1004:1.2 DEAC	1.000	23.324	1.000	3	-648.917	1.000	1

CONNECTED User: Brett Eisenhauer

Part

Job Title Learning Experience Sloping Awning

Ref

By Date 03-Mar-23 Chd

Client Capitol Awning

File Sloped Awning 6ft Analys Date/Time 17-Mar-2023 09:45

## Beam Combined Axial and Bending Stresses Summary Cont...

Beam	L/C	Length (in)	Max Comp			Max Tens		
			Stress (psi)	d (in)	Corner	Stress (psi)	d (in)	Corner
	1005:1.2 DEAC	1.000	51.396	1.000	3	-1.22E+3	1.000	1
	1006:1.2 DEAC	1.000	13.216	1.000	3	-392.483	1.000	1
	1007:1.2 DEAC	1.000	45.563	1.000	3	-1.21E+3	1.000	1
	1008:1.2 DEAC	1.000	76.381	1.000	3	-1.89E+3	1.000	1
	1009:1.2 DEAC	1.000	19.316	1.000	3	-735.602	1.000	1
	1010:1.2 DEAC	1.000	135.394	1.000	3	-3.03E+3	1.000	1
	1011:1.2 DEAC	1.000	166.211	1.000	3	-3.7E+3	1.000	1
	1012:1.2 DEAC	1.000	109.147	1.000	3	-2.55E+3	1.000	1
	1013:1.2 DEAC	1.000	44.033	1.000	3	-1.07E+3	1.000	1
	1014:1.2 DEAC	1.000	84.985	1.000	1	-13.031	1.000	3
	1015:1.2 DEAC	1.000	84.959	1.000	3	-2E+3	1.000	1
	1016:1.2 DEAC	1.000	306.019	1.000	1	-29.170	1.000	3
	1017:1.2 DEAC	1.000	113.031	1.000	3	-2.56E+3	1.000	1
	1018:1.2 DEAC	1.000				-260.664	1.000	1
	1019:1.2 DEAC	1.000	74.851	1.000	3	-1.74E+3	1.000	1
	1020:1.2 DEAC	1.000	562.452	1.000	1	-39.278	1.000	3
	1021:0.9 DEAC	1.000	71.547	1.000	3	-1.64E+3	1.000	1
	1022:0.9 DEAC	1.000	660.573	1.000	1	-42.582	1.000	3
	1023:1.2 DEAC	1.000	28.488	1.000	3	-721.730	1.000	1
	1024:0.9 DEAC	1.000	9.912	1.000	3	-294.362	1.000	1
	1025:1 DEAD	1.000	11.013	1.000	3	-327.069	1.000	1
	1026:1 DEAD +	1.000	87.374	1.000	3	-1.97E+3	1.000	1
	1027:1 DEAD +	1.000	31.230	1.000	3	-839.936	1.000	1
	1028:1 DEAD +	1.000	26.176	1.000	3	-711.720	1.000	1
	1029:1 DEAD +	1.000	68.284	1.000	3	-1.56E+3	1.000	1
	1030:1 DEAD +	1.000	47.994	1.000	3	-1.14E+3	1.000	1
	1031:1 DEAD +	1.000	245.892	1.000	1	-20.483	1.000	3
	1032:1 DEAD +	1.000	72.402	1.000	3	-1.72E+3	1.000	1
	1033:1 DEAD +	1.000	4.772	0.167	1	-13.319	0.417	3
	1034:1 DEAD +	1.000	114.510	1.000	3	-2.57E+3	1.000	1
	1035:1 DEAD +	1.000	28.914	1.000	3	-845.543	1.000	1
	1036:1 DEAD +	1.000	57.239	1.000	3	-1.34E+3	1.000	1
	1037:1 DEAD +	1.000	389.132	1.000	1	-28.357	1.000	3
	1038:0.6 DEAC	1.000	43.589	1.000	3	-1.01E+3	1.000	1
	1039:0.6 DEAC	1.000	376.720	1.000	1	-24.889	1.000	3
	1040:0.6 DEAC	1.000	6.608	1.000	3	-196.242	1.000	1
140	1:DEAD	37.500	160.596	0	2	-164.320	0	1
	2:LIVE	37.500	254.518	0	2	-258.242	0	1
	3:SNOW	37.500	827.440	0	2	-831.164	0	1
	4:WIND+	37.500	677.165	0	2	-680.889	0	1
	5:WIND-	37.500	483.739	0	1	-487.463	0	2
	1003:1.4 DEAC	37.500	224.835	0	2	-230.048	0	1
	1004:1.2 DEAC	37.500	319.974	0	2	-326.305	0	1
	1005:1.2 DEAC	37.500	606.436	0	2	-612.766	0	1

CONNECTED User: Brett Eisenhauer

Job Title Learning Experience Sloping Awning

Part

Ref

By Date 03-Mar-23 Chd

Client Capitol Awning

File Sloped Awning 6ft Analys Date/Time 17-Mar-2023 09:45

## Beam Combined Axial and Bending Stresses Summary Cont...

Beam	L/C	Length (in)	Max Comp			Max Tens		
			Stress (psi)	d (in)	Corner	Stress (psi)	d (in)	Corner
	1006:1.2 DEAC	37.500	192.715	0	2	-197.184	0	1
	1007:1.2 DEAC	37.500	599.944	0	2	-610.371	0	1
	1008:1.2 DEAC	37.500	938.527	0	2	-950.816	0	1
	1009:1.2 DEAC	37.500	356.212	0	2	-368.502	0	1
	1010:1.2 DEAC	37.500	1.52E+3	0	2	-1.53E+3	0	1
	1011:1.2 DEAC	37.500	1.86E+3	0	2	-1.87E+3	0	1
	1012:1.2 DEAC	37.500	1.27E+3	0	2	-1.29E+3	0	1
	1013:1.2 DEAC	37.500	531.298	0	2	-537.629	0	1
	1014:1.2 DEAC	37.500	44.685	0	1	-51.016	0	2
	1015:1.2 DEAC	37.500	997.140	0	2	-1.01E+3	0	1
	1016:1.2 DEAC	37.500	157.434	0	1	-167.489	0	2
	1017:1.2 DEAC	37.500	1.28E+3	0	2	-1.29E+3	0	1
	1018:1.2 DEAC	37.500	118.972	0	2	-129.027	0	1
	1019:1.2 DEAC	37.500	869.881	0	2	-878.074	0	1
	1020:1.2 DEAC	37.500	286.555	0	1	-294.748	0	2
	1021:0.9 DEAC	37.500	821.702	0	2	-828.778	0	1
	1022:0.9 DEAC	37.500	335.851	0	1	-342.927	0	2
	1023:1.2 DEAC	37.500	358.204	0	2	-363.417	0	1
	1024:0.9 DEAC	37.500	144.537	0	2	-147.888	0	1
	1025:1 DEAD	37.500	160.596	0	2	-164.320	0	1
	1026:1 DEAD +	37.500	988.036	0	2	-995.484	0	1
	1027:1 DEAD +	37.500	415.114	0	2	-422.562	0	1
	1028:1 DEAD +	37.500	351.485	0	2	-358.002	0	1
	1029:1 DEAD +	37.500	781.176	0	2	-787.693	0	1
	1030:1 DEAD +	37.500	566.895	0	2	-572.854	0	1
	1031:1 DEAD +	37.500	125.923	0	1	-131.882	0	2
	1032:1 DEAD +	37.500	859.359	0	2	-868.669	0	1
	1033:1 DEAD +	37.500	37.219	37.500	1	-28.154	37.500	2
	1034:1 DEAD +	37.500	1.29E+3	0	2	-1.3E+3	0	1
	1035:1 DEAD +	37.500	415.579	0	2	-424.889	0	1
	1036:1 DEAD +	37.500	668.470	0	2	-674.987	0	1
	1037:1 DEAD +	37.500	198.484	0	1	-205.001	0	2
	1038:0.6 DEAC	37.500	502.657	0	2	-507.126	0	1
	1039:0.6 DEAC	37.500	191.651	0	1	-196.120	0	2
	1040:0.6 DEAC	37.500	96.358	0	2	-98.592	0	1
141	1:DEAD	1.000	163.123	1.000	1	-63.857	1.000	3
	2:LIVE	1.000	267.007	1.000	1	-108.305	1.000	3
	3:SNOW	1.000	900.699	1.000	1	-379.440	1.000	3
	4:WIND+	1.000	734.485	1.000	1	-308.322	1.000	3
	5:WIND-	1.000	242.836	1.000	3	-553.677	1.000	1
	1003:1.4 DEAC	1.000	228.372	1.000	1	-89.400	1.000	3
	1004:1.2 DEAC	1.000	329.251	1.000	1	-130.781	1.000	3
	1005:1.2 DEAC	1.000	646.097	1.000	1	-266.348	1.000	3
	1006:1.2 DEAC	1.000	195.747	1.000	1	-76.629	1.000	3

CONNECTED User: Brett Eisenhauer

Part

Job Title Learning Experience Sloping Awning

Ref


By Date 03-Mar-23 Chd

Client Capitol Awning

File Sloped Awning 6ft Analys Date/Time 17-Mar-2023 09:45

## Beam Combined Axial and Bending Stresses Summary Cont...

Beam	L/C	Length (in)	Max Comp			Max Tens		
			Stress (psi)	d (in)	Corner	Stress (psi)	d (in)	Corner
	1007:1.2 DEAC	1.000	622.958	1.000	1	-249.917	1.000	3
	1008:1.2 DEAC	1.000	990.200	1.000	1	-404.078	1.000	3
	1009:1.2 DEAC	1.000	346.119	1.000	1	-128.499	1.000	3
	1010:1.2 DEAC	1.000	1.64E+3	1.000	1	-683.732	1.000	3
	1011:1.2 DEAC	1.000	2E+3	1.000	1	-837.893	1.000	3
	1012:1.2 DEAC	1.000	1.36E+3	1.000	1	-562.314	1.000	3
	1013:1.2 DEAC	1.000	562.990	1.000	1	-230.790	1.000	3
	1014:1.2 DEAC	1.000	44.789	1.000	3	-81.091	1.000	1
	1015:1.2 DEAC	1.000	1.06E+3	1.000	1	-439.104	1.000	3
	1016:1.2 DEAC	1.000	112.054	1.000	3	-224.426	1.000	1
	1017:1.2 DEAC	1.000	1.38E+3	1.000	1	-574.671	1.000	3
	1018:1.2 DEAC	1.000	97.460	0	1	-28.553	0	3
	1019:1.2 DEAC	1.000	930.232	1.000	1	-384.951	1.000	3
	1020:1.2 DEAC	1.000	166.207	1.000	3	-357.930	1.000	1
	1021:0.9 DEAC	1.000	881.295	1.000	1	-365.794	1.000	3
	1022:0.9 DEAC	1.000	185.364	1.000	3	-406.867	1.000	1
	1023:1.2 DEAC	1.000	375.887	1.000	1	-152.516	1.000	3
	1024:0.9 DEAC	1.000	146.810	1.000	1	-57.471	1.000	3
	1025:1 DEAD	1.000	163.123	1.000	1	-63.857	1.000	3
	1026:1 DEAD +	1.000	1.06E+3	1.000	1	-443.297	1.000	3
	1027:1 DEAD +	1.000	430.129	1.000	1	-172.162	1.000	3
	1028:1 DEAD +	1.000	363.378	1.000	1	-145.086	1.000	3
	1029:1 DEAD +	1.000	838.647	1.000	1	-348.437	1.000	3
	1030:1 DEAD +	1.000	603.814	1.000	1	-248.851	1.000	3
	1031:1 DEAD +	1.000	81.844	1.000	3	-169.084	1.000	1
	1032:1 DEAD +	1.000	914.241	1.000	1	-376.328	1.000	3
	1033:1 DEAD +	1.000	37.041	1.000	3	-51.880	1.000	1
	1034:1 DEAD +	1.000	1.39E+3	1.000	1	-579.678	1.000	3
	1035:1 DEAD +	1.000	423.389	1.000	1	-166.310	1.000	3
	1036:1 DEAD +	1.000	713.986	1.000	1	-295.099	1.000	3
	1037:1 DEAD +	1.000	118.270	1.000	3	-252.135	1.000	1
	1038:0.6 DEAC	1.000	538.564	1.000	1	-223.308	1.000	3
	1039:0.6 DEAC	1.000	107.387	1.000	3	-234.333	1.000	1
	1040:0.6 DEAC	1.000	97.874	1.000	1	-38.314	1.000	3
142	1:DEAD	15.073	179.672	15.073	1	-287.745	15.073	3
	2:LIVE	15.073	295.329	15.073	1	-467.403	15.073	3
	3:SNOW	15.073	1E+3	15.073	1	-1.56E+3	15.073	3
	4:WIND+	15.073	815.785	15.073	1	-1.28E+3	15.073	3
	5:WIND-	15.073	951.894	15.073	3	-618.361	15.073	1
	1003:1.4 DEAC	15.073	251.540	15.073	1	-402.844	15.073	3
	1004:1.2 DEAC	15.073	363.270	15.073	1	-578.996	15.073	3
	1005:1.2 DEAC	15.073	716.024	15.073	1	-1.13E+3	15.073	3
	1006:1.2 DEAC	15.073	215.606	15.073	1	-345.295	15.073	3
	1007:1.2 DEAC	15.073	688.132	15.073	1	-1.09E+3	15.073	3

	Job No <b>23-0005</b>	Sheet No <b>Pg. 16</b>	Rev
	Part		
CONNECTED User: Brett Eisenhauer	Ref		
Job Title Learning Experience Sloping Awning	By	Date 03-Mar-23	Chd
Client Capitol Awning	File Sloped Awning 6ft Analys	Date/Time 17-Mar-2023 09:45	

## Beam Combined Axial and Bending Stresses Summary Cont...

Beam	L/C	Length (in)	Max Comp			Max Tens		
			Stress (psi)	d (in)	Corner	Stress (psi)	d (in)	Corner
	1008:1.2 DEAC	15.073	1.1E+3	15.073	1	-1.73E+3	15.073	3
	1009:1.2 DEAC	15.073	378.951	15.073	1	-617.193	15.073	3
	1010:1.2 DEAC	15.073	1.82E+3	15.073	1	-2.85E+3	15.073	3
	1011:1.2 DEAC	15.073	2.22E+3	15.073	1	-3.48E+3	15.073	3
	1012:1.2 DEAC	15.073	1.51E+3	15.073	1	-2.37E+3	15.073	3
	1013:1.2 DEAC	15.073	623.499	15.073	1	-983.227	15.073	3
	1014:1.2 DEAC	15.073	130.653	15.073	3	-93.575	15.073	1
	1015:1.2 DEAC	15.073	1.18E+3	15.073	1	-1.85E+3	15.073	3
	1016:1.2 DEAC	15.073	372.898	15.073	3	-255.091	15.073	1
	1017:1.2 DEAC	15.073	1.53E+3	15.073	1	-2.4E+3	15.073	3
	1018:1.2 DEAC	15.073	97.663	15.073	1	-175.059	15.073	3
	1019:1.2 DEAC	15.073	1.03E+3	15.073	1	-1.62E+3	15.073	3
	1020:1.2 DEAC	15.073	606.600	15.073	3	-402.755	15.073	1
	1021:0.9 DEAC	15.073	977.490	15.073	1	-1.53E+3	15.073	3
	1022:0.9 DEAC	15.073	692.923	15.073	3	-456.657	15.073	1
	1023:1.2 DEAC	15.073	415.773	15.073	1	-657.958	15.073	3
	1024:0.9 DEAC	15.073	161.705	15.073	1	-258.971	15.073	3
	1025:1 DEAD	15.073	179.672	15.073	1	-287.745	15.073	3
	1026:1 DEAD +	15.073	1.18E+3	15.073	1	-1.85E+3	15.073	3
	1027:1 DEAD +	15.073	475.000	15.073	1	-755.149	15.073	3
	1028:1 DEAD +	15.073	401.168	15.073	1	-638.298	15.073	3
	1029:1 DEAD +	15.073	930.299	15.073	1	-1.46E+3	15.073	3
	1030:1 DEAD +	15.073	669.143	15.073	1	-1.05E+3	15.073	3
	1031:1 DEAD +	15.073	283.391	15.073	3	-191.345	15.073	1
	1032:1 DEAD +	15.073	1.01E+3	15.073	1	-1.6E+3	15.073	3
	1033:1 DEAD +	15.073	75.623	15.073	3	-62.603	15.073	1
	1034:1 DEAD +	15.073	1.54E+3	15.073	1	-2.42E+3	15.073	3
	1035:1 DEAD +	15.073	466.528	15.073	1	-746.312	15.073	3
	1036:1 DEAD +	15.073	791.511	15.073	1	-1.24E+3	15.073	3
	1037:1 DEAD +	15.073	426.175	15.073	3	-284.099	15.073	1
	1038:0.6 DEAC	15.073	597.274	15.073	1	-938.166	15.073	3
	1039:0.6 DEAC	15.073	398.489	15.073	3	-263.214	15.073	1
	1040:0.6 DEAC	15.073	107.803	15.073	1	-172.647	15.073	3
143	1:DEAD	1.000	188.435	0	1	-316.561	0	3
	2:LIVE	1.000	311.239	0	1	-516.671	0	3
	3:SNOW	1.000	1.06E+3	0	1	-1.74E+3	0	3
	4:WIND+	1.000	863.859	0	1	-1.42E+3	0	3
	5:WIND-	1.000	1.06E+3	0	3	-658.915	0	1
	1003:1.4 DEAC	1.000	263.809	0	1	-443.186	0	3
	1004:1.2 DEAC	1.000	381.741	0	1	-638.209	0	3
	1005:1.2 DEAC	1.000	756.295	0	1	-1.25E+3	0	3
	1006:1.2 DEAC	1.000	226.122	0	1	-379.873	0	3
	1007:1.2 DEAC	1.000	724.105	0	1	-1.21E+3	0	3
	1008:1.2 DEAC	1.000	1.16E+3	0	1	-1.92E+3	0	3

CONNECTED User: Brett Eisenhauer

Job Title Learning Experience Sloping Awning

Part

Ref

By Date 03-Mar-23 Chd

Client Capitol Awning

File Sloped Awning 6ft Analys Date/Time 17-Mar-2023 09:45

## Beam Combined Axial and Bending Stresses Summary Cont...

Beam	L/C	Length (in)	Max Comp			Max Tens		
			Stress (psi)	d (in)	Corner	Stress (psi)	d (in)	Corner
	1009:1.2 DEAC	1.000	394.647	0	1	-674.448	0	3
	1010:1.2 DEAC	1.000	1.92E+3	0	1	-3.16E+3	0	3
	1011:1.2 DEAC	1.000	2.35E+3	0	1	-3.87E+3	0	3
	1012:1.2 DEAC	1.000	1.59E+3	0	1	-2.63E+3	0	3
	1013:1.2 DEAC	1.000	658.051	0	1	-1.09E+3	0	3
	1014:1.2 DEAC	1.000	152.226	0	3	-103.336	0	1
	1015:1.2 DEAC	1.000	1.25E+3	0	1	-2.06E+3	0	3
	1016:1.2 DEAC	1.000	425.990	0	3	-277.174	0	1
	1017:1.2 DEAC	1.000	1.62E+3	0	1	-2.67E+3	0	3
	1018:1.2 DEAC	1.000	97.380	0	1	-184.346	0	3
	1019:1.2 DEAC	1.000	1.09E+3	0	1	-1.8E+3	0	3
	1020:1.2 DEAC	1.000	684.326	0	3	-432.793	0	1
	1021:0.9 DEAC	1.000	1.03E+3	0	1	-1.7E+3	0	3
	1022:0.9 DEAC	1.000	779.294	0	3	-489.324	0	1
	1023:1.2 DEAC	1.000	438.191	0	1	-727.342	0	3
	1024:0.9 DEAC	1.000	169.591	0	1	-284.905	0	3
	1025:1 DEAD	1.000	188.435	0	1	-316.561	0	3
	1026:1 DEAD +	1.000	1.25E+3	0	1	-2.05E+3	0	3
	1027:1 DEAD +	1.000	499.674	0	1	-833.232	0	3
	1028:1 DEAD +	1.000	421.864	0	1	-704.065	0	3
	1029:1 DEAD +	1.000	983.694	0	1	-1.62E+3	0	3
	1030:1 DEAD +	1.000	706.750	0	1	-1.17E+3	0	3
	1031:1 DEAD +	1.000	321.958	0	3	-206.914	0	1
	1032:1 DEAD +	1.000	1.07E+3	0	1	-1.77E+3	0	3
	1033:1 DEAD +	1.000	94.085	0	3	-72.322	0	1
	1034:1 DEAD +	1.000	1.63E+3	0	1	-2.68E+3	0	3
	1035:1 DEAD +	1.000	489.508	0	1	-821.419	0	3
	1036:1 DEAD +	1.000	836.329	0	1	-1.38E+3	0	3
	1037:1 DEAD +	1.000	481.588	0	3	-305.751	0	1
	1038:0.6 DEAC	1.000	631.376	0	1	-1.04E+3	0	3
	1039:0.6 DEAC	1.000	448.583	0	3	-282.288	0	1
	1040:0.6 DEAC	1.000	113.061	0	1	-189.937	0	3
144	1:DEAD	1.144				-130.278	1.144	1
	2:LIVE	1.144				-207.770	1.144	1
	3:SNOW	1.144				-680.469	1.144	1
	4:WIND+	1.144				-556.482	1.144	1
	5:WIND-	1.144	404.415	1.144	1			
	1003:1.4 DEAC	1.144				-182.389	1.144	1
	1004:1.2 DEAC	1.144				-260.218	1.144	1
	1005:1.2 DEAC	1.144				-496.568	1.144	1
	1006:1.2 DEAC	1.144				-156.334	1.144	1
	1007:1.2 DEAC	1.144				-488.765	1.144	1
	1008:1.2 DEAC	1.144				-767.006	1.144	1
	1009:1.2 DEAC	1.144				-286.558	1.144	1

CONNECTED User: Brett Eisenhauer

Job Title Learning Experience Sloping Awning

Part

Ref

By

Date 03-Mar-23

Chd

Client Capitol Awning

File Sloped Awning 6ft Analys

Date/Time 17-Mar-2023 09:45

## Beam Combined Axial and Bending Stresses Summary Cont...

Beam	L/C	Length (in)	Max Comp			Max Tens		
			Stress (psi)	d (in)	Corner	Stress (psi)	d (in)	Corner
	1010:1.2 DEAC	1.144				-1.25E+3	1.144	1
	1011:1.2 DEAC	1.144				-1.52E+3	1.144	1
	1012:1.2 DEAC	1.144				-1.04E+3	1.144	1
	1013:1.2 DEAC	1.144				-434.575	1.144	1
	1014:1.2 DEAC	1.144	45.874	1.144	1			
	1015:1.2 DEAC	1.144				-816.700	1.144	1
	1016:1.2 DEAC	1.144	144.196	1.144	1			
	1017:1.2 DEAC	1.144				-1.05E+3	1.144	1
	1018:1.2 DEAC	1.144				-96.209	0	1
	1019:1.2 DEAC	1.144				-712.816	1.144	1
	1020:1.2 DEAC	1.144	248.081	1.144	1			
	1021:0.9 DEAC	1.144				-673.732	1.144	1
	1022:0.9 DEAC	1.144	287.164	1.144	1			
	1023:1.2 DEAC	1.144				-292.427	1.144	1
	1024:0.9 DEAC	1.144				-117.250	1.144	1
	1025:1 DEAD	1.144				-130.278	1.144	1
	1026:1 DEAD +	1.144				-810.747	1.144	1
	1027:1 DEAD +	1.144				-338.048	1.144	1
	1028:1 DEAD +	1.144				-286.105	1.144	1
	1029:1 DEAD +	1.144				-640.629	1.144	1
	1030:1 DEAD +	1.144				-464.167	1.144	1
	1031:1 DEAD +	1.144	112.371	1.144	1			
	1032:1 DEAD +	1.144				-703.467	1.144	1
	1033:1 DEAD +	1.144	17.206	1.144	1			
	1034:1 DEAD +	1.144				-1.06E+3	1.144	1
	1035:1 DEAD +	1.144				-337.319	1.144	1
	1036:1 DEAD +	1.144				-547.639	1.144	1
	1037:1 DEAD +	1.144	173.033	1.144	1			
	1038:0.6 DEAC	1.144				-412.056	1.144	1
	1039:0.6 DEAC	1.144	164.482	1.144	1			
	1040:0.6 DEAC	1.144				-78.167	1.144	1
145	1:DEAD	1.000	172.126	0	3	-465.070	0	1
	2:LIVE	1.000	287.407	0	3	-743.640	0	1
	3:SNOW	1.000	990.621	0	3	-2.44E+3	0	1
	4:WIND+	1.000	806.171	0	3	-2E+3	0	1
	5:WIND-	1.000	1.46E+3	0	1	-623.313	0	3
	1003:1.4 DEAC	1.000	240.976	0	3	-651.097	0	1
	1004:1.2 DEAC	1.000	350.254	0	3	-929.903	0	1
	1005:1.2 DEAC	1.000	701.861	0	3	-1.78E+3	0	1
	1006:1.2 DEAC	1.000	206.551	0	3	-558.084	0	1
	1007:1.2 DEAC	1.000	666.401	0	3	-1.75E+3	0	1
	1008:1.2 DEAC	1.000	1.07E+3	0	3	-2.75E+3	0	1
	1009:1.2 DEAC	1.000	354.745	0	3	-1.02E+3	0	1
	1010:1.2 DEAC	1.000	1.79E+3	0	3	-4.47E+3	0	1

CONNECTED User: Brett Eisenhauer

Part

Job Title Learning Experience Sloping Awning

Ref

By

Date 03-Mar-23

Chd

Client Capitol Awning

File Sloped Awning 6ft Analys

Date/Time 17-Mar-2023 09:45

## Beam Combined Axial and Bending Stresses Summary Cont...

Beam	L/C	Length (in)	Max Comp			Max Tens		
			Stress (psi)	d (in)	Corner	Stress (psi)	d (in)	Corner
	1011:1.2 DEAC	1.000	2.19E+3	0	3	-5.47E+3	0	1
	1012:1.2 DEAC	1.000	1.48E+3	0	3	-3.74E+3	0	1
	1013:1.2 DEAC	1.000	609.636	0	3	-1.56E+3	0	1
	1014:1.2 DEAC	1.000	170.448	0	1	-105.106	0	3
	1015:1.2 DEAC	1.000	1.16E+3	0	3	-2.93E+3	0	1
	1016:1.2 DEAC	1.000	527.161	0	1	-273.059	0	3
	1017:1.2 DEAC	1.000	1.51E+3	0	3	-3.78E+3	0	1
	1018:1.2 DEAC	1.000	78.548	0	3	-322.478	0	1
	1019:1.2 DEAC	1.000	1.01E+3	0	3	-2.56E+3	0	1
	1020:1.2 DEAC	1.000	898.980	0	1	-416.763	0	3
	1021:0.9 DEAC	1.000	961.084	0	3	-2.42E+3	0	1
	1022:0.9 DEAC	1.000	1.04E+3	0	1	-468.400	0	3
	1023:1.2 DEAC	1.000	404.675	0	3	-1.05E+3	0	1
	1024:0.9 DEAC	1.000	154.913	0	3	-418.563	0	1
	1025:1 DEAD	1.000	172.126	0	3	-465.070	0	1
	1026:1 DEAD +	1.000	1.16E+3	0	3	-2.91E+3	0	1
	1027:1 DEAD +	1.000	459.532	0	3	-1.21E+3	0	1
	1028:1 DEAD +	1.000	387.681	0	3	-1.02E+3	0	1
	1029:1 DEAD +	1.000	915.091	0	3	-2.3E+3	0	1
	1030:1 DEAD +	1.000	655.828	0	3	-1.66E+3	0	1
	1031:1 DEAD +	1.000	409.169	0	1	-201.862	0	3
	1032:1 DEAD +	1.000	992.309	0	3	-2.52E+3	0	1
	1033:1 DEAD +	1.000	69.999	0	1	-79.804	0	3
	1034:1 DEAD +	1.000	1.52E+3	0	3	-3.8E+3	0	1
	1035:1 DEAD +	1.000	447.606	0	3	-1.2E+3	0	1
	1036:1 DEAD +	1.000	776.754	0	3	-1.96E+3	0	1
	1037:1 DEAD +	1.000	627.728	0	1	-295.359	0	3
	1038:0.6 DEAC	1.000	586.978	0	3	-1.48E+3	0	1
	1039:0.6 DEAC	1.000	595.197	0	1	-270.713	0	3
	1040:0.6 DEAC	1.000	103.275	0	3	-279.042	0	1
146	1:DEAD	1.000	213.210	0	1	-527.643	0	3
	2:LIVE	1.000	357.095	0	1	-848.122	0	3
	3:SNOW	1.000	1.23E+3	0	1	-2.8E+3	0	3
	4:WIND+	1.000	1E+3	0	1	-2.29E+3	0	3
	5:WIND-	1.000	1.68E+3	0	3	-779.595	0	1
	1003:1.4 DEAC	1.000	298.495	0	1	-738.700	0	3
	1004:1.2 DEAC	1.000	434.400	0	1	-1.06E+3	0	3
	1005:1.2 DEAC	1.000	873.249	0	1	-2.03E+3	0	3
	1006:1.2 DEAC	1.000	255.853	0	1	-633.171	0	3
	1007:1.2 DEAC	1.000	827.205	0	1	-1.99E+3	0	3
	1008:1.2 DEAC	1.000	1.33E+3	0	1	-3.14E+3	0	3
	1009:1.2 DEAC	1.000	437.408	0	1	-1.15E+3	0	3
	1010:1.2 DEAC	1.000	2.23E+3	0	1	-5.12E+3	0	3
	1011:1.2 DEAC	1.000	2.73E+3	0	1	-6.26E+3	0	3

CONNECTED User: Brett Eisenhauer

Job Title Learning Experience Sloping Awning

Part

Ref

By Date 03-Mar-23 Chd

Client Capitol Awning

File Sloped Awning 6ft Analys Date/Time 17-Mar-2023 09:45

## Beam Combined Axial and Bending Stresses Summary Cont...

Beam	L/C	Length (in)	Max Comp			Max Tens		
			Stress (psi)	d (in)	Corner	Stress (psi)	d (in)	Corner
	1012:1.2 DEAC	1.000	1.84E+3	0	1	-4.28E+3	0	3
	1013:1.2 DEAC	1.000	758.141	0	1	-1.78E+3	0	3
	1014:1.2 DEAC	1.000	208.662	0	3	-133.945	0	1
	1015:1.2 DEAC	1.000	1.44E+3	0	1	-3.35E+3	0	3
	1016:1.2 DEAC	1.000	626.433	0	3	-345.195	0	1
	1017:1.2 DEAC	1.000	1.88E+3	0	1	-4.32E+3	0	3
	1018:1.2 DEAC	1.000	93.654	0	1	-351.029	0	3
	1019:1.2 DEAC	1.000	1.26E+3	0	1	-2.92E+3	0	3
	1020:1.2 DEAC	1.000	1.05E+3	0	3	-523.742	0	1
	1021:0.9 DEAC	1.000	1.2E+3	0	1	-2.77E+3	0	3
	1022:0.9 DEAC	1.000	1.21E+3	0	3	-587.706	0	1
	1023:1.2 DEAC	1.000	502.811	0	1	-1.19E+3	0	3
	1024:0.9 DEAC	1.000	191.889	0	1	-474.878	0	3
	1025:1 DEAD	1.000	213.210	0	1	-527.643	0	3
	1026:1 DEAD +	1.000	1.45E+3	0	1	-3.33E+3	0	3
	1027:1 DEAD +	1.000	570.306	0	1	-1.38E+3	0	3
	1028:1 DEAD +	1.000	481.032	0	1	-1.16E+3	0	3
	1029:1 DEAD +	1.000	1.14E+3	0	1	-2.63E+3	0	3
	1030:1 DEAD +	1.000	815.957	0	1	-1.9E+3	0	3
	1031:1 DEAD +	1.000	482.557	0	3	-254.547	0	1
	1032:1 DEAD +	1.000	1.23E+3	0	1	-2.88E+3	0	3
	1033:1 DEAD +	1.000	99.015	0	3	-103.664	0	1
	1034:1 DEAD +	1.000	1.89E+3	0	1	-4.35E+3	0	3
	1035:1 DEAD +	1.000	554.609	0	1	-1.37E+3	0	3
	1036:1 DEAD +	1.000	966.643	0	1	-2.25E+3	0	3
	1037:1 DEAD +	1.000	735.106	0	3	-371.486	0	1
	1038:0.6 DEAC	1.000	730.673	0	1	-1.69E+3	0	3
	1039:0.6 DEAC	1.000	693.614	0	3	-339.831	0	1
	1040:0.6 DEAC	1.000	127.926	0	1	-316.586	0	3
147	1:DEAD	15.073	184.227	0	1	-498.754	0	3
	2:LIVE	15.073	308.811	0	1	-799.932	0	3
	3:SNOW	15.073	1.07E+3	0	1	-2.64E+3	0	3
	4:WIND+	15.073	869.438	0	1	-2.16E+3	0	3
	5:WIND-	15.073	1.58E+3	0	3	-675.401	0	1
	1003:1.4 DEAC	15.073	257.918	0	1	-698.255	0	3
	1004:1.2 DEAC	15.073	375.478	0	1	-998.471	0	3
	1005:1.2 DEAC	15.073	755.459	0	1	-1.92E+3	0	3
	1006:1.2 DEAC	15.073	221.072	0	1	-598.505	0	3
	1007:1.2 DEAC	15.073	715.170	0	1	-1.88E+3	0	3
	1008:1.2 DEAC	15.073	1.15E+3	0	1	-2.96E+3	0	3
	1009:1.2 DEAC	15.073	377.469	0	1	-1.09E+3	0	3
	1010:1.2 DEAC	15.073	1.93E+3	0	1	-4.82E+3	0	3
	1011:1.2 DEAC	15.073	2.37E+3	0	1	-5.9E+3	0	3
	1012:1.2 DEAC	15.073	1.59E+3	0	1	-4.03E+3	0	3

CONNECTED User: Brett Eisenhauer

Job Title Learning Experience Sloping Awning

Part

Ref

By

Date 03-Mar-23

Chd

Client Capitol Awning

File Sloped Awning 6ft Analys

Date/Time 17-Mar-2023 09:45

## Beam Combined Axial and Bending Stresses Summary Cont...

Beam	L/C	Length (in)	Max Comp			Max Tens		
			Stress (psi)	d (in)	Corner	Stress (psi)	d (in)	Corner
	1013:1.2 DEAC	15.073	655.791	0	1	-1.68E+3	0	3
	1014:1.2 DEAC	15.073	191.183	0	3	-116.628	0	1
	1015:1.2 DEAC	15.073	1.24E+3	0	1	-3.15E+3	0	3
	1016:1.2 DEAC	15.073	580.904	0	3	-299.924	0	1
	1017:1.2 DEAC	15.073	1.62E+3	0	1	-4.07E+3	0	3
	1018:1.2 DEAC	15.073	80.057	0	1	-337.689	0	3
	1019:1.2 DEAC	15.073	1.09E+3	0	1	-2.75E+3	0	3
	1020:1.2 DEAC	15.073	980.870	0	3	-454.329	0	1
	1021:0.9 DEAC	15.073	1.04E+3	0	1	-2.6E+3	0	3
	1022:0.9 DEAC	15.073	1.13E+3	0	3	-509.597	0	1
	1023:1.2 DEAC	15.073	434.827	0	1	-1.13E+3	0	3
	1024:0.9 DEAC	15.073	165.804	0	1	-448.878	0	3
	1025:1 DEAD	15.073	184.227	0	1	-498.754	0	3
	1026:1 DEAD +	15.073	1.25E+3	0	1	-3.14E+3	0	3
	1027:1 DEAD +	15.073	493.038	0	1	-1.3E+3	0	3
	1028:1 DEAD +	15.073	415.835	0	1	-1.1E+3	0	3
	1029:1 DEAD +	15.073	985.806	0	1	-2.48E+3	0	3
	1030:1 DEAD +	15.073	705.890	0	1	-1.79E+3	0	3
	1031:1 DEAD +	15.073	448.871	0	3	-221.014	0	1
	1032:1 DEAD +	15.073	1.07E+3	0	1	-2.72E+3	0	3
	1033:1 DEAD +	15.073	85.828	0	3	-90.716	0	1
	1034:1 DEAD +	15.073	1.64E+3	0	1	-4.09E+3	0	3
	1035:1 DEAD +	15.073	479.255	0	1	-1.29E+3	0	3
	1036:1 DEAD +	15.073	836.305	0	1	-2.12E+3	0	3
	1037:1 DEAD +	15.073	685.777	0	3	-322.324	0	1
	1038:0.6 DEAC	15.073	632.199	0	1	-1.59E+3	0	3
	1039:0.6 DEAC	15.073	648.373	0	3	-294.705	0	1
	1040:0.6 DEAC	15.073	110.536	0	1	-299.252	0	3
148	1:DEAD	1.000	223.189	1.000	1	-517.664	1.000	3
	2:LIVE	1.000	373.726	1.000	1	-831.491	1.000	3
	3:SNOW	1.000	1.29E+3	1.000	1	-2.75E+3	1.000	3
	4:WIND+	1.000	1.05E+3	1.000	1	-2.24E+3	1.000	3
	5:WIND-	1.000	1.65E+3	1.000	3	-815.518	1.000	1
	1003:1.4 DEAC	1.000	312.465	1.000	1	-724.730	1.000	3
	1004:1.2 DEAC	1.000	454.690	1.000	1	-1.04E+3	1.000	3
	1005:1.2 DEAC	1.000	913.829	1.000	1	-1.99E+3	1.000	3
	1006:1.2 DEAC	1.000	267.827	1.000	1	-621.197	1.000	3
	1007:1.2 DEAC	1.000	865.789	1.000	1	-1.95E+3	1.000	3
	1008:1.2 DEAC	1.000	1.39E+3	1.000	1	-3.07E+3	1.000	3
	1009:1.2 DEAC	1.000	458.030	1.000	1	-1.13E+3	1.000	3
	1010:1.2 DEAC	1.000	2.34E+3	1.000	1	-5.01E+3	1.000	3
	1011:1.2 DEAC	1.000	2.86E+3	1.000	1	-6.14E+3	1.000	3
	1012:1.2 DEAC	1.000	1.93E+3	1.000	1	-4.19E+3	1.000	3
	1013:1.2 DEAC	1.000	793.399	1.000	1	-1.74E+3	1.000	3

CONNECTED User: Brett Eisenhauer

Job Title Learning Experience Sloping Awning

Part

Ref


By Date 03-Mar-23 Chd

Client Capitol Awning

File Sloped Awning 6ft Analys Date/Time 17-Mar-2023 09:45

## Beam Combined Axial and Bending Stresses Summary Cont...

Beam	L/C	Length (in)	Max Comp			Max Tens		
			Stress (psi)	d (in)	Corner	Stress (psi)	d (in)	Corner
	1014:1.2 DEAC	1.000	202.674	1.000	3	-139.932	1.000	1
	1015:1.2 DEAC	1.000	1.51E+3	1.000	1	-3.28E+3	1.000	3
	1016:1.2 DEAC	1.000	610.800	1.000	3	-360.828	1.000	1
	1017:1.2 DEAC	1.000	1.96E+3	1.000	1	-4.24E+3	1.000	3
	1018:1.2 DEAC	1.000	98.311	1.000	1	-346.372	1.000	3
	1019:1.2 DEAC	1.000	1.32E+3	1.000	1	-2.86E+3	1.000	3
	1020:1.2 DEAC	1.000	1.03E+3	1.000	3	-547.691	1.000	1
	1021:0.9 DEAC	1.000	1.25E+3	1.000	1	-2.71E+3	1.000	3
	1022:0.9 DEAC	1.000	1.18E+3	1.000	3	-614.648	1.000	1
	1023:1.2 DEAC	1.000	526.228	1.000	1	-1.17E+3	1.000	3
	1024:0.9 DEAC	1.000	200.870	1.000	1	-465.898	1.000	3
	1025:1 DEAD	1.000	223.189	1.000	1	-517.664	1.000	3
	1026:1 DEAD +	1.000	1.52E+3	1.000	1	-3.26E+3	1.000	3
	1027:1 DEAD +	1.000	596.915	1.000	1	-1.35E+3	1.000	3
	1028:1 DEAD +	1.000	503.484	1.000	1	-1.14E+3	1.000	3
	1029:1 DEAD +	1.000	1.19E+3	1.000	1	-2.58E+3	1.000	3
	1030:1 DEAD +	1.000	853.875	1.000	1	-1.86E+3	1.000	3
	1031:1 DEAD +	1.000	470.981	1.000	3	-266.122	1.000	1
	1032:1 DEAD +	1.000	1.29E+3	1.000	1	-2.82E+3	1.000	3
	1033:1 DEAD +	1.000	94.525	1.000	3	-108.155	1.000	1
	1034:1 DEAD +	1.000	1.98E+3	1.000	1	-4.26E+3	1.000	3
	1035:1 DEAD +	1.000	580.553	1.000	1	-1.34E+3	1.000	3
	1036:1 DEAD +	1.000	1.01E+3	1.000	1	-2.2E+3	1.000	3
	1037:1 DEAD +	1.000	718.143	1.000	3	-388.449	1.000	1
	1038:0.6 DEAC	1.000	764.600	1.000	1	-1.66E+3	1.000	3
	1039:0.6 DEAC	1.000	678.047	1.000	3	-355.397	1.000	1
	1040:0.6 DEAC	1.000	133.913	1.000	1	-310.598	1.000	3
149	1:DEAD	14.073	182.881	14.073	1	-477.260	14.073	3
	2:LIVE	14.073	306.739	14.073	1	-764.406	14.073	3
	3:SNOW	14.073	1.06E+3	14.073	1	-2.52E+3	14.073	3
	4:WIND+	14.073	864.099	14.073	1	-2.06E+3	14.073	3
	5:WIND-	14.073	1.5E+3	14.073	3	-671.737	14.073	1
	1003:1.4 DEAC	14.073	256.034	14.073	1	-668.163	14.073	3
	1004:1.2 DEAC	14.073	372.827	14.073	1	-954.915	14.073	3
	1005:1.2 DEAC	14.073	750.593	14.073	1	-1.83E+3	14.073	3
	1006:1.2 DEAC	14.073	219.457	14.073	1	-572.711	14.073	3
	1007:1.2 DEAC	14.073	710.240	14.073	1	-1.8E+3	14.073	3
	1008:1.2 DEAC	14.073	1.14E+3	14.073	1	-2.82E+3	14.073	3
	1009:1.2 DEAC	14.073	374.371	14.073	1	-1.04E+3	14.073	3
	1010:1.2 DEAC	14.073	1.92E+3	14.073	1	-4.6E+3	14.073	3
	1011:1.2 DEAC	14.073	2.35E+3	14.073	1	-5.63E+3	14.073	3
	1012:1.2 DEAC	14.073	1.58E+3	14.073	1	-3.85E+3	14.073	3
	1013:1.2 DEAC	14.073	651.507	14.073	1	-1.6E+3	14.073	3
	1014:1.2 DEAC	14.073	179.315	14.073	3	-116.411	14.073	1

	Job No <b>23-0005</b>	Sheet No <b>Pg. 23</b>	Rev
	Part		
CONNECTED User: Brett Eisenhauer	Ref		
Job Title Learning Experience Sloping Awning	By	Date 03-Mar-23	Chd
Client Capitol Awning	File Sloped Awning 6ft Analys	Date/Time 17-Mar-2023 09:45	

## Beam Combined Axial and Bending Stresses Summary Cont...

Beam	L/C	Length (in)	Max Comp			Max Tens		
			Stress (psi)	d (in)	Corner	Stress (psi)	d (in)	Corner
	1015:1.2 DEAC	14.073	1.24E+3	14.073	1	-3.01E+3	14.073	3
	1016:1.2 DEAC	14.073	549.138	14.073	3	-298.910	14.073	1
	1017:1.2 DEAC	14.073	1.61E+3	14.073	1	-3.89E+3	14.073	3
	1018:1.2 DEAC	14.073	78.856	14.073	1	-326.660	14.073	3
	1019:1.2 DEAC	14.073	1.08E+3	14.073	1	-2.63E+3	14.073	3
	1020:1.2 DEAC	14.073	931.341	14.073	3	-452.280	14.073	1
	1021:0.9 DEAC	14.073	1.03E+3	14.073	1	-2.49E+3	14.073	3
	1022:0.9 DEAC	14.073	1.07E+3	14.073	3	-507.144	14.073	1
	1023:1.2 DEAC	14.073	431.911	14.073	1	-1.08E+3	14.073	3
	1024:0.9 DEAC	14.073	164.593	14.073	1	-429.534	14.073	3
	1025:1 DEAD	14.073	182.881	14.073	1	-477.260	14.073	3
	1026:1 DEAD +	14.073	1.25E+3	14.073	1	-2.99E+3	14.073	3
	1027:1 DEAD +	14.073	489.620	14.073	1	-1.24E+3	14.073	3
	1028:1 DEAD +	14.073	412.935	14.073	1	-1.05E+3	14.073	3
	1029:1 DEAD +	14.073	979.584	14.073	1	-2.36E+3	14.073	3
	1030:1 DEAD +	14.073	701.340	14.073	1	-1.71E+3	14.073	3
	1031:1 DEAD +	14.073	425.172	14.073	3	-220.161	14.073	1
	1032:1 DEAD +	14.073	1.06E+3	14.073	1	-2.59E+3	14.073	3
	1033:1 DEAD +	14.073	77.475	14.073	3	-90.868	14.073	1
	1034:1 DEAD +	14.073	1.63E+3	14.073	1	-3.91E+3	14.073	3
	1035:1 DEAD +	14.073	475.781	14.073	1	-1.24E+3	14.073	3
	1036:1 DEAD +	14.073	830.955	14.073	1	-2.02E+3	14.073	3
	1037:1 DEAD +	14.073	650.780	14.073	3	-320.922	14.073	1
	1038:0.6 DEAC	14.073	628.188	14.073	1	-1.52E+3	14.073	3
	1039:0.6 DEAC	14.073	616.076	14.073	3	-293.314	14.073	1
	1040:0.6 DEAC	14.073	109.729	14.073	1	-286.356	14.073	3
150	1:DEAD	1.000	28.950	1.000	3	-232.703	1.000	1
	2:LIVE	1.000	33.961	1.000	3	-355.788	1.000	1
	3:SNOW	1.000	64.527	1.000	3	-1.11E+3	1.000	1
	4:WIND+	1.000	56.509	1.000	3	-909.675	1.000	1
	5:WIND-	1.000	616.589	1.000	1	-5.624	1.000	3
	1003:1.4 DEAC	1.000	40.531	1.000	3	-325.784	1.000	1
	1004:1.2 DEAC	1.000	51.721	1.000	3	-457.137	1.000	1
	1005:1.2 DEAC	1.000	67.004	1.000	3	-832.549	1.000	1
	1006:1.2 DEAC	1.000	34.741	1.000	3	-279.243	1.000	1
	1007:1.2 DEAC	1.000	89.078	1.000	3	-848.505	1.000	1
	1008:1.2 DEAC	1.000	117.333	1.000	3	-1.3E+3	1.000	1
	1009:1.2 DEAC	1.000	86.267	1.000	3	-540.210	1.000	1
	1010:1.2 DEAC	1.000	137.983	1.000	3	-2.05E+3	1.000	1
	1011:1.2 DEAC	1.000	166.238	1.000	3	-2.5E+3	1.000	1
	1012:1.2 DEAC	1.000	135.171	1.000	3	-1.74E+3	1.000	1
	1013:1.2 DEAC	1.000	62.995	1.000	3	-734.081	1.000	1
	1014:1.2 DEAC	1.000	35.361	0	1			
	1015:1.2 DEAC	1.000	108.231	1.000	3	-1.37E+3	1.000	1

CONNECTED User: Brett Eisenhauer

Job Title Learning Experience Sloping Awning

Part

Ref

By Date 03-Mar-23 Chd

Client Capitol Awning

File Sloped Awning 6ft Analys Date/Time 17-Mar-2023 09:45

## Beam Combined Axial and Bending Stresses Summary Cont...

Beam	L/C	Length (in)	Max Comp			Max Tens		
			Stress (psi)	d (in)	Corner	Stress (psi)	d (in)	Corner
	1016:1.2 DEAC	1.000	167.444	0	1			
	1017:1.2 DEAC	1.000	123.513	1.000	3	-1.74E+3	1.000	1
	1018:1.2 DEAC	1.000	61.380	1.000	3	-215.960	1.000	1
	1019:1.2 DEAC	1.000	91.250	1.000	3	-1.19E+3	1.000	1
	1020:1.2 DEAC	1.000	340.145	0	1			
	1021:0.9 DEAC	1.000	82.565	1.000	3	-1.12E+3	1.000	1
	1022:0.9 DEAC	1.000	407.500	0	1			
	1023:1.2 DEAC	1.000	47.646	1.000	3	-500.566	1.000	1
	1024:0.9 DEAC	1.000	26.055	1.000	3	-209.432	1.000	1
	1025:1 DEAD	1.000	28.950	1.000	3	-232.703	1.000	1
	1026:1 DEAD +	1.000	93.477	1.000	3	-1.34E+3	1.000	1
	1027:1 DEAD +	1.000	62.912	1.000	3	-588.491	1.000	1
	1028:1 DEAD +	1.000	54.421	1.000	3	-499.544	1.000	1
	1029:1 DEAD +	1.000	77.345	1.000	3	-1.06E+3	1.000	1
	1030:1 DEAD +	1.000	62.856	1.000	3	-778.507	1.000	1
	1031:1 DEAD +	1.000	141.221	0	1			
	1032:1 DEAD +	1.000	96.803	1.000	3	-1.18E+3	1.000	1
	1033:1 DEAD +	1.000	50.204	1.000	3	-37.102	1.000	1
	1034:1 DEAD +	1.000	119.727	1.000	3	-1.74E+3	1.000	1
	1035:1 DEAD +	1.000	73.128	1.000	3	-600.219	1.000	1
	1036:1 DEAD +	1.000	71.332	1.000	3	-914.959	1.000	1
	1037:1 DEAD +	1.000	232.657	0	1			
	1038:0.6 DEAC	1.000	51.276	1.000	3	-685.426	1.000	1
	1039:0.6 DEAC	1.000	231.029	0	1			
	1040:0.6 DEAC	1.000	17.370	1.000	3	-139.622	1.000	1
151	1:DEAD	19.620	20.862	19.620	3	-224.519	19.620	1
	2:LIVE	19.620	23.669	19.620	3	-345.401	19.620	1
	3:SNOW	19.620	40.792	19.620	3	-1.08E+3	19.620	1
	4:WIND+	19.620	36.301	19.620	3	-889.371	19.620	1
	5:WIND-	19.620	609.567	19.620	1			
	1003:1.4 DEAC	19.620	29.207	19.620	3	-314.327	19.620	1
	1004:1.2 DEAC	19.620	36.869	19.620	3	-442.123	19.620	1
	1005:1.2 DEAC	19.620	45.431	19.620	3	-810.814	19.620	1
	1006:1.2 DEAC	19.620	25.035	19.620	3	-269.423	19.620	1
	1007:1.2 DEAC	19.620	62.905	19.620	3	-822.065	19.620	1
	1008:1.2 DEAC	19.620	81.056	19.620	3	-1.27E+3	19.620	1
	1009:1.2 DEAC	19.620	63.652	19.620	3	-517.281	19.620	1
	1010:1.2 DEAC	19.620	90.302	19.620	3	-2E+3	19.620	1
	1011:1.2 DEAC	19.620	108.452	19.620	3	-2.45E+3	19.620	1
	1012:1.2 DEAC	19.620	91.049	19.620	3	-1.7E+3	19.620	1
	1013:1.2 DEAC	19.620	43.185	19.620	3	-714.108	19.620	1
	1014:1.2 DEAC	19.620	67.670	8.175	1	-4.812	9.810	3
	1015:1.2 DEAC	19.620	73.170	19.620	3	-1.33E+3	19.620	1
	1016:1.2 DEAC	19.620	199.332	11.445	1			

CONNECTED User: Brett Eisenhauer

Part

Job Title Learning Experience Sloping Awning

Ref


By Date 03-Mar-23 Chd

Client Capitol Awning

File Sloped Awning 6ft Analys Date/Time 17-Mar-2023 09:45

## Beam Combined Axial and Bending Stresses Summary Cont...

Beam	L/C	Length (in)	Max Comp			Max Tens		
			Stress (psi)	d (in)	Corner	Stress (psi)	d (in)	Corner
	1017:1.2 DEAC	19.620	81.732	19.620	3	-1.7E+3	19.620	1
	1018:1.2 DEAC	19.620	46.924	19.620	3	-201.246	19.620	1
	1019:1.2 DEAC	19.620	61.335	19.620	3	-1.16E+3	19.620	1
	1020:1.2 DEAC	19.620	344.158	16.350	1			
	1021:0.9 DEAC	19.620	55.077	19.620	3	-1.09E+3	19.620	1
	1022:0.9 DEAC	19.620	407.500	19.620	1			
	1023:1.2 DEAC	19.620	33.193	19.620	3	-485.979	19.620	1
	1024:0.9 DEAC	19.620	18.776	19.620	3	-202.067	19.620	1
	1025:1 DEAD	19.620	20.862	19.620	3	-224.519	19.620	1
	1026:1 DEAD +	19.620	61.654	19.620	3	-1.31E+3	19.620	1
	1027:1 DEAD +	19.620	44.531	19.620	3	-569.920	19.620	1
	1028:1 DEAD +	19.620	38.614	19.620	3	-483.570	19.620	1
	1029:1 DEAD +	19.620	51.456	19.620	3	-1.04E+3	19.620	1
	1030:1 DEAD +	19.620	42.643	19.620	3	-758.141	19.620	1
	1031:1 DEAD +	19.620	154.130	13.080	1			
	1032:1 DEAD +	19.620	65.840	19.620	3	-1.15E+3	19.620	1
	1033:1 DEAD +	19.620	39.734	19.620	3	-26.394	19.620	1
	1034:1 DEAD +	19.620	78.682	19.620	3	-1.7E+3	19.620	1
	1035:1 DEAD +	19.620	52.576	19.620	3	-579.430	19.620	1
	1036:1 DEAD +	19.620	48.088	19.620	3	-891.547	19.620	1
	1037:1 DEAD +	19.620	238.538	14.715	1			
	1038:0.6 DEAC	19.620	34.298	19.620	3	-668.334	19.620	1
	1039:0.6 DEAC	19.620	231.291	17.985	1			
	1040:0.6 DEAC	19.620	12.517	19.620	3	-134.711	19.620	1
152	1:DEAD	1.144	223.654	1.144	3	-352.779	1.144	1
	2:LIVE	1.144	357.842	1.144	3	-564.279	1.144	1
	3:SNOW	1.144	1.18E+3	1.144	3	-1.85E+3	1.144	1
	4:WIND+	1.144	961.687	1.144	3	-1.52E+3	1.144	1
	5:WIND-	1.144	1.11E+3	1.144	1	-702.241	1.144	3
	1003:1.4 DEAC	1.144	313.116	1.144	3	-493.890	1.144	1
	1004:1.2 DEAC	1.144	447.306	1.144	3	-705.474	1.144	1
	1005:1.2 DEAC	1.144	856.579	1.144	3	-1.35E+3	1.144	1
	1006:1.2 DEAC	1.144	268.385	1.144	3	-423.335	1.144	1
	1007:1.2 DEAC	1.144	840.932	1.144	3	-1.33E+3	1.144	1
	1008:1.2 DEAC	1.144	1.32E+3	1.144	3	-2.08E+3	1.144	1
	1009:1.2 DEAC	1.144	489.812	1.144	3	-772.896	1.144	1
	1010:1.2 DEAC	1.144	2.15E+3	1.144	3	-3.39E+3	1.144	1
	1011:1.2 DEAC	1.144	2.63E+3	1.144	3	-4.15E+3	1.144	1
	1012:1.2 DEAC	1.144	1.8E+3	1.144	3	-2.84E+3	1.144	1
	1013:1.2 DEAC	1.144	749.229	1.144	3	-1.18E+3	1.144	1
	1014:1.2 DEAC	1.144	129.950	1.144	1	-82.735	1.144	3
	1015:1.2 DEAC	1.144	1.41E+3	1.144	3	-2.22E+3	1.144	1
	1016:1.2 DEAC	1.144	401.095	1.144	1	-254.935	1.144	3
	1017:1.2 DEAC	1.144	1.82E+3	1.144	3	-2.87E+3	1.144	1

	Job No <b>23-0005</b>	Sheet No <b>Pg. 26</b>	Rev
	Part		
CONNECTED User: Brett Eisenhauer	Ref		
Job Title Learning Experience Sloping Awning	By	Date 03-Mar-23	Chd
Client Capitol Awning	File Sloped Awning 6ft Analys	Date/Time 17-Mar-2023 09:45	

## Beam Combined Axial and Bending Stresses Summary Cont...

Beam	L/C	Length (in)	Max Comp			Max Tens		
			Stress (psi)	d (in)	Corner	Stress (psi)	d (in)	Corner
	1018:1.2 DEAC	1.144	154.338	1.144	3	-243.979	1.144	1
	1019:1.2 DEAC	1.144	1.23E+3	1.144	3	-1.94E+3	1.144	1
	1020:1.2 DEAC	1.144	683.234	1.144	1	-433.856	1.144	3
	1021:0.9 DEAC	1.144	1.16E+3	1.144	3	-1.83E+3	1.144	1
	1022:0.9 DEAC	1.144	789.068	1.144	1	-500.952	1.144	3
	1023:1.2 DEAC	1.144	503.663	1.144	3	-794.220	1.144	1
	1024:0.9 DEAC	1.144	201.289	1.144	3	-317.501	1.144	1
	1025:1 DEAD	1.144	223.654	1.144	3	-352.779	1.144	1
	1026:1 DEAD +	1.144	1.4E+3	1.144	3	-2.21E+3	1.144	1
	1027:1 DEAD +	1.144	581.496	1.144	3	-917.058	1.144	1
	1028:1 DEAD +	1.144	492.036	1.144	3	-775.988	1.144	1
	1029:1 DEAD +	1.144	1.11E+3	1.144	3	-1.74E+3	1.144	1
	1030:1 DEAD +	1.144	800.666	1.144	3	-1.26E+3	1.144	1
	1031:1 DEAD +	1.144	311.162	1.144	1	-197.690	1.144	3
	1032:1 DEAD +	1.144	1.21E+3	1.144	3	-1.91E+3	1.144	1
	1033:1 DEAD +	1.144	53.939	1.144	1	-34.645	1.144	3
	1034:1 DEAD +	1.144	1.83E+3	1.144	3	-2.88E+3	1.144	1
	1035:1 DEAD +	1.144	579.264	1.144	3	-913.672	1.144	1
	1036:1 DEAD +	1.144	944.919	1.144	3	-1.49E+3	1.144	1
	1037:1 DEAD +	1.144	477.148	1.144	1	-303.027	1.144	3
	1038:0.6 DEAC	1.144	711.205	1.144	3	-1.12E+3	1.144	1
	1039:0.6 DEAC	1.144	452.274	1.144	1	-287.152	1.144	3
	1040:0.6 DEAC	1.144	134.193	1.144	3	-211.667	1.144	1
153	1:DEAD	8.238	162.465	8.238	3	-291.472	8.238	1
	2:LIVE	8.238	259.862	8.238	3	-466.176	8.238	1
	3:SNOW	8.238	853.985	8.238	3	-1.53E+3	8.238	1
	4:WIND+	8.238	698.150	8.238	3	-1.25E+3	8.238	1
	5:WIND-	8.238	913.985	8.238	1	-509.576	8.238	3
	1003:1.4 DEAC	8.238	227.451	8.238	3	-408.061	8.238	1
	1004:1.2 DEAC	8.238	324.889	8.238	3	-582.854	8.238	1
	1005:1.2 DEAC	8.238	621.951	8.238	3	-1.12E+3	8.238	1
	1006:1.2 DEAC	8.238	194.958	8.238	3	-349.766	8.238	1
	1007:1.2 DEAC	8.238	610.738	8.238	3	-1.1E+3	8.238	1
	1008:1.2 DEAC	8.238	959.812	8.238	3	-1.72E+3	8.238	1
	1009:1.2 DEAC	8.238	355.950	8.238	3	-638.655	8.238	1
	1010:1.2 DEAC	8.238	1.56E+3	8.238	3	-2.8E+3	8.238	1
	1011:1.2 DEAC	8.238	1.91E+3	8.238	3	-3.43E+3	8.238	1
	1012:1.2 DEAC	8.238	1.31E+3	8.238	3	-2.34E+3	8.238	1
	1013:1.2 DEAC	8.238	544.033	8.238	3	-975.938	8.238	1
	1014:1.2 DEAC	8.238	126.962	0	3	-78.233	0	1
	1015:1.2 DEAC	8.238	1.02E+3	8.238	3	-1.84E+3	8.238	1
	1016:1.2 DEAC	8.238	356.212	0	3	-207.650	0	1
	1017:1.2 DEAC	8.238	1.32E+3	8.238	3	-2.37E+3	8.238	1
	1018:1.2 DEAC	8.238	112.375	8.238	3	-201.716	8.238	1

CONNECTED User: Brett Eisenhauer

Job Title Learning Experience Sloping Awning

Part

Ref

By Date 03-Mar-23 Chd

Client Capitol Awning

File Sloped Awning 6ft Analys Date/Time 17-Mar-2023 09:45

## Beam Combined Axial and Bending Stresses Summary Cont...

Beam	L/C	Length (in)	Max Comp			Max Tens		
			Stress (psi)	d (in)	Corner	Stress (psi)	d (in)	Corner
	1019:1.2 DEAC	8.238	893.108	8.238	3	-1.6E+3	8.238	1
	1020:1.2 DEAC	8.238	573.187	0	3	-321.861	0	1
	1021:0.9 DEAC	8.238	844.368	8.238	3	-1.51E+3	8.238	1
	1022:0.9 DEAC	8.238	653.002	0	3	-363.357	8.238	3
	1023:1.2 DEAC	8.238	365.755	8.238	3	-656.140	8.238	1
	1024:0.9 DEAC	8.238	146.219	8.238	3	-262.325	8.238	1
	1025:1 DEAD	8.238	162.465	8.238	3	-291.472	8.238	1
	1026:1 DEAD +	8.238	1.02E+3	8.238	3	-1.82E+3	8.238	1
	1027:1 DEAD +	8.238	422.327	8.238	3	-757.648	8.238	1
	1028:1 DEAD +	8.238	357.362	8.238	3	-641.104	8.238	1
	1029:1 DEAD +	8.238	802.954	8.238	3	-1.44E+3	8.238	1
	1030:1 DEAD +	8.238	581.355	8.238	3	-1.04E+3	8.238	1
	1031:1 DEAD +	8.238	269.418	0	3	-154.524	0	1
	1032:1 DEAD +	8.238	880.974	8.238	3	-1.58E+3	8.238	1
	1033:1 DEAD +	8.238	77.822	0	3	-56.297	0	1
	1034:1 DEAD +	8.238	1.33E+3	8.238	3	-2.38E+3	8.238	1
	1035:1 DEAD +	8.238	420.772	8.238	3	-754.885	8.238	1
	1036:1 DEAD +	8.238	686.077	8.238	3	-1.23E+3	8.238	1
	1037:1 DEAD +	8.238	403.285	0	3	-227.613	0	1
	1038:0.6 DEAC	8.238	516.369	8.238	3	-926.289	8.238	1
	1039:0.6 DEAC	8.238	375.838	0	3	-209.656	0	1
	1040:0.6 DEAC	8.238	97.479	8.238	3	-174.883	8.238	1
154	1:DEAD	1.000	198.413	1.000	1	-306.583	1.000	3
	2:LIVE	1.000	327.870	1.000	1	-500.040	1.000	3
	3:SNOW	1.000	1.12E+3	1.000	1	-1.68E+3	1.000	3
	4:WIND+	1.000	910.426	1.000	1	-1.37E+3	1.000	3
	5:WIND-	1.000	1.03E+3	1.000	3	-694.838	1.000	1
	1003:1.4 DEAC	1.000	277.779	1.000	1	-429.216	1.000	3
	1004:1.2 DEAC	1.000	402.031	1.000	1	-617.919	1.000	3
	1005:1.2 DEAC	1.000	796.874	1.000	1	-1.21E+3	1.000	3
	1006:1.2 DEAC	1.000	238.096	1.000	1	-367.899	1.000	3
	1007:1.2 DEAC	1.000	762.689	1.000	1	-1.17E+3	1.000	3
	1008:1.2 DEAC	1.000	1.22E+3	1.000	1	-1.85E+3	1.000	3
	1009:1.2 DEAC	1.000	415.270	1.000	1	-653.826	1.000	3
	1010:1.2 DEAC	1.000	2.03E+3	1.000	1	-3.06E+3	1.000	3
	1011:1.2 DEAC	1.000	2.48E+3	1.000	1	-3.74E+3	1.000	3
	1012:1.2 DEAC	1.000	1.68E+3	1.000	1	-2.54E+3	1.000	3
	1013:1.2 DEAC	1.000	693.309	1.000	1	-1.05E+3	1.000	3
	1014:1.2 DEAC	1.000	146.239	1.000	3	-109.323	1.000	1
	1015:1.2 DEAC	1.000	1.31E+3	1.000	1	-1.99E+3	1.000	3
	1016:1.2 DEAC	1.000	410.357	1.000	3	-292.807	1.000	1
	1017:1.2 DEAC	1.000	1.71E+3	1.000	1	-2.58E+3	1.000	3
	1018:1.2 DEAC	1.000	102.036	1.000	1	-179.689	1.000	3
	1019:1.2 DEAC	1.000	1.15E+3	1.000	1	-1.74E+3	1.000	3

CONNECTED User: Brett Eisenhauer

Part

Job Title Learning Experience Sloping Awning

Ref

By Date 03-Mar-23 Chd

Client Capitol Awning

File Sloped Awning 6ft Analys Date/Time 17-Mar-2023 09:45

## Beam Combined Axial and Bending Stresses Summary Cont...

Beam	L/C	Length (in)	Max Comp			Max Tens		
			Stress (psi)	d (in)	Corner	Stress (psi)	d (in)	Corner
	1020:1.2 DEAC	1.000	660.377	1.000	3	-456.742	1.000	1
	1021:0.9 DEAC	1.000	1.09E+3	1.000	1	-1.65E+3	1.000	3
	1022:0.9 DEAC	1.000	752.352	1.000	3	-516.266	1.000	1
	1023:1.2 DEAC	1.000	461.607	1.000	1	-703.926	1.000	3
	1024:0.9 DEAC	1.000	178.572	1.000	1	-275.924	1.000	3
	1025:1 DEAD	1.000	198.413	1.000	1	-306.583	1.000	3
	1026:1 DEAD +	1.000	1.32E+3	1.000	1	-1.99E+3	1.000	3
	1027:1 DEAD +	1.000	526.284	1.000	1	-806.623	1.000	3
	1028:1 DEAD +	1.000	444.316	1.000	1	-681.613	1.000	3
	1029:1 DEAD +	1.000	1.04E+3	1.000	1	-1.57E+3	1.000	3
	1030:1 DEAD +	1.000	744.669	1.000	1	-1.13E+3	1.000	3
	1031:1 DEAD +	1.000	310.383	1.000	3	-218.489	1.000	1
	1032:1 DEAD +	1.000	1.13E+3	1.000	1	-1.71E+3	1.000	3
	1033:1 DEAD +	1.000	89.594	1.000	3	-76.812	1.000	1
	1034:1 DEAD +	1.000	1.72E+3	1.000	1	-2.59E+3	1.000	3
	1035:1 DEAD +	1.000	515.452	1.000	1	-795.475	1.000	3
	1036:1 DEAD +	1.000	881.233	1.000	1	-1.33E+3	1.000	3
	1037:1 DEAD +	1.000	464.625	1.000	3	-322.715	1.000	1
	1038:0.6 DEAC	1.000	665.303	1.000	1	-1.01E+3	1.000	3
	1039:0.6 DEAC	1.000	433.016	1.000	3	-297.855	1.000	1
	1040:0.6 DEAC	1.000	119.048	1.000	1	-183.950	1.000	3
155	1:DEAD	37.562	137.092	0	3	-9.139	0	1
	2:LIVE	37.562	203.915	0	3	-13.761	37.562	3
	3:SNOW	37.562	738.318	37.562	1	-154.791	37.562	3
	4:WIND+	37.562	597.606	37.562	1	-117.800	37.562	3
	5:WIND-	37.562	168.884	37.562	3	-492.911	37.562	1
	1003:1.4 DEAC	37.562	191.929	0	3	-12.795	0	1
	1004:1.2 DEAC	37.562	266.468	0	3	-16.536	0	1
	1005:1.2 DEAC	37.562	505.850	37.562	1	-66.165	37.562	3
	1006:1.2 DEAC	37.562	164.510	0	3	-10.967	0	1
	1007:1.2 DEAC	37.562	490.775	0	3	-28.787	0	1
	1008:1.2 DEAC	37.562	758.461	37.562	1	-69.687	37.562	3
	1009:1.2 DEAC	37.562	328.780	0	3	-26.462	0	1
	1010:1.2 DEAC	37.562	1.32E+3	37.562	1	-236.435	37.562	3
	1011:1.2 DEAC	37.562	1.62E+3	37.562	1	-295.335	37.562	3
	1012:1.2 DEAC	37.562	1.07E+3	37.562	1	-151.993	37.562	3
	1013:1.2 DEAC	37.562	435.494	37.562	1	-47.669	37.562	3
	1014:1.2 DEAC	37.562	95.672	37.562	3	-109.764	37.562	1
	1015:1.2 DEAC	37.562	835.225	37.562	1	-113.450	37.562	3
	1016:1.2 DEAC	37.562	173.234	37.562	3	-255.292	37.562	1
	1017:1.2 DEAC	37.562	1.1E+3	37.562	1	-183.965	37.562	3
	1018:1.2 DEAC	37.562	146.289	0	3	-17.981	0	1
	1019:1.2 DEAC	37.562	734.297	37.562	1	-106.569	37.562	3
	1020:1.2 DEAC	37.562	180.115	37.562	3	-356.220	37.562	1

CONNECTED User: Brett Eisenhauer

Job Title Learning Experience Sloping Awning

Part

Ref

By Date 03-Mar-23 Chd

Client Capitol Awning

File Sloped Awning 6ft Analys Date/Time 17-Mar-2023 09:45

## Beam Combined Axial and Bending Stresses Summary Cont...

Beam	L/C	Length (in)	Max Comp			Max Tens		
			Stress (psi)	d (in)	Corner	Stress (psi)	d (in)	Corner
	1021:0.9 DEAC	37.562	700.125	37.562	1	-109.377	37.562	3
	1022:0.9 DEAC	37.562	177.307	37.562	3	-390.392	37.562	1
	1023:1.2 DEAC	37.562	286.818	0	3	-19.728	37.562	3
	1024:0.9 DEAC	37.562	123.383	0	3	-8.225	0	1
	1025:1 DEAD	37.562	137.092	0	3	-9.139	0	1
	1026:1 DEAD +	37.562	852.227	37.562	1	-145.432	37.562	3
	1027:1 DEAD +	37.562	341.007	0	3	-20.276	0	1
	1028:1 DEAD +	37.562	290.029	0	3	-17.492	0	1
	1029:1 DEAD +	37.562	667.648	37.562	1	-106.735	37.562	3
	1030:1 DEAD +	37.562	472.473	37.562	1	-61.321	37.562	3
	1031:1 DEAD +	37.562	110.689	37.562	3	-181.837	37.562	1
	1032:1 DEAD +	37.562	713.505	37.562	1	-89.312	37.562	3
	1033:1 DEAD +	37.562	125.701	37.562	3	-104.383	37.562	1
	1034:1 DEAD +	37.562	1.12E+3	37.562	1	-195.084	37.562	3
	1035:1 DEAD +	37.562	352.753	0	3	-23.147	0	1
	1036:1 DEAD +	37.562	562.114	37.562	1	-78.991	37.562	3
	1037:1 DEAD +	37.562	136.022	37.562	3	-255.774	37.562	1
	1038:0.6 DEAC	37.562	426.909	37.562	1	-65.065	37.562	3
	1039:0.6 DEAC	37.562	106.946	37.562	3	-227.401	37.562	1
	1040:0.6 DEAC	37.562	82.255	0	3	-5.483	0	1
156	1:DEAD	23.903	107.836	0	1	-163.155	0	2
	2:LIVE	23.903	173.371	0	1	-252.311	0	2
	3:SNOW	23.903	573.134	0	1	-796.156	0	2
	4:WIND+	23.903	468.278	0	1	-653.508	0	2
	5:WIND-	23.903	452.014	0	2	-344.355	0	1
	1003:1.4 DEAC	23.903	150.970	0	1	-228.418	0	2
	1004:1.2 DEAC	23.903	216.089	0	1	-321.942	0	2
	1005:1.2 DEAC	23.903	415.970	0	1	-593.865	0	2
	1006:1.2 DEAC	23.903	129.403	0	1	-195.787	0	2
	1007:1.2 DEAC	23.903	406.797	0	1	-599.483	0	2
	1008:1.2 DEAC	23.903	640.936	0	1	-926.238	0	2
	1009:1.2 DEAC	23.903	234.619	0	1	-373.476	0	2
	1010:1.2 DEAC	23.903	1.05E+3	0	1	-1.47E+3	0	2
	1011:1.2 DEAC	23.903	1.28E+3	0	1	-1.8E+3	0	2
	1012:1.2 DEAC	23.903	874.240	0	1	-1.24E+3	0	2
	1013:1.2 DEAC	23.903	363.542	0	1	-522.541	0	2
	1014:1.2 DEAC	23.903	30.220	0	2	-42.774	0	1
	1015:1.2 DEAC	23.903	684.367	0	1	-975.450	0	2
	1016:1.2 DEAC	23.903	130.072	0	2	-128.267	0	1
	1017:1.2 DEAC	23.903	884.249	0	1	-1.25E+3	0	2
	1018:1.2 DEAC	23.903	71.615	0	1	-141.851	0	2
	1019:1.2 DEAC	23.903	597.681	0	1	-849.295	0	2
	1020:1.2 DEAC	23.903	256.227	0	2	-214.952	0	1
	1021:0.9 DEAC	23.903	565.331	0	1	-800.348	0	2

CONNECTED User: Brett Eisenhauer

Job Title Learning Experience Sloping Awning

Part

Ref

By Date 03-Mar-23 Chd

Client Capitol Awning

File Sloped Awning 6ft Analys Date/Time 17-Mar-2023 09:45

## Beam Combined Axial and Bending Stresses Summary Cont...

Beam	L/C	Length (in)	Max Comp			Max Tens		
			Stress (psi)	d (in)	Corner	Stress (psi)	d (in)	Corner
	1022:0.9 DEAC	23.903	305.174	0	2	-247.303	0	1
	1023:1.2 DEAC	23.903	244.030	0	1	-355.018	0	2
	1024:0.9 DEAC	23.903	97.052	0	1	-146.840	0	2
	1025:1 DEAD	23.903	107.836	0	1	-163.155	0	2
	1026:1 DEAD +	23.903	680.970	0	1	-959.312	0	2
	1027:1 DEAD +	23.903	281.207	0	1	-415.466	0	2
	1028:1 DEAD +	23.903	237.864	0	1	-352.388	0	2
	1029:1 DEAD +	23.903	537.687	0	1	-760.273	0	2
	1030:1 DEAD +	23.903	388.803	0	1	-555.260	0	2
	1031:1 DEAD +	23.903	108.053	0	2	-98.777	0	1
	1032:1 DEAD +	23.903	589.073	0	1	-842.519	0	2
	1033:1 DEAD +	23.903				-20.402	0	1
	1034:1 DEAD +	23.903	888.895	0	1	-1.25E+3	0	2
	1035:1 DEAD +	23.903	279.420	0	1	-421.262	0	2
	1036:1 DEAD +	23.903	459.045	0	1	-653.287	0	2
	1037:1 DEAD +	23.903	175.855	0	2	-150.431	0	1
	1038:0.6 DEAC	23.903	345.669	0	1	-489.998	0	2
	1039:0.6 DEAC	23.903	173.315	0	2	-141.912	0	1
	1040:0.6 DEAC	23.903	64.702	0	1	-97.893	0	2
157	1:DEAD	23.233	145.556	23.233	3	-66.487	23.233	1
	2:LIVE	23.233	227.899	23.233	3	-104.293	23.233	1
	3:SNOW	23.233	730.191	23.233	3	-334.910	23.233	1
	4:WIND+	23.233	598.442	23.233	3	-274.420	23.233	1
	5:WIND-	23.233	194.374	23.233	1	-422.610	23.233	3
	1003:1.4 DEAC	23.233	203.779	23.233	3	-93.082	23.233	1
	1004:1.2 DEAC	23.233	288.617	23.233	3	-131.931	23.233	1
	1005:1.2 DEAC	23.233	539.763	23.233	3	-247.240	23.233	1
	1006:1.2 DEAC	23.233	174.668	23.233	3	-79.785	23.233	1
	1007:1.2 DEAC	23.233	539.306	23.233	3	-246.654	23.233	1
	1008:1.2 DEAC	23.233	838.528	23.233	3	-383.864	23.233	1
	1009:1.2 DEAC	23.233	328.002	23.233	3	-149.467	23.233	1
	1010:1.2 DEAC	23.233	1.34E+3	23.233	3	-615.640	23.233	1
	1011:1.2 DEAC	23.233	1.64E+3	23.233	3	-752.850	23.233	1
	1012:1.2 DEAC	23.233	1.13E+3	23.233	3	-518.453	23.233	1
	1013:1.2 DEAC	23.233	473.889	23.233	3	-216.995	23.233	1
	1014:1.2 DEAC	23.233	45.209	0	3	-60.000	0	1
	1015:1.2 DEAC	23.233	887.060	23.233	3	-406.352	23.233	1
	1016:1.2 DEAC	23.233	80.625	0	3	-145.118	0	1
	1017:1.2 DEAC	23.233	1.14E+3	23.233	3	-521.660	23.233	1
	1018:1.2 DEAC	23.233	117.154	23.233	3	-52.865	23.233	1
	1019:1.2 DEAC	23.233	773.110	23.233	3	-354.205	23.233	1
	1020:1.2 DEAC	23.233	114.589	23.233	1	-247.942	23.233	3
	1021:0.9 DEAC	23.233	729.443	23.233	3	-334.259	23.233	1
	1022:0.9 DEAC	23.233	134.536	23.233	1	-291.609	23.233	3

CONNECTED User: Brett Eisenhauer

Job Title Learning Experience Sloping Awning

Part

Ref

By Date 03-Mar-23 Chd

Client Capitol Awning

File Sloped Awning 6ft Analys Date/Time 17-Mar-2023 09:45

## Beam Combined Axial and Bending Stresses Summary Cont...

Beam	L/C	Length (in)	Max Comp			Max Tens		
			Stress (psi)	d (in)	Corner	Stress (psi)	d (in)	Corner
	1023:1.2 DEAC	23.233	320.706	23.233	3	-146.767	23.233	1
	1024:0.9 DEAC	23.233	131.001	23.233	3	-59.839	23.233	1
	1025:1 DEAD	23.233	145.556	23.233	3	-66.487	23.233	1
	1026:1 DEAD +	23.233	875.747	23.233	3	-401.397	23.233	1
	1027:1 DEAD +	23.233	373.456	23.233	3	-170.780	23.233	1
	1028:1 DEAD +	23.233	316.481	23.233	3	-144.707	23.233	1
	1029:1 DEAD +	23.233	693.200	23.233	3	-317.670	23.233	1
	1030:1 DEAD +	23.233	504.622	23.233	3	-231.139	23.233	1
	1031:1 DEAD +	23.233	51.107	0	3	-108.009	23.233	3
	1032:1 DEAD +	23.233	765.312	23.233	3	-350.522	23.233	1
	1033:1 DEAD +	23.233	60.268	0	3	-53.137	0	1
	1034:1 DEAD +	23.233	1.14E+3	23.233	3	-523.485	23.233	1
	1035:1 DEAD +	23.233	376.242	23.233	3	-171.889	23.233	1
	1036:1 DEAD +	23.233	594.388	23.233	3	-272.302	23.233	1
	1037:1 DEAD +	23.233	79.293	23.233	1	-171.401	23.233	3
	1038:0.6 DEAC	23.233	446.399	23.233	3	-204.544	23.233	1
	1039:0.6 DEAC	23.233	76.732	23.233	1	-166.232	23.233	3
	1040:0.6 DEAC	23.233	87.334	23.233	3	-39.892	23.233	1
158	1:DEAD	13.334	148.790	0	2	-160.265	0	1
	2:LIVE	13.334	244.430	0	2	-258.531	0	1
	3:SNOW	13.334	827.831	0	2	-857.954	0	1
	4:WIND+	13.334	674.808	0	2	-700.728	0	1
	5:WIND-	13.334	517.770	0	1	-511.122	0	2
	1003:1.4 DEAC	13.334	208.306	0	2	-224.371	0	1
	1004:1.2 DEAC	13.334	300.763	0	2	-321.584	0	1
	1005:1.2 DEAC	13.334	592.464	0	2	-621.295	0	1
	1006:1.2 DEAC	13.334	178.548	0	2	-192.318	0	1
	1007:1.2 DEAC	13.334	569.636	0	2	-605.969	0	1
	1008:1.2 DEAC	13.334	907.040	0	2	-956.333	0	1
	1009:1.2 DEAC	13.334	314.075	0	2	-347.084	0	1
	1010:1.2 DEAC	13.334	1.5E+3	0	2	-1.57E+3	0	1
	1011:1.2 DEAC	13.334	1.84E+3	0	2	-1.92E+3	0	1
	1012:1.2 DEAC	13.334	1.25E+3	0	2	-1.31E+3	0	1
	1013:1.2 DEAC	13.334	515.952	0	2	-542.683	0	1
	1014:1.2 DEAC	13.334	66.567	0	1	-77.013	0	2
	1015:1.2 DEAC	13.334	975.571	0	2	-1.02E+3	0	1
	1016:1.2 DEAC	13.334	196.186	0	1	-210.359	0	2
	1017:1.2 DEAC	13.334	1.27E+3	0	2	-1.32E+3	0	1
	1018:1.2 DEAC	13.334	81.341	0	2	-103.525	0	1
	1019:1.2 DEAC	13.334	853.356	0	2	-893.047	0	1
	1020:1.2 DEAC	13.334	325.452	0	1	-332.574	0	2
	1021:0.9 DEAC	13.334	808.719	0	2	-844.967	0	1
	1022:0.9 DEAC	13.334	373.531	0	1	-377.211	0	2
	1023:1.2 DEAC	13.334	344.115	0	2	-363.909	0	1

CONNECTED User: Brett Eisenhauer

Job Title Learning Experience Sloping Awning

Part

Ref

By Date 03-Mar-23 Chd

Client Capitol Awning

File Sloped Awning 6ft Analys Date/Time 17-Mar-2023 09:45

## Beam Combined Axial and Bending Stresses Summary Cont...

Beam	L/C	Length (in)	Max Comp			Max Tens		
			Stress (psi)	d (in)	Corner	Stress (psi)	d (in)	Corner
	1024:0.9 DEAC	13.334	133.911	0	2	-144.239	0	1
	1025:1 DEAD	13.334	148.790	0	2	-160.265	0	1
	1026:1 DEAD +	13.334	976.621	0	2	-1.02E+3	0	1
	1027:1 DEAD +	13.334	393.220	0	2	-418.797	0	1
	1028:1 DEAD +	13.334	332.113	0	2	-354.164	0	1
	1029:1 DEAD +	13.334	769.664	0	2	-803.731	0	1
	1030:1 DEAD +	13.334	553.675	0	2	-580.702	0	1
	1031:1 DEAD +	13.334	150.397	0	1	-157.883	0	2
	1032:1 DEAD +	13.334	838.218	0	2	-879.710	0	1
	1033:1 DEAD +	13.334	34.164	0	1	-51.229	0	2
	1034:1 DEAD +	13.334	1.28E+3	0	2	-1.33E+3	0	1
	1035:1 DEAD +	13.334	386.322	0	2	-415.403	0	1
	1036:1 DEAD +	13.334	654.896	0	2	-685.812	0	1
	1037:1 DEAD +	13.334	228.062	0	1	-234.552	0	2
	1038:0.6 DEAC	13.334	494.159	0	2	-516.596	0	1
	1039:0.6 DEAC	13.334	214.503	0	1	-217.399	0	2
	1040:0.6 DEAC	13.334	89.274	0	2	-96.159	0	1
160	1:DEAD	1.000	63.810	0	1			
	2:LIVE	1.000	95.012	0	1			
	3:SNOW	1.000	287.276	1.000	1			
	4:WIND+	1.000	235.422	0	1			
	5:WIND-	1.000				-188.648	0	1
	1003:1.4 DEAC	1.000	89.333	0	1			
	1004:1.2 DEAC	1.000	124.077	0	1			
	1005:1.2 DEAC	1.000	219.244	0	1			
	1006:1.2 DEAC	1.000	76.571	0	1			
	1007:1.2 DEAC	1.000	228.590	0	1			
	1008:1.2 DEAC	1.000	346.301	0	1			
	1009:1.2 DEAC	1.000	152.847	0	1			
	1010:1.2 DEAC	1.000	533.124	0	1			
	1011:1.2 DEAC	1.000	650.834	0	1			
	1012:1.2 DEAC	1.000	457.381	0	1			
	1013:1.2 DEAC	1.000	194.282	0	1			
	1014:1.2 DEAC	1.000	0.829	0	3	-40.823	0	1
	1015:1.2 DEAC	1.000	359.499	0	1			
	1016:1.2 DEAC	1.000				-95.954	0	1
	1017:1.2 DEAC	1.000	454.666	0	1			
	1018:1.2 DEAC	1.000	67.758	0	1			
	1019:1.2 DEAC	1.000	311.993	0	1			
	1020:1.2 DEAC	1.000				-135.147	0	1
	1021:0.9 DEAC	1.000	292.850	0	1			
	1022:0.9 DEAC	1.000				-148.523	0	1
	1023:1.2 DEAC	1.000	133.640	0	1			
	1024:0.9 DEAC	1.000	57.429	0	1			

CONNECTED User: Brett Eisenhauer

Job Title Learning Experience Sloping Awning

Part

Ref

By Date 03-Mar-23 Chd

Client Capitol Awning

File Sloped Awning 6ft Analys Date/Time 17-Mar-2023 09:45

## Beam Combined Axial and Bending Stresses Summary Cont...

Beam	L/C	Length (in)	Max Comp			Max Tens		
			Stress (psi)	d (in)	Corner	Stress (psi)	d (in)	Corner
	1025:1 DEAD	1.000	63.810	0	1			
	1026:1 DEAD +	1.000	349.155	0	1			
	1027:1 DEAD +	1.000	158.821	0	1			
	1028:1 DEAD +	1.000	135.068	0	1			
	1029:1 DEAD +	1.000	277.818	0	1			
	1030:1 DEAD +	1.000	205.063	0	1			
	1031:1 DEAD +	1.000				-68.605	0	1
	1032:1 DEAD +	1.000	311.635	0	1			
	1033:1 DEAD +	1.000	21.454	0	3	-38.113	0	1
	1034:1 DEAD +	1.000	454.385	0	1			
	1035:1 DEAD +	1.000	164.204	0	1			
	1036:1 DEAD +	1.000	240.376	0	1			
	1037:1 DEAD +	1.000				-96.902	0	1
	1038:0.6 DEAC	1.000	179.539	0	1			
	1039:0.6 DEAC	1.000				-86.439	0	1
	1040:0.6 DEAC	1.000	38.286	0	1			
161	1:DEAD	1.000	143.741	0	3	-44.476	0	1
	2:LIVE	1.000	218.965	0	3	-60.264	0	1
	3:SNOW	1.000	677.830	0	3	-156.570	0	1
	4:WIND+	1.000	557.472	0	3	-131.310	0	1
	5:WIND-	1.000	64.462	0	1	-375.303	0	3
	1003:1.4 DEAC	1.000	201.238	0	3	-62.266	0	1
	1004:1.2 DEAC	1.000	281.972	0	3	-83.502	0	1
	1005:1.2 DEAC	1.000	511.404	0	3	-131.656	0	1
	1006:1.2 DEAC	1.000	172.489	0	3	-53.371	0	1
	1007:1.2 DEAC	1.000	522.833	0	3	-149.792	0	1
	1008:1.2 DEAC	1.000	801.569	0	3	-215.447	0	1
	1009:1.2 DEAC	1.000	335.182	0	3	-117.561	0	1
	1010:1.2 DEAC	1.000	1.26E+3	0	3	-303.883	0	1
	1011:1.2 DEAC	1.000	1.54E+3	0	3	-369.538	0	1
	1012:1.2 DEAC	1.000	1.07E+3	0	3	-271.653	0	1
	1013:1.2 DEAC	1.000	451.225	0	3	-119.025	0	1
	1014:1.2 DEAC	1.000				-21.140	0	1
	1015:1.2 DEAC	1.000	839.444	0	3	-214.812	0	1
	1016:1.2 DEAC	1.000				-96.465	1.000	3
	1017:1.2 DEAC	1.000	1.07E+3	0	3	-262.966	0	1
	1018:1.2 DEAC	1.000	136.101	0	3	-67.194	0	1
	1019:1.2 DEAC	1.000	729.961	0	3	-184.680	0	1
	1020:1.2 DEAC	1.000	11.091	0	1	-202.814	0	3
	1021:0.9 DEAC	1.000	686.839	0	3	-171.338	0	1
	1022:0.9 DEAC	1.000	24.434	0	1	-245.936	0	3
	1023:1.2 DEAC	1.000	308.055	0	3	-84.685	0	1
	1024:0.9 DEAC	1.000	129.367	0	3	-40.028	0	1
	1025:1 DEAD	1.000	143.741	0	3	-44.476	0	1

CONNECTED User: Brett Eisenhauer

Job Title Learning Experience Sloping Awning

Part

Ref

By Date 03-Mar-23 Chd

Client Capitol Awning

File Sloped Awning 6ft Analys Date/Time 17-Mar-2023 09:45

## Beam Combined Axial and Bending Stresses Summary Cont...

Beam	L/C	Length (in)	Max Comp			Max Tens		
			Stress (psi)	d (in)	Corner	Stress (psi)	d (in)	Corner
	1026:1 DEAD +	1.000	821.571	0	3	-201.046	0	1
	1027:1 DEAD +	1.000	362.706	0	3	-104.739	0	1
	1028:1 DEAD +	1.000	307.965	0	3	-89.673	0	1
	1029:1 DEAD +	1.000	652.114	0	3	-161.903	0	1
	1030:1 DEAD +	1.000	478.224	0	3	-123.261	0	1
	1031:1 DEAD +	1.000				-81.591	0.667	3
	1032:1 DEAD +	1.000	726.069	0	3	-188.155	0	1
	1033:1 DEAD +	1.000	26.487	0	3	-41.327	0	1
	1034:1 DEAD +	1.000	1.07E+3	0	3	-260.386	0	1
	1035:1 DEAD +	1.000	370.636	0	3	-113.557	0	1
	1036:1 DEAD +	1.000	561.845	0	3	-142.958	0	1
	1037:1 DEAD +	1.000	3.871	0	1	-137.736	0	3
	1038:0.6 DEAC	1.000	420.728	0	3	-105.471	0	1
	1039:0.6 DEAC	1.000	11.992	0	1	-138.937	0	3
	1040:0.6 DEAC	1.000	86.245	0	3	-26.685	0	1
162	1:DEAD	1.000	119.821	1.000	3			
	2:LIVE	1.000	168.765	1.000	3			
	3:SNOW	1.000	467.322	1.000	3			
	4:WIND+	1.000	389.012	1.000	3			
	5:WIND-	1.000				-302.225	1.000	1
	1003:1.4 DEAC	1.000	167.750	1.000	3			
	1004:1.2 DEAC	1.000	228.168	1.000	3			
	1005:1.2 DEAC	1.000	377.447	1.000	3			
	1006:1.2 DEAC	1.000	143.786	1.000	3			
	1007:1.2 DEAC	1.000	413.810	1.000	3			
	1008:1.2 DEAC	1.000	608.316	1.000	3			
	1009:1.2 DEAC	1.000	304.864	1.000	3			
	1010:1.2 DEAC	1.000	891.501	1.000	3			
	1011:1.2 DEAC	1.000	1.09E+3	1.000	3			
	1012:1.2 DEAC	1.000	782.556	1.000	3			
	1013:1.2 DEAC	1.000	338.292	1.000	3			
	1014:1.2 DEAC	1.000	34.840	1.000	3	-88.743	1.000	1
	1015:1.2 DEAC	1.000	617.180	1.000	3			
	1016:1.2 DEAC	1.000	10.278	1.000	3	-188.201	1.000	1
	1017:1.2 DEAC	1.000	766.459	1.000	3			
	1018:1.2 DEAC	1.000	159.556	1.000	3	-31.634	1.000	1
	1019:1.2 DEAC	1.000	532.798	1.000	3			
	1020:1.2 DEAC	1.000				-239.855	1.000	1
	1021:0.9 DEAC	1.000	496.851	1.000	3			
	1022:0.9 DEAC	1.000				-255.448	1.000	1
	1023:1.2 DEAC	1.000	237.250	1.000	3			
	1024:0.9 DEAC	1.000	107.839	1.000	3			
	1025:1 DEAD	1.000	119.821	1.000	3			
	1026:1 DEAD +	1.000	587.143	1.000	3			

CONNECTED User: Brett Eisenhauer

Job Title Learning Experience Sloping Awning

Part

Ref

By Date 03-Mar-23 Chd

Client Capitol Awning

File Sloped Awning 6ft Analys Date/Time 17-Mar-2023 09:45

## Beam Combined Axial and Bending Stresses Summary Cont...

Beam	L/C	Length (in)	Max Comp			Max Tens		
			Stress (psi)	d (in)	Corner	Stress (psi)	d (in)	Corner
	1027:1 DEAD +	1.000	288.586	1.000	3			
	1028:1 DEAD +	1.000	246.395	1.000	3			
	1029:1 DEAD +	1.000	470.313	1.000	3			
	1030:1 DEAD +	1.000	353.229	1.000	3			
	1031:1 DEAD +	1.000				-129.360	1.000	1
	1032:1 DEAD +	1.000	538.154	1.000	3			
	1033:1 DEAD +	1.000	82.977	1.000	3	-97.213	1.000	1
	1034:1 DEAD +	1.000	762.072	1.000	3			
	1035:1 DEAD +	1.000	306.895	1.000	3			
	1036:1 DEAD +	1.000	411.580	1.000	3			
	1037:1 DEAD +	1.000				-174.694	1.000	1
	1038:0.6 DEAC	1.000	305.300	1.000	3			
	1039:0.6 DEAC	1.000				-150.150	1.000	1
	1040:0.6 DEAC	1.000	71.893	1.000	3			
163	1:DEAD	17.025	65.347	17.025	3			
	2:LIVE	17.025	97.617	17.025	3			
	3:SNOW	17.025	295.616	7.094	1			
	4:WIND+	17.025	242.831	17.025	3			
	5:WIND-	17.025				-185.120	0	1
	1003:1.4 DEAC	17.025	91.486	17.025	3			
	1004:1.2 DEAC	17.025	127.225	17.025	3			
	1005:1.2 DEAC	17.025	225.648	17.025	3			
	1006:1.2 DEAC	17.025	78.417	17.025	3			
	1007:1.2 DEAC	17.025	234.604	17.025	3			
	1008:1.2 DEAC	17.025	356.019	17.025	3			
	1009:1.2 DEAC	17.025	155.946	17.025	3			
	1010:1.2 DEAC	17.025	549.558	17.025	3			
	1011:1.2 DEAC	17.025	670.973	17.025	3			
	1012:1.2 DEAC	17.025	470.900	17.025	3			
	1013:1.2 DEAC	17.025	199.832	17.025	3			
	1014:1.2 DEAC	17.025				-39.754	17.025	1
	1015:1.2 DEAC	17.025	370.057	17.025	3			
	1016:1.2 DEAC	17.025				-93.273	17.025	1
	1017:1.2 DEAC	17.025	468.480	17.025	3			
	1018:1.2 DEAC	17.025	68.333	17.025	3			
	1019:1.2 DEAC	17.025	321.248	17.025	3			
	1020:1.2 DEAC	17.025				-131.163	17.025	1
	1021:0.9 DEAC	17.025	301.644	17.025	3			
	1022:0.9 DEAC	17.025				-144.077	17.025	1
	1023:1.2 DEAC	17.025	137.309	17.025	3			
	1024:0.9 DEAC	17.025	58.812	17.025	3			
	1025:1 DEAD	17.025	65.347	17.025	3			
	1026:1 DEAD +	17.025	359.810	17.025	3			
	1027:1 DEAD +	17.025	162.964	17.025	3			

CONNECTED User: Brett Eisenhauer

Job Title Learning Experience Sloping Awning

Part

Ref

By Date 03-Mar-23 Chd

Client Capitol Awning

File Sloped Awning 6ft Analys Date/Time 17-Mar-2023 09:45

## Beam Combined Axial and Bending Stresses Summary Cont...

Beam	L/C	Length (in)	Max Comp			Max Tens		
			Stress (psi)	d (in)	Corner	Stress (psi)	d (in)	Corner
	1028:1 DEAD +	17.025	138.560	17.025	3			
	1029:1 DEAD +	17.025	286.195	17.025	3			
	1030:1 DEAD +	17.025	211.046	17.025	3			
	1031:1 DEAD +	17.025				-66.645	17.025	1
	1032:1 DEAD +	17.025	320.683	17.025	3			
	1033:1 DEAD +	17.025	20.574	17.025	3	-37.232	17.025	1
	1034:1 DEAD +	17.025	468.318	17.025	3			
	1035:1 DEAD +	17.025	168.208	17.025	3			
	1036:1 DEAD +	17.025	247.471	17.025	3			
	1037:1 DEAD +	17.025				-94.068	17.025	1
	1038:0.6 DEAC	17.025	184.907	17.025	3			
	1039:0.6 DEAC	17.025				-83.863	17.025	1
	1040:0.6 DEAC	17.025	39.208	17.025	3			
164	1:DEAD	1.000	69.014	1.000	3			
	2:LIVE	1.000	101.343	1.000	3			
	3:SNOW	1.000	298.551	1.000	3			
	4:WIND+	1.000	246.824	1.000	3			
	5:WIND-	1.000				-186.077	1.000	1
	1003:1.4 DEAC	1.000	96.620	1.000	3			
	1004:1.2 DEAC	1.000	133.489	1.000	3			
	1005:1.2 DEAC	1.000	232.092	1.000	3			
	1006:1.2 DEAC	1.000	82.817	1.000	3			
	1007:1.2 DEAC	1.000	244.966	1.000	3			
	1008:1.2 DEAC	1.000	368.378	1.000	3			
	1009:1.2 DEAC	1.000	167.938	1.000	3			
	1010:1.2 DEAC	1.000	560.498	1.000	3			
	1011:1.2 DEAC	1.000	683.910	1.000	3			
	1012:1.2 DEAC	1.000	483.470	1.000	3			
	1013:1.2 DEAC	1.000	206.229	1.000	3			
	1014:1.2 DEAC	1.000	5.789	1.000	3	-45.783	1.000	1
	1015:1.2 DEAC	1.000	380.313	1.000	3			
	1016:1.2 DEAC	1.000				-102.795	1.000	1
	1017:1.2 DEAC	1.000	478.917	1.000	3			
	1018:1.2 DEAC	1.000	78.036	1.000	3	-3.136	1.000	1
	1019:1.2 DEAC	1.000	329.641	1.000	3			
	1020:1.2 DEAC	1.000				-138.822	1.000	1
	1021:0.9 DEAC	1.000	308.937	1.000	3			
	1022:0.9 DEAC	1.000				-150.636	1.000	1
	1023:1.2 DEAC	1.000	142.527	1.000	3			
	1024:0.9 DEAC	1.000	62.113	1.000	3			
	1025:1 DEAD	1.000	69.014	1.000	3			
	1026:1 DEAD +	1.000	367.565	1.000	3			
	1027:1 DEAD +	1.000	170.357	1.000	3			
	1028:1 DEAD +	1.000	145.022	1.000	3			

CONNECTED User: Brett Eisenhauer

Job Title Learning Experience Sloping Awning

Part

Ref

By

Date 03-Mar-23

Chd


Client Capitol Awning

File Sloped Awning 6ft Analys

Date/Time 17-Mar-2023 09:45

## Beam Combined Axial and Bending Stresses Summary Cont...

Beam	L/C	Length (in)	Max Comp			Max Tens		
			Stress (psi)	d (in)	Corner	Stress (psi)	d (in)	Corner
	1029:1 DEAD +	1.000	292.927	1.000	3			
	1030:1 DEAD +	1.000	217.109	1.000	3			
	1031:1 DEAD +	1.000				-72.267	1.000	1
	1032:1 DEAD +	1.000	330.140	1.000	3			
	1033:1 DEAD +	1.000	29.479	1.000	3	-46.138	1.000	1
	1034:1 DEAD +	1.000	478.045	1.000	3			
	1035:1 DEAD +	1.000	177.385	1.000	3			
	1036:1 DEAD +	1.000	254.132	1.000	3			
	1037:1 DEAD +	1.000				-100.179	1.000	1
	1038:0.6 DEAC	1.000	189.503	1.000	3			
	1039:0.6 DEAC	1.000				-88.019	1.000	1
	1040:0.6 DEAC	1.000	41.409	1.000	3			
165	1:DEAD	22.000	158.803	22.000	1	-59.537	22.000	3
	2:LIVE	22.000	257.700	22.000	1	-98.999	22.000	3
	3:SNOW	22.000	860.976	22.000	1	-339.717	22.000	3
	4:WIND+	22.000	702.740	22.000	1	-276.578	22.000	3
	5:WIND-	22.000	212.750	22.000	3	-523.591	22.000	1
	1003:1.4 DEAC	22.000	222.324	22.000	1	-83.352	22.000	3
	1004:1.2 DEAC	22.000	319.414	22.000	1	-120.944	22.000	3
	1005:1.2 DEAC	22.000	621.051	22.000	1	-241.303	22.000	3
	1006:1.2 DEAC	22.000	190.563	22.000	1	-71.445	22.000	3
	1007:1.2 DEAC	22.000	602.884	22.000	1	-229.843	22.000	3
	1008:1.2 DEAC	22.000	954.254	22.000	1	-368.132	22.000	3
	1009:1.2 DEAC	22.000	341.089	22.000	1	-123.468	22.000	3
	1010:1.2 DEAC	22.000	1.57E+3	22.000	1	-614.991	22.000	3
	1011:1.2 DEAC	22.000	1.92E+3	22.000	1	-753.280	22.000	3
	1012:1.2 DEAC	22.000	1.31E+3	22.000	1	-508.617	22.000	3
	1013:1.2 DEAC	22.000	541.933	22.000	1	-209.734	22.000	3
	1014:1.2 DEAC	22.000	34.930	22.000	3	-71.232	22.000	1
	1015:1.2 DEAC	22.000	1.02E+3	22.000	1	-397.522	22.000	3
	1016:1.2 DEAC	22.000	91.806	22.000	3	-204.178	22.000	1
	1017:1.2 DEAC	22.000	1.32E+3	22.000	1	-517.881	22.000	3
	1018:1.2 DEAC	22.000	117.760	0	3	-48.852	0	1
	1019:1.2 DEAC	22.000	893.303	22.000	1	-348.022	22.000	3
	1020:1.2 DEAC	22.000	141.305	22.000	3	-333.028	22.000	1
	1021:0.9 DEAC	22.000	845.662	22.000	1	-330.161	22.000	3
	1022:0.9 DEAC	22.000	159.166	22.000	3	-380.669	22.000	1
	1023:1.2 DEAC	22.000	362.759	22.000	1	-139.388	22.000	3
	1024:0.9 DEAC	22.000	142.923	22.000	1	-53.584	22.000	3
	1025:1 DEAD	22.000	158.803	22.000	1	-59.537	22.000	3
	1026:1 DEAD +	22.000	1.02E+3	22.000	1	-399.254	22.000	3
	1027:1 DEAD +	22.000	416.503	22.000	1	-158.536	22.000	3
	1028:1 DEAD +	22.000	352.078	22.000	1	-133.787	22.000	3
	1029:1 DEAD +	22.000	804.535	22.000	1	-314.325	22.000	3

	Job No <b>23-0005</b>	Sheet No <b>Pg. 38</b>	Rev
	Part		
CONNECTED User: Brett Eisenhauer	Ref		
Job Title Learning Experience Sloping Awning	By	Date 03-Mar-23	Chd
Client Capitol Awning	File Sloped Awning 6ft Analys	Date/Time 17-Mar-2023 09:45	

## Beam Combined Axial and Bending Stresses Summary Cont...

Beam	L/C	Length (in)	Max Comp			Max Tens		
			Stress (psi)	d (in)	Corner	Stress (psi)	d (in)	Corner
	1030:1 DEAD +	22.000	580.447	22.000	1	-225.484	22.000	3
	1031:1 DEAD +	22.000	68.113	22.000	3	-155.352	22.000	1
	1032:1 DEAD +	22.000	879.133	22.000	1	-341.220	22.000	3
	1033:1 DEAD +	22.000	25.776	22.000	3	-40.615	22.000	1
	1034:1 DEAD +	22.000	1.33E+3	22.000	1	-521.758	22.000	3
	1035:1 DEAD +	22.000	411.842	22.000	1	-154.762	22.000	3
	1036:1 DEAD +	22.000	685.858	22.000	1	-266.971	22.000	3
	1037:1 DEAD +	22.000	100.025	22.000	3	-233.891	22.000	1
	1038:0.6 DEAC	22.000	516.926	22.000	1	-201.669	22.000	3
	1039:0.6 DEAC	22.000	91.928	22.000	3	-218.873	22.000	1
	1040:0.6 DEAC	22.000	95.282	22.000	1	-35.722	22.000	3

## Utilization Ratio

Beam	Analysis Property	Design Property	Actual Ratio	Allowable Ratio	Ratio (Act./Allow.)	Clause	L/C	Ax (in <sup>2</sup> )	Iz (in <sup>4</sup> )	Iy (in <sup>4</sup> )	Ix (in <sup>4</sup> )
6	1.000SQX	1.000SQX	0.056	1.000	0.056	AISC- H1-3	011	0.438	0.057	0.057	0.084
36	1.000SQX	1.000SQX	0.000	1.000	0.000	AISC- H2-1	008	0.438	0.057	0.057	0.084
123	1.000SQX	1.000SQX	0.082	1.000	0.082	AISC- H2-1	011	0.438	0.057	0.057	0.084
126	1.000SQX	1.000SQX	0.041	1.000	0.041	AISC- H1-3	011	0.438	0.057	0.057	0.084
127	1.000SQX	1.000SQX	0.113	1.000	0.113	AISC- H1-3	011	0.438	0.057	0.057	0.084
130	1.000SQX	1.000SQX	0.089	1.000	0.089	AISC- H2-1	011	0.438	0.057	0.057	0.084
132	1.000SQX	1.000SQX	0.000	1.000	0.000	AISC- H2-1	008	0.438	0.057	0.057	0.084
139	1.000SQX	1.000SQX	0.163	1.000	0.163	AISC- H2-1	011	0.438	0.057	0.057	0.084
140	1.000SQX	1.000SQX	0.079	1.000	0.079	AISC- H2-1	011	0.438	0.057	0.057	0.084
141	1.000SQX	1.000SQX	0.087	1.000	0.087	AISC- H1-3	011	0.438	0.057	0.057	0.084
142	1.000SQX	1.000SQX	0.149	1.000	0.149	AISC- H2-1	011	0.438	0.057	0.057	0.084
143	1.000SQX	1.000SQX	0.166	1.000	0.166	AISC- H2-1	011	0.438	0.057	0.057	0.084
144	1.000SQX	1.000SQX	0.069	1.000	0.069	AISC- H2-1	011	0.438	0.057	0.057	0.084
145	1.000SQX	1.000SQX	0.237	1.000	0.237	AISC- H2-1	011	0.438	0.057	0.057	0.084
146	1.000SQX	1.000SQX	0.271	1.000	0.271	AISC- H2-1	011	0.438	0.057	0.057	0.084
147	1.000SQX	1.000SQX	0.256	1.000	0.256	AISC- H2-1	011	0.438	0.057	0.057	0.084
148	1.000SQX	1.000SQX	0.265	1.000	0.265	AISC- H2-1	011	0.438	0.057	0.057	0.084
149	1.000SQX	1.000SQX	0.244	1.000	0.244	AISC- H2-1	011	0.438	0.057	0.057	0.084
150	1.000SQX	1.000SQX	0.110	1.000	0.110	AISC- H2-1	011	0.438	0.057	0.057	0.084
151	1.000SQX	1.000SQX	0.108	1.000	0.108	AISC- H2-1	011	0.438	0.057	0.057	0.084
152	1.000SQX	1.000SQX	0.178	1.000	0.178	AISC- H2-1	011	0.438	0.057	0.057	0.084
153	1.000SQX	1.000SQX	0.147	1.000	0.147	AISC- H2-1	011	0.438	0.057	0.057	0.084
154	1.000SQX	1.000SQX	0.160	1.000	0.160	AISC- H2-1	011	0.438	0.057	0.057	0.084
155	1.000SQX	1.000SQX	0.179	1.000	0.179	AISC- H1-3	011	0.438	0.057	0.057	0.084
156	1.000SQX	1.000SQX	0.077	1.000	0.077	AISC- H2-1	011	0.438	0.057	0.057	0.084
157	1.000SQX	1.000SQX	0.088	1.000	0.088	AISC- H1-3	011	0.438	0.057	0.057	0.084
158	1.000SQX	1.000SQX	0.081	1.000	0.081	AISC- H2-1	011	0.438	0.057	0.057	0.084

CONNECTED User: Brett Eisenhauer

Job Title Learning Experience Sloping Awning

Part

Ref

By Date 03-Mar-23 Chd

Client Capitol Awning

File Sloped Awning 6ft Analys Date/Time 17-Mar-2023 09:45

## Utilization Ratio Cont...

Beam	Analysis Property	Design Property	Actual Ratio	Allowable Ratio	Ratio (Act./Allow.)	Clause	L/C	Ax (in <sup>2</sup> )	Iz (in <sup>4</sup> )	Iy (in <sup>4</sup> )	Ix (in <sup>4</sup> )
160	1.000SQX	1.000SQX	0.030	1.000	0.030	AISC- H1-3	011	0.438	0.057	0.057	0.084
161	1.000SQX	1.000SQX	0.067	1.000	0.067	AISC- H1-3	011	0.438	0.057	0.057	0.084
162	1.000SQX	1.000SQX	0.050	1.000	0.050	AISC- H1-3	011	0.438	0.057	0.057	0.084
163	1.000SQX	1.000SQX	0.043	1.000	0.043	AISC- H1-3	011	0.438	0.057	0.057	0.084
164	1.000SQX	1.000SQX	0.032	1.000	0.032	AISC- H1-3	011	0.438	0.057	0.057	0.084
165	1.000SQX	1.000SQX	0.103	1.000	0.103	AISC- H1-3	011	0.438	0.057	0.057	0.084

## Failed Members

There is no data of this type.

## Statics Check Results

L/C		FX (kip)	FY (kip)	FZ (kip)	MX (kip·ft)	MY (kip·ft)	MZ (kip·ft)
1:DEAD	Loads	0	-0.067	-0.000	0.198	0	0
1:DEAD	Reactions	0	0.067	0.000	-0.198	0	0
	Difference	0	-0.000	0.000	0.000	0	0
2:LIVE	Loads	0	-0.103	-0.000	0.308	0	0
2:LIVE	Reactions	0	0.103	0.000	-0.308	0	0
	Difference	0	-0.000	-0.000	0.000	0	0
3:SNOW	Loads	0	-0.323	-0.000	0.982	0	0
3:SNOW	Reactions	0	0.323	0.000	-0.982	0	0
	Difference	0	-0.000	0.000	0.000	0	0
4:WIND+	Loads	0	-0.265	-0.000	0.806	0	0
4:WIND+	Reactions	0	0.265	0.000	-0.806	0	0
	Difference	0	-0.000	0.000	0.000	0	0
5:WIND-	Loads	0	0.181	-0.000	-0.565	0	0
5:WIND-	Reactions	0	-0.181	0.000	0.565	0	0
	Difference	0	0.000	-0.000	-0.000	0	0