

CONNECTED User: Brett Eisenhauer

Job Title Learning Experience Sloping Awning

Client Capitol Awning

Job Information

	Engineer	Checked	Approved
Name:			
Date:	03-Mar-23		

Project ID	
Project Name	

Structure Type	SPACE FRAME
----------------	-------------

Number of Nodes	29	Highest Node	99
Number of Elements	33	Highest Beam	165

Number of Basic Load Cases	5
Number of Combination Load Cases	38

Included in this printout are data for:

All	The Whole Structure
-----	---------------------

Included in this printout are results for load cases:

Type	L/C	Name
Primary	1	DEAD
Primary	2	LIVE
Primary	3	SNOW
Primary	4	WIND+
Primary	5	WIND-
Combination	1003	1.4 DEAD
Combination	1004	1.2 DEAD + 0.5 ROOF LIVE
Combination	1005	1.2 DEAD + 0.5 SNOW
Combination	1006	1.2 DEAD
Combination	1007	1.2 DEAD + 1.6 ROOF LIVE
Combination	1008	1.2 DEAD + 1.6 ROOF LIVE + 0.5 WIND 1
Combination	1009	1.2 DEAD + 1.6 ROOF LIVE + 0.5 WIND 2
Combination	1010	1.2 DEAD + 1.6 SNOW
Combination	1011	1.2 DEAD + 0.5 WIND + 1.6 SNOW 1
Combination	1012	1.2 DEAD + 0.5 WIND + 1.6 SNOW 2
Combination	1013	1.2 DEAD + 0.5 WIND 1
Combination	1014	1.2 DEAD + 0.5 WIND 2
Combination	1015	1.2 DEAD + 0.5 ROOF LIVE + 1 WIND 1
Combination	1016	1.2 DEAD + 0.5 ROOF LIVE + 1 WIND 2
Combination	1017	1.2 DEAD + 1 WIND + 0.5 SNOW 1
Combination	1018	1.2 DEAD + 1 WIND + 0.5 SNOW 2
Combination	1019	1.2 DEAD + 1 WIND 1
Combination	1020	1.2 DEAD + 1 WIND 2
Combination	1021	0.9 DEAD + 1 WIND 1
Combination	1022	0.9 DEAD + 1 WIND 2
Combination	1023	1.2 DEAD + 0.2 SNOW

CONNECTED User: Brett Eisenhauer

Part

Job Title Learning Experience Sloping Awning

Ref

By

Date03-Mar-23

Chd

Client Capitol Awning

File Sloped Awning 6ft Analys

Date/Time 10-May-2023 14:41

Job Information Cont...

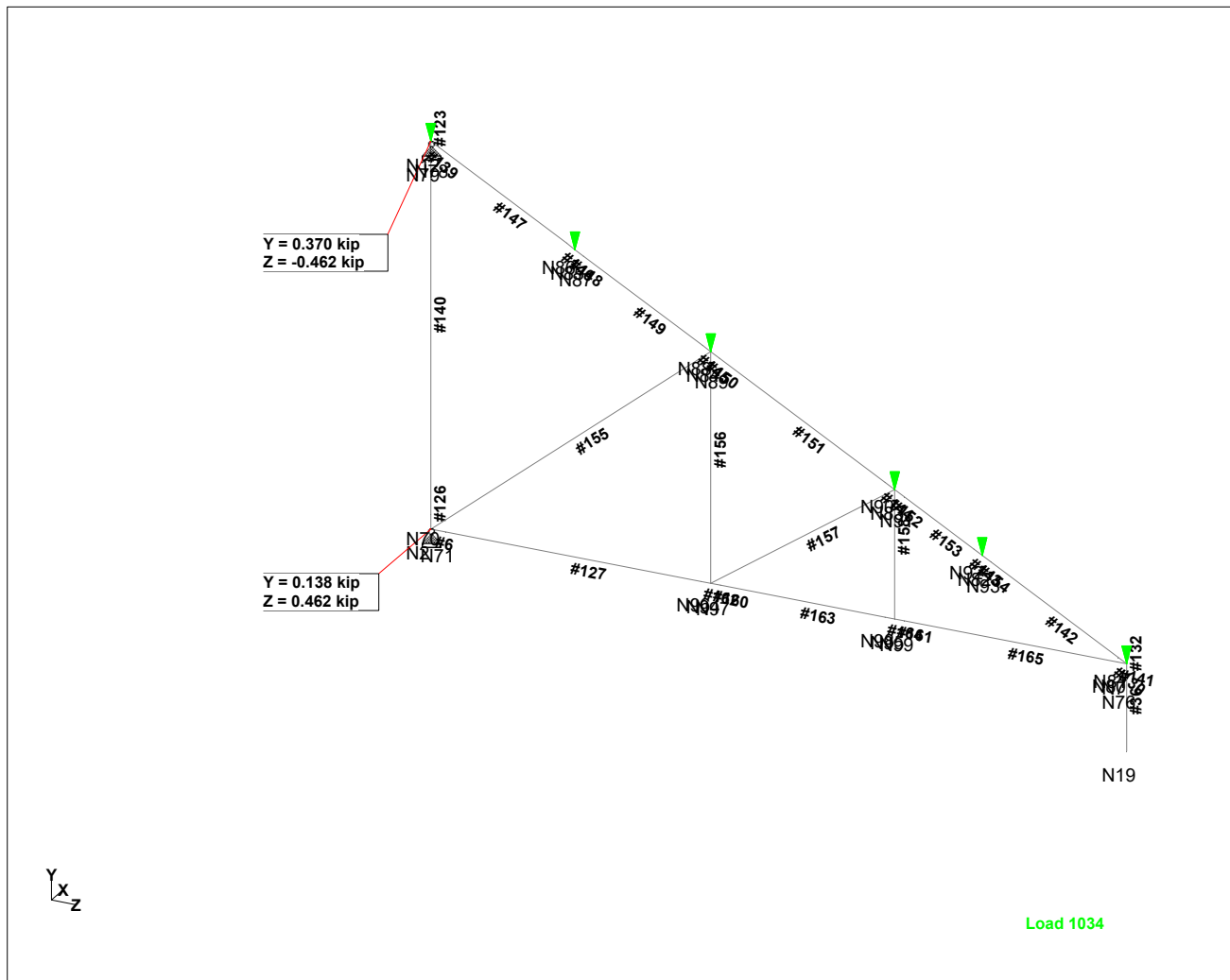
Type	L/C	Name
Combination	1024	0.9 DEAD
Combination	1025	1 DEAD
Combination	1026	1 DEAD + 1 SNOW
Combination	1027	1 DEAD + 1 ROOF LIVE
Combination	1028	1 DEAD + 0.75 ROOF LIVE
Combination	1029	1 DEAD + 0.75 SNOW
Combination	1030	1 DEAD + 0.6 WIND 1
Combination	1031	1 DEAD + 0.6 WIND 2
Combination	1032	1 DEAD + 0.75 ROOF LIVE + 0.75 WIND 1
Combination	1033	1 DEAD + 0.75 ROOF LIVE + 0.75 WIND 2
Combination	1034	1 DEAD + 0.75 WIND + 0.75 SNOW 1
Combination	1035	1 DEAD + 0.75 WIND + 0.75 SNOW 2
Combination	1036	1 DEAD + 0.75 WIND 1
Combination	1037	1 DEAD + 0.75 WIND 2
Combination	1038	0.6 DEAD + 0.6 WIND 1
Combination	1039	0.6 DEAD + 0.6 WIND 2
Combination	1040	0.6 DEAD

Job No 23-0005	Sheet No 3	Rev
Part		
Ref		
By	Date 03-Mar-23	Chd
File Sloped Awning 6ft Analys	Date/Time 10-May-2023 14:41	

CONNECTED User: Brett Eisenhauer

Job Title Learning Experience Sloping Awning

Client Capitol Awning

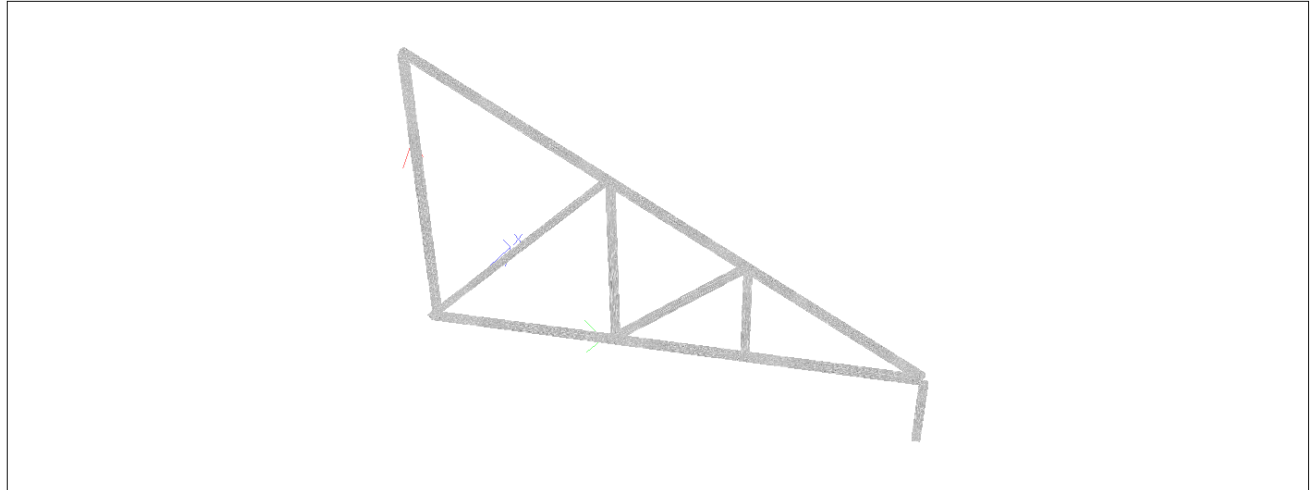


Maximum Reactions LC: 1034 1 DEAD + 0.75 WIND + 0.75 SNOW 1

CONNECTED User: Brett Eisenhauer

Job Title Learning Experience Sloping Awning

Client Capitol Awning



3D Rendered View

Nodes

Node	X (in)	Y (in)	Z (in)
2	0	0	0
7	0	0	72.000
12	0	40.000	0
19	0	-9.000	72.000
70	0	1.500	0
71	0	0	1.500
76	0	-1.500	72.000
78	0	39.514	0.874
79	0	39.000	0
80	0	0	71.000
81	0	0.486	71.126
82	0	8.291	57.076
83	0	13.334	48.000
84	0	23.903	28.975
85	0	31.709	14.925
86	0	32.194	14.050
87	0	31.223	15.799
88	0	24.389	28.101
89	0	23.417	29.849
90	0	13.889	47.000
91	0	12.778	49.000
92	0	8.777	56.201
93	0	7.806	57.950
94	0	0	28.975
95	0	0	48.000
96	0	0	27.975
97	0	0	29.975
98	0	0	47.000

CONNECTED User: Brett Eisenhauer

Job Title Learning Experience Sloping Awning

Part

Ref

By Date 03-Mar-23 Chd

Client Capitol Awning

File Sloped Awning 6ft Analys Date/Time 10-May-2023 14:41

Nodes Cont...

Node	X (in)	Y (in)	Z (in)
99	0	0	49.000

Reaction Summary

	Node	L/C	Horizontal FX (kip)	Vertical FY (kip)	Horizontal FZ (kip)	Moment MX MY MZ (kip-ft) (kip-ft) (kip-ft)		
Max FX	2	1:DEAD	0	0.020	0.059	0	0	0
Min FX	2	1:DEAD	0	0.020	0.059	0	0	0
Max FY	12	1011:1.2 DEAC	0	0.532	-0.664	0	0	0
Min FY	12	5:WIND-	0	-0.137	0.169	0	0	0
Max FZ	2	1011:1.2 DEAC	0	0.197	0.664	0	0	0
Min FZ	12	1011:1.2 DEAC	0	0.532	-0.664	0	0	0
Max MX	2	1:DEAD	0	0.020	0.059	0	0	0
Min MX	2	1:DEAD	0	0.020	0.059	0	0	0
Max MY	2	1:DEAD	0	0.020	0.059	0	0	0
Min MY	2	1:DEAD	0	0.020	0.059	0	0	0
Max MZ	2	1:DEAD	0	0.020	0.059	0	0	0
Min MZ	2	1:DEAD	0	0.020	0.059	0	0	0

Supports

Node	X (kip/in)	Y (kip/in)	Z (kip/in)	rX (kip-ft/deg)	rY (kip-ft/deg)	rZ (kip-ft/deg)
2	Fixed	Fixed	Fixed	-	-	-
12	Fixed	Fixed	Fixed	-	-	-

Primary Load Cases

Number	Name	Type
1	DEAD	Dead
2	LIVE	Roof Live
3	SNOW	Snow
4	WIND+	Wind
5	WIND-	Wind

CONNECTED User: Brett Eisenhauer

Job Title Learning Experience Sloping Awning

Part

Ref

By Date 03-Mar-23 Chd

Client Capitol Awning

File Sloped Awning 6ft Analys Date/Time 10-May-2023 14:41

Beam Combined Axial and Bending Stresses Summary

Beam	L/C	Length (in)	Max Comp			Max Tens		
			Stress (psi)	d (in)	Corner	Stress (psi)	d (in)	Corner
6	1:DEAD	1.500	107.060	0	1			
	2:LIVE	1.500	168.455	0	1			
	3:SNOW	1.500	542.964	0	1			
	4:WIND+	1.500	444.732	0	1			
	5:WIND-	1.500				-319.216	1.500	3
	1003:1.4 DEAC	1.500	149.884	0	1			
	1004:1.2 DEAC	1.500	212.700	0	1			
	1005:1.2 DEAC	1.500	399.954	0	1			
	1006:1.2 DEAC	1.500	128.472	0	1			
	1007:1.2 DEAC	1.500	398.000	0	1			
	1008:1.2 DEAC	1.500	620.366	0	1			
	1009:1.2 DEAC	1.500	239.717	0	1			
	1010:1.2 DEAC	1.500	997.215	0	1			
	1011:1.2 DEAC	1.500	1.22E+3	0	1			
	1012:1.2 DEAC	1.500	838.932	0	1			
	1013:1.2 DEAC	1.500	350.838	0	1			
	1014:1.2 DEAC	1.500				-39.654	1.500	3
	1015:1.2 DEAC	1.500	657.432	0	1			
	1016:1.2 DEAC	1.500				-118.905	1.500	3
	1017:1.2 DEAC	1.500	844.687	0	1			
	1018:1.2 DEAC	1.500	83.389	0	1			
	1019:1.2 DEAC	1.500	573.204	0	1			
	1020:1.2 DEAC	1.500				-199.261	1.500	3
	1021:0.9 DEAC	1.500	541.086	0	1			
	1022:0.9 DEAC	1.500				-229.250	1.500	3
	1023:1.2 DEAC	1.500	237.065	0	1			
	1024:0.9 DEAC	1.500	96.354	0	1			
	1025:1 DEAD	1.500	107.060	0	1			
	1026:1 DEAD +	1.500	650.024	0	1			
	1027:1 DEAD +	1.500	275.515	0	1			
	1028:1 DEAD +	1.500	233.401	0	1			
	1029:1 DEAD +	1.500	514.283	0	1			
	1030:1 DEAD +	1.500	373.900	0	1			
	1031:1 DEAD +	1.500				-91.568	1.500	3
	1032:1 DEAD +	1.500	566.951	0	1			
	1033:1 DEAD +	1.500	4.680	1.500	1	-18.916	1.500	3
	1034:1 DEAD +	1.500	847.833	0	1			
	1035:1 DEAD +	1.500	276.859	0	1			
	1036:1 DEAD +	1.500	440.609	0	1			
	1037:1 DEAD +	1.500				-139.450	1.500	3
	1038:0.6 DEAC	1.500	331.076	0	1			
	1039:0.6 DEAC	1.500				-131.552	1.500	3
	1040:0.6 DEAC	1.500	64.236	0	1			
36	1:DEAD	7.500	0.000	0	1	-0.735	7.500	1

CONNECTED User: Brett Eisenhauer

Job Title Learning Experience Sloping Awning

Part

Ref

By Date 03-Mar-23 Chd

Client Capitol Awning

File Sloped Awning 6ft Analys Date/Time 10-May-2023 14:41

Beam Combined Axial and Bending Stresses Summary Cont...

Beam	L/C	Length (in)	Max Comp			Max Tens		
			Stress (psi)	d (in)	Corner	Stress (psi)	d (in)	Corner
	2:LIVE	7.500	0.000	0	2	-0.735	7.500	1
	3:SNOW	7.500				-0.735	7.500	1
	4:WIND+	7.500	0.000	0	1	-0.735	7.500	1
	5:WIND-	7.500				-0.735	7.500	1
	1003:1.4 DEAC	7.500	0.000	0	1	-1.029	7.500	1
	1004:1.2 DEAC	7.500	0.000	0	1	-1.249	7.500	1
	1005:1.2 DEAC	7.500				-1.249	7.500	1
	1006:1.2 DEAC	7.500	0.000	0	1	-0.882	7.500	1
	1007:1.2 DEAC	7.500	0.000	0	2	-2.058	7.500	1
	1008:1.2 DEAC	7.500	0.000	0	1	-2.425	7.500	1
	1009:1.2 DEAC	7.500	0.000	0	2	-2.425	7.500	1
	1010:1.2 DEAC	7.500				-2.058	7.500	1
	1011:1.2 DEAC	7.500				-2.425	7.500	1
	1012:1.2 DEAC	7.500				-2.425	7.500	1
	1013:1.2 DEAC	7.500	0.000	0	1	-1.249	7.500	1
	1014:1.2 DEAC	7.500	0.000	0	1	-1.249	7.500	1
	1015:1.2 DEAC	7.500	0.000	0	1	-1.985	7.500	1
	1016:1.2 DEAC	7.500	0.000	0	1	-1.985	7.500	1
	1017:1.2 DEAC	7.500				-1.985	7.500	1
	1018:1.2 DEAC	7.500				-1.985	7.500	1
	1019:1.2 DEAC	7.500	0.000	0	1	-1.617	7.500	1
	1020:1.2 DEAC	7.500	0.000	0	1	-1.617	7.500	1
	1021:0.9 DEAC	7.500	0.000	0	1	-1.396	7.500	1
	1022:0.9 DEAC	7.500	0.000	0	1	-1.396	7.500	1
	1023:1.2 DEAC	7.500				-1.029	7.500	1
	1024:0.9 DEAC	7.500	0.000	0	1	-0.661	7.500	1
	1025:1 DEAD	7.500	0.000	0	1	-0.735	7.500	1
	1026:1 DEAD +	7.500				-1.470	7.500	1
	1027:1 DEAD +	7.500				-1.470	7.500	1
	1028:1 DEAD +	7.500	0.000	0	1	-1.286	7.500	1
	1029:1 DEAD +	7.500				-1.286	7.500	1
	1030:1 DEAD +	7.500	0.000	0	1	-1.176	7.500	1
	1031:1 DEAD +	7.500	0.000	0	1	-1.176	7.500	1
	1032:1 DEAD +	7.500	0.000	0	1	-1.837	7.500	1
	1033:1 DEAD +	7.500	0.000	0	1	-1.837	7.500	1
	1034:1 DEAD +	7.500				-1.837	7.500	1
	1035:1 DEAD +	7.500				-1.837	7.500	1
	1036:1 DEAD +	7.500	0.000	0	1	-1.286	7.500	1
	1037:1 DEAD +	7.500	0.000	0	1	-1.286	7.500	1
	1038:0.6 DEAC	7.500	0.000	0	1	-0.882	7.500	1
	1039:0.6 DEAC	7.500	0.000	0	1	-0.882	7.500	1
	1040:0.6 DEAC	7.500	0.000	0	1	-0.441	7.500	1
123	1:DEAD	1.000	167.081	0	2	-171.001	0	1
	2:LIVE	1.000	264.582	0	2	-268.502	0	1

CONNECTED User: Brett Eisenhauer

Job Title Learning Experience Sloping Awning

Part

Ref

By Date 03-Mar-23 Chd

Client Capitol Awning

File Sloped Awning 6ft Analys Date/Time 10-May-2023 14:41

Beam Combined Axial and Bending Stresses Summary Cont...

Beam	L/C	Length (in)	Max Comp			Max Tens		
			Stress (psi)	d (in)	Corner	Stress (psi)	d (in)	Corner
	3:SNOW	1.000	859.337	0	2	-863.257	0	1
	4:WIND+	1.000	703.336	0	2	-707.256	0	1
	5:WIND-	1.000	501.755	0	1	-505.675	0	2
	1003:1.4 DEAC	1.000	233.914	0	2	-239.402	0	1
	1004:1.2 DEAC	1.000	332.788	0	2	-339.452	0	1
	1005:1.2 DEAC	1.000	630.166	0	2	-636.830	0	1
	1006:1.2 DEAC	1.000	200.497	0	2	-205.201	0	1
	1007:1.2 DEAC	1.000	623.829	0	2	-634.805	0	1
	1008:1.2 DEAC	1.000	975.497	0	2	-988.433	0	1
	1009:1.2 DEAC	1.000	370.991	0	2	-383.927	0	1
	1010:1.2 DEAC	1.000	1.58E+3	0	2	-1.59E+3	0	1
	1011:1.2 DEAC	1.000	1.93E+3	0	2	-1.94E+3	0	1
	1012:1.2 DEAC	1.000	1.32E+3	0	2	-1.34E+3	0	1
	1013:1.2 DEAC	1.000	552.165	0	2	-558.829	0	1
	1014:1.2 DEAC	1.000	45.676	0	1	-52.340	0	2
	1015:1.2 DEAC	1.000	1.04E+3	0	2	-1.05E+3	0	1
	1016:1.2 DEAC	1.000	162.302	0	1	-172.886	0	2
	1017:1.2 DEAC	1.000	1.33E+3	0	2	-1.34E+3	0	1
	1018:1.2 DEAC	1.000	124.491	0	2	-135.075	0	1
	1019:1.2 DEAC	1.000	903.833	0	2	-912.457	0	1
	1020:1.2 DEAC	1.000	296.553	0	1	-305.177	0	2
	1021:0.9 DEAC	1.000	853.709	0	2	-861.157	0	1
	1022:0.9 DEAC	1.000	347.854	0	1	-355.302	0	2
	1023:1.2 DEAC	1.000	372.365	0	2	-377.853	0	1
	1024:0.9 DEAC	1.000	150.373	0	2	-153.901	0	1
	1025:1 DEAD	1.000	167.081	0	2	-171.001	0	1
	1026:1 DEAD +	1.000	1.03E+3	0	2	-1.03E+3	0	1
	1027:1 DEAD +	1.000	431.663	0	2	-439.503	0	1
	1028:1 DEAD +	1.000	365.518	0	2	-372.378	0	1
	1029:1 DEAD +	1.000	811.584	0	2	-818.444	0	1
	1030:1 DEAD +	1.000	589.083	0	2	-595.355	0	1
	1031:1 DEAD +	1.000	130.052	0	1	-136.324	0	2
	1032:1 DEAD +	1.000	893.020	0	2	-902.820	0	1
	1033:1 DEAD +	1.000	4.803	1.000	1	-14.113	1.000	2
	1034:1 DEAD +	1.000	1.34E+3	0	2	-1.35E+3	0	1
	1035:1 DEAD +	1.000	432.328	0	2	-442.128	0	1
	1036:1 DEAD +	1.000	694.583	0	2	-701.443	0	1
	1037:1 DEAD +	1.000	205.315	0	1	-212.175	0	2
	1038:0.6 DEAC	1.000	522.250	0	2	-526.954	0	1
	1039:0.6 DEAC	1.000	198.452	0	1	-203.156	0	2
	1040:0.6 DEAC	1.000	100.249	0	2	-102.601	0	1
126	1:DEAD	1.500	96.237	1.500	1	-92.317	1.500	2
	2:LIVE	1.500	141.905	1.500	1	-137.985	1.500	2
	3:SNOW	1.500	420.476	1.500	1	-416.556	1.500	2

CONNECTED User: Brett Eisenhauer

Job Title Learning Experience Sloping Awning

Part

Ref

By Date 03-Mar-23 Chd

Client Capitol Awning

File Sloped Awning 6ft Analys Date/Time 10-May-2023 14:41

Beam Combined Axial and Bending Stresses Summary Cont...

Beam	L/C	Length (in)	Max Comp			Max Tens		
			Stress (psi)	d (in)	Corner	Stress (psi)	d (in)	Corner
	4:WIND+	1.500	347.408	1.500	1	-343.488	1.500	2
	5:WIND-	1.500	222.787	1.500	2	-218.867	1.500	1
	1003:1.4 DEAC	1.500	134.732	1.500	1	-129.244	1.500	2
	1004:1.2 DEAC	1.500	186.437	1.500	1	-179.773	1.500	2
	1005:1.2 DEAC	1.500	325.723	1.500	1	-319.059	1.500	2
	1006:1.2 DEAC	1.500	115.485	1.500	1	-110.781	1.500	2
	1007:1.2 DEAC	1.500	342.533	1.500	1	-331.557	1.500	2
	1008:1.2 DEAC	1.500	516.237	1.500	1	-503.301	1.500	2
	1009:1.2 DEAC	1.500	233.099	1.500	1	-220.163	1.500	2
	1010:1.2 DEAC	1.500	788.246	1.500	1	-777.270	1.500	2
	1011:1.2 DEAC	1.500	961.950	1.500	1	-949.014	1.500	2
	1012:1.2 DEAC	1.500	678.812	1.500	1	-665.876	1.500	2
	1013:1.2 DEAC	1.500	289.189	1.500	1	-282.525	1.500	2
	1014:1.2 DEAC	1.500	7.537	0	1	-1.373	0	2
	1015:1.2 DEAC	1.500	533.845	1.500	1	-523.261	1.500	2
	1016:1.2 DEAC	1.500	43.014	1.500	2	-32.430	1.500	1
	1017:1.2 DEAC	1.500	673.131	1.500	1	-662.547	1.500	2
	1018:1.2 DEAC	1.500	106.856	1.500	1	-96.272	1.500	2
	1019:1.2 DEAC	1.500	462.893	1.500	1	-454.269	1.500	2
	1020:1.2 DEAC	1.500	112.006	1.500	2	-103.382	1.500	1
	1021:0.9 DEAC	1.500	434.022	1.500	1	-426.574	1.500	2
	1022:0.9 DEAC	1.500	139.702	1.500	2	-132.254	1.500	1
	1023:1.2 DEAC	1.500	199.580	1.500	1	-194.092	1.500	2
	1024:0.9 DEAC	1.500	86.614	1.500	1	-83.086	1.500	2
	1025:1 DEAD	1.500	96.237	1.500	1	-92.317	1.500	2
	1026:1 DEAD +	1.500	516.713	1.500	1	-508.873	1.500	2
	1027:1 DEAD +	1.500	238.142	1.500	1	-230.302	1.500	2
	1028:1 DEAD +	1.500	202.666	1.500	1	-195.806	1.500	2
	1029:1 DEAD +	1.500	411.594	1.500	1	-404.734	1.500	2
	1030:1 DEAD +	1.500	304.682	1.500	1	-298.410	1.500	2
	1031:1 DEAD +	1.500	41.355	1.500	2	-35.083	1.500	1
	1032:1 DEAD +	1.500	463.222	1.500	1	-453.422	1.500	2
	1033:1 DEAD +	1.500	38.516	1.500	1	-28.716	1.500	2
	1034:1 DEAD +	1.500	672.150	1.500	1	-662.350	1.500	2
	1035:1 DEAD +	1.500	247.444	1.500	1	-237.644	1.500	2
	1036:1 DEAD +	1.500	356.793	1.500	1	-349.933	1.500	2
	1037:1 DEAD +	1.500	74.773	1.500	2	-67.913	1.500	1
	1038:0.6 DEAC	1.500	266.187	1.500	1	-261.483	1.500	2
	1039:0.6 DEAC	1.500	78.282	1.500	2	-73.578	1.500	1
	1040:0.6 DEAC	1.500	57.742	1.500	1	-55.390	1.500	2
127	1:DEAD	26.475	114.114	26.475	3			
	2:LIVE	26.475	163.488	26.475	3			
	3:SNOW	26.475	531.290	0	1			
	4:WIND+	26.475	434.089	0	1			

CONNECTED User: Brett Eisenhauer

Job Title Learning Experience Sloping Awning

Part

Ref

By Date 03-Mar-23 Chd

Client Capitol Awning

File Sloped Awning 6ft Analys Date/Time 10-May-2023 14:41

Beam Combined Axial and Bending Stresses Summary Cont...

Beam	L/C	Length (in)	Max Comp			Max Tens		
			Stress (psi)	d (in)	Corner	Stress (psi)	d (in)	Corner
	5:WIND-	26.475				-322.101	4.412	3
	1003:1.4 DEAC	26.475	159.760	26.475	3			
	1004:1.2 DEAC	26.475	218.681	26.475	3			
	1005:1.2 DEAC	26.475	385.599	0	1			
	1006:1.2 DEAC	26.475	136.937	26.475	3			
	1007:1.2 DEAC	26.475	398.518	26.475	3			
	1008:1.2 DEAC	26.475	594.139	0	1			
	1009:1.2 DEAC	26.475	285.236	26.475	3			
	1010:1.2 DEAC	26.475	970.018	0	1			
	1011:1.2 DEAC	26.475	1.19E+3	0	1			
	1012:1.2 DEAC	26.475	810.410	0	1			
	1013:1.2 DEAC	26.475	336.999	0	1			
	1014:1.2 DEAC	26.475	23.656	26.475	3	-77.558	26.475	1
	1015:1.2 DEAC	26.475	634.400	0	1			
	1016:1.2 DEAC	26.475				-170.042	26.475	1
	1017:1.2 DEAC	26.475	819.688	0	1			
	1018:1.2 DEAC	26.475	142.707	26.475	3	-14.786	26.475	1
	1019:1.2 DEAC	26.475	554.043	0	1			
	1020:1.2 DEAC	26.475				-227.228	8.825	3
	1021:0.9 DEAC	26.475	524.055	0	1			
	1022:0.9 DEAC	26.475				-249.912	6.619	3
	1023:1.2 DEAC	26.475	229.870	26.475	3			
	1024:0.9 DEAC	26.475	102.703	26.475	3			
	1025:1 DEAD	26.475	114.114	26.475	3			
	1026:1 DEAD +	26.475	631.252	0	1			
	1027:1 DEAD +	26.475	277.602	26.475	3			
	1028:1 DEAD +	26.475	236.730	26.475	3			
	1029:1 DEAD +	26.475	498.429	0	1			
	1030:1 DEAD +	26.475	360.415	0	1			
	1031:1 DEAD +	26.475				-118.450	26.475	1
	1032:1 DEAD +	26.475	546.063	0	1			
	1033:1 DEAD +	26.475	66.808	26.475	3	-81.044	26.475	1
	1034:1 DEAD +	26.475	823.996	0	1			
	1035:1 DEAD +	26.475	292.692	26.475	3			
	1036:1 DEAD +	26.475	425.529	0	1			
	1037:1 DEAD +	26.475				-162.886	8.825	3
	1038:0.6 DEAC	26.475	320.431	0	1			
	1039:0.6 DEAC	26.475				-145.380	8.825	3
	1040:0.6 DEAC	26.475	68.469	26.475	3			
130	1:DEAD	1.000	60.218	0	3	-166.762	0	1
	2:LIVE	1.000	102.383	0	3	-272.929	0	1
	3:SNOW	1.000	359.593	0	3	-920.545	0	1
	4:WIND+	1.000	292.128	0	3	-750.679	0	1
	5:WIND-	1.000	565.788	0	1	-230.725	0	3

CONNECTED User: Brett Eisenhauer

Job Title Learning Experience Sloping Awning

Part

Ref

By Date 03-Mar-23 Chd

Client Capitol Awning

File Sloped Awning 6ft Analys Date/Time 10-May-2023 14:41

Beam Combined Axial and Bending Stresses Summary Cont...

Beam	L/C	Length (in)	Max Comp			Max Tens		
			Stress (psi)	d (in)	Corner	Stress (psi)	d (in)	Corner
	1003:1.4 DEAC	1.000	84.305	0	3	-233.467	0	1
	1004:1.2 DEAC	1.000	123.453	0	3	-336.579	0	1
	1005:1.2 DEAC	1.000	252.058	0	3	-660.387	0	1
	1006:1.2 DEAC	1.000	72.261	0	3	-200.114	0	1
	1007:1.2 DEAC	1.000	236.075	0	3	-636.800	0	1
	1008:1.2 DEAC	1.000	382.139	0	3	-1.01E+3	0	1
	1009:1.2 DEAC	1.000	120.713	0	3	-353.906	0	1
	1010:1.2 DEAC	1.000	647.611	0	3	-1.67E+3	0	1
	1011:1.2 DEAC	1.000	793.675	0	3	-2.05E+3	0	1
	1012:1.2 DEAC	1.000	532.248	0	3	-1.39E+3	0	1
	1013:1.2 DEAC	1.000	218.326	0	3	-575.454	0	1
	1014:1.2 DEAC	1.000	82.780	0	1	-43.101	0	3
	1015:1.2 DEAC	1.000	415.582	0	3	-1.09E+3	0	1
	1016:1.2 DEAC	1.000	229.209	0	1	-107.271	0	3
	1017:1.2 DEAC	1.000	544.186	0	3	-1.41E+3	0	1
	1018:1.2 DEAC	1.000	21.334	0	3	-94.599	0	1
	1019:1.2 DEAC	1.000	364.390	0	3	-950.793	0	1
	1020:1.2 DEAC	1.000	365.674	0	1	-158.463	0	3
	1021:0.9 DEAC	1.000	346.325	0	3	-900.764	0	1
	1022:0.9 DEAC	1.000	415.702	0	1	-176.529	0	3
	1023:1.2 DEAC	1.000	144.180	0	3	-384.223	0	1
	1024:0.9 DEAC	1.000	54.196	0	3	-150.086	0	1
	1025:1 DEAD	1.000	60.218	0	3	-166.762	0	1
	1026:1 DEAD +	1.000	419.811	0	3	-1.09E+3	0	1
	1027:1 DEAD +	1.000	162.601	0	3	-439.691	0	1
	1028:1 DEAD +	1.000	137.005	0	3	-371.458	0	1
	1029:1 DEAD +	1.000	329.913	0	3	-857.171	0	1
	1030:1 DEAD +	1.000	235.495	0	3	-617.169	0	1
	1031:1 DEAD +	1.000	172.711	0	1	-78.217	0	3
	1032:1 DEAD +	1.000	356.102	0	3	-934.467	0	1
	1033:1 DEAD +	1.000	52.883	0	1	-36.038	0	3
	1034:1 DEAD +	1.000	549.009	0	3	-1.42E+3	0	1
	1035:1 DEAD +	1.000	156.869	0	3	-432.830	0	1
	1036:1 DEAD +	1.000	279.314	0	3	-729.771	0	1
	1037:1 DEAD +	1.000	257.579	0	1	-112.826	0	3
	1038:0.6 DEAC	1.000	211.408	0	3	-550.464	0	1
	1039:0.6 DEAC	1.000	239.416	0	1	-102.304	0	3
	1040:0.6 DEAC	1.000	36.131	0	3	-100.057	0	1
132	1:DEAD	1.500				-0.882	1.500	1
	2:LIVE	1.500				-0.882	1.500	1
	3:SNOW	1.500				-0.882	1.500	1
	4:WIND+	1.500				-0.882	1.500	1
	5:WIND-	1.500				-0.882	1.500	1
	1003:1.4 DEAC	1.500				-1.235	1.500	1

CONNECTED User: Brett Eisenhauer

Job Title Learning Experience Sloping Awning

Part

Ref

By Date 03-Mar-23 Chd

Client Capitol Awning

File Sloped Awning 6ft Analys Date/Time 10-May-2023 14:41

Beam Combined Axial and Bending Stresses Summary Cont...

Beam	L/C	Length (in)	Max Comp			Max Tens		
			Stress (psi)	d (in)	Corner	Stress (psi)	d (in)	Corner
	1004:1.2 DEAC	1.500				-1.499	1.500	1
	1005:1.2 DEAC	1.500				-1.499	1.500	1
	1006:1.2 DEAC	1.500				-1.058	1.500	1
	1007:1.2 DEAC	1.500				-2.470	1.500	1
	1008:1.2 DEAC	1.500				-2.911	1.500	1
	1009:1.2 DEAC	1.500				-2.911	1.500	1
	1010:1.2 DEAC	1.500				-2.470	1.500	1
	1011:1.2 DEAC	1.500				-2.911	1.500	1
	1012:1.2 DEAC	1.500				-2.911	1.500	1
	1013:1.2 DEAC	1.500				-1.499	1.500	1
	1014:1.2 DEAC	1.500				-1.499	1.500	1
	1015:1.2 DEAC	1.500				-2.381	1.500	1
	1016:1.2 DEAC	1.500				-2.381	1.500	1
	1017:1.2 DEAC	1.500				-2.381	1.500	1
	1018:1.2 DEAC	1.500				-2.381	1.500	1
	1019:1.2 DEAC	1.500				-1.940	1.500	1
	1020:1.2 DEAC	1.500				-1.940	1.500	1
	1021:0.9 DEAC	1.500				-1.676	1.500	1
	1022:0.9 DEAC	1.500				-1.676	1.500	1
	1023:1.2 DEAC	1.500				-1.235	1.500	1
	1024:0.9 DEAC	1.500				-0.794	1.500	1
	1025:1 DEAD	1.500				-0.882	1.500	1
	1026:1 DEAD +	1.500				-1.764	1.500	1
	1027:1 DEAD +	1.500				-1.764	1.500	1
	1028:1 DEAD +	1.500				-1.543	1.500	1
	1029:1 DEAD +	1.500				-1.543	1.500	1
	1030:1 DEAD +	1.500				-1.411	1.500	1
	1031:1 DEAD +	1.500				-1.411	1.500	1
	1032:1 DEAD +	1.500				-2.205	1.500	1
	1033:1 DEAD +	1.500				-2.205	1.500	1
	1034:1 DEAD +	1.500				-2.205	1.500	1
	1035:1 DEAD +	1.500				-2.205	1.500	1
	1036:1 DEAD +	1.500				-1.543	1.500	1
	1037:1 DEAD +	1.500				-1.543	1.500	1
	1038:0.6 DEAC	1.500				-1.058	1.500	1
	1039:0.6 DEAC	1.500				-1.058	1.500	1
	1040:0.6 DEAC	1.500				-0.529	1.500	1
139	1:DEAD	1.000	11.013	1.000	3	-327.069	1.000	1
	2:LIVE	1.000	20.217	1.000	3	-512.867	1.000	1
	3:SNOW	1.000	76.361	1.000	3	-1.65E+3	1.000	1
	4:WIND+	1.000	61.635	1.000	3	-1.35E+3	1.000	1
	5:WIND-	1.000	954.936	1.000	1	-52.494	1.000	3
	1003:1.4 DEAC	1.000	15.418	1.000	3	-457.897	1.000	1
	1004:1.2 DEAC	1.000	23.324	1.000	3	-648.917	1.000	1

CONNECTED User: Brett Eisenhauer

Job Title Learning Experience Sloping Awning

Part

Ref

By Date 03-Mar-23 Chd

Client Capitol Awning

File Sloped Awning 6ft Analys Date/Time 10-May-2023 14:41

Beam Combined Axial and Bending Stresses Summary Cont...

Beam	L/C	Length (in)	Max Comp			Max Tens		
			Stress (psi)	d (in)	Corner	Stress (psi)	d (in)	Corner
	1005:1.2 DEAC	1.000	51.396	1.000	3	-1.22E+3	1.000	1
	1006:1.2 DEAC	1.000	13.216	1.000	3	-392.483	1.000	1
	1007:1.2 DEAC	1.000	45.563	1.000	3	-1.21E+3	1.000	1
	1008:1.2 DEAC	1.000	76.381	1.000	3	-1.89E+3	1.000	1
	1009:1.2 DEAC	1.000	19.316	1.000	3	-735.602	1.000	1
	1010:1.2 DEAC	1.000	135.394	1.000	3	-3.03E+3	1.000	1
	1011:1.2 DEAC	1.000	166.211	1.000	3	-3.7E+3	1.000	1
	1012:1.2 DEAC	1.000	109.147	1.000	3	-2.55E+3	1.000	1
	1013:1.2 DEAC	1.000	44.033	1.000	3	-1.07E+3	1.000	1
	1014:1.2 DEAC	1.000	84.985	1.000	1	-13.031	1.000	3
	1015:1.2 DEAC	1.000	84.959	1.000	3	-2E+3	1.000	1
	1016:1.2 DEAC	1.000	306.019	1.000	1	-29.170	1.000	3
	1017:1.2 DEAC	1.000	113.031	1.000	3	-2.56E+3	1.000	1
	1018:1.2 DEAC	1.000				-260.664	1.000	1
	1019:1.2 DEAC	1.000	74.851	1.000	3	-1.74E+3	1.000	1
	1020:1.2 DEAC	1.000	562.452	1.000	1	-39.278	1.000	3
	1021:0.9 DEAC	1.000	71.547	1.000	3	-1.64E+3	1.000	1
	1022:0.9 DEAC	1.000	660.573	1.000	1	-42.582	1.000	3
	1023:1.2 DEAC	1.000	28.488	1.000	3	-721.730	1.000	1
	1024:0.9 DEAC	1.000	9.912	1.000	3	-294.362	1.000	1
	1025:1 DEAD	1.000	11.013	1.000	3	-327.069	1.000	1
	1026:1 DEAD +	1.000	87.374	1.000	3	-1.97E+3	1.000	1
	1027:1 DEAD +	1.000	31.230	1.000	3	-839.936	1.000	1
	1028:1 DEAD +	1.000	26.176	1.000	3	-711.720	1.000	1
	1029:1 DEAD +	1.000	68.284	1.000	3	-1.56E+3	1.000	1
	1030:1 DEAD +	1.000	47.994	1.000	3	-1.14E+3	1.000	1
	1031:1 DEAD +	1.000	245.892	1.000	1	-20.483	1.000	3
	1032:1 DEAD +	1.000	72.402	1.000	3	-1.72E+3	1.000	1
	1033:1 DEAD +	1.000	4.772	0.167	1	-13.319	0.417	3
	1034:1 DEAD +	1.000	114.510	1.000	3	-2.57E+3	1.000	1
	1035:1 DEAD +	1.000	28.914	1.000	3	-845.543	1.000	1
	1036:1 DEAD +	1.000	57.239	1.000	3	-1.34E+3	1.000	1
	1037:1 DEAD +	1.000	389.132	1.000	1	-28.357	1.000	3
	1038:0.6 DEAC	1.000	43.589	1.000	3	-1.01E+3	1.000	1
	1039:0.6 DEAC	1.000	376.720	1.000	1	-24.889	1.000	3
	1040:0.6 DEAC	1.000	6.608	1.000	3	-196.242	1.000	1
140	1:DEAD	37.500	160.596	0	2	-164.320	0	1
	2:LIVE	37.500	254.518	0	2	-258.242	0	1
	3:SNOW	37.500	827.440	0	2	-831.164	0	1
	4:WIND+	37.500	677.165	0	2	-680.889	0	1
	5:WIND-	37.500	483.739	0	1	-487.463	0	2
	1003:1.4 DEAC	37.500	224.835	0	2	-230.048	0	1
	1004:1.2 DEAC	37.500	319.974	0	2	-326.305	0	1
	1005:1.2 DEAC	37.500	606.436	0	2	-612.766	0	1

CONNECTED User: Brett Eisenhauer

Job Title Learning Experience Sloping Awning

Part

Ref

By Date 03-Mar-23 Chd

Client Capitol Awning

File Sloped Awning 6ft Analys Date/Time 10-May-2023 14:41

Beam Combined Axial and Bending Stresses Summary Cont...

Beam	L/C	Length (in)	Max Comp			Max Tens		
			Stress (psi)	d (in)	Corner	Stress (psi)	d (in)	Corner
	1006:1.2 DEAC	37.500	192.715	0	2	-197.184	0	1
	1007:1.2 DEAC	37.500	599.944	0	2	-610.371	0	1
	1008:1.2 DEAC	37.500	938.527	0	2	-950.816	0	1
	1009:1.2 DEAC	37.500	356.212	0	2	-368.502	0	1
	1010:1.2 DEAC	37.500	1.52E+3	0	2	-1.53E+3	0	1
	1011:1.2 DEAC	37.500	1.86E+3	0	2	-1.87E+3	0	1
	1012:1.2 DEAC	37.500	1.27E+3	0	2	-1.29E+3	0	1
	1013:1.2 DEAC	37.500	531.298	0	2	-537.629	0	1
	1014:1.2 DEAC	37.500	44.685	0	1	-51.016	0	2
	1015:1.2 DEAC	37.500	997.140	0	2	-1.01E+3	0	1
	1016:1.2 DEAC	37.500	157.434	0	1	-167.489	0	2
	1017:1.2 DEAC	37.500	1.28E+3	0	2	-1.29E+3	0	1
	1018:1.2 DEAC	37.500	118.972	0	2	-129.027	0	1
	1019:1.2 DEAC	37.500	869.881	0	2	-878.074	0	1
	1020:1.2 DEAC	37.500	286.555	0	1	-294.748	0	2
	1021:0.9 DEAC	37.500	821.702	0	2	-828.778	0	1
	1022:0.9 DEAC	37.500	335.851	0	1	-342.927	0	2
	1023:1.2 DEAC	37.500	358.204	0	2	-363.417	0	1
	1024:0.9 DEAC	37.500	144.537	0	2	-147.888	0	1
	1025:1 DEAD	37.500	160.596	0	2	-164.320	0	1
	1026:1 DEAD +	37.500	988.036	0	2	-995.484	0	1
	1027:1 DEAD +	37.500	415.114	0	2	-422.562	0	1
	1028:1 DEAD +	37.500	351.485	0	2	-358.002	0	1
	1029:1 DEAD +	37.500	781.176	0	2	-787.693	0	1
	1030:1 DEAD +	37.500	566.895	0	2	-572.854	0	1
	1031:1 DEAD +	37.500	125.923	0	1	-131.882	0	2
	1032:1 DEAD +	37.500	859.359	0	2	-868.669	0	1
	1033:1 DEAD +	37.500	37.219	37.500	1	-28.154	37.500	2
	1034:1 DEAD +	37.500	1.29E+3	0	2	-1.3E+3	0	1
	1035:1 DEAD +	37.500	415.579	0	2	-424.889	0	1
	1036:1 DEAD +	37.500	668.470	0	2	-674.987	0	1
	1037:1 DEAD +	37.500	198.484	0	1	-205.001	0	2
	1038:0.6 DEAC	37.500	502.657	0	2	-507.126	0	1
	1039:0.6 DEAC	37.500	191.651	0	1	-196.120	0	2
	1040:0.6 DEAC	37.500	96.358	0	2	-98.592	0	1
141	1:DEAD	1.000	163.123	1.000	1	-63.857	1.000	3
	2:LIVE	1.000	267.007	1.000	1	-108.305	1.000	3
	3:SNOW	1.000	900.699	1.000	1	-379.440	1.000	3
	4:WIND+	1.000	734.485	1.000	1	-308.322	1.000	3
	5:WIND-	1.000	242.836	1.000	3	-553.677	1.000	1
	1003:1.4 DEAC	1.000	228.372	1.000	1	-89.400	1.000	3
	1004:1.2 DEAC	1.000	329.251	1.000	1	-130.781	1.000	3
	1005:1.2 DEAC	1.000	646.097	1.000	1	-266.348	1.000	3
	1006:1.2 DEAC	1.000	195.747	1.000	1	-76.629	1.000	3

CONNECTED User: Brett Eisenhauer

Job Title Learning Experience Sloping Awning

Part

Ref

By Date 03-Mar-23 Chd

Client Capitol Awning

File Sloped Awning 6ft Analys Date/Time 10-May-2023 14:41

Beam Combined Axial and Bending Stresses Summary Cont...

Beam	L/C	Length (in)	Max Comp			Max Tens		
			Stress (psi)	d (in)	Corner	Stress (psi)	d (in)	Corner
	1007:1.2 DEAC	1.000	622.958	1.000	1	-249.917	1.000	3
	1008:1.2 DEAC	1.000	990.200	1.000	1	-404.078	1.000	3
	1009:1.2 DEAC	1.000	346.119	1.000	1	-128.499	1.000	3
	1010:1.2 DEAC	1.000	1.64E+3	1.000	1	-683.732	1.000	3
	1011:1.2 DEAC	1.000	2E+3	1.000	1	-837.893	1.000	3
	1012:1.2 DEAC	1.000	1.36E+3	1.000	1	-562.314	1.000	3
	1013:1.2 DEAC	1.000	562.990	1.000	1	-230.790	1.000	3
	1014:1.2 DEAC	1.000	44.789	1.000	3	-81.091	1.000	1
	1015:1.2 DEAC	1.000	1.06E+3	1.000	1	-439.104	1.000	3
	1016:1.2 DEAC	1.000	112.054	1.000	3	-224.426	1.000	1
	1017:1.2 DEAC	1.000	1.38E+3	1.000	1	-574.671	1.000	3
	1018:1.2 DEAC	1.000	97.460	0	1	-28.553	0	3
	1019:1.2 DEAC	1.000	930.232	1.000	1	-384.951	1.000	3
	1020:1.2 DEAC	1.000	166.207	1.000	3	-357.930	1.000	1
	1021:0.9 DEAC	1.000	881.295	1.000	1	-365.794	1.000	3
	1022:0.9 DEAC	1.000	185.364	1.000	3	-406.867	1.000	1
	1023:1.2 DEAC	1.000	375.887	1.000	1	-152.516	1.000	3
	1024:0.9 DEAC	1.000	146.810	1.000	1	-57.471	1.000	3
	1025:1 DEAD	1.000	163.123	1.000	1	-63.857	1.000	3
	1026:1 DEAD +	1.000	1.06E+3	1.000	1	-443.297	1.000	3
	1027:1 DEAD +	1.000	430.129	1.000	1	-172.162	1.000	3
	1028:1 DEAD +	1.000	363.378	1.000	1	-145.086	1.000	3
	1029:1 DEAD +	1.000	838.647	1.000	1	-348.437	1.000	3
	1030:1 DEAD +	1.000	603.814	1.000	1	-248.851	1.000	3
	1031:1 DEAD +	1.000	81.844	1.000	3	-169.084	1.000	1
	1032:1 DEAD +	1.000	914.241	1.000	1	-376.328	1.000	3
	1033:1 DEAD +	1.000	37.041	1.000	3	-51.880	1.000	1
	1034:1 DEAD +	1.000	1.39E+3	1.000	1	-579.678	1.000	3
	1035:1 DEAD +	1.000	423.389	1.000	1	-166.310	1.000	3
	1036:1 DEAD +	1.000	713.986	1.000	1	-295.099	1.000	3
	1037:1 DEAD +	1.000	118.270	1.000	3	-252.135	1.000	1
	1038:0.6 DEAC	1.000	538.564	1.000	1	-223.308	1.000	3
	1039:0.6 DEAC	1.000	107.387	1.000	3	-234.333	1.000	1
	1040:0.6 DEAC	1.000	97.874	1.000	1	-38.314	1.000	3
142	1:DEAD	15.073	179.672	15.073	1	-287.745	15.073	3
	2:LIVE	15.073	295.329	15.073	1	-467.403	15.073	3
	3:SNOW	15.073	1E+3	15.073	1	-1.56E+3	15.073	3
	4:WIND+	15.073	815.785	15.073	1	-1.28E+3	15.073	3
	5:WIND-	15.073	951.894	15.073	3	-618.361	15.073	1
	1003:1.4 DEAC	15.073	251.540	15.073	1	-402.844	15.073	3
	1004:1.2 DEAC	15.073	363.270	15.073	1	-578.996	15.073	3
	1005:1.2 DEAC	15.073	716.024	15.073	1	-1.13E+3	15.073	3
	1006:1.2 DEAC	15.073	215.606	15.073	1	-345.295	15.073	3
	1007:1.2 DEAC	15.073	688.132	15.073	1	-1.09E+3	15.073	3

CONNECTED User: Brett Eisenhauer

Part

Job Title Learning Experience Sloping Awning

Ref

By Date 03-Mar-23 Chd

Client Capitol Awning

File Sloped Awning 6ft Analys Date/Time 10-May-2023 14:41

Beam Combined Axial and Bending Stresses Summary Cont...

Beam	L/C	Length (in)	Max Comp			Max Tens		
			Stress (psi)	d (in)	Corner	Stress (psi)	d (in)	Corner
	1008:1.2 DEAC	15.073	1.1E+3	15.073	1	-1.73E+3	15.073	3
	1009:1.2 DEAC	15.073	378.951	15.073	1	-617.193	15.073	3
	1010:1.2 DEAC	15.073	1.82E+3	15.073	1	-2.85E+3	15.073	3
	1011:1.2 DEAC	15.073	2.22E+3	15.073	1	-3.48E+3	15.073	3
	1012:1.2 DEAC	15.073	1.51E+3	15.073	1	-2.37E+3	15.073	3
	1013:1.2 DEAC	15.073	623.499	15.073	1	-983.227	15.073	3
	1014:1.2 DEAC	15.073	130.653	15.073	3	-93.575	15.073	1
	1015:1.2 DEAC	15.073	1.18E+3	15.073	1	-1.85E+3	15.073	3
	1016:1.2 DEAC	15.073	372.898	15.073	3	-255.091	15.073	1
	1017:1.2 DEAC	15.073	1.53E+3	15.073	1	-2.4E+3	15.073	3
	1018:1.2 DEAC	15.073	97.663	15.073	1	-175.059	15.073	3
	1019:1.2 DEAC	15.073	1.03E+3	15.073	1	-1.62E+3	15.073	3
	1020:1.2 DEAC	15.073	606.600	15.073	3	-402.755	15.073	1
	1021:0.9 DEAC	15.073	977.490	15.073	1	-1.53E+3	15.073	3
	1022:0.9 DEAC	15.073	692.923	15.073	3	-456.657	15.073	1
	1023:1.2 DEAC	15.073	415.773	15.073	1	-657.958	15.073	3
	1024:0.9 DEAC	15.073	161.705	15.073	1	-258.971	15.073	3
	1025:1 DEAD	15.073	179.672	15.073	1	-287.745	15.073	3
	1026:1 DEAD +	15.073	1.18E+3	15.073	1	-1.85E+3	15.073	3
	1027:1 DEAD +	15.073	475.000	15.073	1	-755.149	15.073	3
	1028:1 DEAD +	15.073	401.168	15.073	1	-638.298	15.073	3
	1029:1 DEAD +	15.073	930.299	15.073	1	-1.46E+3	15.073	3
	1030:1 DEAD +	15.073	669.143	15.073	1	-1.05E+3	15.073	3
	1031:1 DEAD +	15.073	283.391	15.073	3	-191.345	15.073	1
	1032:1 DEAD +	15.073	1.01E+3	15.073	1	-1.6E+3	15.073	3
	1033:1 DEAD +	15.073	75.623	15.073	3	-62.603	15.073	1
	1034:1 DEAD +	15.073	1.54E+3	15.073	1	-2.42E+3	15.073	3
	1035:1 DEAD +	15.073	466.528	15.073	1	-746.312	15.073	3
	1036:1 DEAD +	15.073	791.511	15.073	1	-1.24E+3	15.073	3
	1037:1 DEAD +	15.073	426.175	15.073	3	-284.099	15.073	1
	1038:0.6 DEAC	15.073	597.274	15.073	1	-938.166	15.073	3
	1039:0.6 DEAC	15.073	398.489	15.073	3	-263.214	15.073	1
	1040:0.6 DEAC	15.073	107.803	15.073	1	-172.647	15.073	3
143	1:DEAD	1.000	188.435	0	1	-316.561	0	3
	2:LIVE	1.000	311.239	0	1	-516.671	0	3
	3:SNOW	1.000	1.06E+3	0	1	-1.74E+3	0	3
	4:WIND+	1.000	863.859	0	1	-1.42E+3	0	3
	5:WIND-	1.000	1.06E+3	0	3	-658.915	0	1
	1003:1.4 DEAC	1.000	263.809	0	1	-443.186	0	3
	1004:1.2 DEAC	1.000	381.741	0	1	-638.209	0	3
	1005:1.2 DEAC	1.000	756.295	0	1	-1.25E+3	0	3
	1006:1.2 DEAC	1.000	226.122	0	1	-379.873	0	3
	1007:1.2 DEAC	1.000	724.105	0	1	-1.21E+3	0	3
	1008:1.2 DEAC	1.000	1.16E+3	0	1	-1.92E+3	0	3

CONNECTED User: Brett Eisenhauer

Job Title Learning Experience Sloping Awning

Part

Ref

By Date 03-Mar-23 Chd

Client Capitol Awning

File Sloped Awning 6ft Analys Date/Time 10-May-2023 14:41

Beam Combined Axial and Bending Stresses Summary Cont...

Beam	L/C	Length (in)	Max Comp			Max Tens		
			Stress (psi)	d (in)	Corner	Stress (psi)	d (in)	Corner
	1009:1.2 DEAC	1.000	394.647	0	1	-674.448	0	3
	1010:1.2 DEAC	1.000	1.92E+3	0	1	-3.16E+3	0	3
	1011:1.2 DEAC	1.000	2.35E+3	0	1	-3.87E+3	0	3
	1012:1.2 DEAC	1.000	1.59E+3	0	1	-2.63E+3	0	3
	1013:1.2 DEAC	1.000	658.051	0	1	-1.09E+3	0	3
	1014:1.2 DEAC	1.000	152.226	0	3	-103.336	0	1
	1015:1.2 DEAC	1.000	1.25E+3	0	1	-2.06E+3	0	3
	1016:1.2 DEAC	1.000	425.990	0	3	-277.174	0	1
	1017:1.2 DEAC	1.000	1.62E+3	0	1	-2.67E+3	0	3
	1018:1.2 DEAC	1.000	97.380	0	1	-184.346	0	3
	1019:1.2 DEAC	1.000	1.09E+3	0	1	-1.8E+3	0	3
	1020:1.2 DEAC	1.000	684.326	0	3	-432.793	0	1
	1021:0.9 DEAC	1.000	1.03E+3	0	1	-1.7E+3	0	3
	1022:0.9 DEAC	1.000	779.294	0	3	-489.324	0	1
	1023:1.2 DEAC	1.000	438.191	0	1	-727.342	0	3
	1024:0.9 DEAC	1.000	169.591	0	1	-284.905	0	3
	1025:1 DEAD	1.000	188.435	0	1	-316.561	0	3
	1026:1 DEAD +	1.000	1.25E+3	0	1	-2.05E+3	0	3
	1027:1 DEAD +	1.000	499.674	0	1	-833.232	0	3
	1028:1 DEAD +	1.000	421.864	0	1	-704.065	0	3
	1029:1 DEAD +	1.000	983.694	0	1	-1.62E+3	0	3
	1030:1 DEAD +	1.000	706.750	0	1	-1.17E+3	0	3
	1031:1 DEAD +	1.000	321.958	0	3	-206.914	0	1
	1032:1 DEAD +	1.000	1.07E+3	0	1	-1.77E+3	0	3
	1033:1 DEAD +	1.000	94.085	0	3	-72.322	0	1
	1034:1 DEAD +	1.000	1.63E+3	0	1	-2.68E+3	0	3
	1035:1 DEAD +	1.000	489.508	0	1	-821.419	0	3
	1036:1 DEAD +	1.000	836.329	0	1	-1.38E+3	0	3
	1037:1 DEAD +	1.000	481.588	0	3	-305.751	0	1
	1038:0.6 DEAC	1.000	631.376	0	1	-1.04E+3	0	3
	1039:0.6 DEAC	1.000	448.583	0	3	-282.288	0	1
	1040:0.6 DEAC	1.000	113.061	0	1	-189.937	0	3
144	1:DEAD	1.144				-130.278	1.144	1
	2:LIVE	1.144				-207.770	1.144	1
	3:SNOW	1.144				-680.469	1.144	1
	4:WIND+	1.144				-556.482	1.144	1
	5:WIND-	1.144	404.415	1.144	1			
	1003:1.4 DEAC	1.144				-182.389	1.144	1
	1004:1.2 DEAC	1.144				-260.218	1.144	1
	1005:1.2 DEAC	1.144				-496.568	1.144	1
	1006:1.2 DEAC	1.144				-156.334	1.144	1
	1007:1.2 DEAC	1.144				-488.765	1.144	1
	1008:1.2 DEAC	1.144				-767.006	1.144	1
	1009:1.2 DEAC	1.144				-286.558	1.144	1

CONNECTED User: Brett Eisenhauer

Job Title Learning Experience Sloping Awning

Part

Ref

By Date 03-Mar-23 Chd

Client Capitol Awning

File Sloped Awning 6ft Analys Date/Time 10-May-2023 14:41

Beam Combined Axial and Bending Stresses Summary Cont...

Beam	L/C	Length (in)	Max Comp			Max Tens		
			Stress (psi)	d (in)	Corner	Stress (psi)	d (in)	Corner
	1010:1.2 DEAC	1.144				-1.25E+3	1.144	1
	1011:1.2 DEAC	1.144				-1.52E+3	1.144	1
	1012:1.2 DEAC	1.144				-1.04E+3	1.144	1
	1013:1.2 DEAC	1.144				-434.575	1.144	1
	1014:1.2 DEAC	1.144	45.874	1.144	1			
	1015:1.2 DEAC	1.144				-816.700	1.144	1
	1016:1.2 DEAC	1.144	144.196	1.144	1			
	1017:1.2 DEAC	1.144				-1.05E+3	1.144	1
	1018:1.2 DEAC	1.144				-96.209	0	1
	1019:1.2 DEAC	1.144				-712.816	1.144	1
	1020:1.2 DEAC	1.144	248.081	1.144	1			
	1021:0.9 DEAC	1.144				-673.732	1.144	1
	1022:0.9 DEAC	1.144	287.164	1.144	1			
	1023:1.2 DEAC	1.144				-292.427	1.144	1
	1024:0.9 DEAC	1.144				-117.250	1.144	1
	1025:1 DEAD	1.144				-130.278	1.144	1
	1026:1 DEAD +	1.144				-810.747	1.144	1
	1027:1 DEAD +	1.144				-338.048	1.144	1
	1028:1 DEAD +	1.144				-286.105	1.144	1
	1029:1 DEAD +	1.144				-640.629	1.144	1
	1030:1 DEAD +	1.144				-464.167	1.144	1
	1031:1 DEAD +	1.144	112.371	1.144	1			
	1032:1 DEAD +	1.144				-703.467	1.144	1
	1033:1 DEAD +	1.144	17.206	1.144	1			
	1034:1 DEAD +	1.144				-1.06E+3	1.144	1
	1035:1 DEAD +	1.144				-337.319	1.144	1
	1036:1 DEAD +	1.144				-547.639	1.144	1
	1037:1 DEAD +	1.144	173.033	1.144	1			
	1038:0.6 DEAC	1.144				-412.056	1.144	1
	1039:0.6 DEAC	1.144	164.482	1.144	1			
	1040:0.6 DEAC	1.144				-78.167	1.144	1
145	1:DEAD	1.000	172.126	0	3	-465.070	0	1
	2:LIVE	1.000	287.407	0	3	-743.640	0	1
	3:SNOW	1.000	990.621	0	3	-2.44E+3	0	1
	4:WIND+	1.000	806.171	0	3	-2E+3	0	1
	5:WIND-	1.000	1.46E+3	0	1	-623.313	0	3
	1003:1.4 DEAC	1.000	240.976	0	3	-651.097	0	1
	1004:1.2 DEAC	1.000	350.254	0	3	-929.903	0	1
	1005:1.2 DEAC	1.000	701.861	0	3	-1.78E+3	0	1
	1006:1.2 DEAC	1.000	206.551	0	3	-558.084	0	1
	1007:1.2 DEAC	1.000	666.401	0	3	-1.75E+3	0	1
	1008:1.2 DEAC	1.000	1.07E+3	0	3	-2.75E+3	0	1
	1009:1.2 DEAC	1.000	354.745	0	3	-1.02E+3	0	1
	1010:1.2 DEAC	1.000	1.79E+3	0	3	-4.47E+3	0	1

CONNECTED User: Brett Eisenhauer

Job Title Learning Experience Sloping Awning

Part

Ref

By Date 03-Mar-23 Chd

Client Capitol Awning

File Sloped Awning 6ft Analys Date/Time 10-May-2023 14:41

Beam Combined Axial and Bending Stresses Summary Cont...

Beam	L/C	Length (in)	Max Comp			Max Tens		
			Stress (psi)	d (in)	Corner	Stress (psi)	d (in)	Corner
	1011:1.2 DEAC	1.000	2.19E+3	0	3	-5.47E+3	0	1
	1012:1.2 DEAC	1.000	1.48E+3	0	3	-3.74E+3	0	1
	1013:1.2 DEAC	1.000	609.636	0	3	-1.56E+3	0	1
	1014:1.2 DEAC	1.000	170.448	0	1	-105.106	0	3
	1015:1.2 DEAC	1.000	1.16E+3	0	3	-2.93E+3	0	1
	1016:1.2 DEAC	1.000	527.161	0	1	-273.059	0	3
	1017:1.2 DEAC	1.000	1.51E+3	0	3	-3.78E+3	0	1
	1018:1.2 DEAC	1.000	78.548	0	3	-322.478	0	1
	1019:1.2 DEAC	1.000	1.01E+3	0	3	-2.56E+3	0	1
	1020:1.2 DEAC	1.000	898.980	0	1	-416.763	0	3
	1021:0.9 DEAC	1.000	961.084	0	3	-2.42E+3	0	1
	1022:0.9 DEAC	1.000	1.04E+3	0	1	-468.400	0	3
	1023:1.2 DEAC	1.000	404.675	0	3	-1.05E+3	0	1
	1024:0.9 DEAC	1.000	154.913	0	3	-418.563	0	1
	1025:1 DEAD	1.000	172.126	0	3	-465.070	0	1
	1026:1 DEAD +	1.000	1.16E+3	0	3	-2.91E+3	0	1
	1027:1 DEAD +	1.000	459.532	0	3	-1.21E+3	0	1
	1028:1 DEAD +	1.000	387.681	0	3	-1.02E+3	0	1
	1029:1 DEAD +	1.000	915.091	0	3	-2.3E+3	0	1
	1030:1 DEAD +	1.000	655.828	0	3	-1.66E+3	0	1
	1031:1 DEAD +	1.000	409.169	0	1	-201.862	0	3
	1032:1 DEAD +	1.000	992.309	0	3	-2.52E+3	0	1
	1033:1 DEAD +	1.000	69.999	0	1	-79.804	0	3
	1034:1 DEAD +	1.000	1.52E+3	0	3	-3.8E+3	0	1
	1035:1 DEAD +	1.000	447.606	0	3	-1.2E+3	0	1
	1036:1 DEAD +	1.000	776.754	0	3	-1.96E+3	0	1
	1037:1 DEAD +	1.000	627.728	0	1	-295.359	0	3
	1038:0.6 DEAC	1.000	586.978	0	3	-1.48E+3	0	1
	1039:0.6 DEAC	1.000	595.197	0	1	-270.713	0	3
	1040:0.6 DEAC	1.000	103.275	0	3	-279.042	0	1
146	1:DEAD	1.000	213.210	0	1	-527.643	0	3
	2:LIVE	1.000	357.095	0	1	-848.122	0	3
	3:SNOW	1.000	1.23E+3	0	1	-2.8E+3	0	3
	4:WIND+	1.000	1E+3	0	1	-2.29E+3	0	3
	5:WIND-	1.000	1.68E+3	0	3	-779.595	0	1
	1003:1.4 DEAC	1.000	298.495	0	1	-738.700	0	3
	1004:1.2 DEAC	1.000	434.400	0	1	-1.06E+3	0	3
	1005:1.2 DEAC	1.000	873.249	0	1	-2.03E+3	0	3
	1006:1.2 DEAC	1.000	255.853	0	1	-633.171	0	3
	1007:1.2 DEAC	1.000	827.205	0	1	-1.99E+3	0	3
	1008:1.2 DEAC	1.000	1.33E+3	0	1	-3.14E+3	0	3
	1009:1.2 DEAC	1.000	437.408	0	1	-1.15E+3	0	3
	1010:1.2 DEAC	1.000	2.23E+3	0	1	-5.12E+3	0	3
	1011:1.2 DEAC	1.000	2.73E+3	0	1	-6.26E+3	0	3

CONNECTED User: Brett Eisenhauer

Job Title Learning Experience Sloping Awning

Part

Ref

By Date 03-Mar-23 Chd

Client Capitol Awning

File Sloped Awning 6ft Analys Date/Time 10-May-2023 14:41

Beam Combined Axial and Bending Stresses Summary Cont...

Beam	L/C	Length (in)	Max Comp			Max Tens		
			Stress (psi)	d (in)	Corner	Stress (psi)	d (in)	Corner
	1012:1.2 DEAC	1.000	1.84E+3	0	1	-4.28E+3	0	3
	1013:1.2 DEAC	1.000	758.141	0	1	-1.78E+3	0	3
	1014:1.2 DEAC	1.000	208.662	0	3	-133.945	0	1
	1015:1.2 DEAC	1.000	1.44E+3	0	1	-3.35E+3	0	3
	1016:1.2 DEAC	1.000	626.433	0	3	-345.195	0	1
	1017:1.2 DEAC	1.000	1.88E+3	0	1	-4.32E+3	0	3
	1018:1.2 DEAC	1.000	93.654	0	1	-351.029	0	3
	1019:1.2 DEAC	1.000	1.26E+3	0	1	-2.92E+3	0	3
	1020:1.2 DEAC	1.000	1.05E+3	0	3	-523.742	0	1
	1021:0.9 DEAC	1.000	1.2E+3	0	1	-2.77E+3	0	3
	1022:0.9 DEAC	1.000	1.21E+3	0	3	-587.706	0	1
	1023:1.2 DEAC	1.000	502.811	0	1	-1.19E+3	0	3
	1024:0.9 DEAC	1.000	191.889	0	1	-474.878	0	3
	1025:1 DEAD	1.000	213.210	0	1	-527.643	0	3
	1026:1 DEAD +	1.000	1.45E+3	0	1	-3.33E+3	0	3
	1027:1 DEAD +	1.000	570.306	0	1	-1.38E+3	0	3
	1028:1 DEAD +	1.000	481.032	0	1	-1.16E+3	0	3
	1029:1 DEAD +	1.000	1.14E+3	0	1	-2.63E+3	0	3
	1030:1 DEAD +	1.000	815.957	0	1	-1.9E+3	0	3
	1031:1 DEAD +	1.000	482.557	0	3	-254.547	0	1
	1032:1 DEAD +	1.000	1.23E+3	0	1	-2.88E+3	0	3
	1033:1 DEAD +	1.000	99.015	0	3	-103.664	0	1
	1034:1 DEAD +	1.000	1.89E+3	0	1	-4.35E+3	0	3
	1035:1 DEAD +	1.000	554.609	0	1	-1.37E+3	0	3
	1036:1 DEAD +	1.000	966.643	0	1	-2.25E+3	0	3
	1037:1 DEAD +	1.000	735.106	0	3	-371.486	0	1
	1038:0.6 DEAC	1.000	730.673	0	1	-1.69E+3	0	3
	1039:0.6 DEAC	1.000	693.614	0	3	-339.831	0	1
	1040:0.6 DEAC	1.000	127.926	0	1	-316.586	0	3
147	1:DEAD	15.073	184.227	0	1	-498.754	0	3
	2:LIVE	15.073	308.811	0	1	-799.932	0	3
	3:SNOW	15.073	1.07E+3	0	1	-2.64E+3	0	3
	4:WIND+	15.073	869.438	0	1	-2.16E+3	0	3
	5:WIND-	15.073	1.58E+3	0	3	-675.401	0	1
	1003:1.4 DEAC	15.073	257.918	0	1	-698.255	0	3
	1004:1.2 DEAC	15.073	375.478	0	1	-998.471	0	3
	1005:1.2 DEAC	15.073	755.459	0	1	-1.92E+3	0	3
	1006:1.2 DEAC	15.073	221.072	0	1	-598.505	0	3
	1007:1.2 DEAC	15.073	715.170	0	1	-1.88E+3	0	3
	1008:1.2 DEAC	15.073	1.15E+3	0	1	-2.96E+3	0	3
	1009:1.2 DEAC	15.073	377.469	0	1	-1.09E+3	0	3
	1010:1.2 DEAC	15.073	1.93E+3	0	1	-4.82E+3	0	3
	1011:1.2 DEAC	15.073	2.37E+3	0	1	-5.9E+3	0	3
	1012:1.2 DEAC	15.073	1.59E+3	0	1	-4.03E+3	0	3

CONNECTED User: Brett Eisenhauer

Job Title Learning Experience Sloping Awning

Part

Ref

By Date 03-Mar-23 Chd

Client Capitol Awning

File Sloped Awning 6ft Analys Date/Time 10-May-2023 14:41

Beam Combined Axial and Bending Stresses Summary Cont...

Beam	L/C	Length (in)	Max Comp			Max Tens		
			Stress (psi)	d (in)	Corner	Stress (psi)	d (in)	Corner
	1013:1.2 DEAC	15.073	655.791	0	1	-1.68E+3	0	3
	1014:1.2 DEAC	15.073	191.183	0	3	-116.628	0	1
	1015:1.2 DEAC	15.073	1.24E+3	0	1	-3.15E+3	0	3
	1016:1.2 DEAC	15.073	580.904	0	3	-299.924	0	1
	1017:1.2 DEAC	15.073	1.62E+3	0	1	-4.07E+3	0	3
	1018:1.2 DEAC	15.073	80.057	0	1	-337.689	0	3
	1019:1.2 DEAC	15.073	1.09E+3	0	1	-2.75E+3	0	3
	1020:1.2 DEAC	15.073	980.870	0	3	-454.329	0	1
	1021:0.9 DEAC	15.073	1.04E+3	0	1	-2.6E+3	0	3
	1022:0.9 DEAC	15.073	1.13E+3	0	3	-509.597	0	1
	1023:1.2 DEAC	15.073	434.827	0	1	-1.13E+3	0	3
	1024:0.9 DEAC	15.073	165.804	0	1	-448.878	0	3
	1025:1 DEAD	15.073	184.227	0	1	-498.754	0	3
	1026:1 DEAD +	15.073	1.25E+3	0	1	-3.14E+3	0	3
	1027:1 DEAD +	15.073	493.038	0	1	-1.3E+3	0	3
	1028:1 DEAD +	15.073	415.835	0	1	-1.1E+3	0	3
	1029:1 DEAD +	15.073	985.806	0	1	-2.48E+3	0	3
	1030:1 DEAD +	15.073	705.890	0	1	-1.79E+3	0	3
	1031:1 DEAD +	15.073	448.871	0	3	-221.014	0	1
	1032:1 DEAD +	15.073	1.07E+3	0	1	-2.72E+3	0	3
	1033:1 DEAD +	15.073	85.828	0	3	-90.716	0	1
	1034:1 DEAD +	15.073	1.64E+3	0	1	-4.09E+3	0	3
	1035:1 DEAD +	15.073	479.255	0	1	-1.29E+3	0	3
	1036:1 DEAD +	15.073	836.305	0	1	-2.12E+3	0	3
	1037:1 DEAD +	15.073	685.777	0	3	-322.324	0	1
	1038:0.6 DEAC	15.073	632.199	0	1	-1.59E+3	0	3
	1039:0.6 DEAC	15.073	648.373	0	3	-294.705	0	1
	1040:0.6 DEAC	15.073	110.536	0	1	-299.252	0	3
148	1:DEAD	1.000	223.189	1.000	1	-517.664	1.000	3
	2:LIVE	1.000	373.726	1.000	1	-831.491	1.000	3
	3:SNOW	1.000	1.29E+3	1.000	1	-2.75E+3	1.000	3
	4:WIND+	1.000	1.05E+3	1.000	1	-2.24E+3	1.000	3
	5:WIND-	1.000	1.65E+3	1.000	3	-815.518	1.000	1
	1003:1.4 DEAC	1.000	312.465	1.000	1	-724.730	1.000	3
	1004:1.2 DEAC	1.000	454.690	1.000	1	-1.04E+3	1.000	3
	1005:1.2 DEAC	1.000	913.829	1.000	1	-1.99E+3	1.000	3
	1006:1.2 DEAC	1.000	267.827	1.000	1	-621.197	1.000	3
	1007:1.2 DEAC	1.000	865.789	1.000	1	-1.95E+3	1.000	3
	1008:1.2 DEAC	1.000	1.39E+3	1.000	1	-3.07E+3	1.000	3
	1009:1.2 DEAC	1.000	458.030	1.000	1	-1.13E+3	1.000	3
	1010:1.2 DEAC	1.000	2.34E+3	1.000	1	-5.01E+3	1.000	3
	1011:1.2 DEAC	1.000	2.86E+3	1.000	1	-6.14E+3	1.000	3
	1012:1.2 DEAC	1.000	1.93E+3	1.000	1	-4.19E+3	1.000	3
	1013:1.2 DEAC	1.000	793.399	1.000	1	-1.74E+3	1.000	3

CONNECTED User: Brett Eisenhauer

Job Title Learning Experience Sloping Awning

Part

Ref

By Date 03-Mar-23 Chd

Client Capitol Awning

File Sloped Awning 6ft Analys Date/Time 10-May-2023 14:41

Beam Combined Axial and Bending Stresses Summary Cont...

Beam	L/C	Length (in)	Max Comp			Max Tens		
			Stress (psi)	d (in)	Corner	Stress (psi)	d (in)	Corner
	1014:1.2 DEAC	1.000	202.674	1.000	3	-139.932	1.000	1
	1015:1.2 DEAC	1.000	1.51E+3	1.000	1	-3.28E+3	1.000	3
	1016:1.2 DEAC	1.000	610.800	1.000	3	-360.828	1.000	1
	1017:1.2 DEAC	1.000	1.96E+3	1.000	1	-4.24E+3	1.000	3
	1018:1.2 DEAC	1.000	98.311	1.000	1	-346.372	1.000	3
	1019:1.2 DEAC	1.000	1.32E+3	1.000	1	-2.86E+3	1.000	3
	1020:1.2 DEAC	1.000	1.03E+3	1.000	3	-547.691	1.000	1
	1021:0.9 DEAC	1.000	1.25E+3	1.000	1	-2.71E+3	1.000	3
	1022:0.9 DEAC	1.000	1.18E+3	1.000	3	-614.648	1.000	1
	1023:1.2 DEAC	1.000	526.228	1.000	1	-1.17E+3	1.000	3
	1024:0.9 DEAC	1.000	200.870	1.000	1	-465.898	1.000	3
	1025:1 DEAD	1.000	223.189	1.000	1	-517.664	1.000	3
	1026:1 DEAD +	1.000	1.52E+3	1.000	1	-3.26E+3	1.000	3
	1027:1 DEAD +	1.000	596.915	1.000	1	-1.35E+3	1.000	3
	1028:1 DEAD +	1.000	503.484	1.000	1	-1.14E+3	1.000	3
	1029:1 DEAD +	1.000	1.19E+3	1.000	1	-2.58E+3	1.000	3
	1030:1 DEAD +	1.000	853.875	1.000	1	-1.86E+3	1.000	3
	1031:1 DEAD +	1.000	470.981	1.000	3	-266.122	1.000	1
	1032:1 DEAD +	1.000	1.29E+3	1.000	1	-2.82E+3	1.000	3
	1033:1 DEAD +	1.000	94.525	1.000	3	-108.155	1.000	1
	1034:1 DEAD +	1.000	1.98E+3	1.000	1	-4.26E+3	1.000	3
	1035:1 DEAD +	1.000	580.553	1.000	1	-1.34E+3	1.000	3
	1036:1 DEAD +	1.000	1.01E+3	1.000	1	-2.2E+3	1.000	3
	1037:1 DEAD +	1.000	718.143	1.000	3	-388.449	1.000	1
	1038:0.6 DEAC	1.000	764.600	1.000	1	-1.66E+3	1.000	3
	1039:0.6 DEAC	1.000	678.047	1.000	3	-355.397	1.000	1
	1040:0.6 DEAC	1.000	133.913	1.000	1	-310.598	1.000	3
149	1:DEAD	14.073	182.881	14.073	1	-477.260	14.073	3
	2:LIVE	14.073	306.739	14.073	1	-764.406	14.073	3
	3:SNOW	14.073	1.06E+3	14.073	1	-2.52E+3	14.073	3
	4:WIND+	14.073	864.099	14.073	1	-2.06E+3	14.073	3
	5:WIND-	14.073	1.5E+3	14.073	3	-671.737	14.073	1
	1003:1.4 DEAC	14.073	256.034	14.073	1	-668.163	14.073	3
	1004:1.2 DEAC	14.073	372.827	14.073	1	-954.915	14.073	3
	1005:1.2 DEAC	14.073	750.593	14.073	1	-1.83E+3	14.073	3
	1006:1.2 DEAC	14.073	219.457	14.073	1	-572.711	14.073	3
	1007:1.2 DEAC	14.073	710.240	14.073	1	-1.8E+3	14.073	3
	1008:1.2 DEAC	14.073	1.14E+3	14.073	1	-2.82E+3	14.073	3
	1009:1.2 DEAC	14.073	374.371	14.073	1	-1.04E+3	14.073	3
	1010:1.2 DEAC	14.073	1.92E+3	14.073	1	-4.6E+3	14.073	3
	1011:1.2 DEAC	14.073	2.35E+3	14.073	1	-5.63E+3	14.073	3
	1012:1.2 DEAC	14.073	1.58E+3	14.073	1	-3.85E+3	14.073	3
	1013:1.2 DEAC	14.073	651.507	14.073	1	-1.6E+3	14.073	3
	1014:1.2 DEAC	14.073	179.315	14.073	3	-116.411	14.073	1

CONNECTED User: Brett Eisenhauer

Part

Job Title Learning Experience Sloping Awning

Ref

By Date 03-Mar-23 Chd

Client Capitol Awning

File Sloped Awning 6ft Analys Date/Time 10-May-2023 14:41

Beam Combined Axial and Bending Stresses Summary Cont...

Beam	L/C	Length (in)	Max Comp			Max Tens		
			Stress (psi)	d (in)	Corner	Stress (psi)	d (in)	Corner
	1015:1.2 DEAC	14.073	1.24E+3	14.073	1	-3.01E+3	14.073	3
	1016:1.2 DEAC	14.073	549.138	14.073	3	-298.910	14.073	1
	1017:1.2 DEAC	14.073	1.61E+3	14.073	1	-3.89E+3	14.073	3
	1018:1.2 DEAC	14.073	78.856	14.073	1	-326.660	14.073	3
	1019:1.2 DEAC	14.073	1.08E+3	14.073	1	-2.63E+3	14.073	3
	1020:1.2 DEAC	14.073	931.341	14.073	3	-452.280	14.073	1
	1021:0.9 DEAC	14.073	1.03E+3	14.073	1	-2.49E+3	14.073	3
	1022:0.9 DEAC	14.073	1.07E+3	14.073	3	-507.144	14.073	1
	1023:1.2 DEAC	14.073	431.911	14.073	1	-1.08E+3	14.073	3
	1024:0.9 DEAC	14.073	164.593	14.073	1	-429.534	14.073	3
	1025:1 DEAD	14.073	182.881	14.073	1	-477.260	14.073	3
	1026:1 DEAD +	14.073	1.25E+3	14.073	1	-2.99E+3	14.073	3
	1027:1 DEAD +	14.073	489.620	14.073	1	-1.24E+3	14.073	3
	1028:1 DEAD +	14.073	412.935	14.073	1	-1.05E+3	14.073	3
	1029:1 DEAD +	14.073	979.584	14.073	1	-2.36E+3	14.073	3
	1030:1 DEAD +	14.073	701.340	14.073	1	-1.71E+3	14.073	3
	1031:1 DEAD +	14.073	425.172	14.073	3	-220.161	14.073	1
	1032:1 DEAD +	14.073	1.06E+3	14.073	1	-2.59E+3	14.073	3
	1033:1 DEAD +	14.073	77.475	14.073	3	-90.868	14.073	1
	1034:1 DEAD +	14.073	1.63E+3	14.073	1	-3.91E+3	14.073	3
	1035:1 DEAD +	14.073	475.781	14.073	1	-1.24E+3	14.073	3
	1036:1 DEAD +	14.073	830.955	14.073	1	-2.02E+3	14.073	3
	1037:1 DEAD +	14.073	650.780	14.073	3	-320.922	14.073	1
	1038:0.6 DEAC	14.073	628.188	14.073	1	-1.52E+3	14.073	3
	1039:0.6 DEAC	14.073	616.076	14.073	3	-293.314	14.073	1
	1040:0.6 DEAC	14.073	109.729	14.073	1	-286.356	14.073	3
150	1:DEAD	1.000	28.950	1.000	3	-232.703	1.000	1
	2:LIVE	1.000	33.961	1.000	3	-355.788	1.000	1
	3:SNOW	1.000	64.527	1.000	3	-1.11E+3	1.000	1
	4:WIND+	1.000	56.509	1.000	3	-909.675	1.000	1
	5:WIND-	1.000	616.589	1.000	1	-5.624	1.000	3
	1003:1.4 DEAC	1.000	40.531	1.000	3	-325.784	1.000	1
	1004:1.2 DEAC	1.000	51.721	1.000	3	-457.137	1.000	1
	1005:1.2 DEAC	1.000	67.004	1.000	3	-832.549	1.000	1
	1006:1.2 DEAC	1.000	34.741	1.000	3	-279.243	1.000	1
	1007:1.2 DEAC	1.000	89.078	1.000	3	-848.505	1.000	1
	1008:1.2 DEAC	1.000	117.333	1.000	3	-1.3E+3	1.000	1
	1009:1.2 DEAC	1.000	86.267	1.000	3	-540.210	1.000	1
	1010:1.2 DEAC	1.000	137.983	1.000	3	-2.05E+3	1.000	1
	1011:1.2 DEAC	1.000	166.238	1.000	3	-2.5E+3	1.000	1
	1012:1.2 DEAC	1.000	135.171	1.000	3	-1.74E+3	1.000	1
	1013:1.2 DEAC	1.000	62.995	1.000	3	-734.081	1.000	1
	1014:1.2 DEAC	1.000	35.361	0	1			
	1015:1.2 DEAC	1.000	108.231	1.000	3	-1.37E+3	1.000	1

CONNECTED User: Brett Eisenhauer

Job Title Learning Experience Sloping Awning

Part

Ref

By Date 03-Mar-23 Chd

Client Capitol Awning

File Sloped Awning 6ft Analys Date/Time 10-May-2023 14:41

Beam Combined Axial and Bending Stresses Summary Cont...

Beam	L/C	Length (in)	Max Comp			Max Tens		
			Stress (psi)	d (in)	Corner	Stress (psi)	d (in)	Corner
	1016:1.2 DEAC	1.000	167.444	0	1			
	1017:1.2 DEAC	1.000	123.513	1.000	3	-1.74E+3	1.000	1
	1018:1.2 DEAC	1.000	61.380	1.000	3	-215.960	1.000	1
	1019:1.2 DEAC	1.000	91.250	1.000	3	-1.19E+3	1.000	1
	1020:1.2 DEAC	1.000	340.145	0	1			
	1021:0.9 DEAC	1.000	82.565	1.000	3	-1.12E+3	1.000	1
	1022:0.9 DEAC	1.000	407.500	0	1			
	1023:1.2 DEAC	1.000	47.646	1.000	3	-500.566	1.000	1
	1024:0.9 DEAC	1.000	26.055	1.000	3	-209.432	1.000	1
	1025:1 DEAD	1.000	28.950	1.000	3	-232.703	1.000	1
	1026:1 DEAD +	1.000	93.477	1.000	3	-1.34E+3	1.000	1
	1027:1 DEAD +	1.000	62.912	1.000	3	-588.491	1.000	1
	1028:1 DEAD +	1.000	54.421	1.000	3	-499.544	1.000	1
	1029:1 DEAD +	1.000	77.345	1.000	3	-1.06E+3	1.000	1
	1030:1 DEAD +	1.000	62.856	1.000	3	-778.507	1.000	1
	1031:1 DEAD +	1.000	141.221	0	1			
	1032:1 DEAD +	1.000	96.803	1.000	3	-1.18E+3	1.000	1
	1033:1 DEAD +	1.000	50.204	1.000	3	-37.102	1.000	1
	1034:1 DEAD +	1.000	119.727	1.000	3	-1.74E+3	1.000	1
	1035:1 DEAD +	1.000	73.128	1.000	3	-600.219	1.000	1
	1036:1 DEAD +	1.000	71.332	1.000	3	-914.959	1.000	1
	1037:1 DEAD +	1.000	232.657	0	1			
	1038:0.6 DEAC	1.000	51.276	1.000	3	-685.426	1.000	1
	1039:0.6 DEAC	1.000	231.029	0	1			
	1040:0.6 DEAC	1.000	17.370	1.000	3	-139.622	1.000	1
151	1:DEAD	19.620	20.862	19.620	3	-224.519	19.620	1
	2:LIVE	19.620	23.669	19.620	3	-345.401	19.620	1
	3:SNOW	19.620	40.792	19.620	3	-1.08E+3	19.620	1
	4:WIND+	19.620	36.301	19.620	3	-889.371	19.620	1
	5:WIND-	19.620	609.567	19.620	1			
	1003:1.4 DEAC	19.620	29.207	19.620	3	-314.327	19.620	1
	1004:1.2 DEAC	19.620	36.869	19.620	3	-442.123	19.620	1
	1005:1.2 DEAC	19.620	45.431	19.620	3	-810.814	19.620	1
	1006:1.2 DEAC	19.620	25.035	19.620	3	-269.423	19.620	1
	1007:1.2 DEAC	19.620	62.905	19.620	3	-822.065	19.620	1
	1008:1.2 DEAC	19.620	81.056	19.620	3	-1.27E+3	19.620	1
	1009:1.2 DEAC	19.620	63.652	19.620	3	-517.281	19.620	1
	1010:1.2 DEAC	19.620	90.302	19.620	3	-2E+3	19.620	1
	1011:1.2 DEAC	19.620	108.452	19.620	3	-2.45E+3	19.620	1
	1012:1.2 DEAC	19.620	91.049	19.620	3	-1.7E+3	19.620	1
	1013:1.2 DEAC	19.620	43.185	19.620	3	-714.108	19.620	1
	1014:1.2 DEAC	19.620	67.670	8.175	1	-4.812	9.810	3
	1015:1.2 DEAC	19.620	73.170	19.620	3	-1.33E+3	19.620	1
	1016:1.2 DEAC	19.620	199.332	11.445	1			

CONNECTED User: Brett Eisenhauer

Part

Job Title Learning Experience Sloping Awning

Ref

By Date 03-Mar-23 Chd

Client Capitol Awning

File Sloped Awning 6ft Analys Date/Time 10-May-2023 14:41

Beam Combined Axial and Bending Stresses Summary Cont...

Beam	L/C	Length (in)	Max Comp			Max Tens		
			Stress (psi)	d (in)	Corner	Stress (psi)	d (in)	Corner
	1017:1.2 DEAC	19.620	81.732	19.620	3	-1.7E+3	19.620	1
	1018:1.2 DEAC	19.620	46.924	19.620	3	-201.246	19.620	1
	1019:1.2 DEAC	19.620	61.335	19.620	3	-1.16E+3	19.620	1
	1020:1.2 DEAC	19.620	344.158	16.350	1			
	1021:0.9 DEAC	19.620	55.077	19.620	3	-1.09E+3	19.620	1
	1022:0.9 DEAC	19.620	407.500	19.620	1			
	1023:1.2 DEAC	19.620	33.193	19.620	3	-485.979	19.620	1
	1024:0.9 DEAC	19.620	18.776	19.620	3	-202.067	19.620	1
	1025:1 DEAD	19.620	20.862	19.620	3	-224.519	19.620	1
	1026:1 DEAD +	19.620	61.654	19.620	3	-1.31E+3	19.620	1
	1027:1 DEAD +	19.620	44.531	19.620	3	-569.920	19.620	1
	1028:1 DEAD +	19.620	38.614	19.620	3	-483.570	19.620	1
	1029:1 DEAD +	19.620	51.456	19.620	3	-1.04E+3	19.620	1
	1030:1 DEAD +	19.620	42.643	19.620	3	-758.141	19.620	1
	1031:1 DEAD +	19.620	154.130	13.080	1			
	1032:1 DEAD +	19.620	65.840	19.620	3	-1.15E+3	19.620	1
	1033:1 DEAD +	19.620	39.734	19.620	3	-26.394	19.620	1
	1034:1 DEAD +	19.620	78.682	19.620	3	-1.7E+3	19.620	1
	1035:1 DEAD +	19.620	52.576	19.620	3	-579.430	19.620	1
	1036:1 DEAD +	19.620	48.088	19.620	3	-891.547	19.620	1
	1037:1 DEAD +	19.620	238.538	14.715	1			
	1038:0.6 DEAC	19.620	34.298	19.620	3	-668.334	19.620	1
	1039:0.6 DEAC	19.620	231.291	17.985	1			
	1040:0.6 DEAC	19.620	12.517	19.620	3	-134.711	19.620	1
152	1:DEAD	1.144	223.654	1.144	3	-352.779	1.144	1
	2:LIVE	1.144	357.842	1.144	3	-564.279	1.144	1
	3:SNOW	1.144	1.18E+3	1.144	3	-1.85E+3	1.144	1
	4:WIND+	1.144	961.687	1.144	3	-1.52E+3	1.144	1
	5:WIND-	1.144	1.11E+3	1.144	1	-702.241	1.144	3
	1003:1.4 DEAC	1.144	313.116	1.144	3	-493.890	1.144	1
	1004:1.2 DEAC	1.144	447.306	1.144	3	-705.474	1.144	1
	1005:1.2 DEAC	1.144	856.579	1.144	3	-1.35E+3	1.144	1
	1006:1.2 DEAC	1.144	268.385	1.144	3	-423.335	1.144	1
	1007:1.2 DEAC	1.144	840.932	1.144	3	-1.33E+3	1.144	1
	1008:1.2 DEAC	1.144	1.32E+3	1.144	3	-2.08E+3	1.144	1
	1009:1.2 DEAC	1.144	489.812	1.144	3	-772.896	1.144	1
	1010:1.2 DEAC	1.144	2.15E+3	1.144	3	-3.39E+3	1.144	1
	1011:1.2 DEAC	1.144	2.63E+3	1.144	3	-4.15E+3	1.144	1
	1012:1.2 DEAC	1.144	1.8E+3	1.144	3	-2.84E+3	1.144	1
	1013:1.2 DEAC	1.144	749.229	1.144	3	-1.18E+3	1.144	1
	1014:1.2 DEAC	1.144	129.950	1.144	1	-82.735	1.144	3
	1015:1.2 DEAC	1.144	1.41E+3	1.144	3	-2.22E+3	1.144	1
	1016:1.2 DEAC	1.144	401.095	1.144	1	-254.935	1.144	3
	1017:1.2 DEAC	1.144	1.82E+3	1.144	3	-2.87E+3	1.144	1

CONNECTED User: Brett Eisenhauer

Job Title Learning Experience Sloping Awning

Part

Ref

By Date 03-Mar-23 Chd

Client Capitol Awning

File Sloped Awning 6ft Analys Date/Time 10-May-2023 14:41

Beam Combined Axial and Bending Stresses Summary Cont...

Beam	L/C	Length (in)	Max Comp			Max Tens		
			Stress (psi)	d (in)	Corner	Stress (psi)	d (in)	Corner
	1018:1.2 DEAC	1.144	154.338	1.144	3	-243.979	1.144	1
	1019:1.2 DEAC	1.144	1.23E+3	1.144	3	-1.94E+3	1.144	1
	1020:1.2 DEAC	1.144	683.234	1.144	1	-433.856	1.144	3
	1021:0.9 DEAC	1.144	1.16E+3	1.144	3	-1.83E+3	1.144	1
	1022:0.9 DEAC	1.144	789.068	1.144	1	-500.952	1.144	3
	1023:1.2 DEAC	1.144	503.663	1.144	3	-794.220	1.144	1
	1024:0.9 DEAC	1.144	201.289	1.144	3	-317.501	1.144	1
	1025:1 DEAD	1.144	223.654	1.144	3	-352.779	1.144	1
	1026:1 DEAD +	1.144	1.4E+3	1.144	3	-2.21E+3	1.144	1
	1027:1 DEAD +	1.144	581.496	1.144	3	-917.058	1.144	1
	1028:1 DEAD +	1.144	492.036	1.144	3	-775.988	1.144	1
	1029:1 DEAD +	1.144	1.11E+3	1.144	3	-1.74E+3	1.144	1
	1030:1 DEAD +	1.144	800.666	1.144	3	-1.26E+3	1.144	1
	1031:1 DEAD +	1.144	311.162	1.144	1	-197.690	1.144	3
	1032:1 DEAD +	1.144	1.21E+3	1.144	3	-1.91E+3	1.144	1
	1033:1 DEAD +	1.144	53.939	1.144	1	-34.645	1.144	3
	1034:1 DEAD +	1.144	1.83E+3	1.144	3	-2.88E+3	1.144	1
	1035:1 DEAD +	1.144	579.264	1.144	3	-913.672	1.144	1
	1036:1 DEAD +	1.144	944.919	1.144	3	-1.49E+3	1.144	1
	1037:1 DEAD +	1.144	477.148	1.144	1	-303.027	1.144	3
	1038:0.6 DEAC	1.144	711.205	1.144	3	-1.12E+3	1.144	1
	1039:0.6 DEAC	1.144	452.274	1.144	1	-287.152	1.144	3
	1040:0.6 DEAC	1.144	134.193	1.144	3	-211.667	1.144	1
153	1:DEAD	8.238	162.465	8.238	3	-291.472	8.238	1
	2:LIVE	8.238	259.862	8.238	3	-466.176	8.238	1
	3:SNOW	8.238	853.985	8.238	3	-1.53E+3	8.238	1
	4:WIND+	8.238	698.150	8.238	3	-1.25E+3	8.238	1
	5:WIND-	8.238	913.985	8.238	1	-509.576	8.238	3
	1003:1.4 DEAC	8.238	227.451	8.238	3	-408.061	8.238	1
	1004:1.2 DEAC	8.238	324.889	8.238	3	-582.854	8.238	1
	1005:1.2 DEAC	8.238	621.951	8.238	3	-1.12E+3	8.238	1
	1006:1.2 DEAC	8.238	194.958	8.238	3	-349.766	8.238	1
	1007:1.2 DEAC	8.238	610.738	8.238	3	-1.1E+3	8.238	1
	1008:1.2 DEAC	8.238	959.812	8.238	3	-1.72E+3	8.238	1
	1009:1.2 DEAC	8.238	355.950	8.238	3	-638.655	8.238	1
	1010:1.2 DEAC	8.238	1.56E+3	8.238	3	-2.8E+3	8.238	1
	1011:1.2 DEAC	8.238	1.91E+3	8.238	3	-3.43E+3	8.238	1
	1012:1.2 DEAC	8.238	1.31E+3	8.238	3	-2.34E+3	8.238	1
	1013:1.2 DEAC	8.238	544.033	8.238	3	-975.938	8.238	1
	1014:1.2 DEAC	8.238	126.962	0	3	-78.233	0	1
	1015:1.2 DEAC	8.238	1.02E+3	8.238	3	-1.84E+3	8.238	1
	1016:1.2 DEAC	8.238	356.212	0	3	-207.650	0	1
	1017:1.2 DEAC	8.238	1.32E+3	8.238	3	-2.37E+3	8.238	1
	1018:1.2 DEAC	8.238	112.375	8.238	3	-201.716	8.238	1

CONNECTED User: Brett Eisenhauer

Job Title Learning Experience Sloping Awning

Part

Ref

By

Date 03-Mar-23

Chd

Client Capitol Awning

File Sloped Awning 6ft Analys

Date/Time 10-May-2023 14:41

Beam Combined Axial and Bending Stresses Summary Cont...

Beam	L/C	Length (in)	Max Comp			Max Tens		
			Stress (psi)	d (in)	Corner	Stress (psi)	d (in)	Corner
	1019:1.2 DEAC	8.238	893.108	8.238	3	-1.6E+3	8.238	1
	1020:1.2 DEAC	8.238	573.187	0	3	-321.861	0	1
	1021:0.9 DEAC	8.238	844.368	8.238	3	-1.51E+3	8.238	1
	1022:0.9 DEAC	8.238	653.002	0	3	-363.357	8.238	3
	1023:1.2 DEAC	8.238	365.755	8.238	3	-656.140	8.238	1
	1024:0.9 DEAC	8.238	146.219	8.238	3	-262.325	8.238	1
	1025:1 DEAD	8.238	162.465	8.238	3	-291.472	8.238	1
	1026:1 DEAD +	8.238	1.02E+3	8.238	3	-1.82E+3	8.238	1
	1027:1 DEAD +	8.238	422.327	8.238	3	-757.648	8.238	1
	1028:1 DEAD +	8.238	357.362	8.238	3	-641.104	8.238	1
	1029:1 DEAD +	8.238	802.954	8.238	3	-1.44E+3	8.238	1
	1030:1 DEAD +	8.238	581.355	8.238	3	-1.04E+3	8.238	1
	1031:1 DEAD +	8.238	269.418	0	3	-154.524	0	1
	1032:1 DEAD +	8.238	880.974	8.238	3	-1.58E+3	8.238	1
	1033:1 DEAD +	8.238	77.822	0	3	-56.297	0	1
	1034:1 DEAD +	8.238	1.33E+3	8.238	3	-2.38E+3	8.238	1
	1035:1 DEAD +	8.238	420.772	8.238	3	-754.885	8.238	1
	1036:1 DEAD +	8.238	686.077	8.238	3	-1.23E+3	8.238	1
	1037:1 DEAD +	8.238	403.285	0	3	-227.613	0	1
	1038:0.6 DEAC	8.238	516.369	8.238	3	-926.289	8.238	1
	1039:0.6 DEAC	8.238	375.838	0	3	-209.656	0	1
	1040:0.6 DEAC	8.238	97.479	8.238	3	-174.883	8.238	1
154	1:DEAD	1.000	198.413	1.000	1	-306.583	1.000	3
	2:LIVE	1.000	327.870	1.000	1	-500.040	1.000	3
	3:SNOW	1.000	1.12E+3	1.000	1	-1.68E+3	1.000	3
	4:WIND+	1.000	910.426	1.000	1	-1.37E+3	1.000	3
	5:WIND-	1.000	1.03E+3	1.000	3	-694.838	1.000	1
	1003:1.4 DEAC	1.000	277.779	1.000	1	-429.216	1.000	3
	1004:1.2 DEAC	1.000	402.031	1.000	1	-617.919	1.000	3
	1005:1.2 DEAC	1.000	796.874	1.000	1	-1.21E+3	1.000	3
	1006:1.2 DEAC	1.000	238.096	1.000	1	-367.899	1.000	3
	1007:1.2 DEAC	1.000	762.689	1.000	1	-1.17E+3	1.000	3
	1008:1.2 DEAC	1.000	1.22E+3	1.000	1	-1.85E+3	1.000	3
	1009:1.2 DEAC	1.000	415.270	1.000	1	-653.826	1.000	3
	1010:1.2 DEAC	1.000	2.03E+3	1.000	1	-3.06E+3	1.000	3
	1011:1.2 DEAC	1.000	2.48E+3	1.000	1	-3.74E+3	1.000	3
	1012:1.2 DEAC	1.000	1.68E+3	1.000	1	-2.54E+3	1.000	3
	1013:1.2 DEAC	1.000	693.309	1.000	1	-1.05E+3	1.000	3
	1014:1.2 DEAC	1.000	146.239	1.000	3	-109.323	1.000	1
	1015:1.2 DEAC	1.000	1.31E+3	1.000	1	-1.99E+3	1.000	3
	1016:1.2 DEAC	1.000	410.357	1.000	3	-292.807	1.000	1
	1017:1.2 DEAC	1.000	1.71E+3	1.000	1	-2.58E+3	1.000	3
	1018:1.2 DEAC	1.000	102.036	1.000	1	-179.689	1.000	3
	1019:1.2 DEAC	1.000	1.15E+3	1.000	1	-1.74E+3	1.000	3

CONNECTED User: Brett Eisenhauer

Job Title Learning Experience Sloping Awning

Part

Ref

By Date 03-Mar-23 Chd

Client Capitol Awning

File Sloped Awning 6ft Analys Date/Time 10-May-2023 14:41

Beam Combined Axial and Bending Stresses Summary Cont...

Beam	L/C	Length (in)	Max Comp			Max Tens		
			Stress (psi)	d (in)	Corner	Stress (psi)	d (in)	Corner
	1020:1.2 DEAC	1.000	660.377	1.000	3	-456.742	1.000	1
	1021:0.9 DEAC	1.000	1.09E+3	1.000	1	-1.65E+3	1.000	3
	1022:0.9 DEAC	1.000	752.352	1.000	3	-516.266	1.000	1
	1023:1.2 DEAC	1.000	461.607	1.000	1	-703.926	1.000	3
	1024:0.9 DEAC	1.000	178.572	1.000	1	-275.924	1.000	3
	1025:1 DEAD	1.000	198.413	1.000	1	-306.583	1.000	3
	1026:1 DEAD +	1.000	1.32E+3	1.000	1	-1.99E+3	1.000	3
	1027:1 DEAD +	1.000	526.284	1.000	1	-806.623	1.000	3
	1028:1 DEAD +	1.000	444.316	1.000	1	-681.613	1.000	3
	1029:1 DEAD +	1.000	1.04E+3	1.000	1	-1.57E+3	1.000	3
	1030:1 DEAD +	1.000	744.669	1.000	1	-1.13E+3	1.000	3
	1031:1 DEAD +	1.000	310.383	1.000	3	-218.489	1.000	1
	1032:1 DEAD +	1.000	1.13E+3	1.000	1	-1.71E+3	1.000	3
	1033:1 DEAD +	1.000	89.594	1.000	3	-76.812	1.000	1
	1034:1 DEAD +	1.000	1.72E+3	1.000	1	-2.59E+3	1.000	3
	1035:1 DEAD +	1.000	515.452	1.000	1	-795.475	1.000	3
	1036:1 DEAD +	1.000	881.233	1.000	1	-1.33E+3	1.000	3
	1037:1 DEAD +	1.000	464.625	1.000	3	-322.715	1.000	1
	1038:0.6 DEAC	1.000	665.303	1.000	1	-1.01E+3	1.000	3
	1039:0.6 DEAC	1.000	433.016	1.000	3	-297.855	1.000	1
	1040:0.6 DEAC	1.000	119.048	1.000	1	-183.950	1.000	3
155	1:DEAD	37.562	137.092	0	3	-9.139	0	1
	2:LIVE	37.562	203.915	0	3	-13.761	37.562	3
	3:SNOW	37.562	738.318	37.562	1	-154.791	37.562	3
	4:WIND+	37.562	597.606	37.562	1	-117.800	37.562	3
	5:WIND-	37.562	168.884	37.562	3	-492.911	37.562	1
	1003:1.4 DEAC	37.562	191.929	0	3	-12.795	0	1
	1004:1.2 DEAC	37.562	266.468	0	3	-16.536	0	1
	1005:1.2 DEAC	37.562	505.850	37.562	1	-66.165	37.562	3
	1006:1.2 DEAC	37.562	164.510	0	3	-10.967	0	1
	1007:1.2 DEAC	37.562	490.775	0	3	-28.787	0	1
	1008:1.2 DEAC	37.562	758.461	37.562	1	-69.687	37.562	3
	1009:1.2 DEAC	37.562	328.780	0	3	-26.462	0	1
	1010:1.2 DEAC	37.562	1.32E+3	37.562	1	-236.435	37.562	3
	1011:1.2 DEAC	37.562	1.62E+3	37.562	1	-295.335	37.562	3
	1012:1.2 DEAC	37.562	1.07E+3	37.562	1	-151.993	37.562	3
	1013:1.2 DEAC	37.562	435.494	37.562	1	-47.669	37.562	3
	1014:1.2 DEAC	37.562	95.672	37.562	3	-109.764	37.562	1
	1015:1.2 DEAC	37.562	835.225	37.562	1	-113.450	37.562	3
	1016:1.2 DEAC	37.562	173.234	37.562	3	-255.292	37.562	1
	1017:1.2 DEAC	37.562	1.1E+3	37.562	1	-183.965	37.562	3
	1018:1.2 DEAC	37.562	146.289	0	3	-17.981	0	1
	1019:1.2 DEAC	37.562	734.297	37.562	1	-106.569	37.562	3
	1020:1.2 DEAC	37.562	180.115	37.562	3	-356.220	37.562	1

CONNECTED User: Brett Eisenhauer

Job Title Learning Experience Sloping Awning

Part

Ref

By Date 03-Mar-23 Chd

Client Capitol Awning

File Sloped Awning 6ft Analys Date/Time 10-May-2023 14:41

Beam Combined Axial and Bending Stresses Summary Cont...

Beam	L/C	Length (in)	Max Comp			Max Tens		
			Stress (psi)	d (in)	Corner	Stress (psi)	d (in)	Corner
	1021:0.9 DEAC	37.562	700.125	37.562	1	-109.377	37.562	3
	1022:0.9 DEAC	37.562	177.307	37.562	3	-390.392	37.562	1
	1023:1.2 DEAC	37.562	286.818	0	3	-19.728	37.562	3
	1024:0.9 DEAC	37.562	123.383	0	3	-8.225	0	1
	1025:1 DEAD	37.562	137.092	0	3	-9.139	0	1
	1026:1 DEAD +	37.562	852.227	37.562	1	-145.432	37.562	3
	1027:1 DEAD +	37.562	341.007	0	3	-20.276	0	1
	1028:1 DEAD +	37.562	290.029	0	3	-17.492	0	1
	1029:1 DEAD +	37.562	667.648	37.562	1	-106.735	37.562	3
	1030:1 DEAD +	37.562	472.473	37.562	1	-61.321	37.562	3
	1031:1 DEAD +	37.562	110.689	37.562	3	-181.837	37.562	1
	1032:1 DEAD +	37.562	713.505	37.562	1	-89.312	37.562	3
	1033:1 DEAD +	37.562	125.701	37.562	3	-104.383	37.562	1
	1034:1 DEAD +	37.562	1.12E+3	37.562	1	-195.084	37.562	3
	1035:1 DEAD +	37.562	352.753	0	3	-23.147	0	1
	1036:1 DEAD +	37.562	562.114	37.562	1	-78.991	37.562	3
	1037:1 DEAD +	37.562	136.022	37.562	3	-255.774	37.562	1
	1038:0.6 DEAC	37.562	426.909	37.562	1	-65.065	37.562	3
	1039:0.6 DEAC	37.562	106.946	37.562	3	-227.401	37.562	1
	1040:0.6 DEAC	37.562	82.255	0	3	-5.483	0	1
156	1:DEAD	23.903	107.836	0	1	-163.155	0	2
	2:LIVE	23.903	173.371	0	1	-252.311	0	2
	3:SNOW	23.903	573.134	0	1	-796.156	0	2
	4:WIND+	23.903	468.278	0	1	-653.508	0	2
	5:WIND-	23.903	452.014	0	2	-344.355	0	1
	1003:1.4 DEAC	23.903	150.970	0	1	-228.418	0	2
	1004:1.2 DEAC	23.903	216.089	0	1	-321.942	0	2
	1005:1.2 DEAC	23.903	415.970	0	1	-593.865	0	2
	1006:1.2 DEAC	23.903	129.403	0	1	-195.787	0	2
	1007:1.2 DEAC	23.903	406.797	0	1	-599.483	0	2
	1008:1.2 DEAC	23.903	640.936	0	1	-926.238	0	2
	1009:1.2 DEAC	23.903	234.619	0	1	-373.476	0	2
	1010:1.2 DEAC	23.903	1.05E+3	0	1	-1.47E+3	0	2
	1011:1.2 DEAC	23.903	1.28E+3	0	1	-1.8E+3	0	2
	1012:1.2 DEAC	23.903	874.240	0	1	-1.24E+3	0	2
	1013:1.2 DEAC	23.903	363.542	0	1	-522.541	0	2
	1014:1.2 DEAC	23.903	30.220	0	2	-42.774	0	1
	1015:1.2 DEAC	23.903	684.367	0	1	-975.450	0	2
	1016:1.2 DEAC	23.903	130.072	0	2	-128.267	0	1
	1017:1.2 DEAC	23.903	884.249	0	1	-1.25E+3	0	2
	1018:1.2 DEAC	23.903	71.615	0	1	-141.851	0	2
	1019:1.2 DEAC	23.903	597.681	0	1	-849.295	0	2
	1020:1.2 DEAC	23.903	256.227	0	2	-214.952	0	1
	1021:0.9 DEAC	23.903	565.331	0	1	-800.348	0	2

CONNECTED User: Brett Eisenhauer

Job Title Learning Experience Sloping Awning

Part

Ref

By Date 03-Mar-23 Chd

Client Capitol Awning

File Sloped Awning 6ft Analys Date/Time 10-May-2023 14:41

Beam Combined Axial and Bending Stresses Summary Cont...

Beam	L/C	Length (in)	Max Comp			Max Tens		
			Stress (psi)	d (in)	Corner	Stress (psi)	d (in)	Corner
	1022:0.9 DEAC	23.903	305.174	0	2	-247.303	0	1
	1023:1.2 DEAC	23.903	244.030	0	1	-355.018	0	2
	1024:0.9 DEAC	23.903	97.052	0	1	-146.840	0	2
	1025:1 DEAD	23.903	107.836	0	1	-163.155	0	2
	1026:1 DEAD +	23.903	680.970	0	1	-959.312	0	2
	1027:1 DEAD +	23.903	281.207	0	1	-415.466	0	2
	1028:1 DEAD +	23.903	237.864	0	1	-352.388	0	2
	1029:1 DEAD +	23.903	537.687	0	1	-760.273	0	2
	1030:1 DEAD +	23.903	388.803	0	1	-555.260	0	2
	1031:1 DEAD +	23.903	108.053	0	2	-98.777	0	1
	1032:1 DEAD +	23.903	589.073	0	1	-842.519	0	2
	1033:1 DEAD +	23.903				-20.402	0	1
	1034:1 DEAD +	23.903	888.895	0	1	-1.25E+3	0	2
	1035:1 DEAD +	23.903	279.420	0	1	-421.262	0	2
	1036:1 DEAD +	23.903	459.045	0	1	-653.287	0	2
	1037:1 DEAD +	23.903	175.855	0	2	-150.431	0	1
	1038:0.6 DEAC	23.903	345.669	0	1	-489.998	0	2
	1039:0.6 DEAC	23.903	173.315	0	2	-141.912	0	1
	1040:0.6 DEAC	23.903	64.702	0	1	-97.893	0	2
157	1:DEAD	23.233	145.556	23.233	3	-66.487	23.233	1
	2:LIVE	23.233	227.899	23.233	3	-104.293	23.233	1
	3:SNOW	23.233	730.191	23.233	3	-334.910	23.233	1
	4:WIND+	23.233	598.442	23.233	3	-274.420	23.233	1
	5:WIND-	23.233	194.374	23.233	1	-422.610	23.233	3
	1003:1.4 DEAC	23.233	203.779	23.233	3	-93.082	23.233	1
	1004:1.2 DEAC	23.233	288.617	23.233	3	-131.931	23.233	1
	1005:1.2 DEAC	23.233	539.763	23.233	3	-247.240	23.233	1
	1006:1.2 DEAC	23.233	174.668	23.233	3	-79.785	23.233	1
	1007:1.2 DEAC	23.233	539.306	23.233	3	-246.654	23.233	1
	1008:1.2 DEAC	23.233	838.528	23.233	3	-383.864	23.233	1
	1009:1.2 DEAC	23.233	328.002	23.233	3	-149.467	23.233	1
	1010:1.2 DEAC	23.233	1.34E+3	23.233	3	-615.640	23.233	1
	1011:1.2 DEAC	23.233	1.64E+3	23.233	3	-752.850	23.233	1
	1012:1.2 DEAC	23.233	1.13E+3	23.233	3	-518.453	23.233	1
	1013:1.2 DEAC	23.233	473.889	23.233	3	-216.995	23.233	1
	1014:1.2 DEAC	23.233	45.209	0	3	-60.000	0	1
	1015:1.2 DEAC	23.233	887.060	23.233	3	-406.352	23.233	1
	1016:1.2 DEAC	23.233	80.625	0	3	-145.118	0	1
	1017:1.2 DEAC	23.233	1.14E+3	23.233	3	-521.660	23.233	1
	1018:1.2 DEAC	23.233	117.154	23.233	3	-52.865	23.233	1
	1019:1.2 DEAC	23.233	773.110	23.233	3	-354.205	23.233	1
	1020:1.2 DEAC	23.233	114.589	23.233	1	-247.942	23.233	3
	1021:0.9 DEAC	23.233	729.443	23.233	3	-334.259	23.233	1
	1022:0.9 DEAC	23.233	134.536	23.233	1	-291.609	23.233	3

CONNECTED User: Brett Eisenhauer

Job Title Learning Experience Sloping Awning

Part

Ref

By Date 03-Mar-23 Chd

Client Capitol Awning

File Sloped Awning 6ft Analys Date/Time 10-May-2023 14:41

Beam Combined Axial and Bending Stresses Summary Cont...

Beam	L/C	Length (in)	Max Comp			Max Tens		
			Stress (psi)	d (in)	Corner	Stress (psi)	d (in)	Corner
	1023:1.2 DEAC	23.233	320.706	23.233	3	-146.767	23.233	1
	1024:0.9 DEAC	23.233	131.001	23.233	3	-59.839	23.233	1
	1025:1 DEAD	23.233	145.556	23.233	3	-66.487	23.233	1
	1026:1 DEAD +	23.233	875.747	23.233	3	-401.397	23.233	1
	1027:1 DEAD +	23.233	373.456	23.233	3	-170.780	23.233	1
	1028:1 DEAD +	23.233	316.481	23.233	3	-144.707	23.233	1
	1029:1 DEAD +	23.233	693.200	23.233	3	-317.670	23.233	1
	1030:1 DEAD +	23.233	504.622	23.233	3	-231.139	23.233	1
	1031:1 DEAD +	23.233	51.107	0	3	-108.009	23.233	3
	1032:1 DEAD +	23.233	765.312	23.233	3	-350.522	23.233	1
	1033:1 DEAD +	23.233	60.268	0	3	-53.137	0	1
	1034:1 DEAD +	23.233	1.14E+3	23.233	3	-523.485	23.233	1
	1035:1 DEAD +	23.233	376.242	23.233	3	-171.889	23.233	1
	1036:1 DEAD +	23.233	594.388	23.233	3	-272.302	23.233	1
	1037:1 DEAD +	23.233	79.293	23.233	1	-171.401	23.233	3
	1038:0.6 DEAC	23.233	446.399	23.233	3	-204.544	23.233	1
	1039:0.6 DEAC	23.233	76.732	23.233	1	-166.232	23.233	3
	1040:0.6 DEAC	23.233	87.334	23.233	3	-39.892	23.233	1
158	1:DEAD	13.334	148.790	0	2	-160.265	0	1
	2:LIVE	13.334	244.430	0	2	-258.531	0	1
	3:SNOW	13.334	827.831	0	2	-857.954	0	1
	4:WIND+	13.334	674.808	0	2	-700.728	0	1
	5:WIND-	13.334	517.770	0	1	-511.122	0	2
	1003:1.4 DEAC	13.334	208.306	0	2	-224.371	0	1
	1004:1.2 DEAC	13.334	300.763	0	2	-321.584	0	1
	1005:1.2 DEAC	13.334	592.464	0	2	-621.295	0	1
	1006:1.2 DEAC	13.334	178.548	0	2	-192.318	0	1
	1007:1.2 DEAC	13.334	569.636	0	2	-605.969	0	1
	1008:1.2 DEAC	13.334	907.040	0	2	-956.333	0	1
	1009:1.2 DEAC	13.334	314.075	0	2	-347.084	0	1
	1010:1.2 DEAC	13.334	1.5E+3	0	2	-1.57E+3	0	1
	1011:1.2 DEAC	13.334	1.84E+3	0	2	-1.92E+3	0	1
	1012:1.2 DEAC	13.334	1.25E+3	0	2	-1.31E+3	0	1
	1013:1.2 DEAC	13.334	515.952	0	2	-542.683	0	1
	1014:1.2 DEAC	13.334	66.567	0	1	-77.013	0	2
	1015:1.2 DEAC	13.334	975.571	0	2	-1.02E+3	0	1
	1016:1.2 DEAC	13.334	196.186	0	1	-210.359	0	2
	1017:1.2 DEAC	13.334	1.27E+3	0	2	-1.32E+3	0	1
	1018:1.2 DEAC	13.334	81.341	0	2	-103.525	0	1
	1019:1.2 DEAC	13.334	853.356	0	2	-893.047	0	1
	1020:1.2 DEAC	13.334	325.452	0	1	-332.574	0	2
	1021:0.9 DEAC	13.334	808.719	0	2	-844.967	0	1
	1022:0.9 DEAC	13.334	373.531	0	1	-377.211	0	2
	1023:1.2 DEAC	13.334	344.115	0	2	-363.909	0	1

CONNECTED User: Brett Eisenhauer

Job Title Learning Experience Sloping Awning

Part

Ref

By Date 03-Mar-23 Chd

Client Capitol Awning

File Sloped Awning 6ft Analys Date/Time 10-May-2023 14:41

Beam Combined Axial and Bending Stresses Summary Cont...

Beam	L/C	Length (in)	Max Comp			Max Tens		
			Stress (psi)	d (in)	Corner	Stress (psi)	d (in)	Corner
	1024:0.9 DEAC	13.334	133.911	0	2	-144.239	0	1
	1025:1 DEAD	13.334	148.790	0	2	-160.265	0	1
	1026:1 DEAD +	13.334	976.621	0	2	-1.02E+3	0	1
	1027:1 DEAD +	13.334	393.220	0	2	-418.797	0	1
	1028:1 DEAD +	13.334	332.113	0	2	-354.164	0	1
	1029:1 DEAD +	13.334	769.664	0	2	-803.731	0	1
	1030:1 DEAD +	13.334	553.675	0	2	-580.702	0	1
	1031:1 DEAD +	13.334	150.397	0	1	-157.883	0	2
	1032:1 DEAD +	13.334	838.218	0	2	-879.710	0	1
	1033:1 DEAD +	13.334	34.164	0	1	-51.229	0	2
	1034:1 DEAD +	13.334	1.28E+3	0	2	-1.33E+3	0	1
	1035:1 DEAD +	13.334	386.322	0	2	-415.403	0	1
	1036:1 DEAD +	13.334	654.896	0	2	-685.812	0	1
	1037:1 DEAD +	13.334	228.062	0	1	-234.552	0	2
	1038:0.6 DEAC	13.334	494.159	0	2	-516.596	0	1
	1039:0.6 DEAC	13.334	214.503	0	1	-217.399	0	2
	1040:0.6 DEAC	13.334	89.274	0	2	-96.159	0	1
160	1:DEAD	1.000	63.810	0	1			
	2:LIVE	1.000	95.012	0	1			
	3:SNOW	1.000	287.276	1.000	1			
	4:WIND+	1.000	235.422	0	1			
	5:WIND-	1.000				-188.648	0	1
	1003:1.4 DEAC	1.000	89.333	0	1			
	1004:1.2 DEAC	1.000	124.077	0	1			
	1005:1.2 DEAC	1.000	219.244	0	1			
	1006:1.2 DEAC	1.000	76.571	0	1			
	1007:1.2 DEAC	1.000	228.590	0	1			
	1008:1.2 DEAC	1.000	346.301	0	1			
	1009:1.2 DEAC	1.000	152.847	0	1			
	1010:1.2 DEAC	1.000	533.124	0	1			
	1011:1.2 DEAC	1.000	650.834	0	1			
	1012:1.2 DEAC	1.000	457.381	0	1			
	1013:1.2 DEAC	1.000	194.282	0	1			
	1014:1.2 DEAC	1.000	0.829	0	3	-40.823	0	1
	1015:1.2 DEAC	1.000	359.499	0	1			
	1016:1.2 DEAC	1.000				-95.954	0	1
	1017:1.2 DEAC	1.000	454.666	0	1			
	1018:1.2 DEAC	1.000	67.758	0	1			
	1019:1.2 DEAC	1.000	311.993	0	1			
	1020:1.2 DEAC	1.000				-135.147	0	1
	1021:0.9 DEAC	1.000	292.850	0	1			
	1022:0.9 DEAC	1.000				-148.523	0	1
	1023:1.2 DEAC	1.000	133.640	0	1			
	1024:0.9 DEAC	1.000	57.429	0	1			

CONNECTED User: Brett Eisenhauer

Job Title Learning Experience Sloping Awning

Part

Ref

By Date 03-Mar-23 Chd

Client Capitol Awning

File Sloped Awning 6ft Analys Date/Time 10-May-2023 14:41

Beam Combined Axial and Bending Stresses Summary Cont...

Beam	L/C	Length (in)	Max Comp			Max Tens		
			Stress (psi)	d (in)	Corner	Stress (psi)	d (in)	Corner
	1025:1 DEAD	1.000	63.810	0	1			
	1026:1 DEAD +	1.000	349.155	0	1			
	1027:1 DEAD +	1.000	158.821	0	1			
	1028:1 DEAD +	1.000	135.068	0	1			
	1029:1 DEAD +	1.000	277.818	0	1			
	1030:1 DEAD +	1.000	205.063	0	1			
	1031:1 DEAD +	1.000				-68.605	0	1
	1032:1 DEAD +	1.000	311.635	0	1			
	1033:1 DEAD +	1.000	21.454	0	3	-38.113	0	1
	1034:1 DEAD +	1.000	454.385	0	1			
	1035:1 DEAD +	1.000	164.204	0	1			
	1036:1 DEAD +	1.000	240.376	0	1			
	1037:1 DEAD +	1.000				-96.902	0	1
	1038:0.6 DEAC	1.000	179.539	0	1			
	1039:0.6 DEAC	1.000				-86.439	0	1
	1040:0.6 DEAC	1.000	38.286	0	1			
161	1:DEAD	1.000	143.741	0	3	-44.476	0	1
	2:LIVE	1.000	218.965	0	3	-60.264	0	1
	3:SNOW	1.000	677.830	0	3	-156.570	0	1
	4:WIND+	1.000	557.472	0	3	-131.310	0	1
	5:WIND-	1.000	64.462	0	1	-375.303	0	3
	1003:1.4 DEAC	1.000	201.238	0	3	-62.266	0	1
	1004:1.2 DEAC	1.000	281.972	0	3	-83.502	0	1
	1005:1.2 DEAC	1.000	511.404	0	3	-131.656	0	1
	1006:1.2 DEAC	1.000	172.489	0	3	-53.371	0	1
	1007:1.2 DEAC	1.000	522.833	0	3	-149.792	0	1
	1008:1.2 DEAC	1.000	801.569	0	3	-215.447	0	1
	1009:1.2 DEAC	1.000	335.182	0	3	-117.561	0	1
	1010:1.2 DEAC	1.000	1.26E+3	0	3	-303.883	0	1
	1011:1.2 DEAC	1.000	1.54E+3	0	3	-369.538	0	1
	1012:1.2 DEAC	1.000	1.07E+3	0	3	-271.653	0	1
	1013:1.2 DEAC	1.000	451.225	0	3	-119.025	0	1
	1014:1.2 DEAC	1.000				-21.140	0	1
	1015:1.2 DEAC	1.000	839.444	0	3	-214.812	0	1
	1016:1.2 DEAC	1.000				-96.465	1.000	3
	1017:1.2 DEAC	1.000	1.07E+3	0	3	-262.966	0	1
	1018:1.2 DEAC	1.000	136.101	0	3	-67.194	0	1
	1019:1.2 DEAC	1.000	729.961	0	3	-184.680	0	1
	1020:1.2 DEAC	1.000	11.091	0	1	-202.814	0	3
	1021:0.9 DEAC	1.000	686.839	0	3	-171.338	0	1
	1022:0.9 DEAC	1.000	24.434	0	1	-245.936	0	3
	1023:1.2 DEAC	1.000	308.055	0	3	-84.685	0	1
	1024:0.9 DEAC	1.000	129.367	0	3	-40.028	0	1
	1025:1 DEAD	1.000	143.741	0	3	-44.476	0	1

CONNECTED User: Brett Eisenhauer

Job Title Learning Experience Sloping Awning

Part

Ref

By Date 03-Mar-23 Chd

Client Capitol Awning

File Sloped Awning 6ft Analys Date/Time 10-May-2023 14:41

Beam Combined Axial and Bending Stresses Summary Cont...

Beam	L/C	Length (in)	Max Comp			Max Tens		
			Stress (psi)	d (in)	Corner	Stress (psi)	d (in)	Corner
	1026:1 DEAD +	1.000	821.571	0	3	-201.046	0	1
	1027:1 DEAD +	1.000	362.706	0	3	-104.739	0	1
	1028:1 DEAD +	1.000	307.965	0	3	-89.673	0	1
	1029:1 DEAD +	1.000	652.114	0	3	-161.903	0	1
	1030:1 DEAD +	1.000	478.224	0	3	-123.261	0	1
	1031:1 DEAD +	1.000				-81.591	0.667	3
	1032:1 DEAD +	1.000	726.069	0	3	-188.155	0	1
	1033:1 DEAD +	1.000	26.487	0	3	-41.327	0	1
	1034:1 DEAD +	1.000	1.07E+3	0	3	-260.386	0	1
	1035:1 DEAD +	1.000	370.636	0	3	-113.557	0	1
	1036:1 DEAD +	1.000	561.845	0	3	-142.958	0	1
	1037:1 DEAD +	1.000	3.871	0	1	-137.736	0	3
	1038:0.6 DEAC	1.000	420.728	0	3	-105.471	0	1
	1039:0.6 DEAC	1.000	11.992	0	1	-138.937	0	3
	1040:0.6 DEAC	1.000	86.245	0	3	-26.685	0	1
162	1:DEAD	1.000	119.821	1.000	3			
	2:LIVE	1.000	168.765	1.000	3			
	3:SNOW	1.000	467.322	1.000	3			
	4:WIND+	1.000	389.012	1.000	3			
	5:WIND-	1.000				-302.225	1.000	1
	1003:1.4 DEAC	1.000	167.750	1.000	3			
	1004:1.2 DEAC	1.000	228.168	1.000	3			
	1005:1.2 DEAC	1.000	377.447	1.000	3			
	1006:1.2 DEAC	1.000	143.786	1.000	3			
	1007:1.2 DEAC	1.000	413.810	1.000	3			
	1008:1.2 DEAC	1.000	608.316	1.000	3			
	1009:1.2 DEAC	1.000	304.864	1.000	3			
	1010:1.2 DEAC	1.000	891.501	1.000	3			
	1011:1.2 DEAC	1.000	1.09E+3	1.000	3			
	1012:1.2 DEAC	1.000	782.556	1.000	3			
	1013:1.2 DEAC	1.000	338.292	1.000	3			
	1014:1.2 DEAC	1.000	34.840	1.000	3	-88.743	1.000	1
	1015:1.2 DEAC	1.000	617.180	1.000	3			
	1016:1.2 DEAC	1.000	10.278	1.000	3	-188.201	1.000	1
	1017:1.2 DEAC	1.000	766.459	1.000	3			
	1018:1.2 DEAC	1.000	159.556	1.000	3	-31.634	1.000	1
	1019:1.2 DEAC	1.000	532.798	1.000	3			
	1020:1.2 DEAC	1.000				-239.855	1.000	1
	1021:0.9 DEAC	1.000	496.851	1.000	3			
	1022:0.9 DEAC	1.000				-255.448	1.000	1
	1023:1.2 DEAC	1.000	237.250	1.000	3			
	1024:0.9 DEAC	1.000	107.839	1.000	3			
	1025:1 DEAD	1.000	119.821	1.000	3			
	1026:1 DEAD +	1.000	587.143	1.000	3			

CONNECTED User: Brett Eisenhauer

Job Title Learning Experience Sloping Awning

Part

Ref

By Date 03-Mar-23 Chd

Client Capitol Awning

File Sloped Awning 6ft Analys Date/Time 10-May-2023 14:41

Beam Combined Axial and Bending Stresses Summary Cont...

Beam	L/C	Length (in)	Max Comp			Max Tens		
			Stress (psi)	d (in)	Corner	Stress (psi)	d (in)	Corner
	1027:1 DEAD +	1.000	288.586	1.000	3			
	1028:1 DEAD +	1.000	246.395	1.000	3			
	1029:1 DEAD +	1.000	470.313	1.000	3			
	1030:1 DEAD +	1.000	353.229	1.000	3			
	1031:1 DEAD +	1.000				-129.360	1.000	1
	1032:1 DEAD +	1.000	538.154	1.000	3			
	1033:1 DEAD +	1.000	82.977	1.000	3	-97.213	1.000	1
	1034:1 DEAD +	1.000	762.072	1.000	3			
	1035:1 DEAD +	1.000	306.895	1.000	3			
	1036:1 DEAD +	1.000	411.580	1.000	3			
	1037:1 DEAD +	1.000				-174.694	1.000	1
	1038:0.6 DEAC	1.000	305.300	1.000	3			
	1039:0.6 DEAC	1.000				-150.150	1.000	1
	1040:0.6 DEAC	1.000	71.893	1.000	3			
163	1:DEAD	17.025	65.347	17.025	3			
	2:LIVE	17.025	97.617	17.025	3			
	3:SNOW	17.025	295.616	7.094	1			
	4:WIND+	17.025	242.831	17.025	3			
	5:WIND-	17.025				-185.120	0	1
	1003:1.4 DEAC	17.025	91.486	17.025	3			
	1004:1.2 DEAC	17.025	127.225	17.025	3			
	1005:1.2 DEAC	17.025	225.648	17.025	3			
	1006:1.2 DEAC	17.025	78.417	17.025	3			
	1007:1.2 DEAC	17.025	234.604	17.025	3			
	1008:1.2 DEAC	17.025	356.019	17.025	3			
	1009:1.2 DEAC	17.025	155.946	17.025	3			
	1010:1.2 DEAC	17.025	549.558	17.025	3			
	1011:1.2 DEAC	17.025	670.973	17.025	3			
	1012:1.2 DEAC	17.025	470.900	17.025	3			
	1013:1.2 DEAC	17.025	199.832	17.025	3			
	1014:1.2 DEAC	17.025				-39.754	17.025	1
	1015:1.2 DEAC	17.025	370.057	17.025	3			
	1016:1.2 DEAC	17.025				-93.273	17.025	1
	1017:1.2 DEAC	17.025	468.480	17.025	3			
	1018:1.2 DEAC	17.025	68.333	17.025	3			
	1019:1.2 DEAC	17.025	321.248	17.025	3			
	1020:1.2 DEAC	17.025				-131.163	17.025	1
	1021:0.9 DEAC	17.025	301.644	17.025	3			
	1022:0.9 DEAC	17.025				-144.077	17.025	1
	1023:1.2 DEAC	17.025	137.309	17.025	3			
	1024:0.9 DEAC	17.025	58.812	17.025	3			
	1025:1 DEAD	17.025	65.347	17.025	3			
	1026:1 DEAD +	17.025	359.810	17.025	3			
	1027:1 DEAD +	17.025	162.964	17.025	3			

CONNECTED User: Brett Eisenhauer

Job Title Learning Experience Sloping Awning

Part

Ref

By Date 03-Mar-23 Chd

Client Capitol Awning

File Sloped Awning 6ft Analys Date/Time 10-May-2023 14:41

Beam Combined Axial and Bending Stresses Summary Cont...

Beam	L/C	Length (in)	Max Comp			Max Tens		
			Stress (psi)	d (in)	Corner	Stress (psi)	d (in)	Corner
	1028:1 DEAD +	17.025	138.560	17.025	3			
	1029:1 DEAD +	17.025	286.195	17.025	3			
	1030:1 DEAD +	17.025	211.046	17.025	3			
	1031:1 DEAD +	17.025				-66.645	17.025	1
	1032:1 DEAD +	17.025	320.683	17.025	3			
	1033:1 DEAD +	17.025	20.574	17.025	3	-37.232	17.025	1
	1034:1 DEAD +	17.025	468.318	17.025	3			
	1035:1 DEAD +	17.025	168.208	17.025	3			
	1036:1 DEAD +	17.025	247.471	17.025	3			
	1037:1 DEAD +	17.025				-94.068	17.025	1
	1038:0.6 DEAC	17.025	184.907	17.025	3			
	1039:0.6 DEAC	17.025				-83.863	17.025	1
	1040:0.6 DEAC	17.025	39.208	17.025	3			
164	1:DEAD	1.000	69.014	1.000	3			
	2:LIVE	1.000	101.343	1.000	3			
	3:SNOW	1.000	298.551	1.000	3			
	4:WIND+	1.000	246.824	1.000	3			
	5:WIND-	1.000				-186.077	1.000	1
	1003:1.4 DEAC	1.000	96.620	1.000	3			
	1004:1.2 DEAC	1.000	133.489	1.000	3			
	1005:1.2 DEAC	1.000	232.092	1.000	3			
	1006:1.2 DEAC	1.000	82.817	1.000	3			
	1007:1.2 DEAC	1.000	244.966	1.000	3			
	1008:1.2 DEAC	1.000	368.378	1.000	3			
	1009:1.2 DEAC	1.000	167.938	1.000	3			
	1010:1.2 DEAC	1.000	560.498	1.000	3			
	1011:1.2 DEAC	1.000	683.910	1.000	3			
	1012:1.2 DEAC	1.000	483.470	1.000	3			
	1013:1.2 DEAC	1.000	206.229	1.000	3			
	1014:1.2 DEAC	1.000	5.789	1.000	3	-45.783	1.000	1
	1015:1.2 DEAC	1.000	380.313	1.000	3			
	1016:1.2 DEAC	1.000				-102.795	1.000	1
	1017:1.2 DEAC	1.000	478.917	1.000	3			
	1018:1.2 DEAC	1.000	78.036	1.000	3	-3.136	1.000	1
	1019:1.2 DEAC	1.000	329.641	1.000	3			
	1020:1.2 DEAC	1.000				-138.822	1.000	1
	1021:0.9 DEAC	1.000	308.937	1.000	3			
	1022:0.9 DEAC	1.000				-150.636	1.000	1
	1023:1.2 DEAC	1.000	142.527	1.000	3			
	1024:0.9 DEAC	1.000	62.113	1.000	3			
	1025:1 DEAD	1.000	69.014	1.000	3			
	1026:1 DEAD +	1.000	367.565	1.000	3			
	1027:1 DEAD +	1.000	170.357	1.000	3			
	1028:1 DEAD +	1.000	145.022	1.000	3			

CONNECTED User: Brett Eisenhauer

Job Title Learning Experience Sloping Awning

Part

Ref

By Date 03-Mar-23 Chd

Client Capitol Awning

File Sloped Awning 6ft Analys Date/Time 10-May-2023 14:41

Beam Combined Axial and Bending Stresses Summary Cont...

Beam	L/C	Length (in)	Max Comp			Max Tens		
			Stress (psi)	d (in)	Corner	Stress (psi)	d (in)	Corner
	1029:1 DEAD +	1.000	292.927	1.000	3			
	1030:1 DEAD +	1.000	217.109	1.000	3			
	1031:1 DEAD +	1.000				-72.267	1.000	1
	1032:1 DEAD +	1.000	330.140	1.000	3			
	1033:1 DEAD +	1.000	29.479	1.000	3	-46.138	1.000	1
	1034:1 DEAD +	1.000	478.045	1.000	3			
	1035:1 DEAD +	1.000	177.385	1.000	3			
	1036:1 DEAD +	1.000	254.132	1.000	3			
	1037:1 DEAD +	1.000				-100.179	1.000	1
	1038:0.6 DEAC	1.000	189.503	1.000	3			
	1039:0.6 DEAC	1.000				-88.019	1.000	1
	1040:0.6 DEAC	1.000	41.409	1.000	3			
165	1:DEAD	22.000	158.803	22.000	1	-59.537	22.000	3
	2:LIVE	22.000	257.700	22.000	1	-98.999	22.000	3
	3:SNOW	22.000	860.976	22.000	1	-339.717	22.000	3
	4:WIND+	22.000	702.740	22.000	1	-276.578	22.000	3
	5:WIND-	22.000	212.750	22.000	3	-523.591	22.000	1
	1003:1.4 DEAC	22.000	222.324	22.000	1	-83.352	22.000	3
	1004:1.2 DEAC	22.000	319.414	22.000	1	-120.944	22.000	3
	1005:1.2 DEAC	22.000	621.051	22.000	1	-241.303	22.000	3
	1006:1.2 DEAC	22.000	190.563	22.000	1	-71.445	22.000	3
	1007:1.2 DEAC	22.000	602.884	22.000	1	-229.843	22.000	3
	1008:1.2 DEAC	22.000	954.254	22.000	1	-368.132	22.000	3
	1009:1.2 DEAC	22.000	341.089	22.000	1	-123.468	22.000	3
	1010:1.2 DEAC	22.000	1.57E+3	22.000	1	-614.991	22.000	3
	1011:1.2 DEAC	22.000	1.92E+3	22.000	1	-753.280	22.000	3
	1012:1.2 DEAC	22.000	1.31E+3	22.000	1	-508.617	22.000	3
	1013:1.2 DEAC	22.000	541.933	22.000	1	-209.734	22.000	3
	1014:1.2 DEAC	22.000	34.930	22.000	3	-71.232	22.000	1
	1015:1.2 DEAC	22.000	1.02E+3	22.000	1	-397.522	22.000	3
	1016:1.2 DEAC	22.000	91.806	22.000	3	-204.178	22.000	1
	1017:1.2 DEAC	22.000	1.32E+3	22.000	1	-517.881	22.000	3
	1018:1.2 DEAC	22.000	117.760	0	3	-48.852	0	1
	1019:1.2 DEAC	22.000	893.303	22.000	1	-348.022	22.000	3
	1020:1.2 DEAC	22.000	141.305	22.000	3	-333.028	22.000	1
	1021:0.9 DEAC	22.000	845.662	22.000	1	-330.161	22.000	3
	1022:0.9 DEAC	22.000	159.166	22.000	3	-380.669	22.000	1
	1023:1.2 DEAC	22.000	362.759	22.000	1	-139.388	22.000	3
	1024:0.9 DEAC	22.000	142.923	22.000	1	-53.584	22.000	3
	1025:1 DEAD	22.000	158.803	22.000	1	-59.537	22.000	3
	1026:1 DEAD +	22.000	1.02E+3	22.000	1	-399.254	22.000	3
	1027:1 DEAD +	22.000	416.503	22.000	1	-158.536	22.000	3
	1028:1 DEAD +	22.000	352.078	22.000	1	-133.787	22.000	3
	1029:1 DEAD +	22.000	804.535	22.000	1	-314.325	22.000	3

Bentley Axis11 CONNECTED User: Brett Eisenhauer Job Title Learning Experience Sloping Awning Client Capitol Awning	Job No 23-0005	Sheet No 38	Rev
	Part		
Ref		By	
Date 03-Mar-23		Chd	
File Sloped Awning 6ft Analys		Date/Time 10-May-2023 14:41	

Beam Combined Axial and Bending Stresses Summary Cont...

Beam	L/C	Length (in)	Max Comp			Max Tens		
			Stress (psi)	d (in)	Corner	Stress (psi)	d (in)	Corner
	1030:1 DEAD +	22.000	580.447	22.000	1	-225.484	22.000	3
	1031:1 DEAD +	22.000	68.113	22.000	3	-155.352	22.000	1
	1032:1 DEAD +	22.000	879.133	22.000	1	-341.220	22.000	3
	1033:1 DEAD +	22.000	25.776	22.000	3	-40.615	22.000	1
	1034:1 DEAD +	22.000	1.33E+3	22.000	1	-521.758	22.000	3
	1035:1 DEAD +	22.000	411.842	22.000	1	-154.762	22.000	3
	1036:1 DEAD +	22.000	685.858	22.000	1	-266.971	22.000	3
	1037:1 DEAD +	22.000	100.025	22.000	3	-233.891	22.000	1
	1038:0.6 DEAC	22.000	516.926	22.000	1	-201.669	22.000	3
	1039:0.6 DEAC	22.000	91.928	22.000	3	-218.873	22.000	1
	1040:0.6 DEAC	22.000	95.282	22.000	1	-35.722	22.000	3

Utilization Ratio

Beam	Analysis Property	Design Property	Actual Ratio	Allowable Ratio	Ratio (Act./Allow.)	Clause	L/C	Ax (in ²)	Iz (in ⁴)	Iy (in ⁴)	Ix (in ⁴)
6	1.000SQX	1.000SQX	0.109	1.000	0.109			0.438	0.057	0.057	0.084
36	1.000SQX	1.000SQX	0	1.000	0			0.438	0.057	0.057	0.084
123	1.000SQX	1.000SQX	0.160	1.000	0.160			0.438	0.057	0.057	0.084
126	1.000SQX	1.000SQX	0.061	1.000	0.061			0.438	0.057	0.057	0.084
127	1.000SQX	1.000SQX	0	1.000	0			0.438	0.057	0.057	0.084
130	1.000SQX	1.000SQX	0.169	1.000	0.169			0.438	0.057	0.057	0.084
132	1.000SQX	1.000SQX	0.000	1.000	0.000			0.438	0.057	0.057	0.084
139	1.000SQX	1.000SQX	0.305	1.000	0.305			0.438	0.057	0.057	0.084
140	1.000SQX	1.000SQX	0	1.000	0			0.438	0.057	0.057	0.084
141	1.000SQX	1.000SQX	0.170	1.000	0.170			0.438	0.057	0.057	0.084
142	1.000SQX	1.000SQX	0	1.000	0			0.438	0.057	0.057	0.084
143	1.000SQX	1.000SQX	0.319	1.000	0.319			0.438	0.057	0.057	0.084
144	1.000SQX	1.000SQX	0.126	1.000	0.126			0.438	0.057	0.057	0.084
145	1.000SQX	1.000SQX	0.451	1.000	0.451			0.438	0.057	0.057	0.084
146	1.000SQX	1.000SQX	0.517	1.000	0.517			0.438	0.057	0.057	0.084
147	1.000SQX	1.000SQX	0	1.000	0			0.438	0.057	0.057	0.084
148	1.000SQX	1.000SQX	0.506	1.000	0.506			0.438	0.057	0.057	0.084
149	1.000SQX	1.000SQX	0	1.000	0			0.438	0.057	0.057	0.084
150	1.000SQX	1.000SQX	0.207	1.000	0.207			0.438	0.057	0.057	0.084
151	1.000SQX	1.000SQX	0	1.000	0			0.438	0.057	0.057	0.084
152	1.000SQX	1.000SQX	0.342	1.000	0.342			0.438	0.057	0.057	0.084
153	1.000SQX	1.000SQX	0	1.000	0			0.438	0.057	0.057	0.084
154	1.000SQX	1.000SQX	0.309	1.000	0.309			0.438	0.057	0.057	0.084
155	1.000SQX	1.000SQX	0	1.000	0			0.438	0.057	0.057	0.084
156	1.000SQX	1.000SQX	0.148	1.000	0.148			0.438	0.057	0.057	0.084
157	1.000SQX	1.000SQX	0.155	1.000	0.155			0.438	0.057	0.057	0.084
158	1.000SQX	1.000SQX	0.158	1.000	0.158			0.438	0.057	0.057	0.084
160	1.000SQX	1.000SQX	0.059	1.000	0.059			0.438	0.057	0.057	0.084

CONNECTED User: Brett Eisenhauer

Part

Job Title Learning Experience Sloping Awning

Ref

By Date 03-Mar-23 Chd

Client Capitol Awning

File Sloped Awning 6ft Analys Date/Time 10-May-2023 14:41

Utilization Ratio Cont...

Beam	Analysis Property	Design Property	Actual Ratio	Allowable Ratio	Ratio (Act./Allow.)	Clause	L/C	Ax (in ²)	Iz (in ⁴)	Iy (in ⁴)	Ix (in ⁴)
161	1.000SQX	1.000SQX	0.131	1.000	0.131			0.438	0.057	0.057	0.084
162	1.000SQX	1.000SQX	0.097	1.000	0.097			0.438	0.057	0.057	0.084
163	1.000SQX	1.000SQX	0	1.000	0			0.438	0.057	0.057	0.084
164	1.000SQX	1.000SQX	0.061	1.000	0.061			0.438	0.057	0.057	0.084
165	1.000SQX	1.000SQX	0	1.000	0			0.438	0.057	0.057	0.084

Failed Members

There is no data of this type.

Statics Check Results

L/C		FX (kip)	FY (kip)	FZ (kip)	MX (kip ft)	MY (kip ft)	MZ (kip ft)
1:DEAD	Loads	0	-0.067	-0.000	0.198	0	0
1:DEAD	Reactions	0	0.067	0.000	-0.198	0	0
	Difference	0	-0.000	0.000	0.000	0	0
2:LIVE	Loads	0	-0.103	-0.000	0.308	0	0
2:LIVE	Reactions	0	0.103	0.000	-0.308	0	0
	Difference	0	-0.000	-0.000	0.000	0	0
3:SNOW	Loads	0	-0.323	-0.000	0.982	0	0
3:SNOW	Reactions	0	0.323	0.000	-0.982	0	0
	Difference	0	-0.000	0.000	0.000	0	0
4:WIND+	Loads	0	-0.265	-0.000	0.806	0	0
4:WIND+	Reactions	0	0.265	0.000	-0.806	0	0
	Difference	0	-0.000	0.000	0.000	0	0
5:WIND-	Loads	0	0.181	-0.000	-0.565	0	0
5:WIND-	Reactions	0	-0.181	0.000	0.565	0	0
	Difference	0	0.000	-0.000	-0.000	0	0