



Problem: Using Bing Maps, the following error is produced: Internet Connection exception (device : HTTP connection, error code : 6) - [22])

Solution: Create a new Bing Maps key using Bing Maps Portal and assign the new key value to the configuration variable "MS_RASTER_BINGMAP_KEY" in the MicroStation Workspace Configuration variable settings.

Bing maps | Dev Center

My account ▾ Data sources ▾ Announcements Contacts & Info Sign out

My keys

[Click here to create a new key.](#)
[Click here to download complete list of keys.](#)

View Specific Key:

Application name	Key details	
Bentley Map	Key: Ap1hzTx7euAXV7lUneymw3XzK ... Application Uri: Key type: Basic / Dev/Test Created date: 10/15/2015 Expiration date: None Key Status: Enabled	Update Copy key Usage Report
MicroStation	Key: AhcBLbSyRkqCsxe8yFgnQ8B027WWa0ga0ExeZqDm46u4c8Cw9DwQePGMHsYKlKJ Application Uri: Key type: Basic / Dev/Test Created date: 05/11/2015 Expiration date: 08/09/2015 Key Status: Expired	Update Copy key Usage Report
Bing Maps	Key: As3eJoXXzy8L1UeqWqOnn_kBH0N7YmReyxvKlgK1czS0xbnCGCuw6qsYHheKPSRy Application Uri: Key type: Trial / Public website Created date: 10/24/2014 Expiration date: 01/22/2015 Key Status: Expired	Update Copy key Usage Report

© 2018 - Microsoft Corporation. All rights reserved

New Configuration Variable

Variable:

New Value:

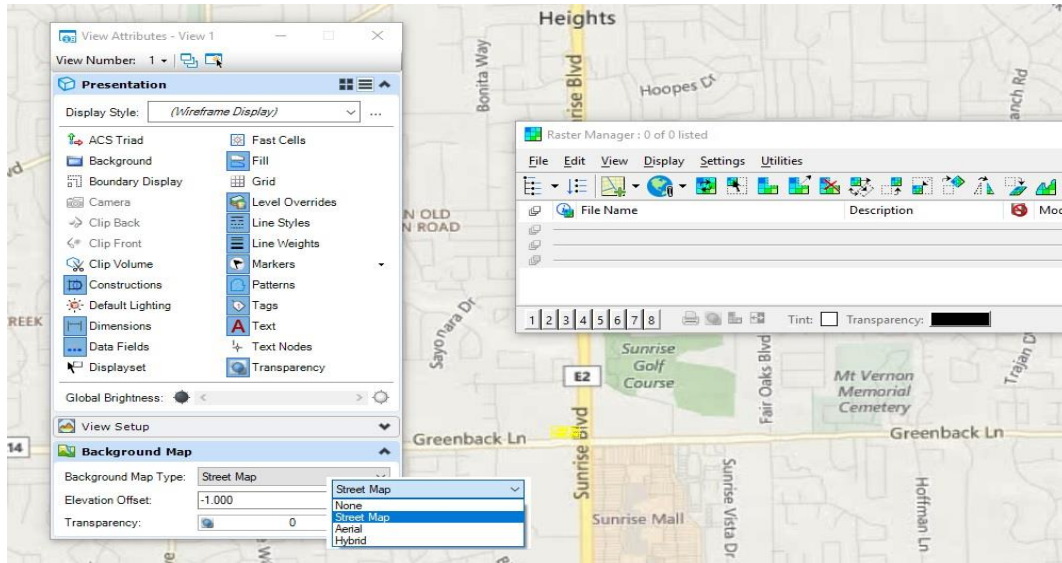
Expansion:

Bentley Map

GIS for the Engineering Professional



Beginning with the MicroStation CONNECT Edition, Update 7 Bing Maps are available as a Background image, which does not require a Bing Maps key.



Once the User Configuration File has been updated, exit the file and reinitialize it to test the new Bing Maps key.