

# OPENROADS SIGNCAD INTEGRATION FOR V8i

The following MDL installation and configuration guidelines are applicable to Bentley Civil V8i versions.

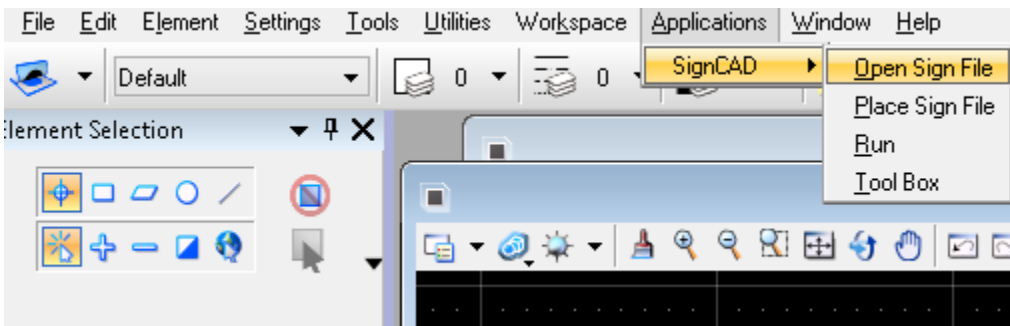
## CONFIGURATION FILE SETUP

Copy the "V8i SignCAD.cfg" file found in the directory the software was installed into (Example: C:\OpenRoads SignCAD\Ustn) and paste it into the Bentley product appl folder.

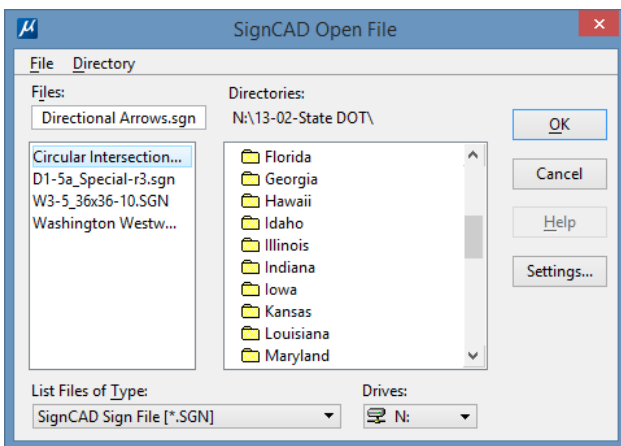
Example path: C:\Program Files (x86)\Bentley\PowerGEOPAK V8i (SELECTSeries)\PowerGEOPAK\config\appl

## INSTRUCTIONS FOR USING THE SIGNCAD MENU

In Bentley V8i Products the SignCAD Menu is available under Applications > SignCAD.



To "Open" or "Place" an OpenRoads SignCAD file, browse to the file location and select the file. Click on the Settings button to define parameters.



To copy/paste a file from OpenRoads SignCAD into MicroStation CONNECT or OpenRoads Designer, select the sign in OpenRoads SignCAD (from the Open Roads SignCAD menu: Tools > Select then window select the sign, Edit > Copy), then from the integrated SignCAD menu select the tool "Paste SignCAD File".

SignCAD File Open Settings

Rotation Angle: 0

Geometry Scale: 1.00

Master Units: inch

Geometry Level: 64

Dimension Level: 64

☒ Include dimensions

☒ Color fill

Dimension Sizing:

☒ Use SignCAD size

☐ Specify drawing scale

Drawing scale: 1.00

☐ Specify final text size

Final text size: 5.00

Dimension Text Font:

highway signcad plus

OK Cancel

Note: These new file settings will be saved and applied to future SignCAD files.

