



# OpenPlant CONNECT Edition



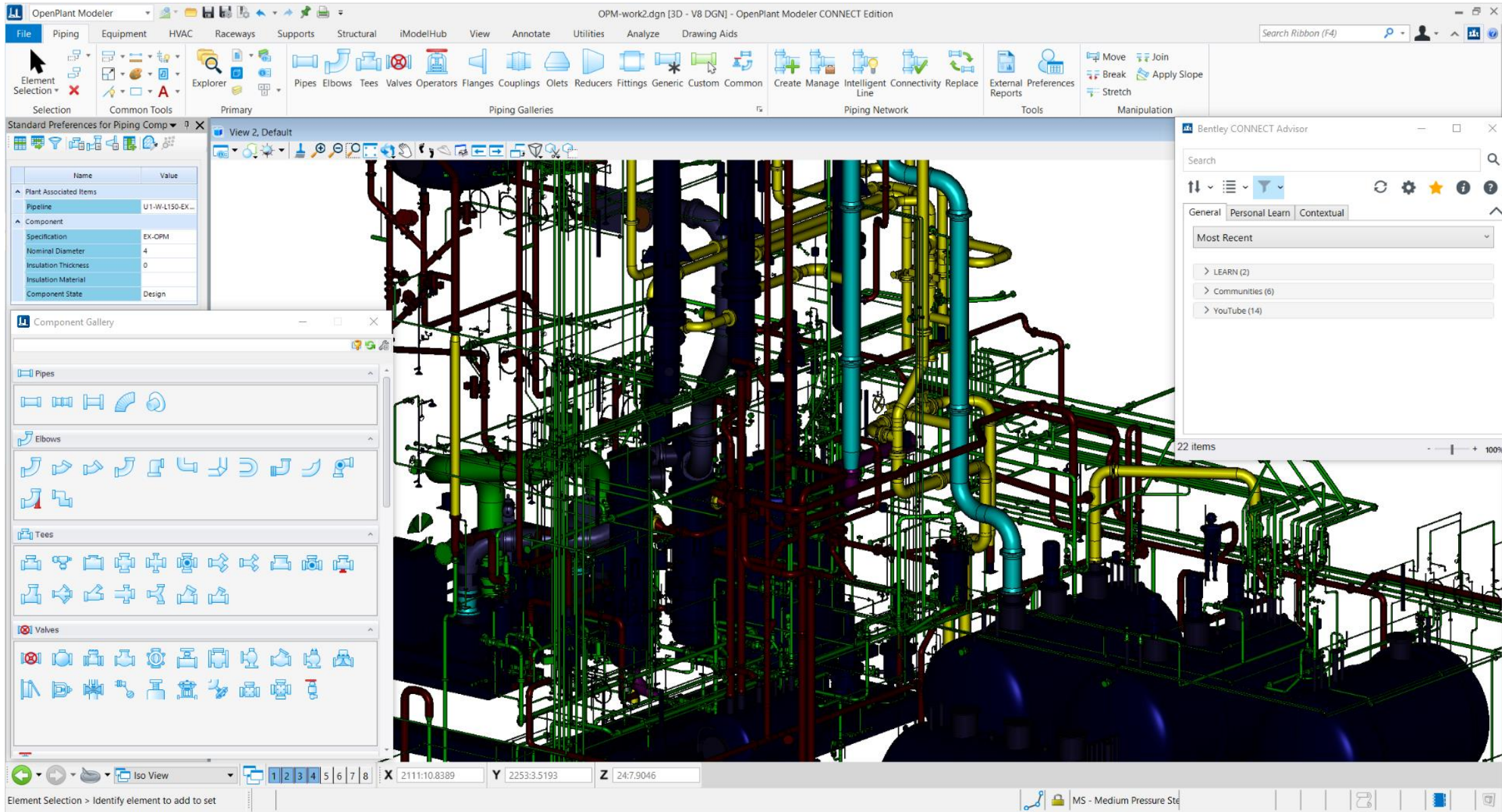
# OpenPlant CONNECT Edition 亮点

1. 全新简约用户界面
2. 增强的性能
3. 统一工作环境
4. Imodel 2.0

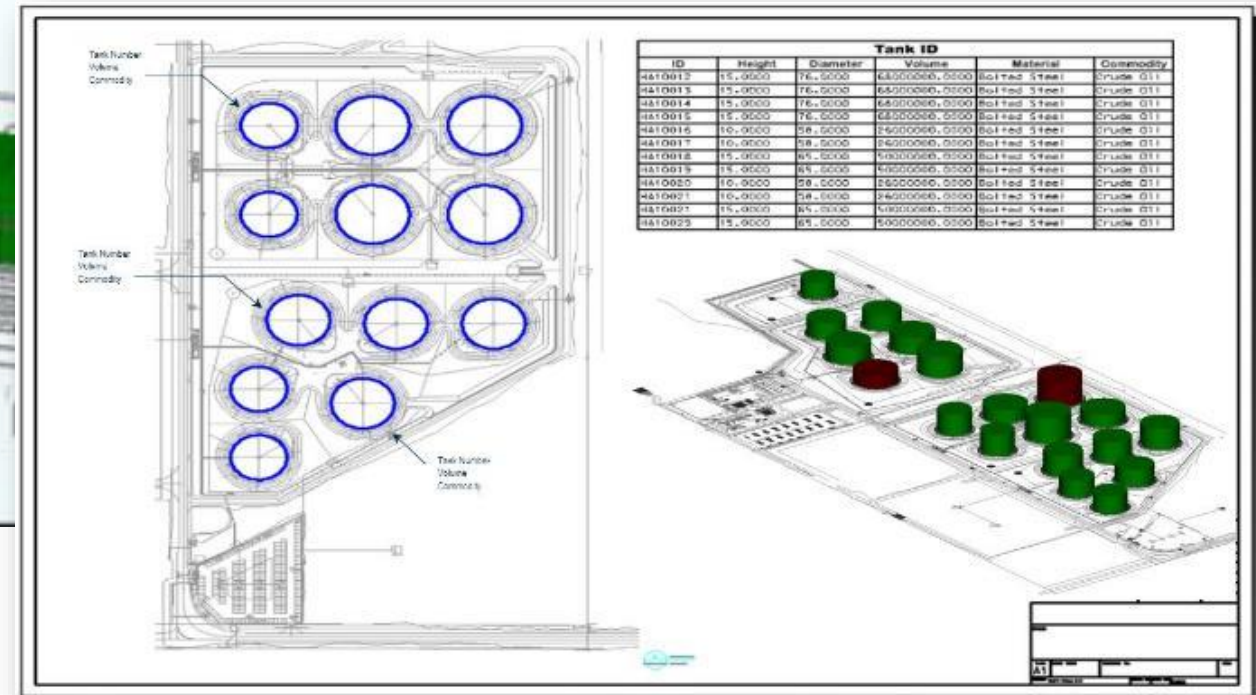
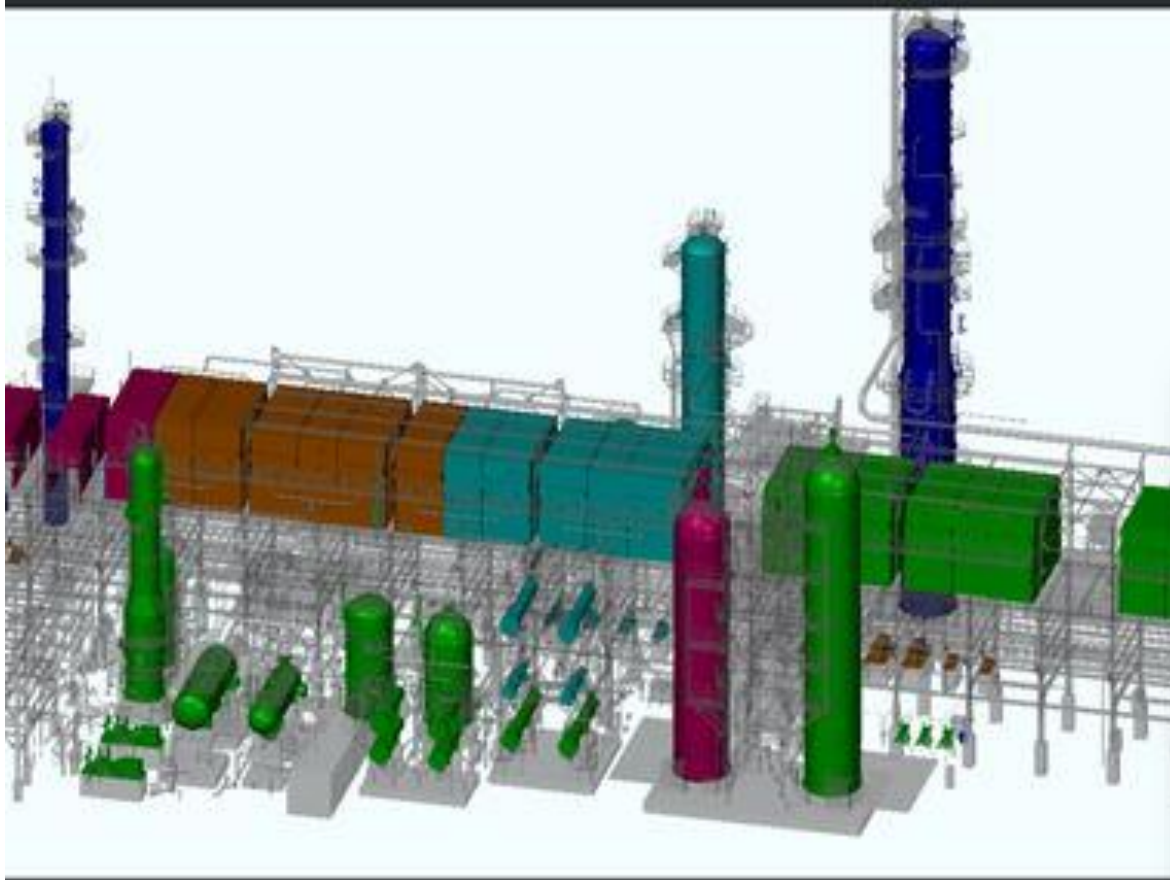
# OpenPlant CONNECT Edition 产品线

- Plant
  - OpenPlant CONNECT Edition 系列
    - OpenPlant Modeler
    - OpenPlant PID
    - OpenPlant Support Engineering
    - OpenPlant Isometrics Manager
    - OpenPlant Orthographics Manager
    - OpenPlant Project Administrator

# 全新简约用户界面



# OpenPlant CONNECT Edition 增强性能

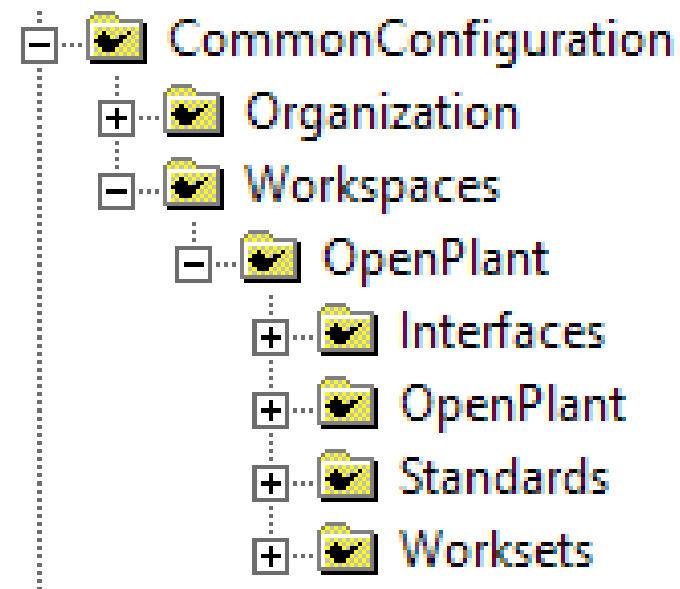




# OpenPlant CONNECT Edition

## 统一工作环境

- 所有 OpenPlant 系列使用统一的工作环境 – 无需重复配置
- 所有配置都放在 MicroStation Workset

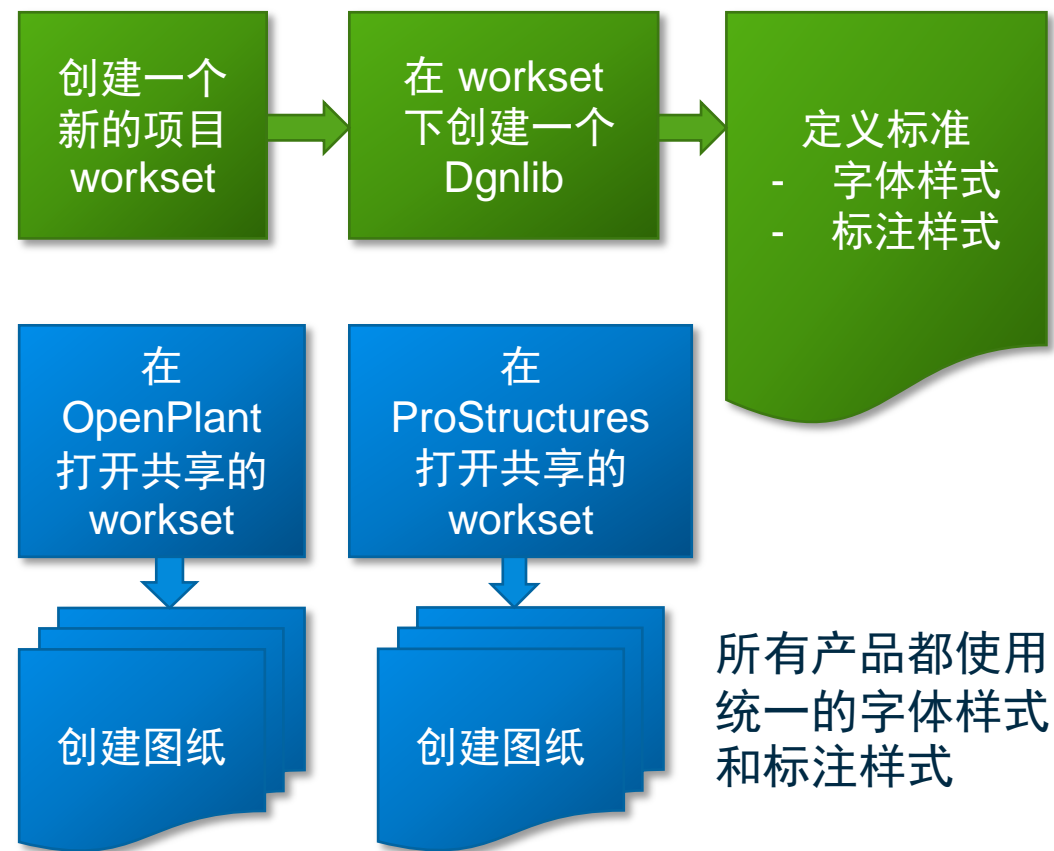


# OpenPlant CONNECT Edition

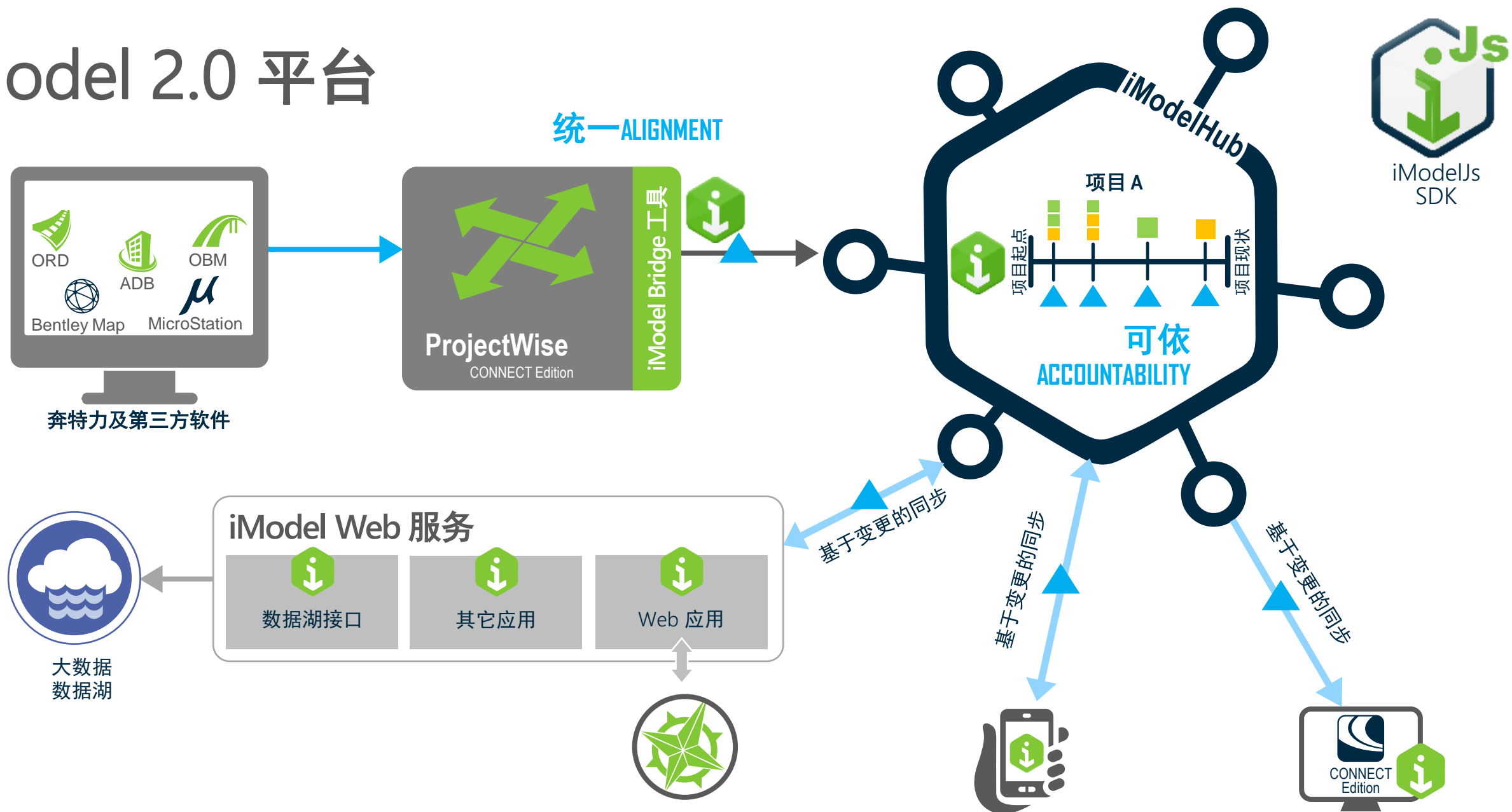
## 统一工作环境

- 使用 Worksets 在不同产品间定义统一的图层，字体，和样式
- 好处举例
  - 在不同的Bentley应用程序间实施跨专业的通用标准，增加协作性
  - 提高业主和EPC之间的数据一致性和标准遵从性

### • 工作流程举例



# iModel 2.0 平台





# OpenPlant CONNECT Edition 重大变化

- iModelHub 高效集成将取代
  - Data Manager
    - 通过 Web Data Services 功能取代 Bentley Data Manager.
  - OpenPlant ModelServer
    - 通过iModelHub 同步 OpenPlant PID, OpenPlant Modeler 和 OpenPlant Support Engineering 数据.



# OpenPlant CONNECT Edition

OpenPlant Modeler CONNECT Edition

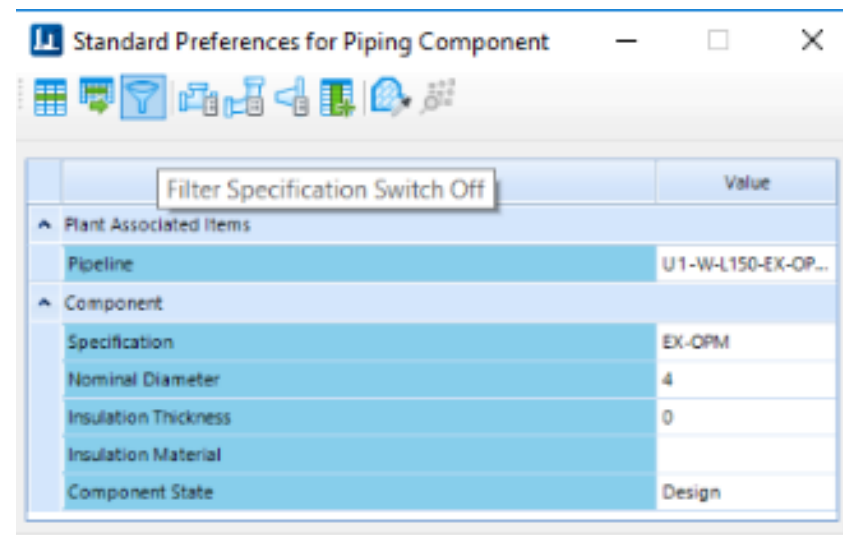


# 等级库过滤 & 元件工具面板

- Spec 过滤

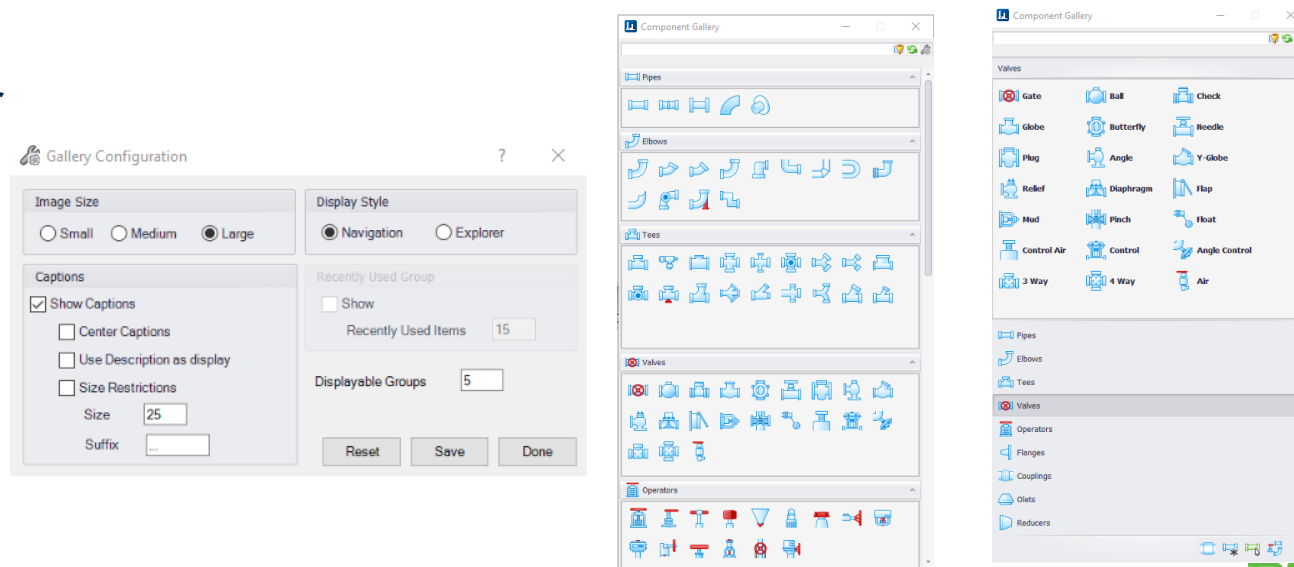
- 增加等级过滤开关

- 根据当前等级内容过滤按钮显示



- 元件工具面板

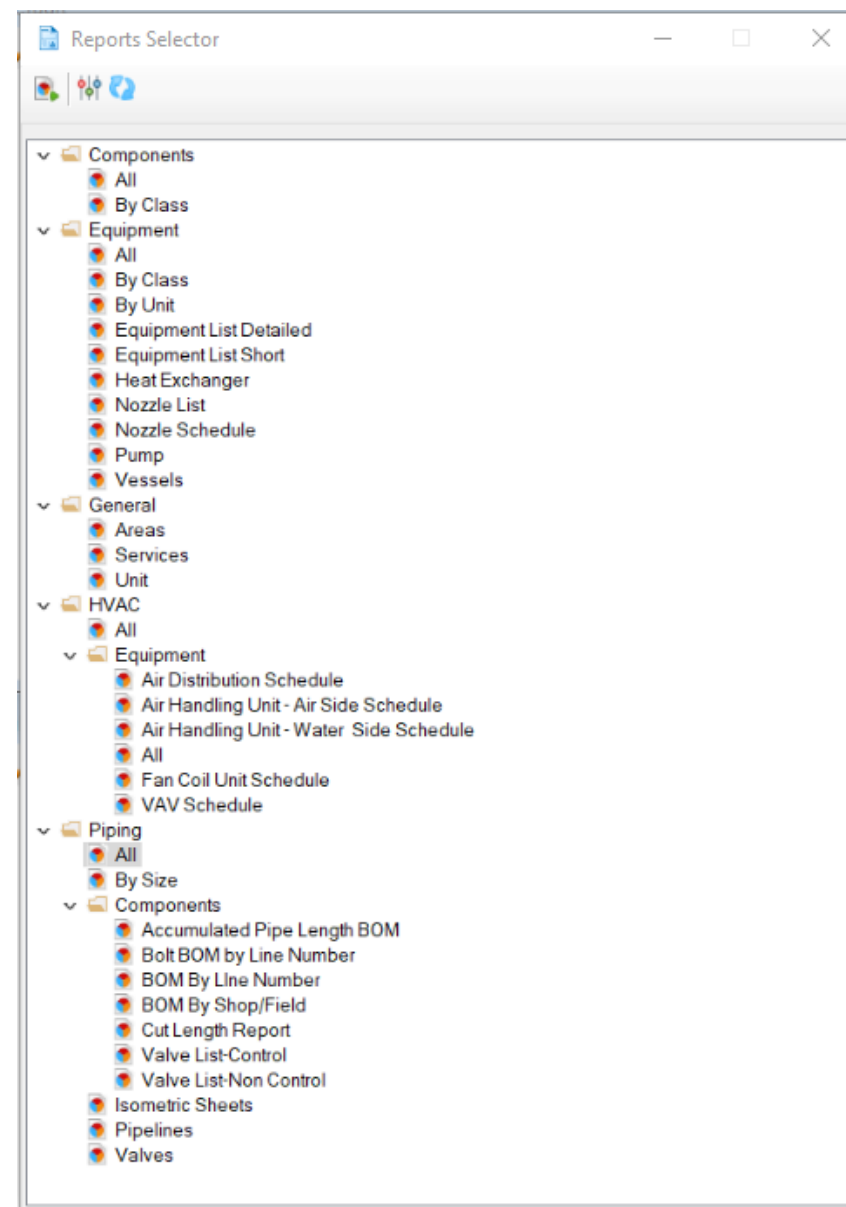
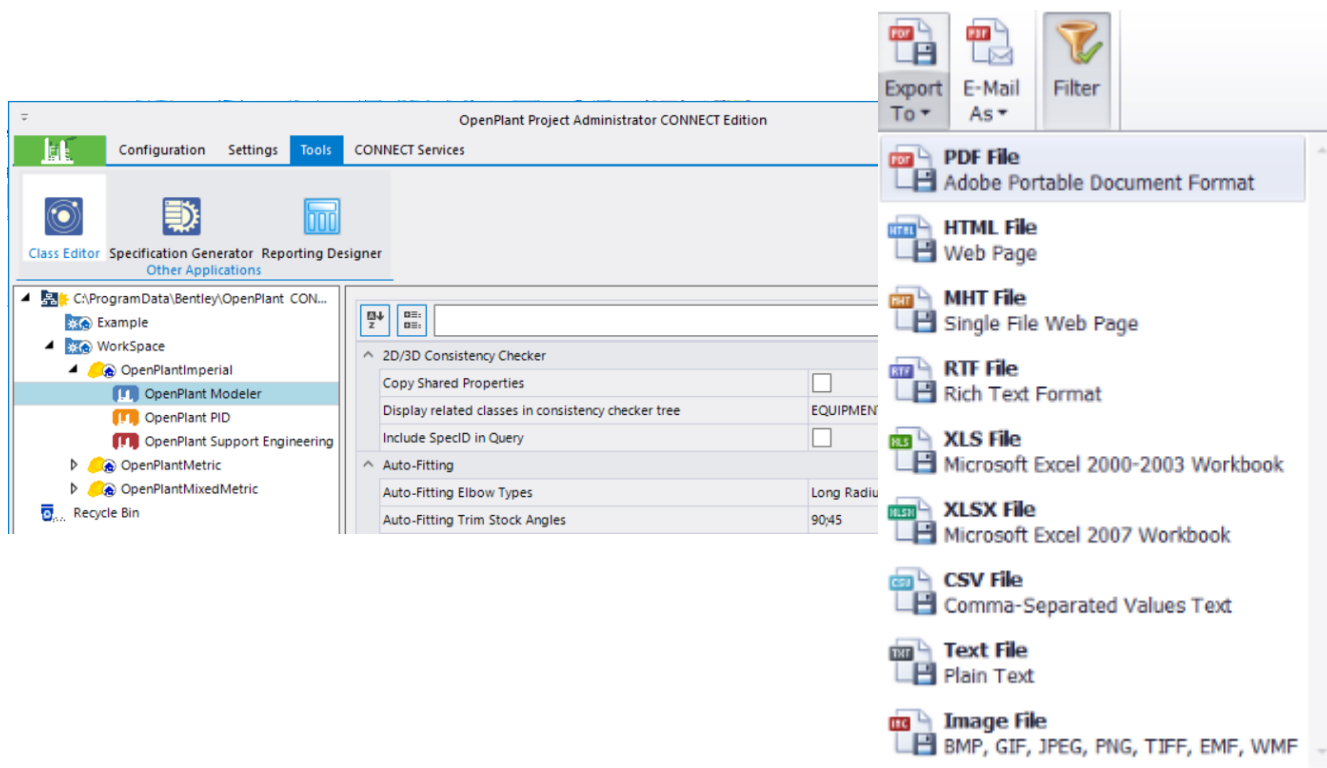
- 所有 OpenPlant 产品统一风格
    - 更直观
    - 自定义更方便

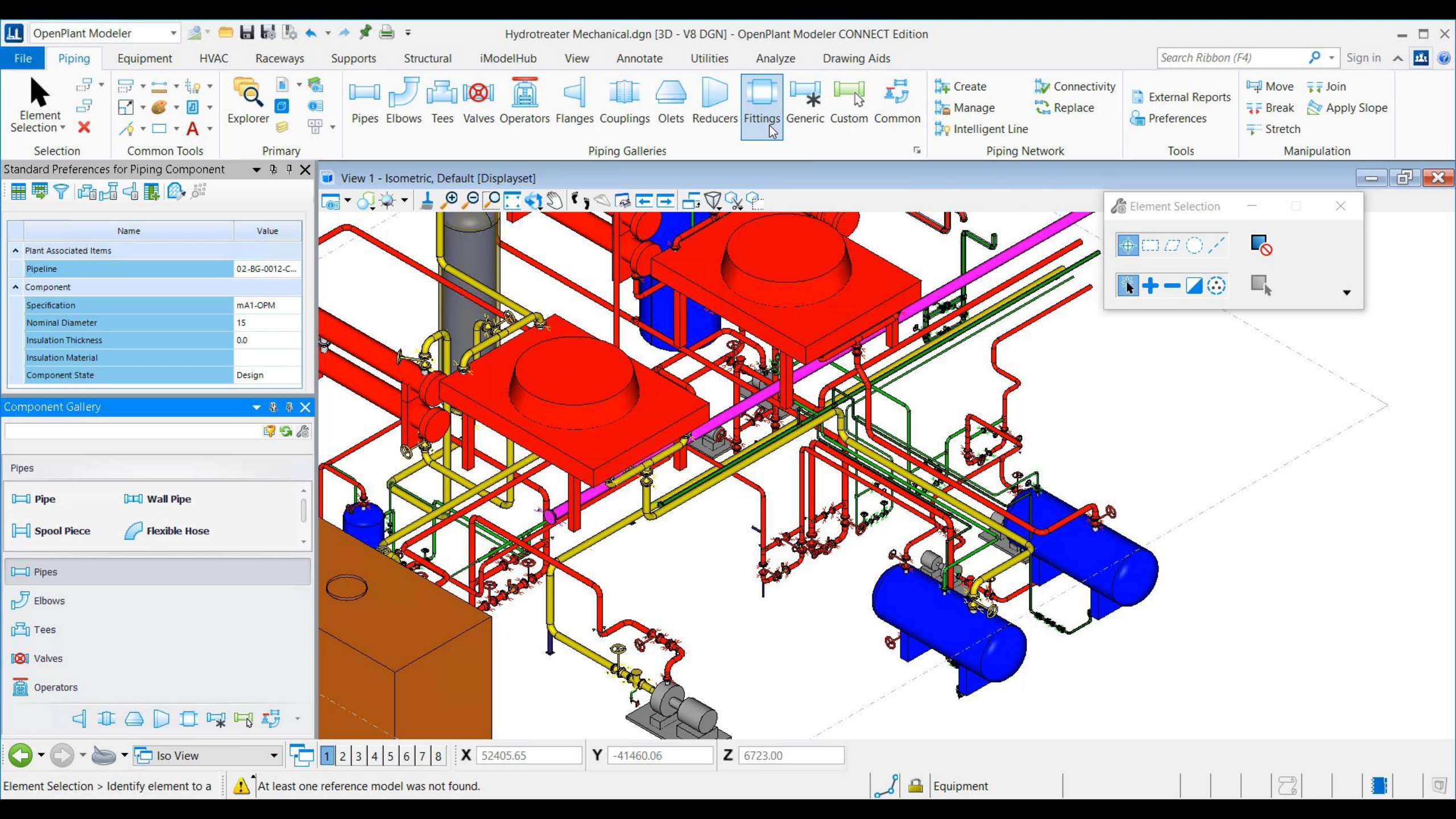




# 报表

- 基于Dev Express reports的全新报表引擎
- 可以通过新的 OPPA 管理定制

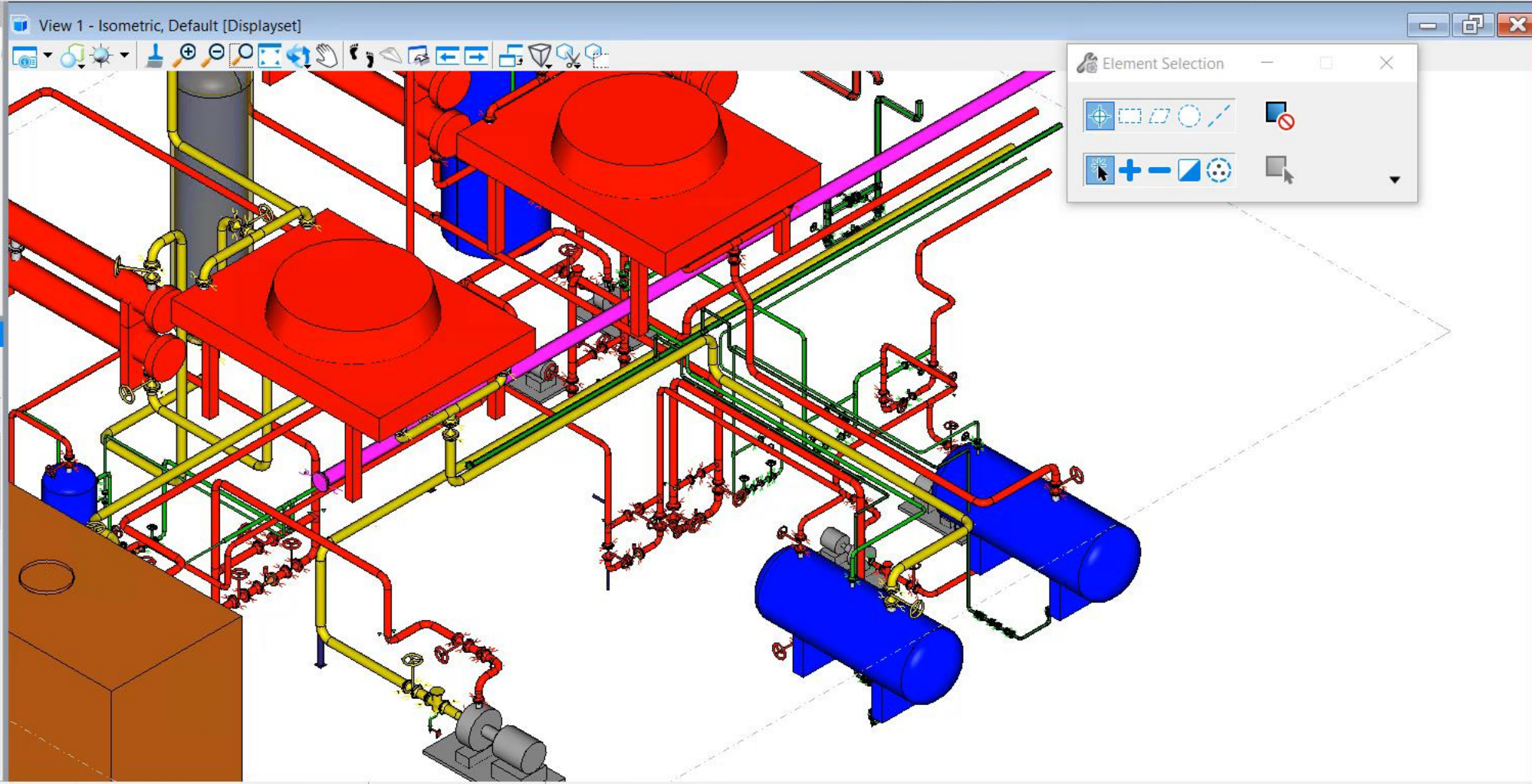


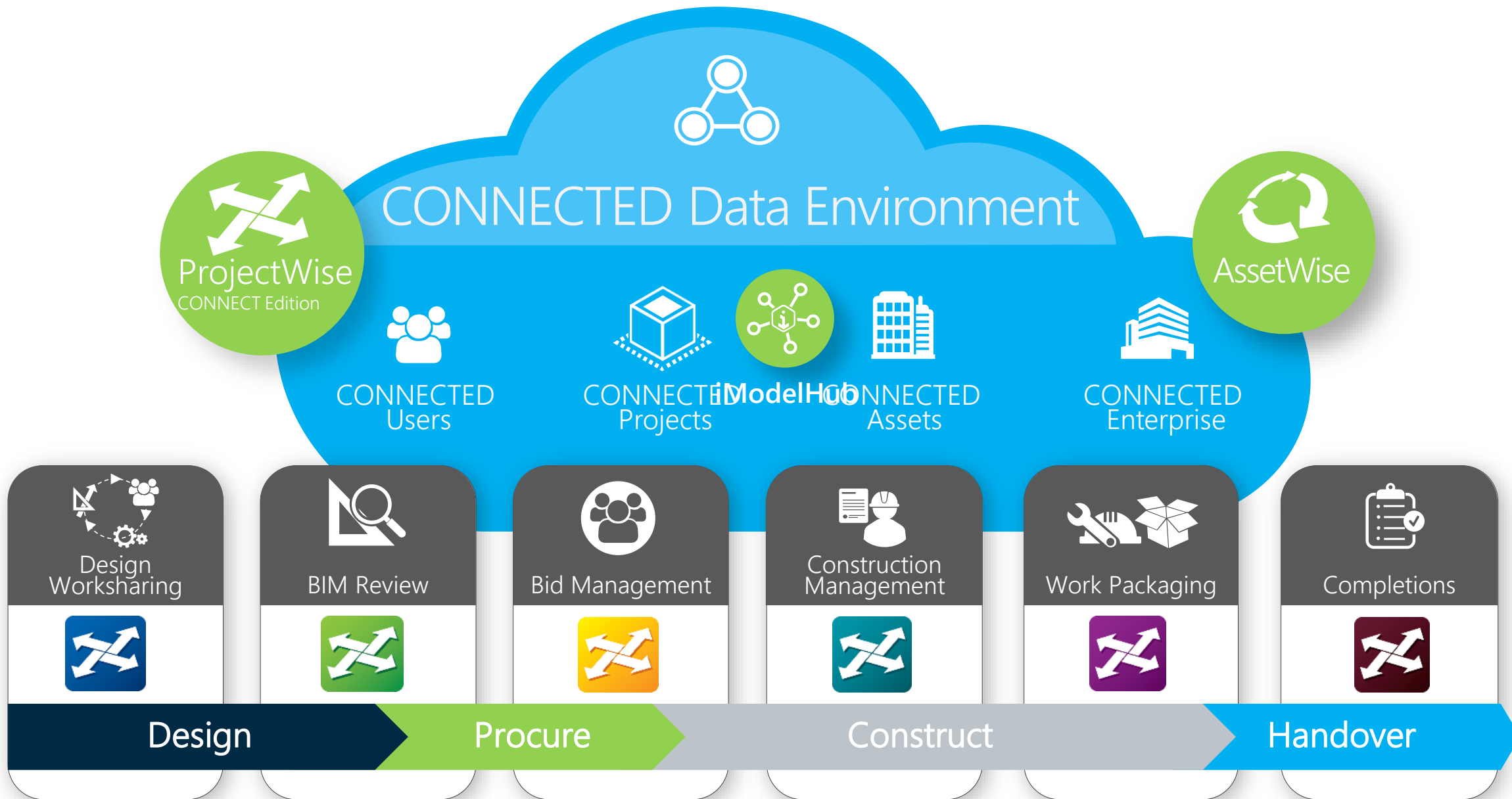


Standard Preferences for Piping Component

Name	Value
Plant Associated Items	
Pipeline	02-BG-0012-C...
Component	
Specification	mA1-OPM
Nominal Diameter	15
Insulation Thickness	0.0
Insulation Material	
Component State	Design

- Component Gallery
- Pipes
- Pipe Wall Pipe
  - Spool Piece Flexible Hose
- Pipes
- Elbows
  - Tees
  - Valves
  - Operators







Recent WorkSets

WorkSpace  
OpenPlant Demo


WorkSpace  
OpenPlantImperial

WorkSpace  
OpenPlantMetric

OpenPlant Modeler CONNECT Edition


WorkSpace ▾ OpenPlant Demo ▾


Recent Files




OpenPlant CE Demo.dgn


C:\ProgramData\Bentley\OpenPlant CONNECT Edition\Configuration\Workspaces\WorkSpace\Work...

Model:  Default ▾ Modified: 6/6/2018 11:45:36 PM Size: 73 KB





Browse



New File

Properties ▾

Name	OpenPlant Demo
Description	Demo Project
WorkSpace	WorkSpace

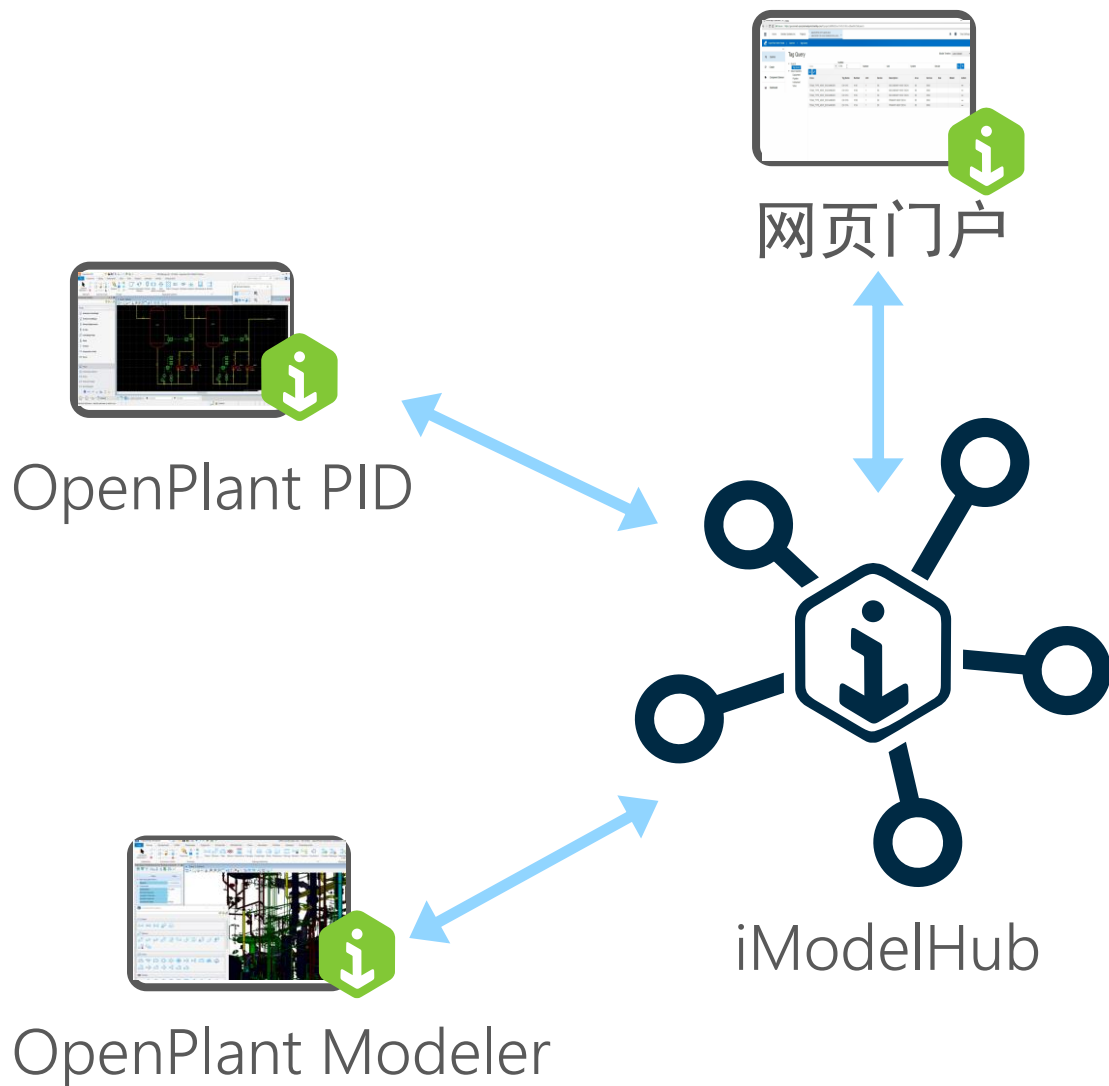
CONNECTED Project Properties

Number	06062018
Name	OpenPlant CE Demo
Asset Industry	Oil and Gas
Asset Type	Other
Location	USA
Status	Active

[Project Portal](#)

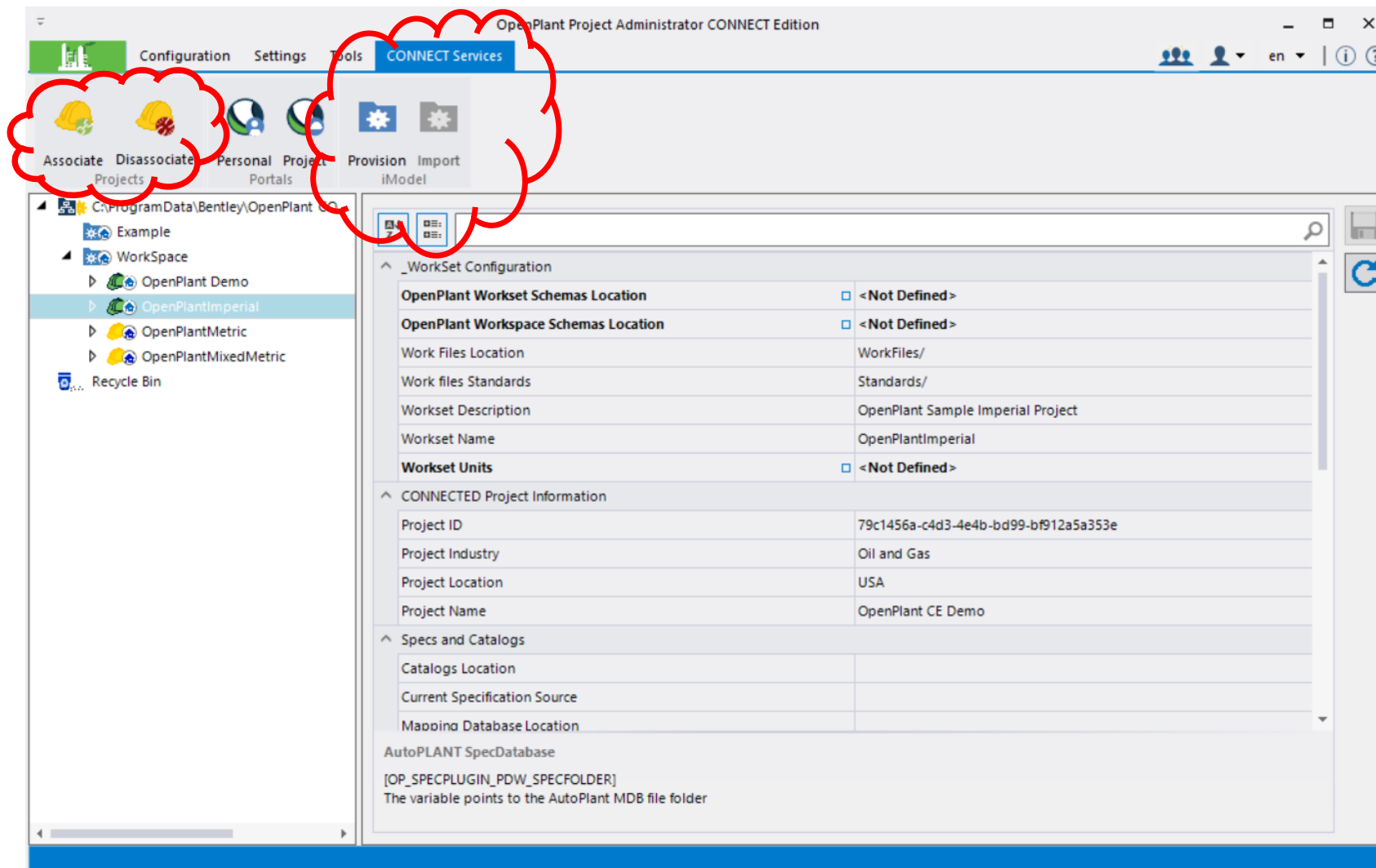
[Show All Properties](#)

# OpenPlant Modeler CE Update – 一致性检查



- 创建/编辑Tag标签
  - 通过网页门户
  - 通过PID
  - 通过OpenPlant Modeler
- 一致性浏览器会显示:
  - tag 存在, 但PID和OPM都没有
  - PID 存在但OPM 没有
  - PID 和 OPM 都有, 但是数据不同
  - 所有数据一致
- 还可以:
  - 从浏览器放置元件
  - 浏览tags
  - 生成报告
  - 高亮差异

# OpenPlant CONNECT Edition – 管理员工具



- iModelHub配置步骤:
  - 注册 CONNECTED 项目
  - 添加团队成员
  - 创建 iModel
  - 关联 CONNECTED 项目
  - 初始化 iModel

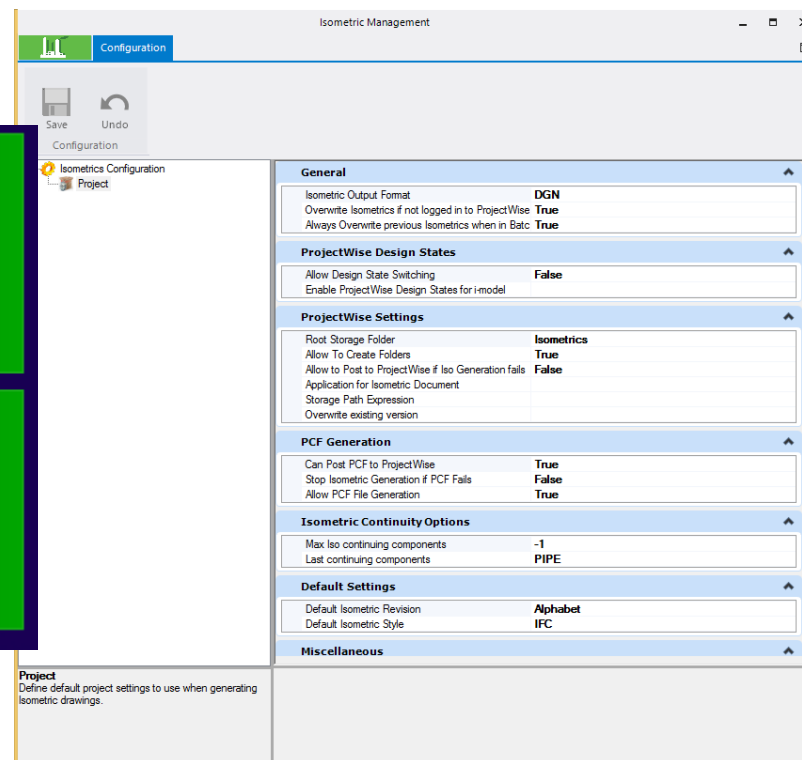
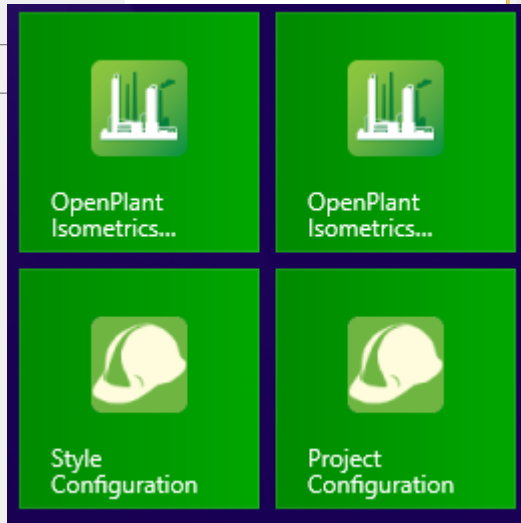
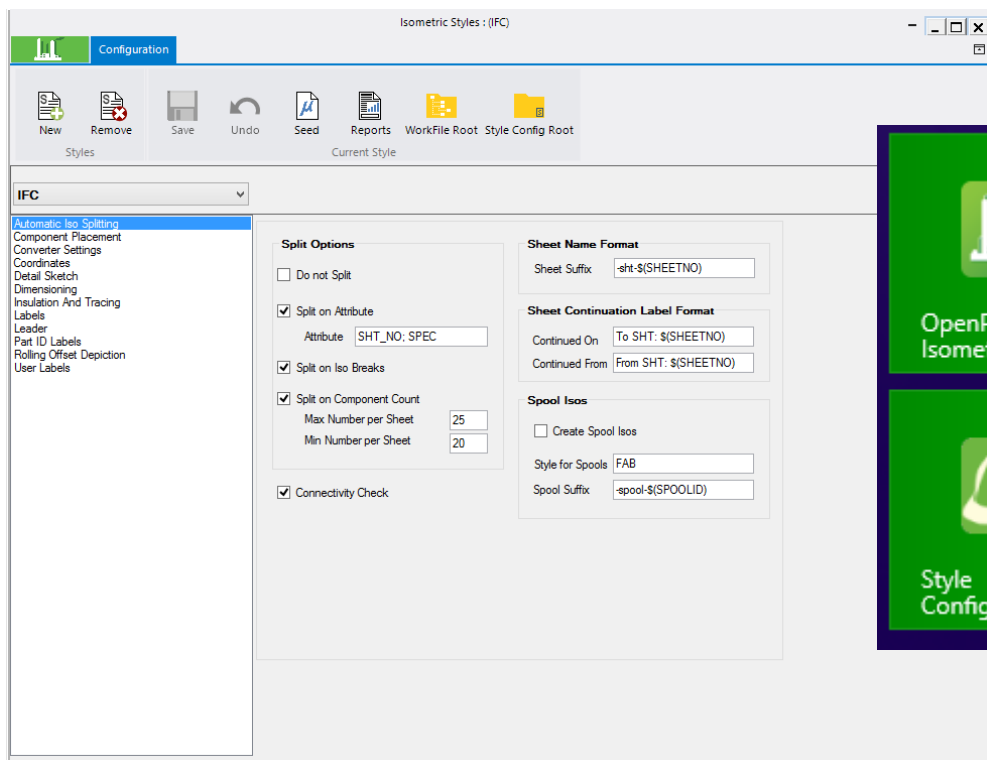




# OpenPlant CONNECT Edition

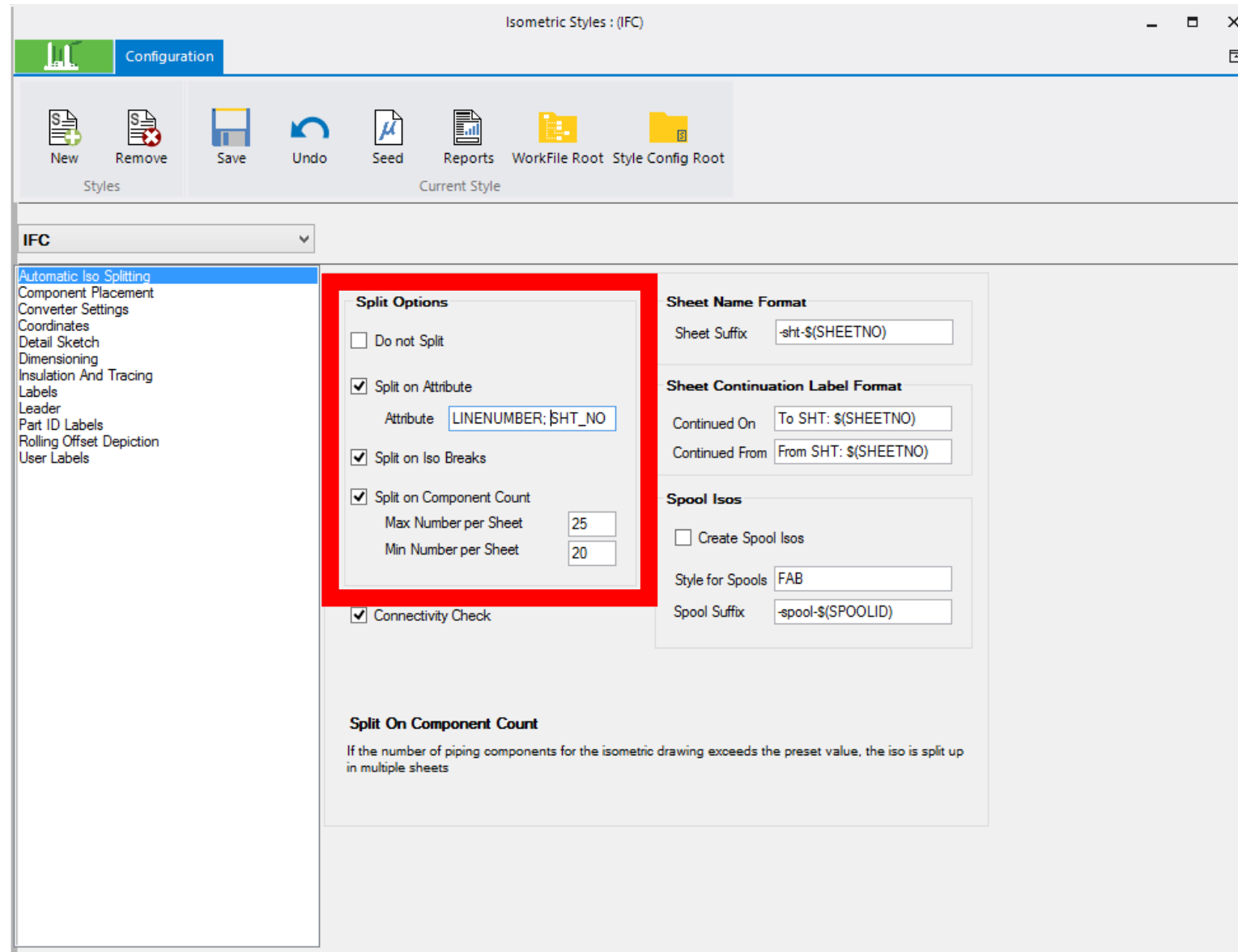
OpenPlant Isometrics Manager





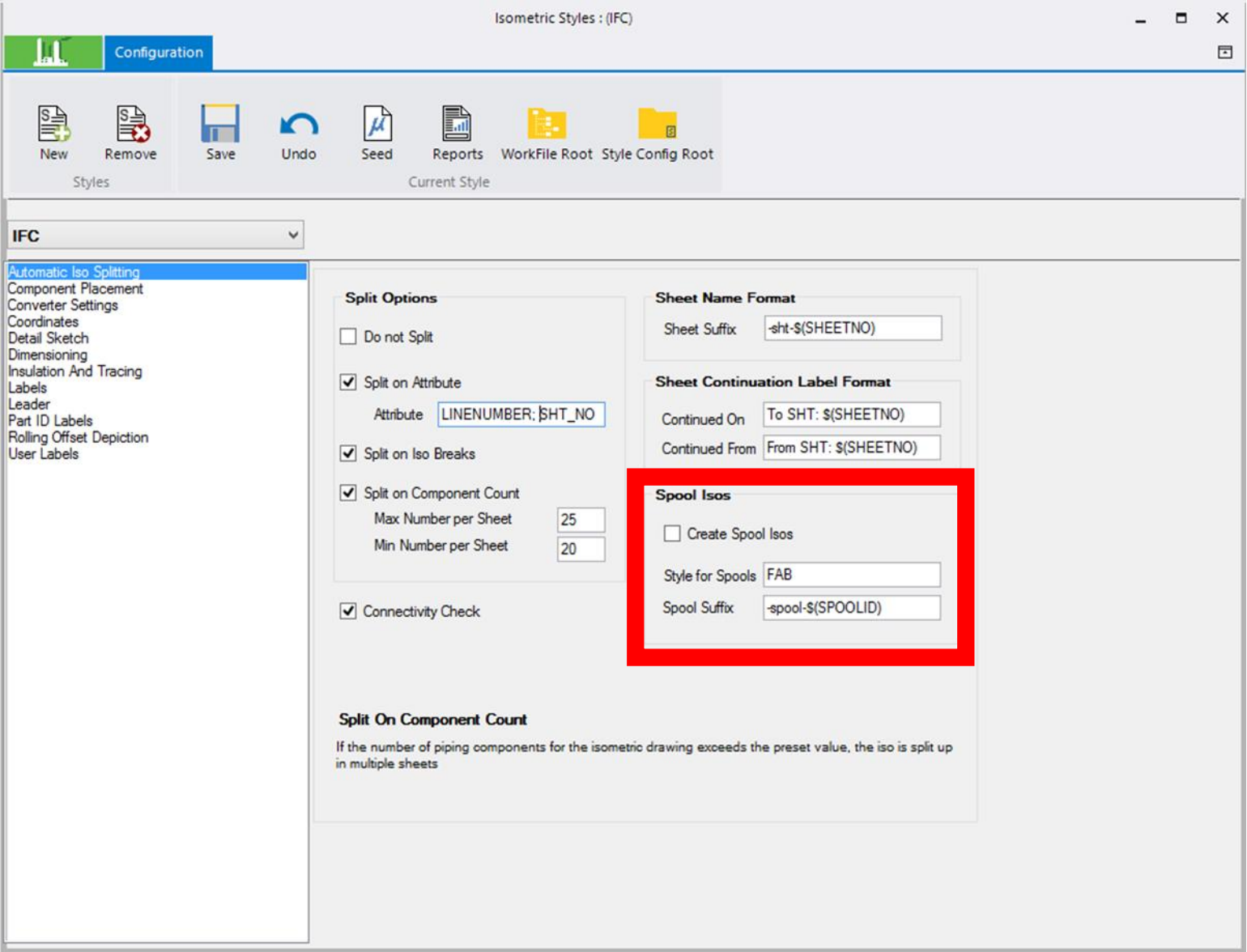
# 配置和出图可以独立启动

# 多属性分图





# Spool



Home

Open AP Tree IModel Tree View Log Options Project Styles MS Config

IModel Configuration

OPM MODEL

Iso Sheet

01-FL-FL100-mEX-OPM-iso-1

01-FL-FL100-mEX-OPM-iso-2

01-FL-FL100-mEX-OPM-iso-3

01-L-L100-mEX-OPM-iso-1

01-L-L101-mEX-OPM-iso-1

01-L-L101-mEX-OPM-iso-2

01-L-L101-mEX-OPM-iso-3

01-L-L101-mEX-OPM-iso-1

01-L-L101-mEX-OPM-iso-2

01-L-L101-mEX-OPM-iso-3

01-L-L103-mEX-OPM-iso-1

01-L-L106a-mEX-OPM-iso-1

01-L-L106-mEX-OPM-iso-1

01-L-L106-mEX-OPM-iso-2

01-L-L106-mEX-OPM-iso-1

01-L-L106-mEX-OPM-iso-2

01-L-L108-mEX-OPM-iso-1

01-L-L110-mEX-OPM-iso-1

01-L-L112-mEX-OPM-iso-1

01-L-L112-mEX-OPM-iso-2

01-L-L114-mEX-OPM-iso-1

01-L-L114-mEX-OPM-iso-2

01-L-L116-mEX-OPM-iso-1

01-L-L118-mEX-OPM-iso-1

01-L-L120-mEX-OPM-iso-1

01-L-L121-mEX-OPM-iso-1

01-L-L124-mEX-OPM-iso-1

01-L-L125-mEX-OPM-iso-1

01-L-L125-mEX-OPM-iso-2

01-L-L126-mEX-OPM-iso-1

01-L-L127-mEX-OPM-iso-1

01-L-L127-mEX-OPM-iso-2

01-L-L130-mEX-OPM-iso-1

Name	Line Number	Service	Revision	Run Date
01-FL-FL100-mEX-OPM-iso-1	01-FL-FL100-mEX-OPM	FL		
01-FL-FL100-mEX-OPM-iso-2	01-FL-FL100-mEX-OPM	FL		
01-FL-FL100-mEX-OPM-iso-3	01-FL-FL100-mEX-OPM	FL		
01-L-L100-mEX-OPM-iso-1	01-L-L100-mEX-OPM	L		
01-L-L101-mEX-OPM-iso-1	01-L-L101-mEX-OPM	L		
01-L-L101-mEX-OPM-iso-2	01-L-L101-mEX-OPM	L		
01-L-L101-mEX-OPM-iso-3	01-L-L101-mEX-OPM	L		
01-L-L103-mEX-OPM-iso-1	01-L-L103-mEX-OPM	L		
01-L-L106a-mEX-OPM-iso-1	01-L-L106a-mEX-OPM	L		
01-L-L106-mEX-OPM-iso-1	01-L-L106-mEX-OPM	L		
01-L-L106-mEX-OPM-iso-2	01-L-L106-mEX-OPM	L		

Selected Iso Sheet : 23 00:00:00.00

Name	Isometric Style	Progress Message	Isometric Revision
01-FL-FL100-mEX-OPM-iso-1	IFC	Isometric generated successfully	
01-FL-FL100-mEX-OPM-iso-2	IFC	Isometric generated successfully	
01-FL-FL100-mEX-OPM-iso-3	IFC	Isometric generated successfully	
01-L-L100-mEX-OPM-iso-1	IFC	Isometric generated successfully	
01-L-L101-mEX-OPM-iso-1	IFC	Isometric generated successfully	
01-L-L101-mEX-OPM-iso-2	IFC	Isometric generated successfully	
01-L-L101-mEX-OPM-iso-3	IFC	Ready for Processing	
01-L-L103-mEX-OPM-iso-1	IFC	Ready for Processing	
01-L-L106a-mEX-OPM-iso-1	IFC	Ready for Processing	
01-L-L106-mEX-OPM-iso-1	IFC	Ready for Processing	
01-L-L106-mEX-OPM-iso-2	IFC	Ready for Processing	
01-L-L108-mEX-OPM-iso-1	IFC	Ready for Processing	
01-L-L110-mEX-OPM-iso-1	IFC	Ready for Processing	
01-L-L112-mEX-OPM-iso-1	IFC	Ready for Processing	
01-L-L112-mEX-OPM-iso-2	IFC	Ready for Processing	
01-L-L114-mEX-OPM-iso-1	IFC	Ready for Processing	
01-L-L114-mEX-OPM-iso-2	IFC	Ready for Processing	
01-L-L116-mEX-OPM-iso-1	IFC	Ready for Processing	



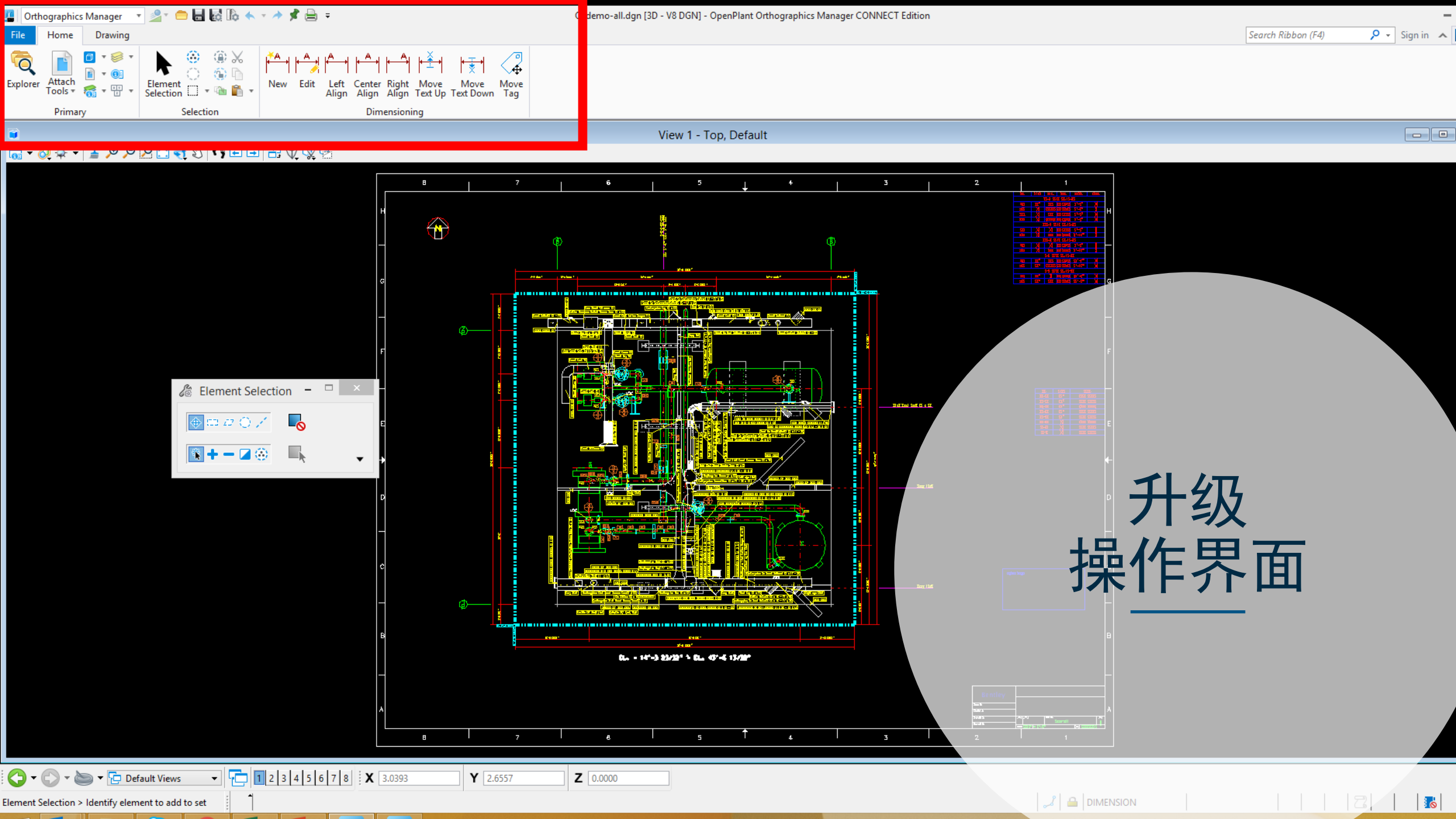




# OpenPlant CONNECT Edition

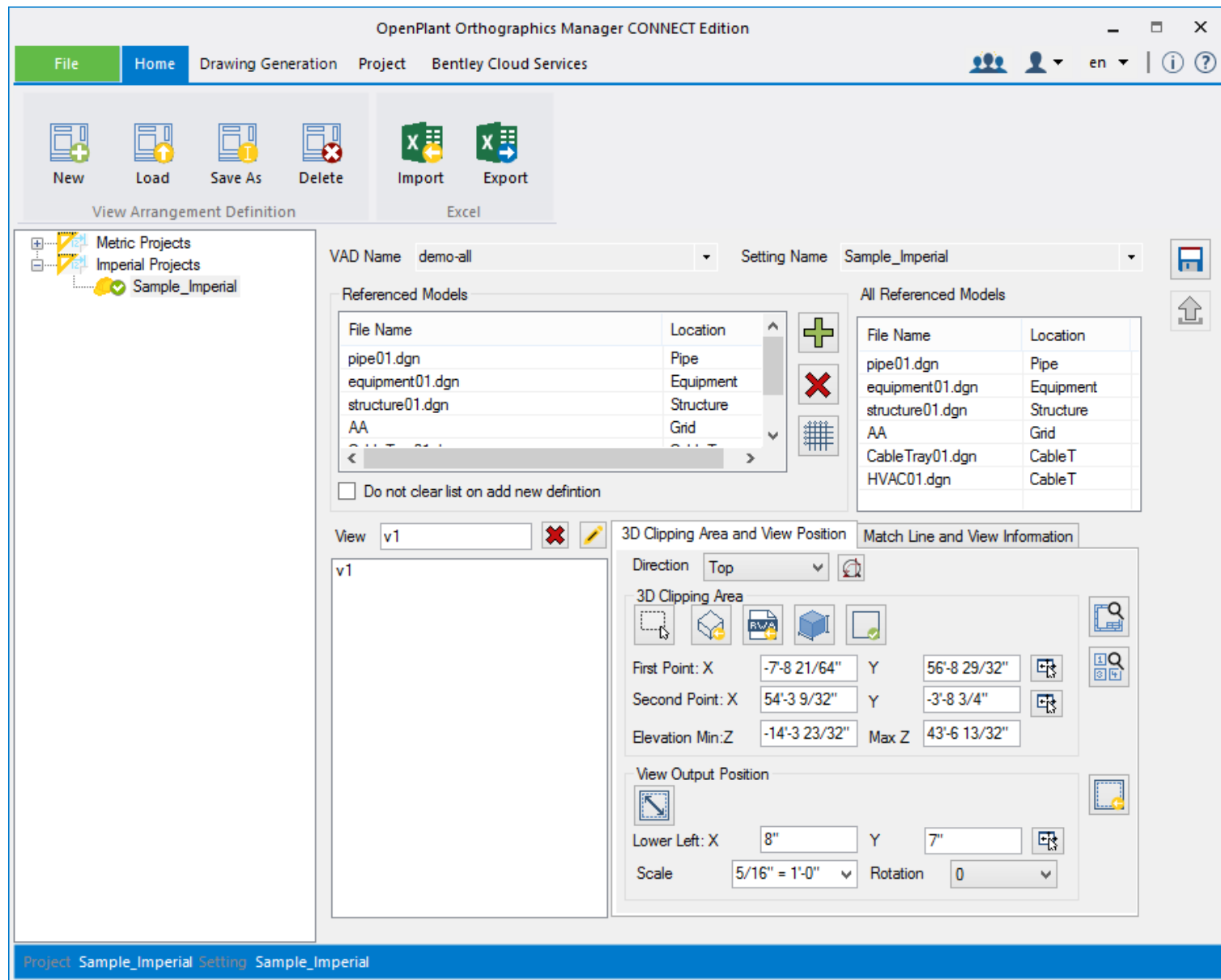
OpenPlant Orthographics Manager



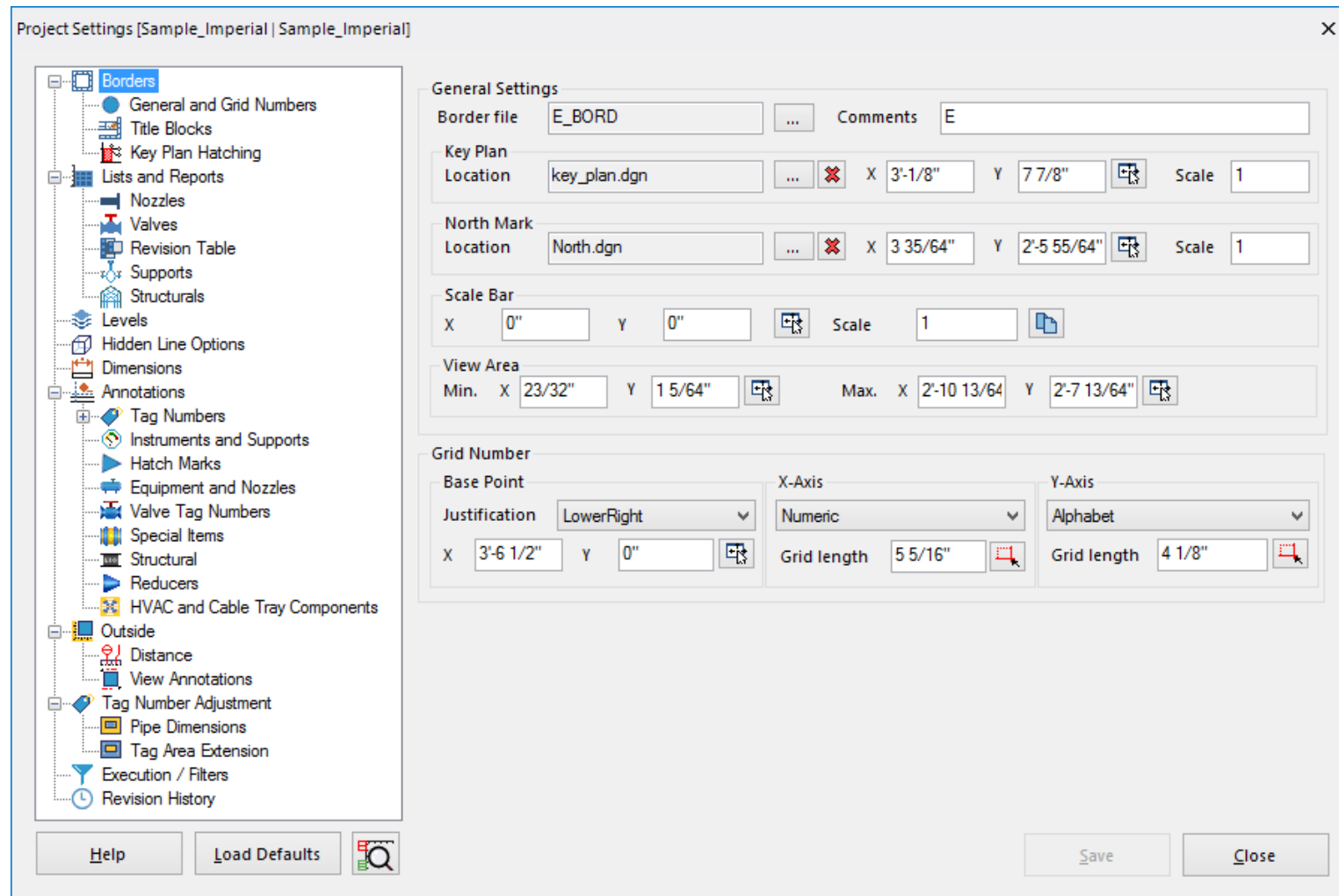


升级  
操作界面

# 全新 设置界面



# 全新 设置界面






# 每个项目每个视图可以有多种出图配置

Settings

Selected Setting Name

Setting Name	Comments	
Assembly		
E_Bord		
GeneralArrangement		
Sample_Imperial	Default	
test	Sample Imperial Project	





# 每个项目每个视图可以有多种出图配置

VAD Name  Setting Name

Referenced Models

File Name	Location
pipe01.dgn	Pipe
equipment01.dgn	Equipment
structure01.dgn	Structure
AA	Grid

☐ Do not clear list on add new definition

All Referenced Models

File Name	Location
pipe01.dgn	Pipe
equipment01.dgn	Equipment
structure01.dgn	Structure
AA	Grid
CableTray01.dgn	CableT
HVAC01.dgn	CableT

# 每个项目每个视图可以有多种出图配置

Input VAD (View Arrangement Definition) Files


☐ Select all

VAD Name	Views	Setting	Date	Hidden line Draw
<input checked="" type="checkbox"/> demo-all	1	Assembly	07/18/2018	H_demo-all.dgn
<input type="checkbox"/> demo-cabletray	1	Sample_Imperial	07/18/2018	
<input type="checkbox"/> demo-eqp	1	Sample_Imperial	07/18/2018	
<input type="checkbox"/> demo-hvac	1	Sample_Imperial	07/18/2018	
<input checked="" type="checkbox"/> demo-pipe	1	GeneralArrange...	07/18/2018	
<input type="checkbox"/> demo-str	1	Sample_Imperial	07/18/2018	
<input type="checkbox"/> test_VAD	1	Sample_Imperial	09/18/2018	

< >

☐ Clear intermediate files ☐ Do not add border


☒ Hidden line drawings ☒ Dimension / Annotation drawings

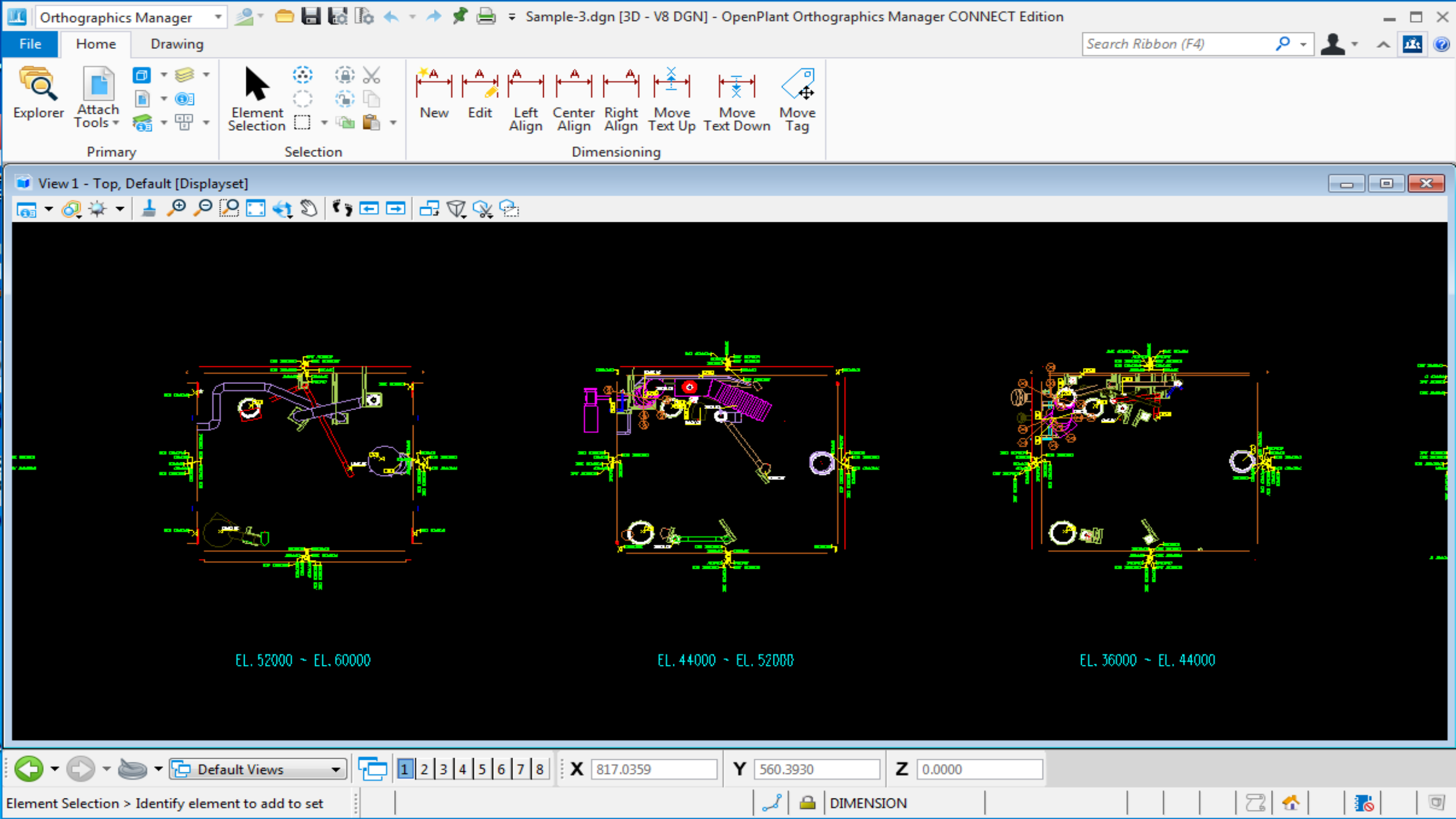
 Generate Drawings

Output (Hidden line and Annotation / Dimension) Files

☐ Select all

File Name	Size	Date	Output Type
<input type="checkbox"/> H_demo-all.dgn	296 KB	9/19/2018 3:55:58 PM	Hidden line only
<input type="checkbox"/> O_demo-all.dgn	322 KB	9/19/2018 3:56:03 PM	Dimensions and anno...

 Delete Output



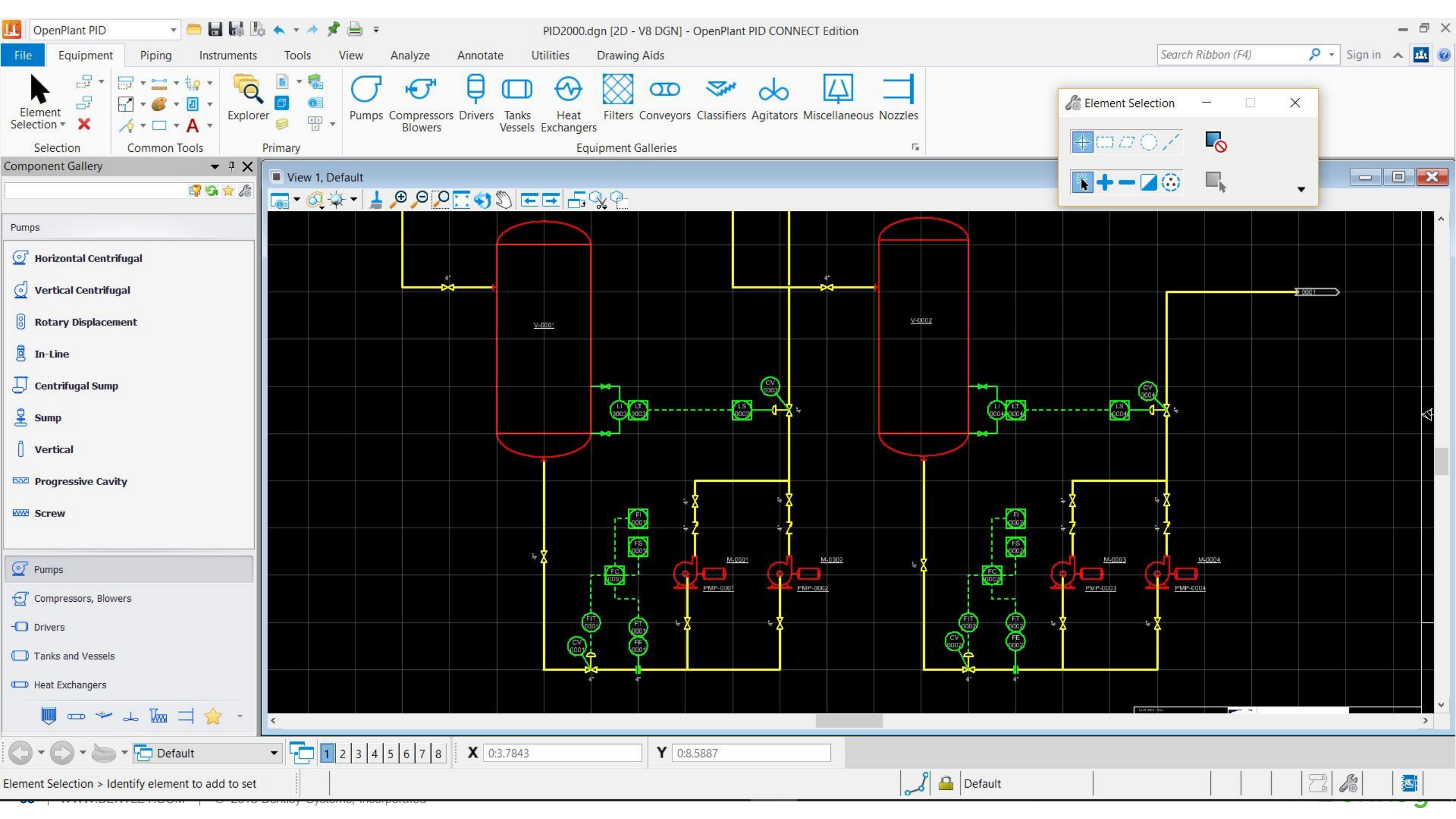


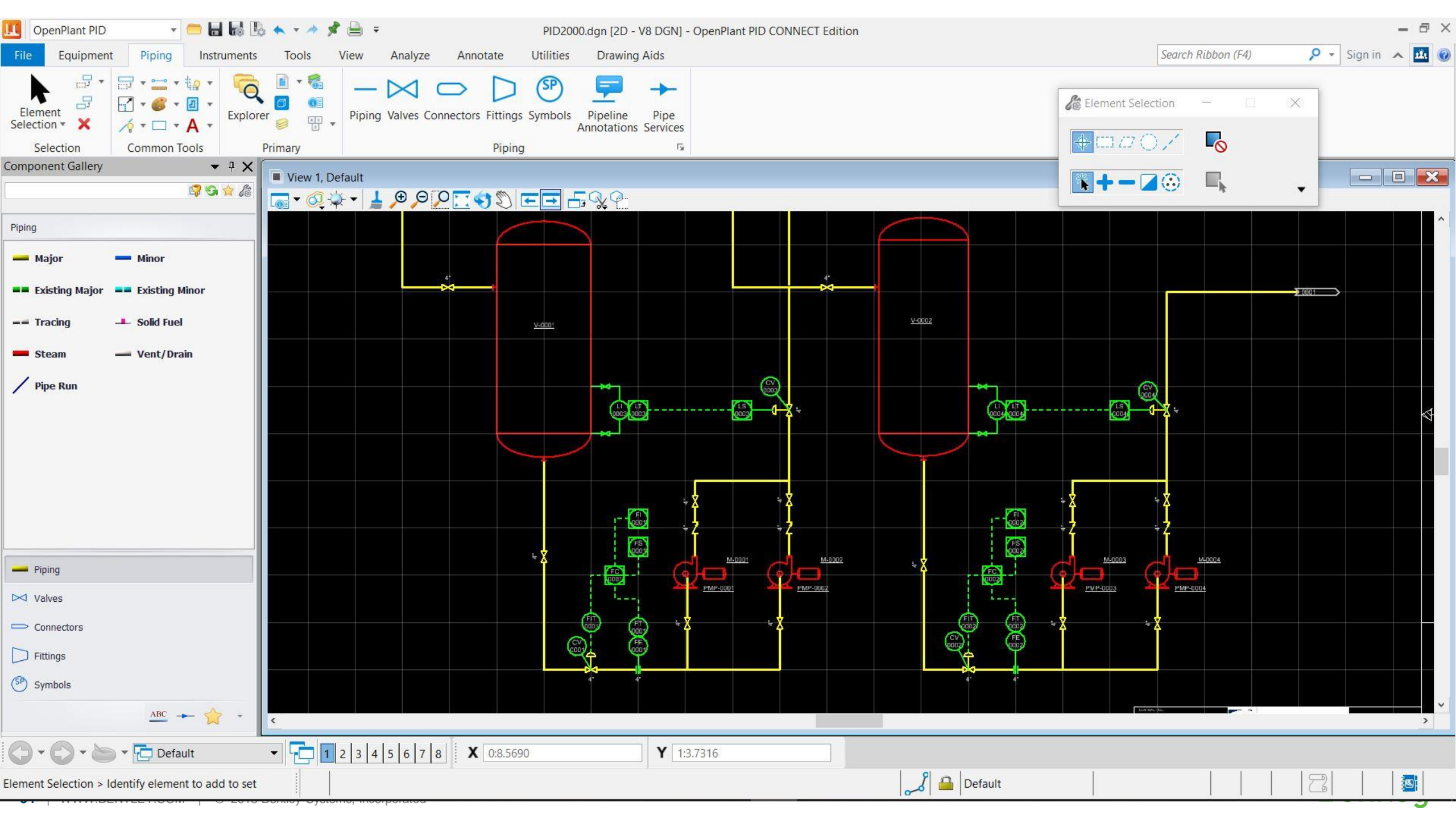


# OpenPlant CONNECT Edition

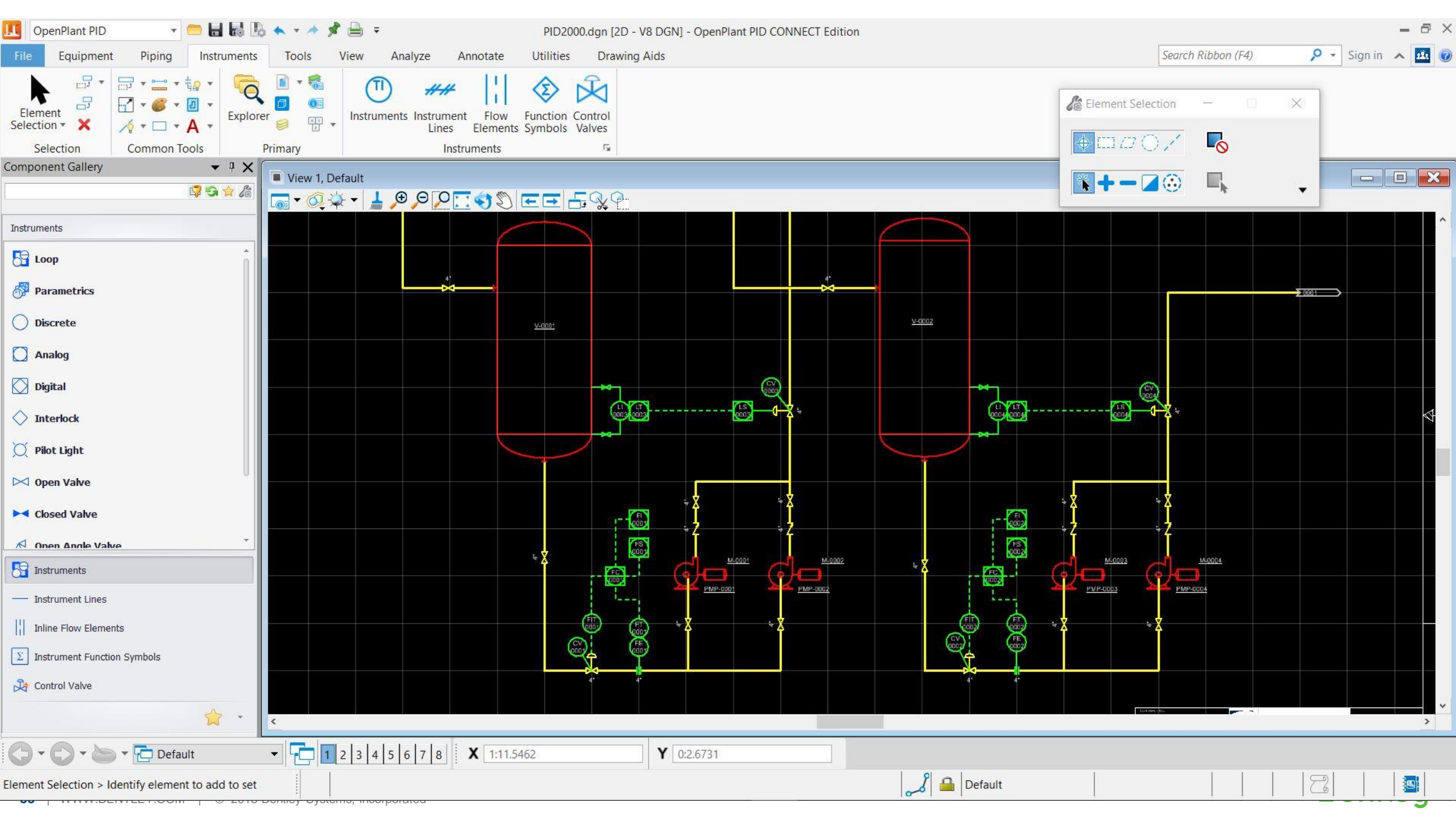
OpenPlant PID 更新

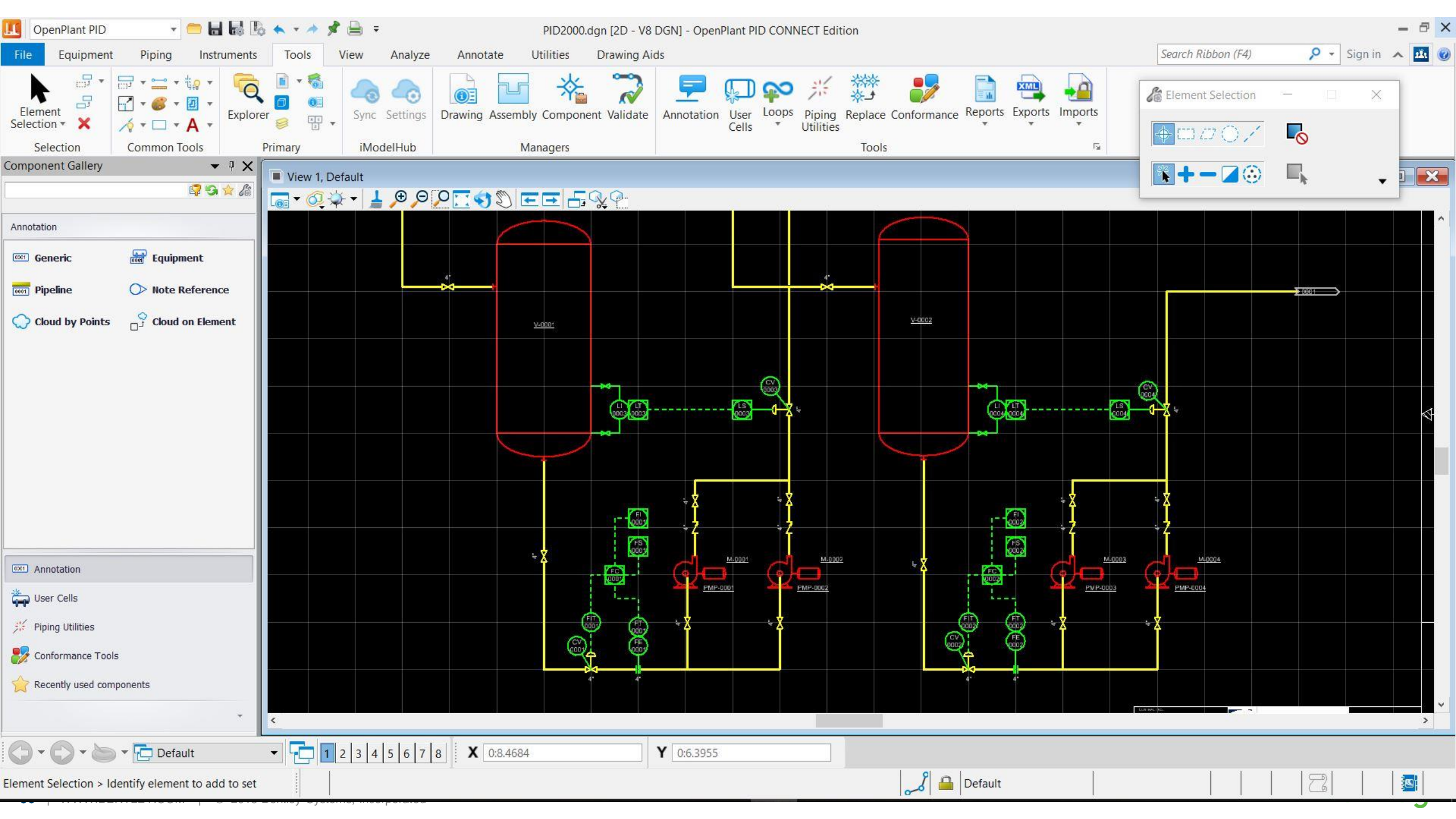


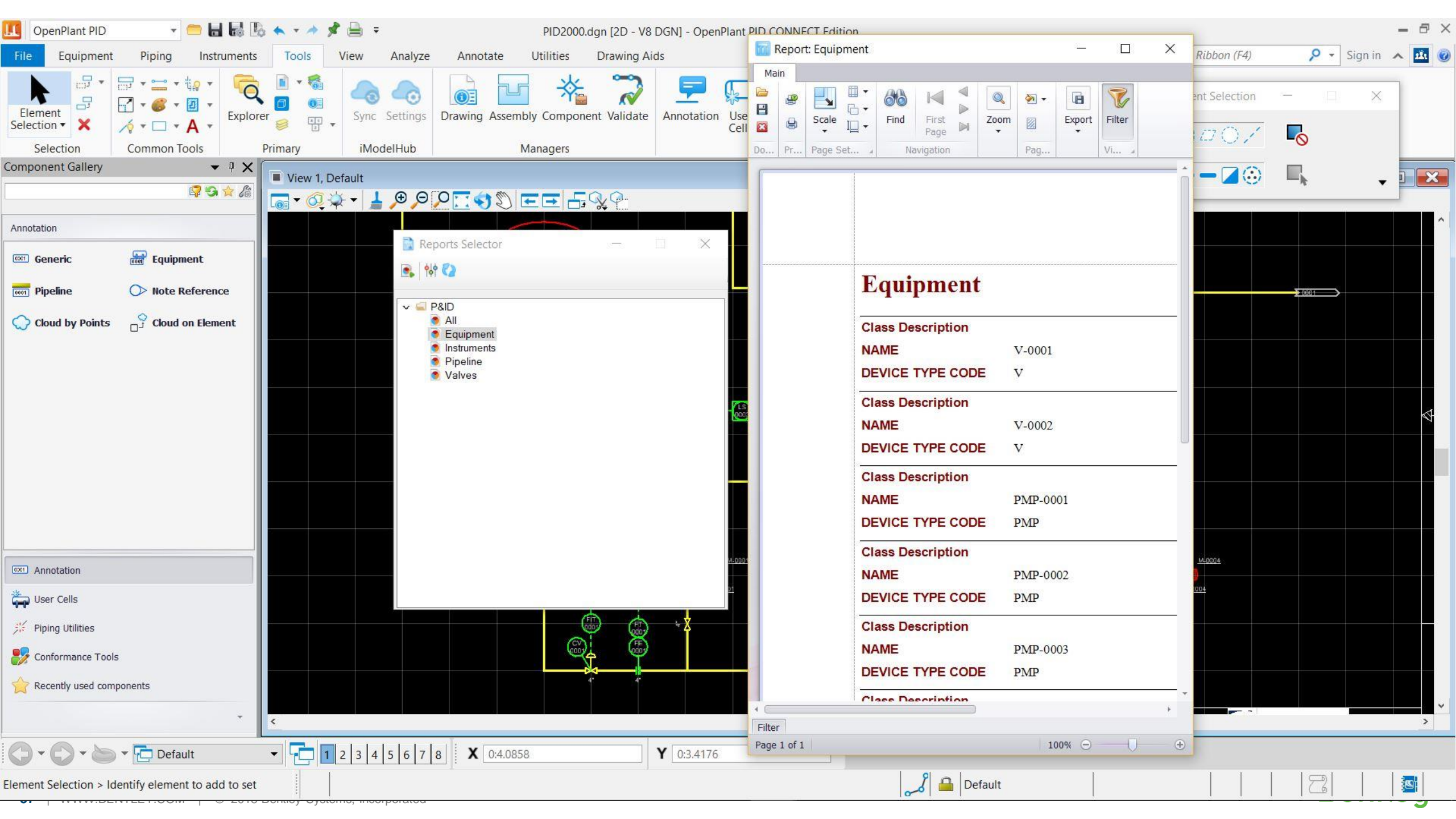






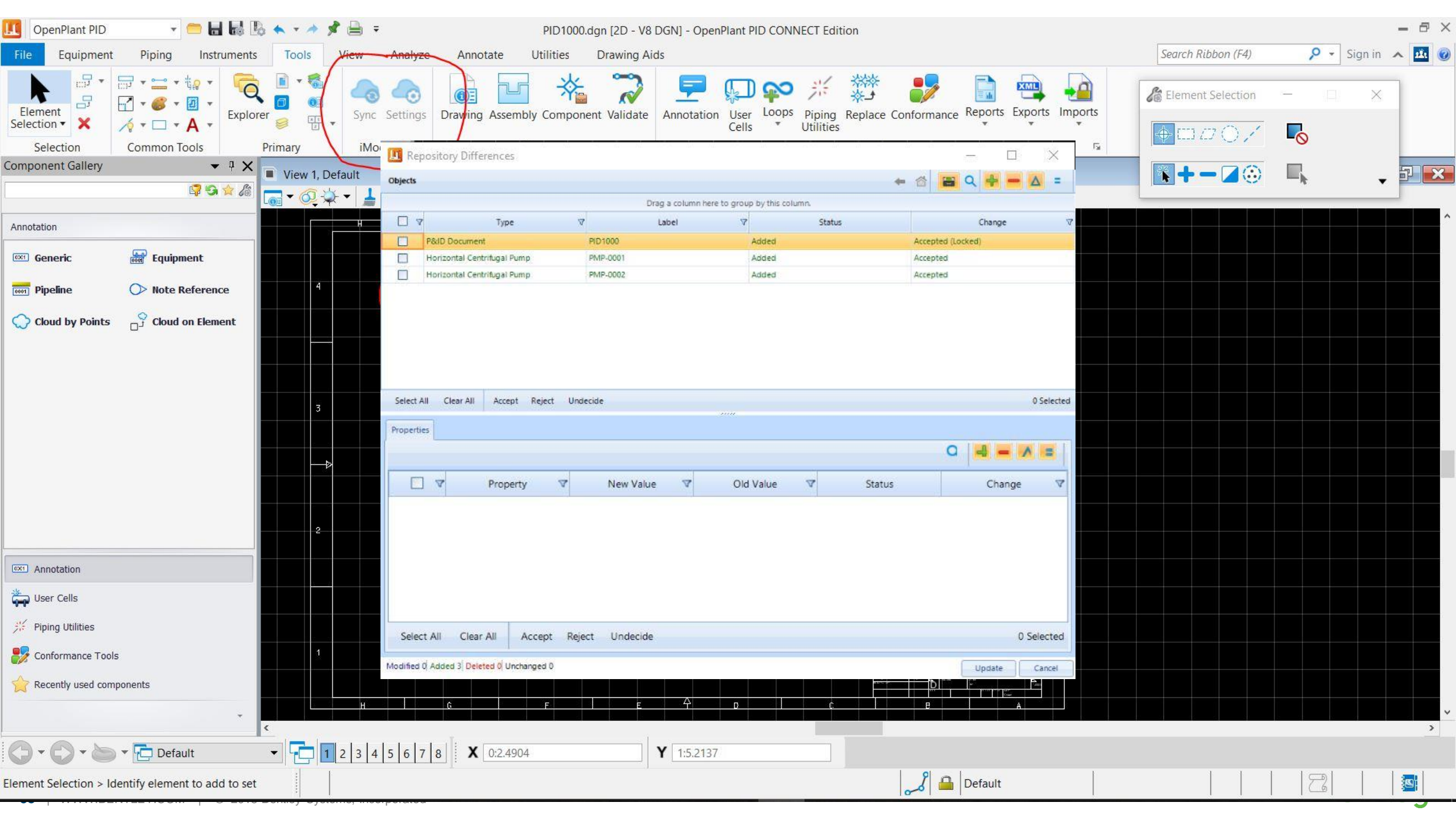






Equipment	
Class Description	
NAME	V-0001
DEVICE TYPE CODE	V
Class Description	
NAME	V-0002
DEVICE TYPE CODE	V
Class Description	
NAME	PMP-0001
DEVICE TYPE CODE	PMP
Class Description	
NAME	PMP-0002
DEVICE TYPE CODE	PMP
Class Description	
NAME	PMP-0003
DEVICE TYPE CODE	PMP
Class Description	



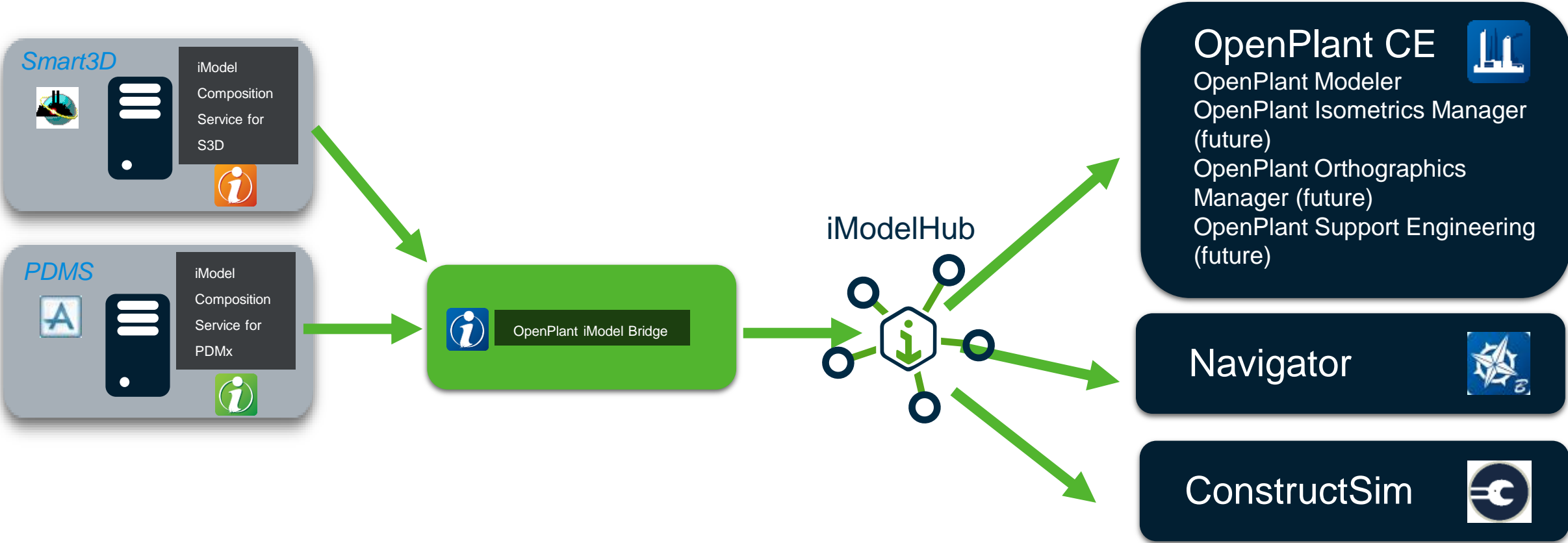






# 关于第三方数据

# PDMS / S3D 接口 – iModelHub





Thank You !