

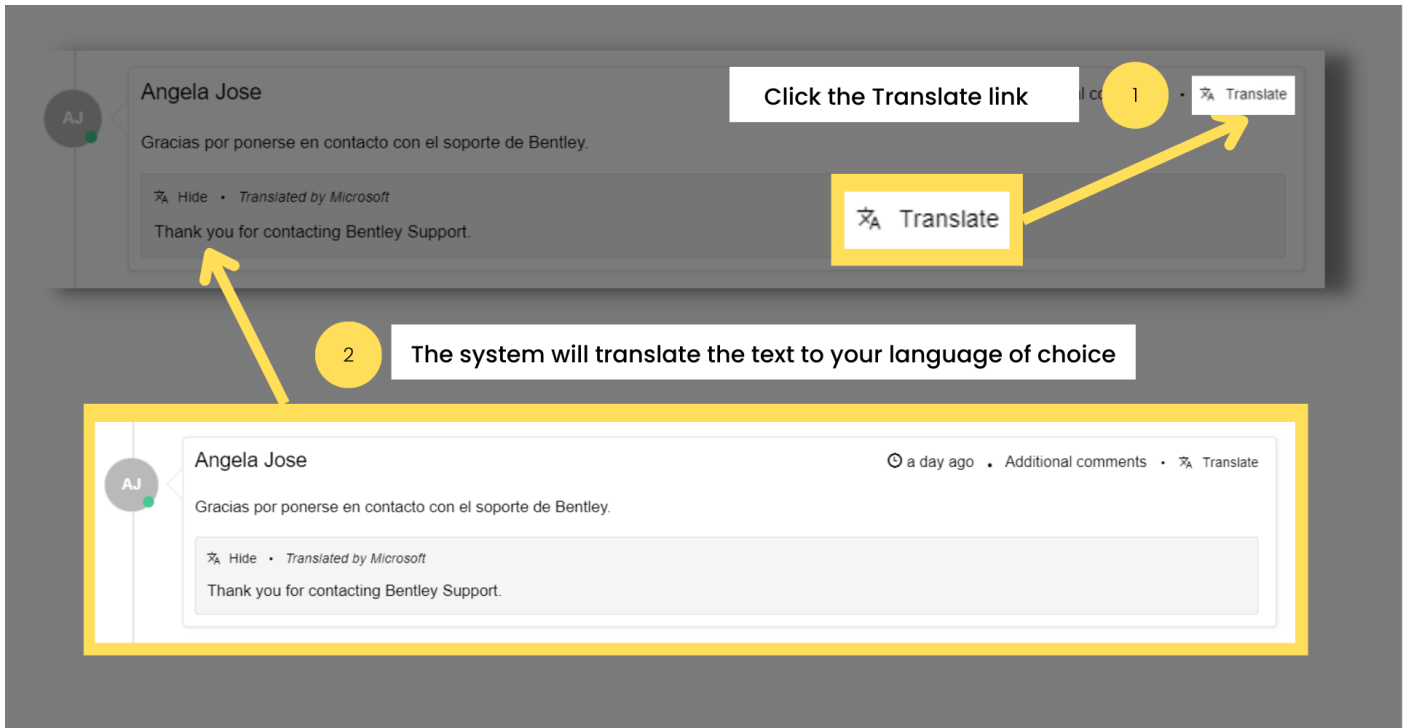
QUICK REFERENCE GUIDE

Dynamic Language Translation

MARCH 2023

USING THE DYNAMIC TRANSLATION

The Bentley Support Portal has a translation option right in the case! The translate button easily translates text into your preferred language. To translate the text on the activity section to your preferred language, click on the Translate link.



Please note: To translate the text, your preferred language must be set to a language other than English (continue reading for information on how to set your see next page on setting language preferences)

You can select from the following supported languages: English, Chinese, Czech, Dutch, French, German, Italian, Japanese, Korean, Polish, Portuguese and Spanish.

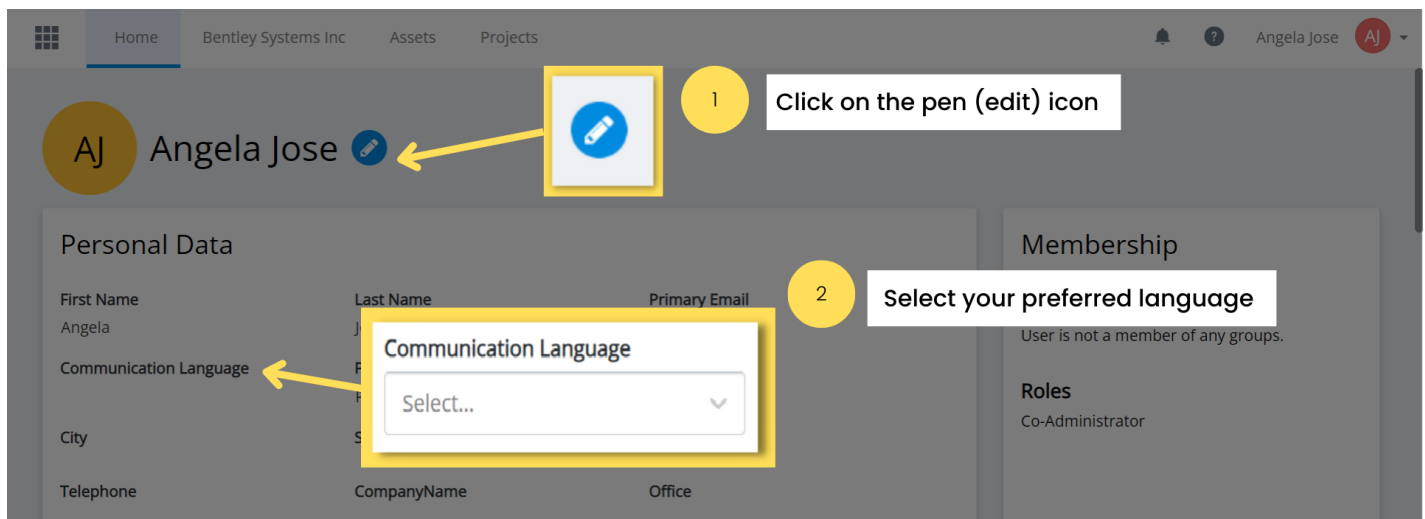
SETTING YOUR LANGUAGE PREFERENCE

There are multiple ways to set your preferred language and this can be classified into permanent and temporary settings.

PERMANENT LANGUAGE SETTINGS

If you would like to set your language preference permanently, follow the steps below:

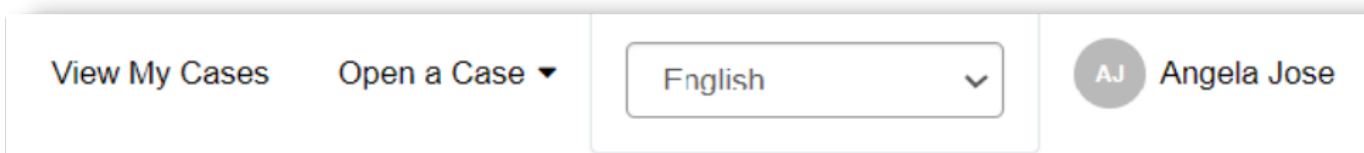
Go to Your Profile in User Management to set your language preference for the portal and forms.



Click on the pencil icon to edit your preferred Communication Language. Select your language of choice from the dropdown menu. Scroll towards the bottom and hit save.

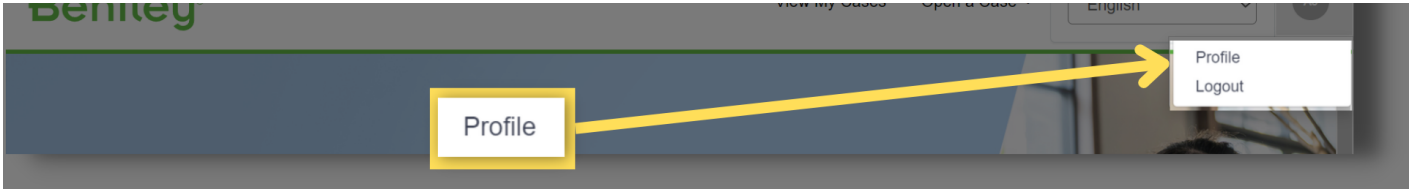
TEMPORARY LANGUAGE SETTINGS

You can also set your language preference within the Bentley Support Portal on a temporary basis by logging in to the portal and selecting your language of choice from the drop down menu found on the top right portion of the page.



SETTING YOUR LANGUAGE PREFERENCE

Alternately, you can also do this within your profile by clicking on your name followed by the Profile link



You will then be taken to your User Profile where you can apply the changes.

